

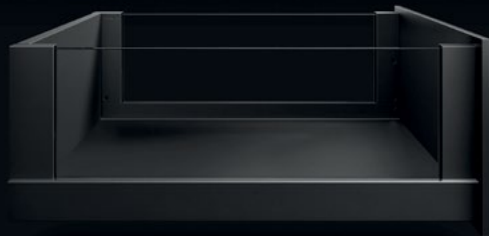
We bring furniture to life.



As a leading developer and manufacturer of functional movement systems, GRASS is certified in accordance with international quality and environmental management system DIN ISO 9001 and DIN ISO 14001.



GRASS has been a pioneer in the furniture industry for over 75 years. From the first concealed hinge to the invention of the double-wall drawer side, the history of GRASS has been shaped by visionary engineering expertise and countless groundbreaking products. In keeping with this tradition, we shall continue to develop movement systems that satisfy the highest expectations long into the future.



Feel more WOW.

G*GRASS®

With a branded product, you know what you're getting. That's where GRASS is the best example. **Our premium-quality movement systems combine technological advances, comfortable functionality, highest quality and precision through to the smallest detail.**

grass.eu

We offer excellent motion design and turn **opening and closing furniture into an experience.**



State-of-the-art customer and logistics centre

With a total investment of 70 million euros, the customer and logistics centre is not only the largest investment in the company's history, but also the most modern distribution centre in the Würth Group. The figures for the new logistics site speak for themselves: The 11-aisle high-bay warehouse is 22 levels tall, with over 600 racking uprights to accommodate almost 38,000 pallet storage spaces. The building covers an area of 11,150 m² and incorporates 5,000 tonnes of steel, with the longest facade measuring 180 metres.

Contents

- 02 About GRASS**
- 04 International**
- 06 Quality**
- 08 Sustainability**
- 10 Drawer systems**
- 20 Slide systems**
- 34 Hinge systems**
- 40 Organising systems**
- 44 Comfort systems**

Since 2004, GRASS has been part of the international Würth Group, which has an annual turnover of more than 20 billion euros and is the world leader in the trade of assembly and fastening materials.

EIN UNTERNEHMEN DER
WÜRTH  GROUP

We operate all over the world, wherever our customers call home. Because customer proximity is an expression of our corporate culture.

We move the world.

The GRASS Group is a globally successful corporate group, a traditional yet fresh brand with an impressive variety of perspectives. With around 1,650 employees across 18 locations and more than 200 sales partners in 60 countries, GRASS ranks among the world's leading specialists in movement systems.



Sales and production sites in Germany

- _ Reinheim production plant
- _ Reinheim sales office
- _ Verl sales office

Locations in Austria:

- _ Hohenems logistics centre
- _ Hohenems sales office
- _ Höchst production plant
- _ Götzis production plant
- _ Salzburg production plant

- GRASS locations
- Sales offices

GRASS is aware of its responsibility to provide customers with the outstanding product quality they expect.

We produce tens of thousands of movement systems in our plants every day. To ensure that these systems meet our high quality management requirements, each product line is thoroughly tested on site. Our high internal standards, test procedures based on DIN and LGA and testing by independent institutes ensure systematic quality assurance.



QUALITÄTS-ZERTIFIKAT
LGA

For us, development and production are seamlessly integrated. It is this belief that helps us transform ideas into new products.



Exceptional products call for state-of-the-art production and testing facilities.

State-of-the-art machinery helps our highly qualified employees to create outstanding products. This includes state-of-the-art production lines, cutting-edge welding robots and automatic punching machines which, with a pressing force of several tonnes, can form the thickest sheet metal and feed the parts directly into the automatic assembly line without any further post-processing. Numerous testing and control stations integrated into the production lines use SPC (Statistical Process Control) to monitor consistent quality excellence, which forms the basis for a high level of customer satisfaction.

For GRASS, environmental protection is a fundamental corporate objective. Taking personal responsibility is part of our identity.



> 20 %

proportion of recycled materials.

The proportion of recycled materials used in the production of our products is between 20 % and 40 %, depending on product and manufacturer.

30

E-charging stations to accommodate for increasing use of electric vehicles.

1,476 t

CO2 savings due to our high-tech surfaces.

New system technologies and optimised production processes in the supply chain enable CO2 savings of 1,476 tonnes per year overall.

2.8 million

fewer kWh per year required due to increased energy efficiency.

Measures to increase energy efficiency have led to savings of 2.8 million kWh per year. Translated into CO2, this represents a reduction of 636.5 tonnes per year.

11 million

fewer kW/h consumed.

Annual power consumption has been reduced by 11 million kW/h. This corresponds to the annual electricity consumption of 2,500 average family homes.

3,000 kW/h

reduction in heat requirements from the grid due to heat recovery.

Compressor and exhaust gas heat exchange systems with a total output of over 3,000 kW/h also improve our carbon footprint.

100 %

recycling of steel waste.

100 % of steel waste generated during production is recycled. As a result, an average of 6,000 tonnes of steel are returned to the production cycle.

1,140 solar panels

to produce green energy.

1,140 solar panels generate around 400,000 kW/h of electricity annually, saving around 200 tonnes of CO2 emissions.

50 %

waste reduction.

The volume of non-recyclable waste was also reduced by 50 percent per year.

GRASS drawer systems are almost 100 % recyclable and do not contain any hazardous substances or substances specified in the REACH regulation*.



* Substances of very high concern on the candidate list for approval in the EU.

**Functional
movement
means
so much more
than just open
and close.
Discover.**



Together with our customers and partners, we design the furniture of the future. This is a great task. We supply the world's most renowned furniture manufacturers - whether they're Italian star designers, fully automated volume manufacturers or innovative furniture producers.

Thinner, better, more stable. "Reduce to the max" is the design principle and requirement for all aspects of the Vionaro V8.

Vionaro V8.



The idea of making everything ever more compact, smaller and thinner, and consuming fewer and fewer resources is not new. This has been practised as long as we can remember. It is always a question of pushing the boundaries of what is feasible. And the Vionaro V8 Slim Drawer System is based on the same reasoning: How can we produce a highly effective and sustainable system using less space and less material? Boundaries may shift again at some point, but for the next decade at least, Vionaro V8 will come to define things.

Sustainable is the new normal.



Minimalism in its most beautiful form. Hardly any other movement system combines balanced, emotive aspects as harmoniously as the Vionaro V8 Slim Drawer System.

100 % recyclable.	One-piece solid metal drawer side.	The thinnest steel drawer side ever.	16 % more storage space.
Maximum stability and durability.	German Design Award Winner.	Sustainable efficiency.	High-tech, made in Austria.

Almost too slim to be true.

Until recently, the very idea of reducing a drawer side to 8 mm and, moreover, making industrial production commercially viable would have been technically unthinkable. With the Vionaro V8, we are turning this vision into a reality.



The cubist drawer system with a minimalist look combines the Dynapro slide system with an elegant look.

Vionaro V13.



The elegant steel drawer sides function as design highlights, meaning decorative accessories can be completely dispensed with. With heights of 63 mm, 89 mm, 121 mm, 185 mm and 249 mm, furniture design can be reinvented day after day.



Torsion-free frames with an integrated front stabiliser for drawer side heights from 185 mm ensure a perfect hold and enable high fronts up to 780 mm - without having to use a railing.



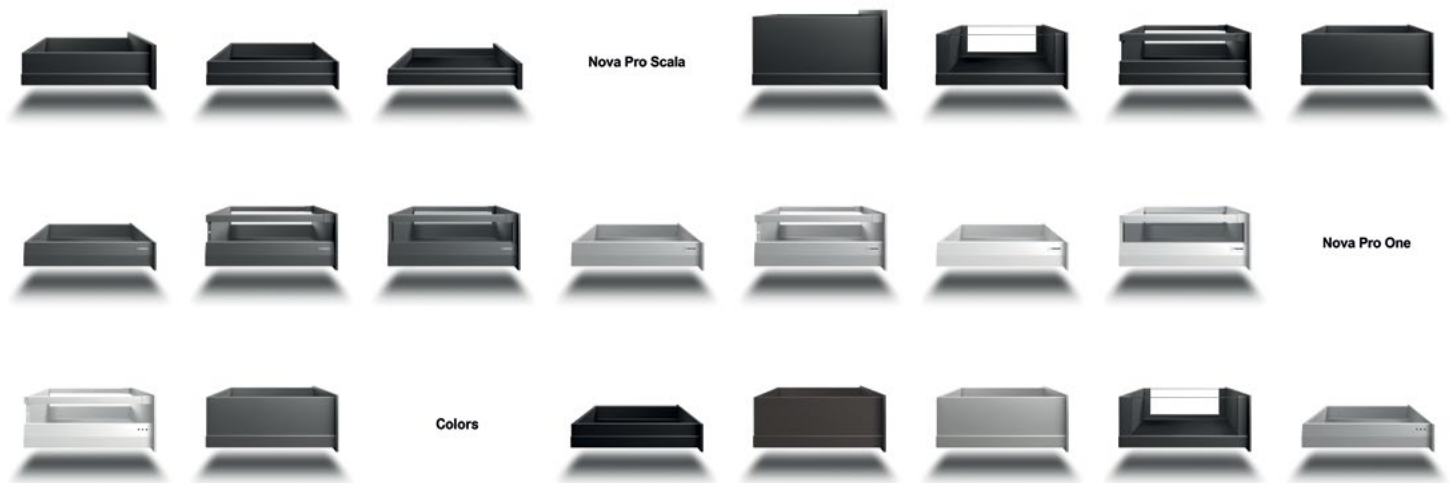
We make no compromises when it comes to **robustness, quality and reliability**. You can rely on this with GRASS drawers.

We know that our movement systems are subjected to high loads, sometimes over 20 years.



Nova Pro - the drawer.

Nova Pro Platform.



Whether you use the diversity of Nova Pro Scala, the compact portfolio of Nova Pro One or combine both, the Nova Pro platform offers maximum differentiation.

The difference between modular systems and a true platform concept is that all variants from a platform are compatible. That's what makes the Nova Pro platform unique, because you can combine everything with everything - from the slides to the accessories.

Adjustment and installation are always the same.	Two decors and two assortments for different product lines.	Same bottom panel and back panel dimensions.	Everything is compatible with everything.
Motion technology that has been proven millions of times over.	Fewer parts. Less complexity. More efficiency.	Same furniture fronts for Nova Pro Scala and Nova Pro One.	High-tech, made in Austria.

There are countless good reasons to choose Nova Pro.

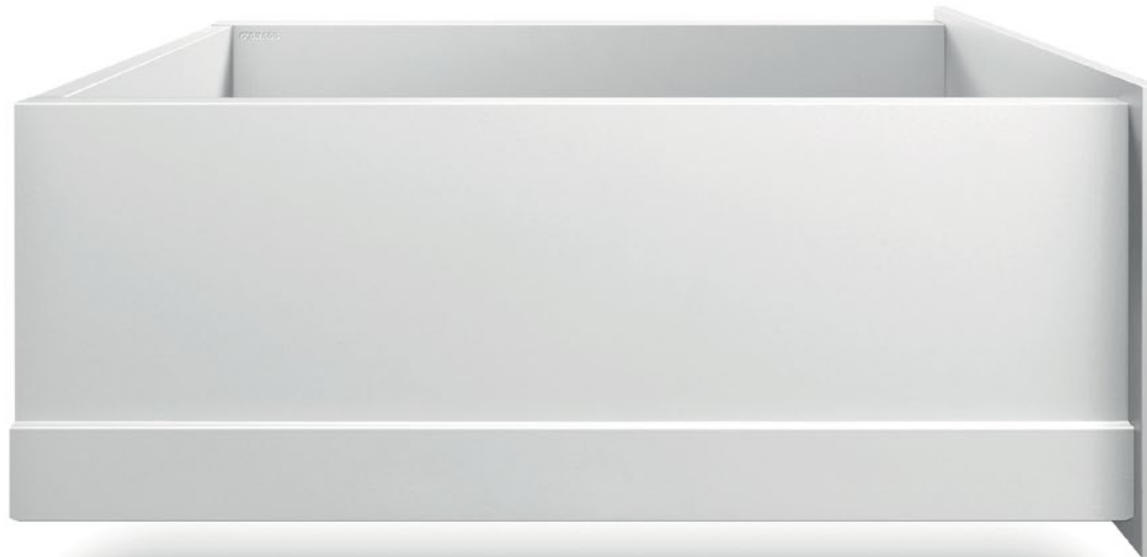
Over the years, Nova Pro has become synonymous with double-wall drawers.

The quality, stability and smooth running of the movement system have been proven millions of times over and are still unmatched today. This means, the name Nova Pro alone creates a certain expectation that must be met by every single product.



The embodiment of exceptionally easy opening, excellent running characteristics, minimum drawer deflection and outstanding reliability.

Nova Pro Scala.



Inspiration at right angles.

The minimalist design with its striking lines, right angles and small radii gives the double-wall metal drawer sides a timeless, functional elegance.



Movement technology that's been proven millions of times. Nova Pro is one of the most successful double-walled full-extension slides in the world.

**Nova Pro One is the best of
Nova Pro - concentrated.**

Nova Pro One.

The complexity minimiser.

When it came to describing the Nova Pro One, we had to be inventive: This is because the new drawer system is able to meet all the requirements of modern furniture construction in just three variants. This makes Nova Pro One the ideal entry into the Nova Pro universe.



The new number one when it comes to a compact range, performance proven millions of times over and maximum differentiation.

It's all about
what's under
your drawer.

Slide systems.

**Silent. Weightless.
Invisible.**

The quality, reliability, stability and smoothness of the concealed slide, tried and tested millions of times over, are state of the art to this day.



Wood or steel.
It doesn't matter.



Dynapro.



DP

High load capacity. Synchronised movement. 4D adjustment.
The variety of special qualities makes Dynapro a
unique movement system for individualists.

Let Dynapro provide the inspiration for new ideas.

Innovating means adopting new approaches. That applies just as much to the creation of new furniture designs as it does to the development of new movement systems. The more unique the design, the more vital it becomes to have intelligent function characteristics. To cater for even the most exceptional requirements, GRASS has developed a completely new slide system that combines concealed functionality and outstanding running characteristics. For furniture designers, this opens up entirely new perspectives.

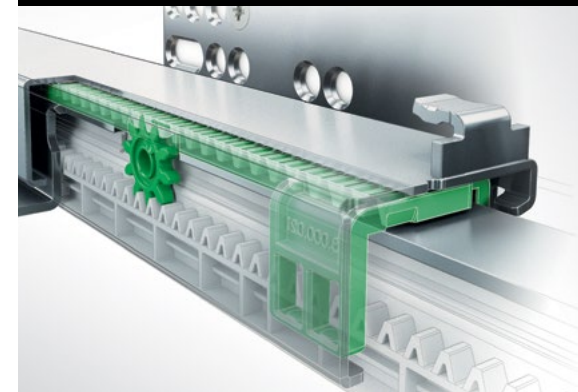
Excellent running characteristics.

Unlike conventional concealed slide systems, Dynapro features a synchronisation mechanism. Load capacities of up to 70 kg are no problem for the system. Abrasion-resistant plastic rollers ensure a smooth, even glide every time.



Four dimensions for perfect front panel alignment.

Dynapro offers integrated height, side, tilt angle and depth adjustment. All adjustments can be made without tools, and are easy to access and handle. In short: You can achieve optimal front panel alignment with just a few tweaks.



The innovative
slide system for
30 kg load capacity.

Dynaneo.

With a load capacity of 30 kg, Dynaneo is perfect for living areas and price-sensitive markets. High-quality plastic rollers and a newly developed centre rail ensure smooth running and maximum stability. Combined with proven Soft-close damper technology and low pull-out forces, Dynaneo offers the best possible performance.



Dynaneo is the perfect addition to the Dynapro concealed slide system and, due to its innovative guiding concept, offers maximum stability. Dynaneo is an excellent option for furniture manufacturers as an entry into the world of uncompromising Dynapro quality. They can switch to Dynapro at any time, or combine both systems without having to change their production processes.

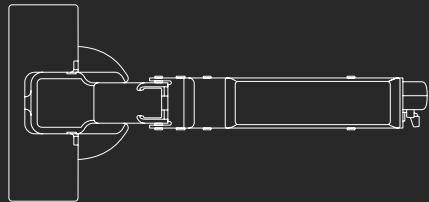


No matter whether they are full or single extension slides: The multitude of special features makes Dynaneo an efficient movement system for anyone who does not want to compromise, even with a load capacity of 30 kg.

Maximum stability, integrated damper, pure design.

Tiomos.

Every detail and function has been completely redesigned and redeveloped from the bottom up. The result is an elegant hinge system that easily meets all technical and functional requirements and creates a sensation with its special product details.



3D adjustment.	Easy opening despite 30 % more damping force.	LGA certification.	Minimal gap and joint measurements.
Door overlay up to 24 mm.	Three-stage damper adjustment.	Perfection is not visible, but palpable.	

Overall aspiration.

Whether it's for glass, mirror or thin doors, aluminium frame doors, corner cabinet hinges or hinges for mitred applications, Tiomos offers the perfect movement for almost any application.

Soft-close inside.

The entire damper system is concealed within the hinge arm.



reddot design award
honourable mention 2010



Three levels for individual comfort.

For stronger damping action, turn the adjustment lever 90° to the right.



Tiomos hinges leave the factory with the adjustment lever in the horizontal position.



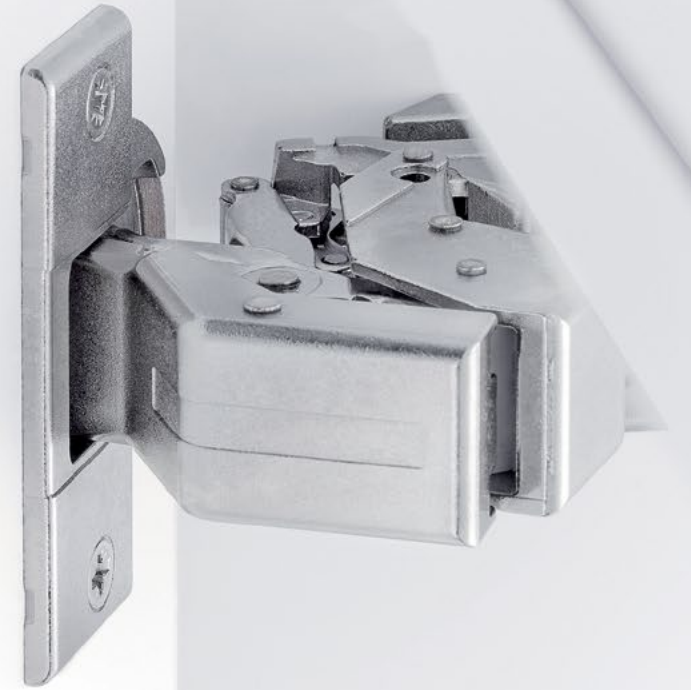
For gentler closing action, simply turn the adjustment lever of the Soft-close damper to the left by 90°.

Physically optimised lever movements make furniture doors extremely easy to open. In addition, the unique kinematics enable unprecedented front panel alignments with minimal gap widths. These special features of the new hinge system are particularly beneficial for furniture designers, as the reduced gaps and reveals open up completely new possibilities in furniture design.



Complete damping comfort for
glass and mirror doors.

Tiomos M series.



In addition to the clever fastening technology that ensures firm and stable support, Tiomos Mirro is an extremely elegant solution for mirror and glass doors that combines all the advantages of the proven Tiomos hinge generation.

Which organising system is best for you?

Minimum
complexity.
Maximum
versatility.





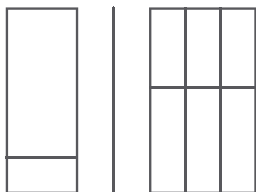
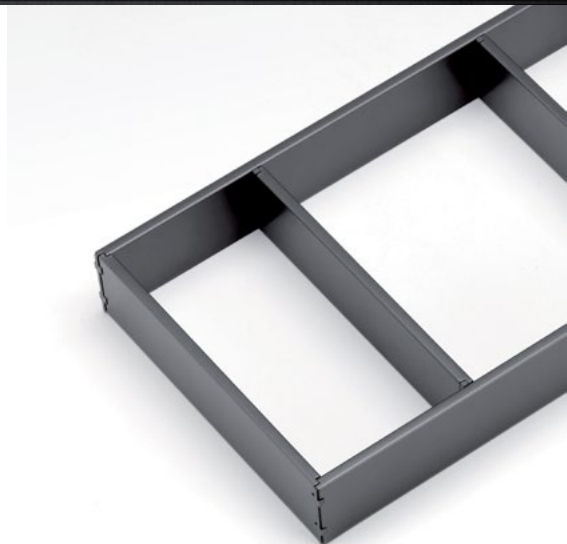
Dividing and organising systems.

Our dividing and organising systems are designed to ensure the neat and tidy arrangement of drawer contents for everyday use in the kitchen.

With Tavineia Sorto, GRASS has created an integrated interior accessory system for drawers that boasts a purist design and straightforward systems that could not be simpler. It is perfectly complemented by the Tavineia Optima dividing system for pot drawers, as well as a variety of other organising systems.

Tavineia Sorto.

Knife blocks, foil roll holders and spice racks - the matching accessories are what make Tavineia Sorto a perfectly matched range of interior accessories.



Two frame elements, one length divider. That's it. Everything you need to get organised. Tavineia Sorto can be arranged inside drawers however you like. Sounds simple. And it is.

Tavineia Optima.

The slim Tavineia Optima divider profiles allow flexible positioning anywhere in the drawer due to the spring-loaded profile clips. Plus, the optional smartboards, which can be easily attached to the divider profiles using a clip, provide stable support for items such as pans.



Simple.
Attractive.
Tidy.



Maximum
operating comfort
when opening
and closing.

Comfort systems.

High-quality opening systems combine handle-free opening with proven Soft-close damper technology to meet all the requirements of modern, handle-free furniture.

Modern furniture boasts impressive architecture with large surfaces, clean lines and a refreshing purism in the design language. Consequently, furniture design is increasingly focused on drawer and pull-out systems devoid of handles or grip recesses. Due to the touch-activated mechanism, large, handle-free fronts can be built that open with a light tap.

Sensomatic

Electromechanical opening system to ensure maximum operating comfort.

The premium solution from GRASS. Three adjustable weight classes, easily retrofittable, plug and play and soft-close damper meet all customer requirements.

Tipmatic Soft-close

Mechanical opening system for demanding specifications.

This opening system combines the benefits of handle-free opening with the elegance of Soft-close technology - all without electronic components.

Tipmatic

Handleless opening for doors and drawers.

Tipmatic focuses on the essentials and provides an economical solution for handle-free modern furniture.

Soft-close

The comprehensive damping concept.

Brakes the front softly and gently pulls it in. It can even be used with narrow handle strips due to the extremely low pull-out forces.

To improve every day, to stay curious, to think one step ahead and to always strive for the best solution - these are our aspirations.



Excellence in **Motion Design.**

