

Eva-tech



BAMBOO COMPOSITE BALUSTERS

www.eva-last.co.za
V09/24



LOW ENVIRONMENTAL IMPACT
Sustainable manufacturing & use of raw material

BAMBOO COMPOSITE BALUSTERS

Eva-tech bamboo composite balusters add beauty and function to your outdoor space and can be used as screening, pergola latices, or other creative exterior accents. Solid balusters are top fixed and offer a wide range of suitable applications, for a touch of style, shade, or privacy.

COMPOSITE BALUSTERS ADD BEAUTY & LIVEABILITY

Eva-tech composite balusters are small square or rectangular profiles perfect for creating decorative architectural designs and privacy screens. These versatile profiles can be used in many ways and come in a range of natural colours which allows architects or homeowners to let their imaginations run wild.

BAMBOO COMPOSITE BALUSTERS

Eva-tech balusters are made from bamboo PE composite materials, designed for long-lasting weather resistance, including protection against insects, moisture, and fading.



TAKE HOME THE BENEFITS



NATURAL LOOK



LOW-MAINTENANCE



FADE RESISTANT



SCRATCH RESISTANT



WEATHER & DECAY
RESISTANT



ENVIRONMENTALLY
FRIENDLY

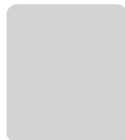


40 x 30 mm
Rectangular profile

SOLID COMPOSITE BALUSTER

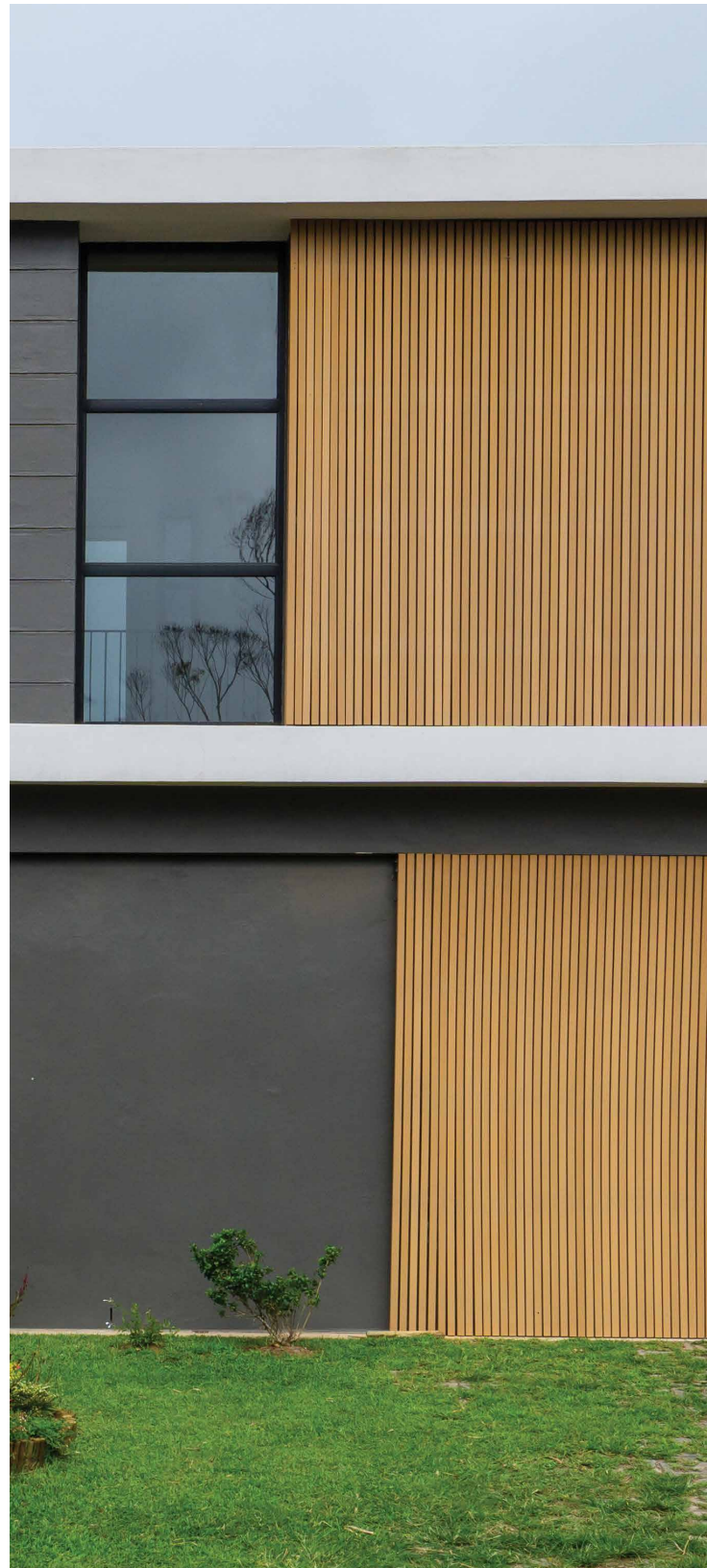
The Eva-tech solid baluster is made from low-maintenance, cost-effective Eva-tech bamboo composite, and is a solid profile that offers design creativity for vertical and horizontal applications in the Eva-tech range of natural colours. Install the balusters as privacy screening, pergolas, or other creative exterior applications.

Dimensions	40 x 30 mm (2.7m lengths)
Weight	1.6 kg/m
Recommended joist spacing	Application dependent



Top fixing for screening

Uses colour matching HULK composite top fixing screws



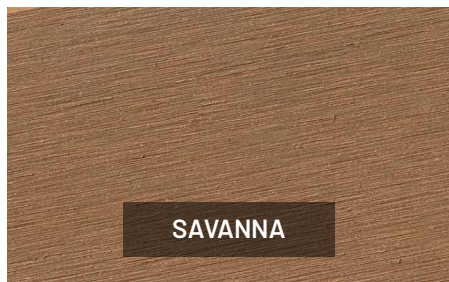
NOTE: Due to printing and/or screen variations, colours in the brochure may differ slightly from the actual products.



Featured: **Eva-tech balusters, Savanna**
Solid bamboo composite baluster

COLOUR RANGE: BRUSHED FINISH

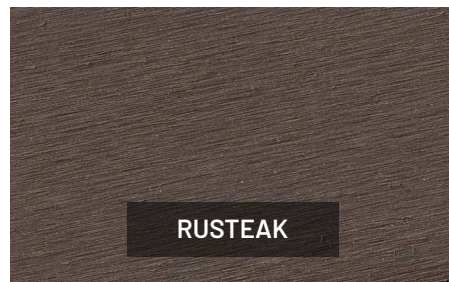
Eva-tech 



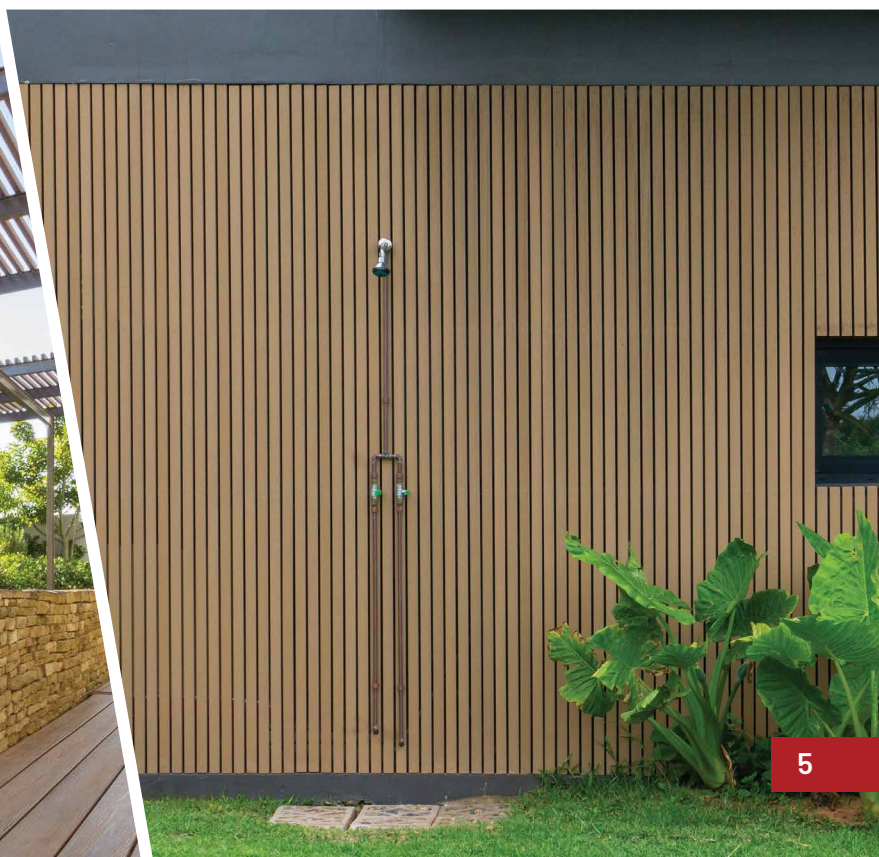
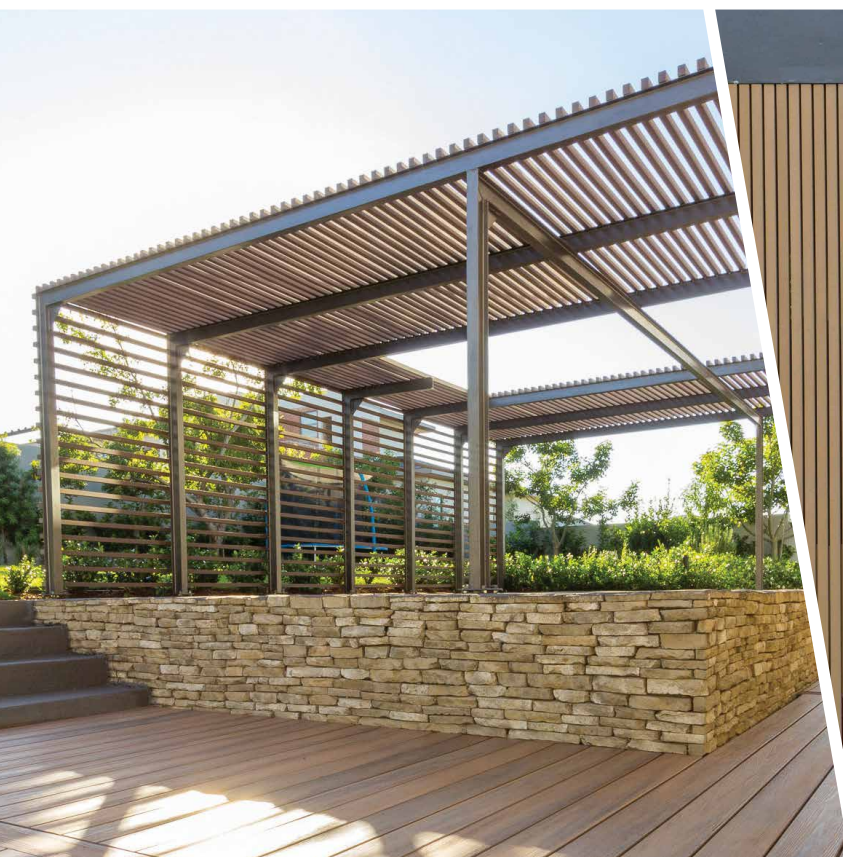
SAVANNA



XAVIA



RUSTEAK





LOW ENVIRONMENTAL IMPACT

Sustainable manufacturing & use of raw material



The mark of responsible forestry



CHOOSE SUSTAINABLE BUILDING MATERIALS



RENEWABLE RESOURCES & RENEWABLE ENERGY

We believe that how we manufacture is just as important as what we manufacture when it comes to going green. That's why we've traded in fossil fuels for renewable energy. Our products use solar power as part of our manufacturing process. We are fully committed to bringing you a product that's holistically sustainable.

Every Eva-Last outdoor range pairs recycled raw ingredients with bamboo for a stronger, more sustainable composite. Bamboo rejuvenates over 30 times faster than traditional hardwoods and it releases 35% more oxygen into our air. Eva-Last is internationally recognised for our commitment to the environment. We're proud of the work we do to promote environmental sustainability, and invite you to choose timber alternatives that are gentle on the Earth.

- Made from recycled materials
- No trees felled
- No treatment or toxic chemicals required for maintenance
- Solar power used in the manufacturing process
- Reduced impact on landfills
- Reduced carbon footprint

Head office

Johannesburg: 010 593 9220

Cape Town: 021 003 3126

Durban: 031 331 0068

Gqeberha: 041 450 2933

Email: sales@eva-last.co.za

EVA-LAST®
INSPIRED BY NATURE, DESIGNED FOR LIFE.



www.eva-last.co.za

© 2024 Eva-Last reserves the rights to all brands, products, and trademarks within this publication.

Eva-Last ITEM: 09/24 SA PRODUCT CATALOGUE