



FLOAT

UHP

LIGHTWEIGHT
CONCRETE
PANELS

CATALOGUE


Real concrete, just better.

Resilience is just the beginning.

What if concrete cladding could be lightweight, high-performing
and enhance both acoustics and energy efficiency?
What if it could transform the way we experience space?

United by innovation, our team merges cutting-edge science,
engineering precision and aesthetics to redefine what concrete
can achieve. **FLOAT Ultra High-Performance Concrete** push
architectural boundaries while elevating environments
for a more refined way of living.

The concrete evolution is here.



Genuine
concrete surfaces
casted from
nature's elements
in the form of a thin
high-performance panel.

KONKRETE
SERIES.



What superior innovation shapes our panel performance?



Fire Safety

FLOAT panels meet “non-combustible” fire protection standards, ensuring maximum safety with a naturally fire-resistant composition.



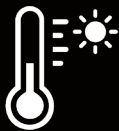
Waterproof Protection

Engineered for all-weather durability, this advanced material resists moisture absorption, preventing damage from humidity and the environment.



Acoustic Comfort

Optimized for noise reduction, this surface dampens sound waves, ensuring a peaceful and more focused atmosphere.



Thermal Efficiency

Advanced thermal insulation properties ensure reduced energy waste, maintaining optimal indoor conditions with less reliance on heating and cooling systems.



Lightweight & easy install

Designed for convenience, our panels speed up installation while maintaining superior performance and longevity.



Our focus is
on creating
relaxed
surroundings
as an antidote
to the fast pace
of modern life.





Panel Specifications

KONKRETE 4

1200 x 600mm

47 1/4" x 23 5/8"

Weight 9.8kg // 21.6 lbs

Thickness 13mm // 0.5"

Finish Natural or Smooth

Detail 4 anchor holes

Coverage 0.72 m² // 7.75 ft²



KONKRETE 3

1300 x 530mm

51 3/16" x 20 7/8"

Weight 9.4kg // 20.7 lbs

Thickness 13mm // 0.5"

Finish Natural or Smooth

Detail 3 anchor holes

Coverage 0.69 m² // 7.42 ft²



KONKRETE SQ

900 x 900mm

35 7/16" x 35 7/16"

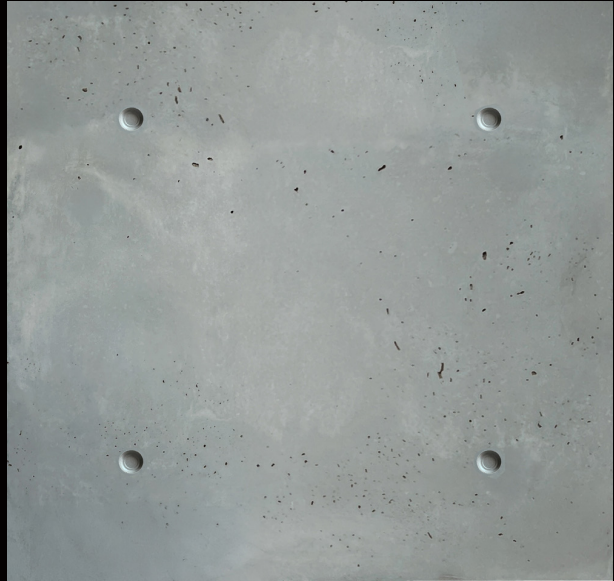
Weight 11kg // 24.3 lbs

Thickness 13mm // 0.5"

Finish Natural or Smooth

Detail **4 anchor holes**

Coverage 0.81 m² // 8.72 ft²



KONKRETE 2

1000 x 500mm

39 3/8" x 19 11/16"

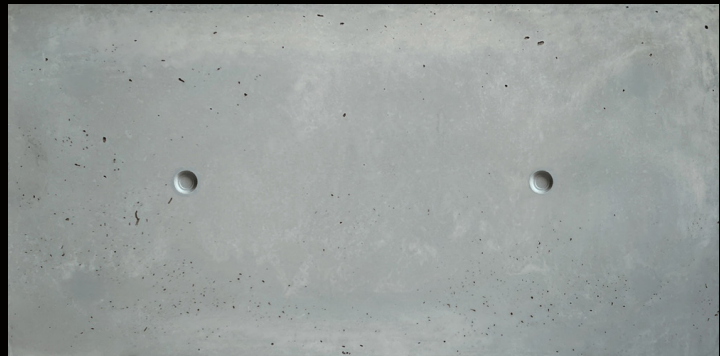
Weight 6.8kg // 15 lbs

Thickness 13mm // 0.5"

Finish Natural or Smooth

Detail **2 anchor holes**

Coverage 0.5 m² // 5.38 ft²



KONKRETE X

1200 x 600mm

47 1/4" x 23 5/8"

Weight 9.8kg // 21.6 lbs

Thickness 13mm // 0.5"

Finish Natural or Smooth

Detail **No anchor holes**

Coverage 0.72 m² // 7.75 ft²



KONKRETE XL

1300 x 800mm

51 3/16" x 31 1/2"



Weight 14.1kg // 31.2 lbs

Thickness 13mm // 0.5"

Finish Natural or Smooth

Detail **No anchor holes** OR **4 anchor holes**

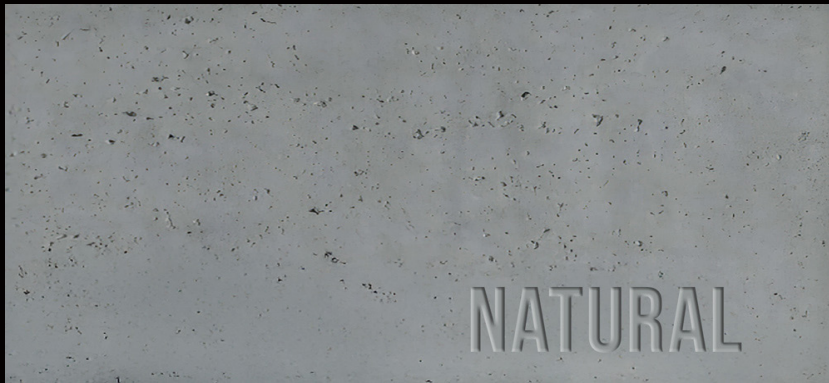
Coverage 1.04 m² // 11.19 ft²



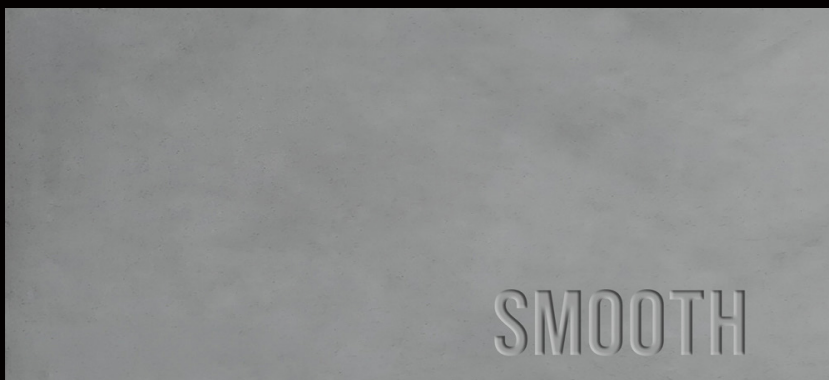
UHPC

What is the difference between natural or smooth finish?

Both finishes reveal natural concrete mottling and tonal movement inherent to real concrete.



Natural finish features randomized pitting and subtle texture, offering raw character and an organic feel.



Smooth finish offers a clean refined surface free of pitted holes — ideal for minimal, modern spaces.



Product specification sheet

MODEL	PANEL SIZE	THICKNESS	ANCHOR HOLES	FINISH	COLOUR
Konkrete 4	1200x600mm	13mm	4	Natural /Smooth	*
Konkrete 3	1300x530mm	13mm	3	Natural /Smooth	*
Konkrete SQ	900x900mm	13mm	4	Natural /Smooth	*
Konkrete 2	1000x500mm	13mm	2	Natural /Smooth	*
Konkrete X	1200x600mm	13mm	0	Natural /Smooth	*
Konkrete XL	1300x800mm	13mm	0/4	Natural /Smooth	*





CONCRETE GREY

SMOKE

GUNMETAL

CORAL

SAND DOLLAR

DESERT DUNE



Concrete colour

FLOAT UHPC panels embrace the natural authenticity of concrete. Every panel is **coloured with UV-stable iron oxide pigments** added into the concrete mix for consistent through-body colour. This process avoids the use of dyes and ensures that colour stays true over time—**fade-resistant and environmentally neutral.**

As with all mineral-based materials, subtle variations in tone and texture may occur—particularly in darker shades like Gunmetal. These natural differences add authenticity and visual depth. **We recommend ordering the full project quantity at once, as batch-to-batch shifts are possible.**

Please note:

Printed and digital samples may differ from actual product.
Custom colours can be produced on request.



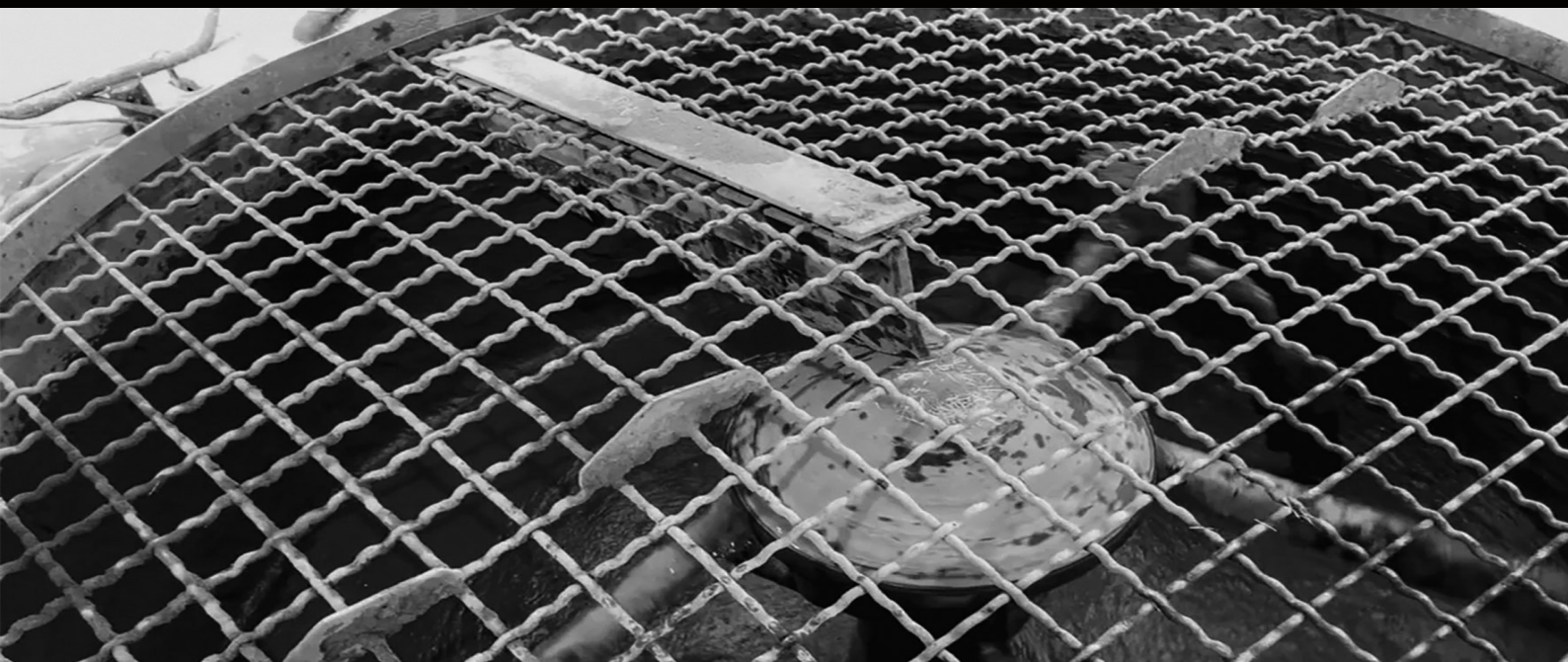


The science behind our **Ultra High-performance** concrete.

Material DNA



FLOAT UHPC are crafted through a controlled manufacturing process that merges precision with the human touch. **Our proprietary mix is composed of high-grade cement, pozzolanic binders, natural mineral fine aggregates and performance enhancing admixtures.** Each panel undergoes a precise curing process to ensure dimensional stability, high early strength and consistent quality. Despite their thickness of just 13mm, our panels exhibit excellent compressive strength, impact resistance and flexural performance.



Smart. Safe. Silica free.



Our panels are free of harmful crystalline silicon dioxide (< 1 M.-%) offering peace of mind to those who cut or install our panels. **This silica-free formulation supports healthier work environments** and complies with evolving international standards. In traditional concrete products, silica poses serious long-term health risks, including silicosis and other respiratory issues.

Engineered reinforcing for lasting endurance.



Though FLOAT panels appear minimal and refined, they're built with a dense network of internal reinforcement that works behind the surface. **A matrix of glass micro-fibres and macro-fibres runs through each panel, providing flexural strength and preventing microcracks.** Our reinforcement system enhances the material's ability to withstand tension, impact and vibration.



Performance Data



Panel Thickness	13mm (0.5")
Panel Weight	13.6 kg/m ² // 2.8 lbs/ft ²
Compressive strength	6600 psi – 7900 psi // 45–55 MPa
Flexural strength	2,400 psi - 3,100 psi // 17-21mpa
Impact Resistance	High / Class I
Density	1,190 kg/m ³ (74.3 lb/ft ³)
Thermal expansion	9.7 to 10.4 × 10 ⁻⁶ /°C // 5.4 to 5.8 × 10 ⁻⁶ in/in/°F
Water Absorption (sealed)	<1%
Fire Classification	Non-combustible EN 13501-1: A1 (Non-combustible) – EU/SA) ASTM E84: Class A (Equivalent to UL 723 – USA) AS 1530.1 & AS 1530.3: Non-combustible
Thermal Insulation(R-value)	0.110 m ² ·K/W // 0.626 ft ² ·°F·hr/BTU
Thermal conductivity (K-value)	0.118 W/m·K (AS/NZS 4859.1) 0.819 BTU·in/hr·ft ² ·°F (ASTM C518 / C177)
UV & Weather Resistance	High
Color Options	Through-body with UV-stable iron oxide pigments
Sustainability	VOC-free, non-toxic.

Features + Advantages

- **Compatible with all wall assemblies/substrates**
- **Highest strength-to-weight ratio in its class**
- **Impermeable, chloride and carbonation resistant**
- **Excellent freeze-thaw resistance and strength retention**



What level of fire resistance do our panels offer?



FLOAT UHPC panels are completely non-combustible. They will not ignite, propagate flames or release harmful smoke. The material's fire resistance is built into its mineral composition—no coatings required. FLOAT also complies with international standards including ASTM E136, SANS 10177 and AS 1530.1.

Advanced waterproofing protection.



FLOAT panels combine two layers of defence against water: **a high-density matrix on the face that limits porosity and a penetrating polymer hybrid sealer that provides full-surface waterproofing.** This integrated system allows the panels to withstand exposure to rain, humidity and ambient moisture—making them equally effective in exterior installations and moisture-prone interior applications.







Designed for acoustic comfort and spatial clarity.

Our panels help create quieter, more serene spaces by reducing sound reflection and controlling reverberation. **The material matrix combined with lightweight composition naturally dampens sound energy**—enhancing clarity and calm in interior applications.

Up to 6 times better insulation than regular concrete.



Our cladding is developed to **support energy-efficient design through their inherent insulating properties**. With a thermal conductivity (K-value) of 0.118 W/m·K and a thermal resistance (R-value) of 0.110 m²·K/W at 13 mm thickness, they offer a notable improvement over standard concrete.

FLOAT panels deliver enhanced thermal performance when installed using either a ventilated rainscreen system or high-tack polymer adhesive. **Both methods create a discreet air cavity behind the panel, acting as a natural thermal break that reduces heat transfer**, stabilises interior temperatures and improves overall envelope efficiency—year round.





Sustainability at the core.

FLOAT concrete panels are engineered for **a future where performance and environmental responsibility are inseparable**. As architecture moves toward low-impact solutions, FLOAT offers a material that meets the demands of form, function and footprint.

Driving green concrete.

Our mineral-based UHPC mix includes recycled industrial by-products like fly ash, slag and silica fume—**reducing cement content and cutting embodied CO₂ by 32%**. These SCMs improve strength and durability while lowering the environmental footprint, with no compromise on aesthetics or performance.

Smarter resource use

- **Water efficiency:** Our production facilities are equipped with closed-loop water recycling systems that significantly reduce freshwater consumption. Process water from casting and cleaning is captured, filtered and reused.
- **Energy efficiency:** Optimized curing + drying methods reduce energy use, supported by ongoing investment in renewable-powered manufacturing.
- **Less waste:** Lean batching ensures minimal excess. Any remaining material is used to cast our Test samples—reducing waste to virtually zero.

Low-carbon innovation

- **Reduced panel weight** lowers fuel consumption during shipping and handling —minimising carbon emissions throughout the supply chain.
- **Recycled aggregates**—fine glass and reclaimed concrete, are integrated into our mix to reduce raw material use and support a reuse production model.
- **Carbon capture techniques** such as CO₂ injection are actively under research and development.

Circular design from day one

From modular sizing to disassembly-ready mounting, **our panels are made for reinstallation and recyclability**. They support both passive performance strategies and material recovery at end of life—perfect for buildings that value both environmental and structural longevity.

Future commitment for a lighter footprint.

- Reaching carbon-neutral or carbon-positive production by 2030
 - Integrating CarbonCure or CO₂-curing technology
- Partnering with researchers and suppliers to pioneer green concrete.



KONKRETE
SERIES.

Comparing our panels with cement board?

FLOAT vs Cement board

Why our UHPC panels aren't just different—they're superior.

Better insulation by design

With an R-value of $0.110 \text{ m}^2\cdot\text{K}/\text{W}$, our panels offer more than twice the thermal resistance of cement boards (approx. $0.05 \text{ m}^2\cdot\text{K}/\text{W}$). Designed with a low-conductivity UHPC mix.

Unmatched strength & durability

High impact resistance and flexural strength, low thermal expansion and non-combustible by nature — FLOAT panels are built to endure.

Premium by nature

Every FLOAT panel features natural variation, depth and texture that fiber cement coatings can't replicate. The result? A premium, timeless surface that elevates any space.

Sustainable & Silica-free

No added crystalline silica. Reduced cement. Recycled materials. No coatings. FLOAT is safer for installers, better for the planet and future-ready.





Installation overview

Simple, flexible installation—designed to suit your project.
Download our install guide for more information.

High-Tack Polymer Adhesive

Fast. Economical. Effective.

Panels can be bonded directly to most substrates using a high-performance, high-tack polymer adhesive. This method creates a secure, long-lasting hold without visible fixings—perfect for clean, uninterrupted surfaces. It also forms a thin air cavity behind the panel, improving thermal performance and acoustic control while keeping installation time and cost minimal.

Mechanical fixing

Rear screw fixing with Bracket or Split batten

Economical. Effective. Secure.

Panels are fixed from the back using a 3mm pilot hole and 5mm wood screws into pre-defined anchor points. A stainless steel bracket or split batten system is then used to attach the panel to the substructure. This concealed method allows for clean, invisible fixing, easy removal and alignment flexibility—ideal for façades, ceilings or modular wall systems.

Anchor hole screw fixing

Secured into substrate.

Panels can also be surface-mounted through the pre-formed anchor holes, using visible screws finished with architectural-grade caps. This method is ideal for service areas, soffits or interior applications where quick access and simple replacement are key.





Quality control

All our panels are manufactured under a tightly controlled process that balances high-tech batching with the precision of human craftsmanship.

Every production batch undergoes rigorous testing for compressive strength, colour consistency, dimensional accuracy, and surface finish.

Our quality assurance standards exceed industry standards, so every panel that leaves our facility meets yours.

Meticulous
attention
to detail.



Global shipping

We offer worldwide shipping across all major regions, working with trusted logistics partners to ensure reliable, damage-free delivery. Panels are safely packed and crated for both small and large orders, with tailored transport solutions for international projects. Whether you're ordering one pallet or a container load, we make sure your material arrives on time and in perfect condition.



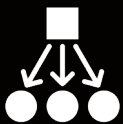
KONKRETE
SERIES. **UHPC**



Empowering architects & designers with advanced concrete

We've worked alongside architects and visionaries from the beginning translating creative vision into real-world applications. **If you're working on a concept, we're here to support you with samples, specs and collaboration from the early stages.** Our UHPC panels help streamline construction, reduce costs and deliver a refined material experience.

Together
for **better**
architecture



Become a reseller or distributor

This is more than a product—it's a movement toward smarter, more sustainable design. **As a reseller you'll gain access to premium ultra high-performance panels, marketing support and quality leads.** FLOAT stands apart for its organic appeal, performance and sustainability. Let's grow together—consciously, creatively and with impact.



**For those
who choose honesty
over imitation.**

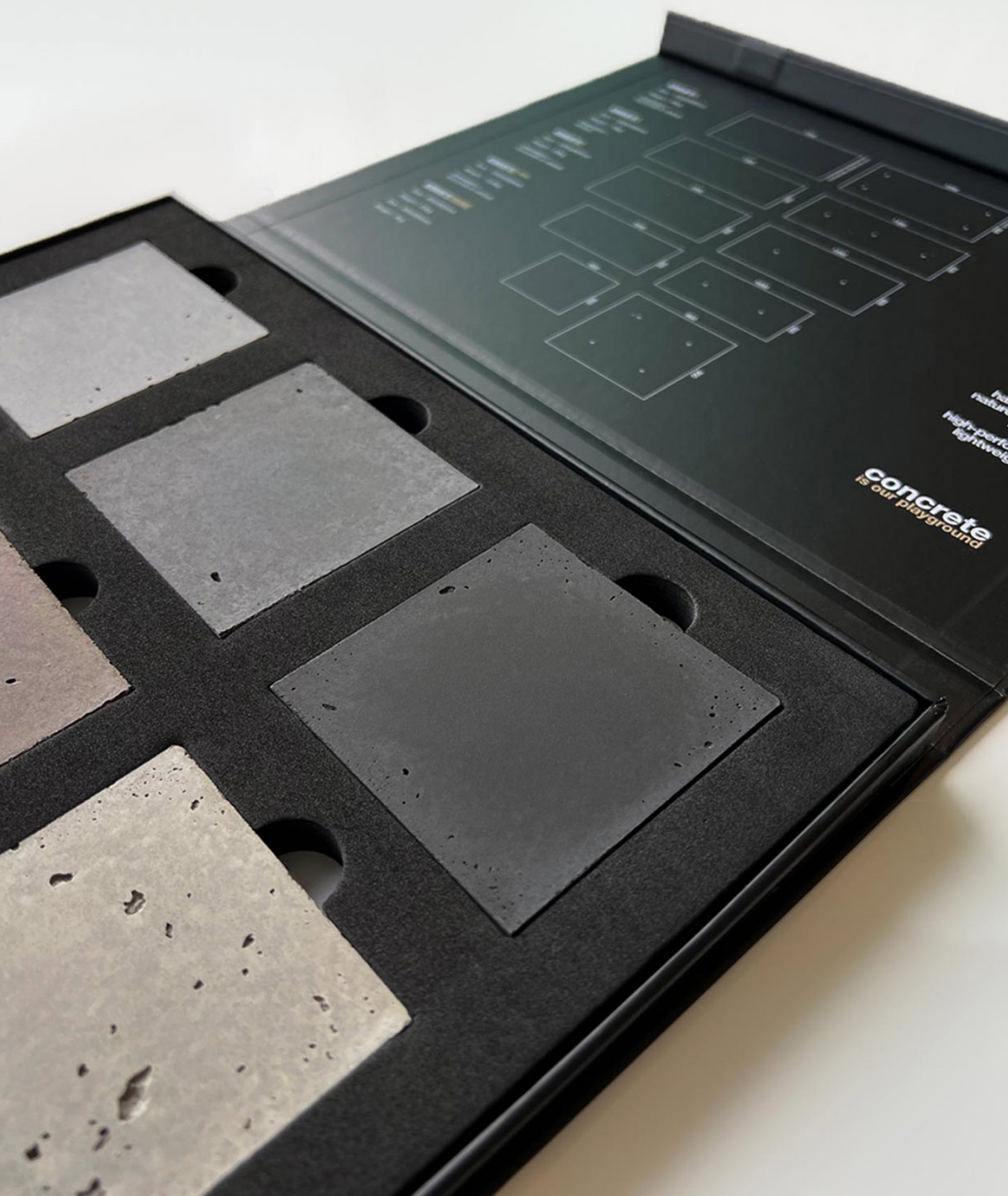
**The ones
who believe in
extraordinary.**



Need samples?

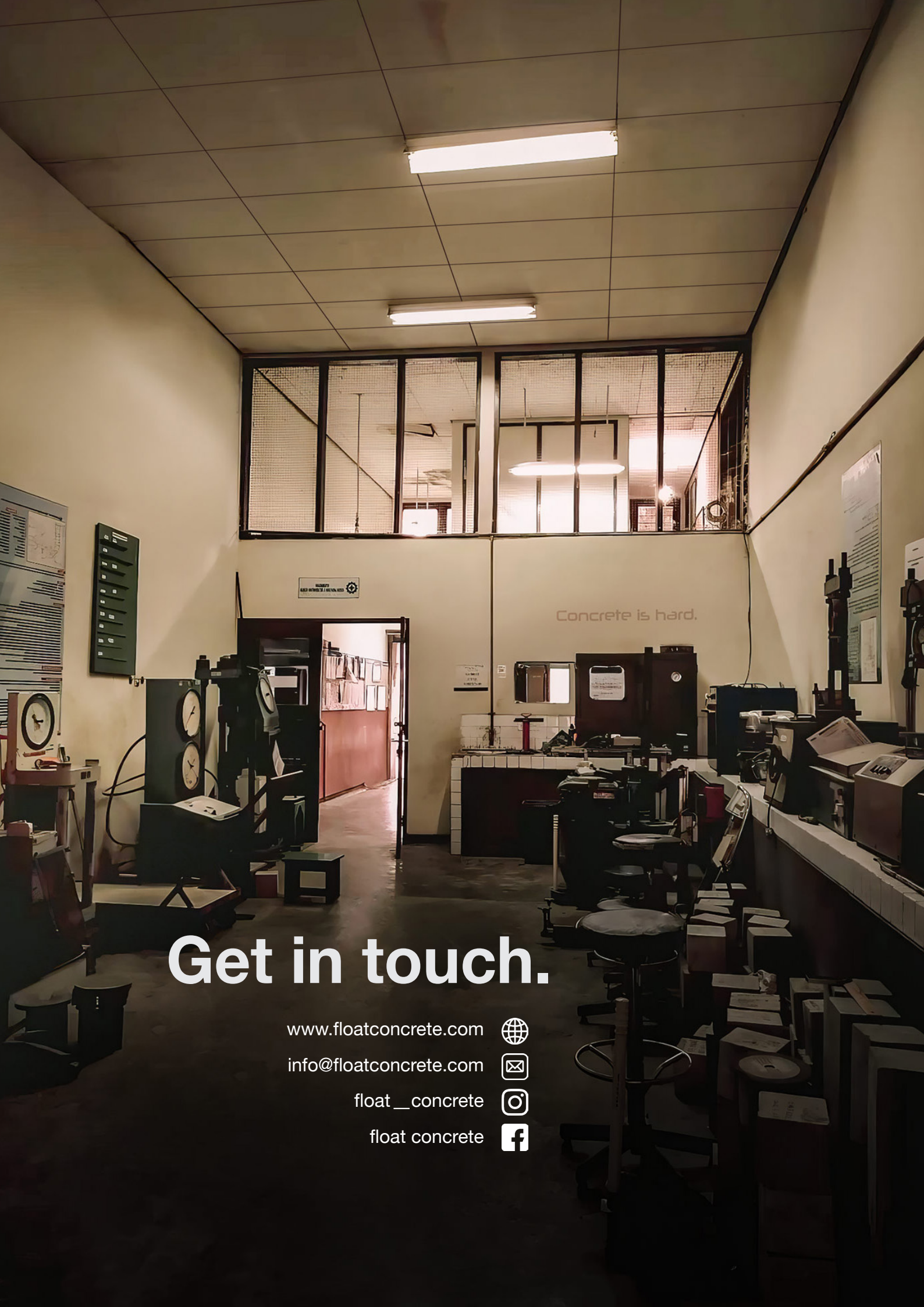
Order our KonkreteSeries+ UHPC concrete panel sample pack
featuring six colors that showcase our complexions and textures.

floatconcrete.com/samples



concrete
is our playground

High-performance
lightweight



Concrete is hard.

Get in touch.

www.floatconcrete.com



info@floatconcrete.com



[float__concrete](#)



[float concrete](#)



FLOAT

