

# Dining Rooms





A SHOWCASE OF BESPOKE SEATING AND DINING DESIGN, BLENDING CREATIVITY WITH CRAFTSMANSHIP. FROM ECLECTIC UPHOLSTERED CHAIRS IN BOLD PATTERNS AND COLORS TO A GRAND DINING HALL SETTING WITH A CUSTOM-MADE TABLE, EACH PIECE EMPHASIZES STYLE, COMFORT, AND TIMELESS ELEGANCE.







BESPOKE DINING TABLE DESIGN THAT BALANCES ELEGANCE WITH FUNCTIONALITY. FEATURING SLEEK LINES, RICH WOOD FINISHES, AND REFINED DETAILING, IT IS CRAFTED TO SEAT LARGE GATHERINGS WITH SOPHISTICATION. PERFECT FOR BOTH FORMAL DINING ROOMS AND LUXURY HOSPITALITY SPACES.



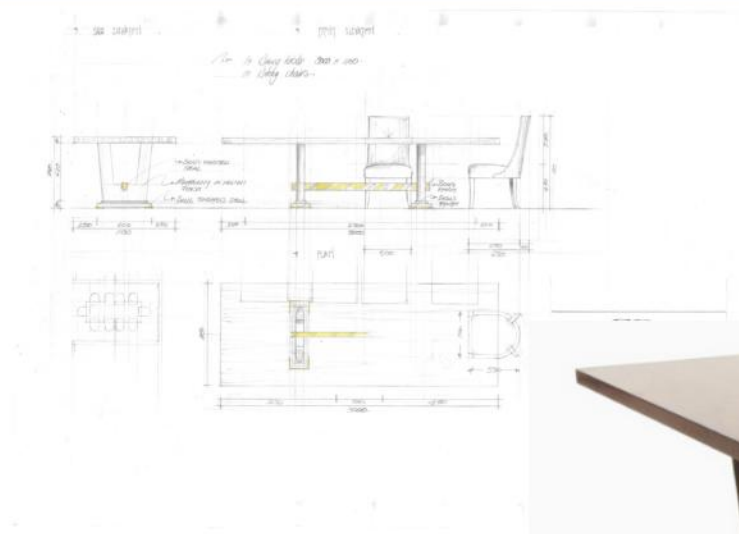






BESPOKE DINING SETTINGS SHOWCASING THE VERSATILITY OF DESIGN. FROM CONTEMPORARY WOODEN TABLES PAIRED WITH TRANSPARENT AND CLASSIC CHAIRS TO INTIMATE ROUND DINING ARRANGEMENTS AND ELEGANT RESTAURANT-STYLE SETTINGS, EACH PIECE BLENDS CRAFTSMANSHIP, COMFORT, AND TIMELESS APPEAL



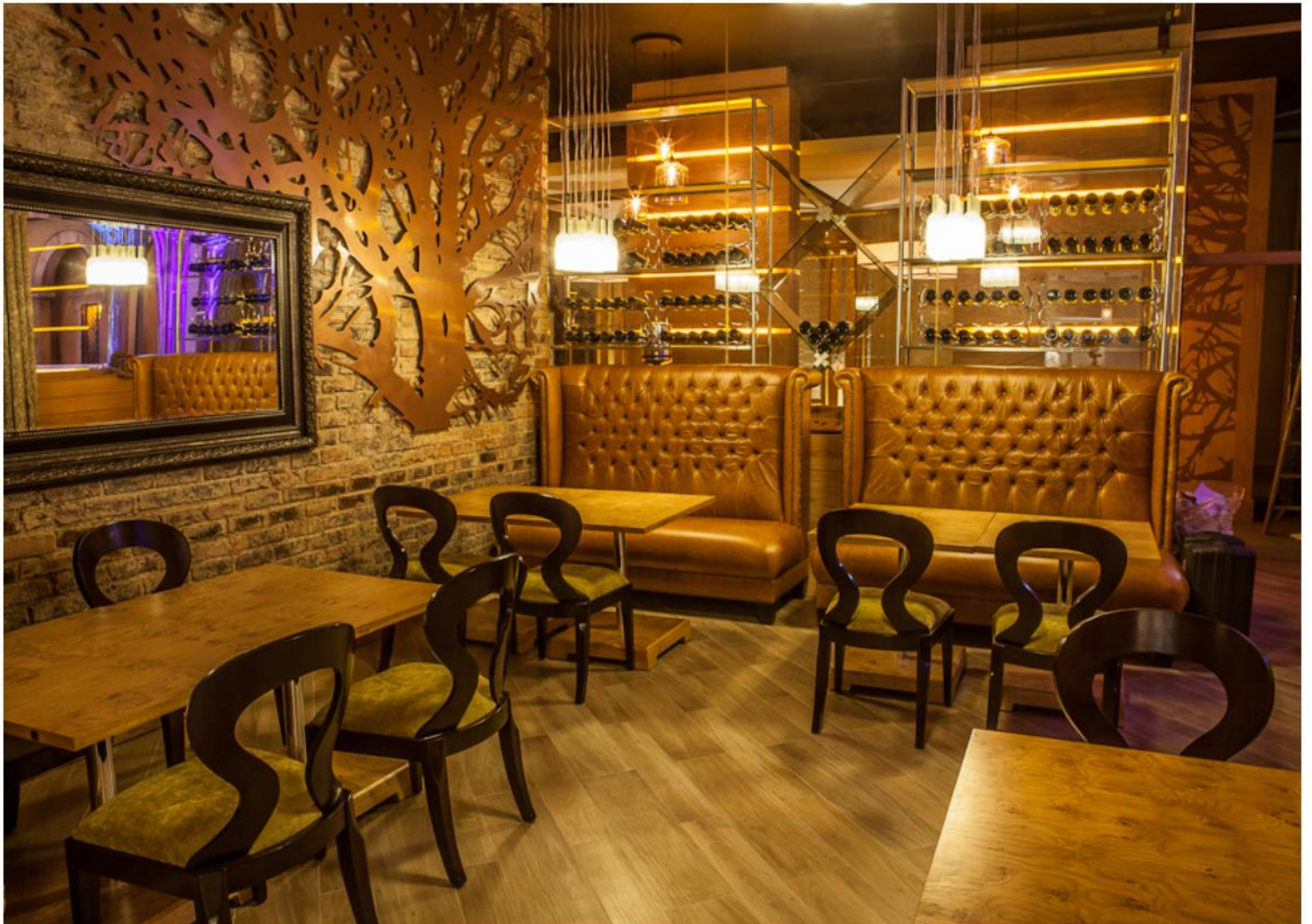




A VERSATILE SHOWCASE OF DINING DESIGNS – FROM AN INTIMATE ROUND TABLE WITH CLASSIC UPHOLSTERED CHAIRS, STYLED WITH FLORAL ACCENTS, TO A SLEEK MODERN BOARDROOM-STYLE DINING TABLE WITH LEATHER SEATING.

















# Dining Chairs

