



moll NEWS!

**Product launch S1**

moll NEWS!  
**Product launch S1**

The first sit-stand stool  
from moll!





## **Dear partners,**

We are pleased to introduce you  
our brand new moll product:

### **The S1.**

The S1 sit-stand stool combines high-quality,  
young design with unbeatable comfort  
and the highest ergonomic standards.

A double 3D mechanism makes this stool so special - and super flexible, super comfortable, perfect for the back!

**The well thought-out approach of the S1 is convincing straight down the line.**

And so robust that it makes it impossible to tip over!

A perfect combination of design and ergonomic functionality - a typical moll.





## Outstanding in every way:

The dual 3D mechanism always offers a horizontal sitting position - almost regardless of how much the stool column is angled.

This guarantees a relaxed and safe sitting experience..

A 3D mechanism under the seat and another 3D mechanism built into the solid, non-slip base plate support the urge to move and at the same time help to strengthen the back muscles.

The stool consists of 3 elements that simply need to be put together without any effort:

- The upholstered seat element with release rail and **3D mechanism** with beveled seat edge.
- **Stepless height adjustment** (gas spring in 2 sizes M/L) that can be operated from any sitting position using a release rail.
- The extremely **solid and non-slip** base plate with built-in 3D mechanism.





The **replaceable and washable** covers with anti-twist protection are a great advantage for ever-changing tastes.

Our high-quality "Spice" fabric in **eight fresh colors** offers plenty of choice.

The little sitting sensation S1 gives you the freedom to move in any direction and still sit securely at all times - the **perfect addition** for anyone who likes to **keep moving at their desk job** and appreciates a healthy work-life balance.

**More dynamic sitting  
is not possible!**





For the S1, you will also receive a portfolio of **marketing materials** for your advertising measures and **support for the presentation** of the S1 in your showroom and webshop.

Please contact us now to place your order.

**Best regards from Gruibingen**  
**Your moll team!**



S1 M ↕ 53,5 – 72,5 cm

S1 L ↕ 60,0 – 85,5 cm



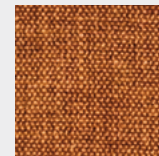
3D rocking function at the top: 12°

3D swivel function at the bottom: 7°

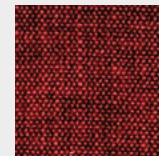
Hard Facts  
S1



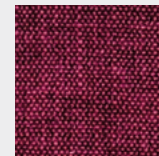
CAPPUCCINO



MANDARINE



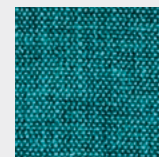
RED



PINK



DEEP BLUE



TURQUOISE



GREEN



GREY

SPICE fabric: 35.000 abrasion cycles

Load capacity: 110 Kg