



# UNIQUE

Product Guide 2023/2024



# INDEX

EDITORIAL	04
BRAND PROMISE	06
DESKS	12
LIGHT	50
STORAGE SPACE	56
SEATS	72
ACCESSORIES	84
POWER SUPPLY	86
TEXTILES	87

Symbols:  
↔ width | ⇨ depth | ⬆ height | ⚖ weight | 📦 volume | 📦 colli







Dear Reader,

In the world of mainstream and mass production, we decided decades ago to produce only high-quality, well thought-out and durable functional furniture.

At the first glance, not so good for us, because the furniture lasts a lifetime and beyond. However, in view of our responsibility to future generations, we believe that this decision has no alternative and so we continue to go this path.

This consistent attitude is typical for a family business deeply rooted in our region. Landscape shapes people and so, in addition to the characterizing roughness of the Swabian Alb, there is still enough room for great empathy and truthfulness.

Martin Moll

**Martin Moll** is responsible for the development and design of the moll products with passion and flair.

# OUR BRAND PROMISE

## CLASSIC

Longevity has always been one of the most important company values at moll. Even the company founder Andreas Moll already focused on durable products almost 100 years ago. Furniture that he created is still in use today.

Longevity not only means outstanding quality, but also a timeless design, because many goods would still be usable, but they often no longer meet the current taste of the time.

Achieving timeless design in the global sense is our claim for every single product and at the end economical, because it is reason-driven, basis for our responsibility.

It is a great pleasure for us to create and preserve the desirability of our classics through high variance in material and color, paired with technical updates.

# REPAIRABILITY

Credible sustainability includes the easy reparability of products. This requires a small-scale and transparent design, which has its origins in our development department.

During development, moll attaches great importance to the fact that all non-electrical parts can be dismantled by the customer and that they can be replaced by spare parts.

However, the repair of electrical / electronic components may only be handled by moll directly due to safety reasons.

# INNOVATION

Our innovations relate to a sensible functionality and design to optimize the working and learning environment for the home. In addition to well thought-out fittings, this also includes problem-free assembly and initial operation. Many patents and other industrial property rights prove our competence here.

As different as the moll functional furniture may be, they all have one thing in common: the claim to be the benchmark in at least one of the categories - function, design, quality, sustainability.

This philosophy explains why the moll brand today stands for first-class products, solid workmanship, consistent „Made in Germany“ and the unmistakable character of an owner-managed company with a distinct idea in over 50 countries.

# ERGONOMICS

At moll, we consider ergonomic requirements for products to be just as important as their technical functionality. Both are intended to enable healthy learning and working from an early age.

Ergonomic furniture is functional, versatile in adjustment options, supports the spine, promotes muscle strengthening, has a preventive effect and promotes the development of our senses.

# QUALITY

The moll product promises - tested and certified:

## Made in Germany

moll products are developed in Gruibingen (DE) and manufactured according to high quality and safety standards.

## Patents

moll develops all fittings themselves. Many of these innovations are protected by industrial property rights.

## Sustainability

To ensure the preservation of forests, we obtain our wood from a certified supply chain. This guarantees an ecological and socially acceptable and sustainable forestry.

## Desk tops / Edges

The exceptionally smooth Softtouch surfaces in matt finish convey a soft, heat-reflecting feel that is convincing with its anti-fingerprint properties. Seamlessly welded edges complete the picture of a perfect finish.

## GS seal of approval

GS seal of approval ensures that the product complies with the requirements of the Product Safety Act (ProdSG), inspected and tested by the TÜV-Rheinland: [www.certipedia.com](http://www.certipedia.com)

## AGR

“Aktion Gesunder Rücken” tests products for their ergonomic properties.

## CARB II

moll wood-based materials are CARB II compliant with stricter limit values than E1 E05 according to the current test method. This is for purpose-bound use according to the current state of knowledge, harmless for health.

## Our responsibility

In our production, we use mainly environmentally friendly, recyclable and separable materials. In this way we keep the CO2 footprint of our products as small as possible.



# DESKS



T1



T2

DECOR:	Softwhite / Softgrey	Softwhite / Softgrey
DIMENSIONS:	M 120 x 72 cm	M-F 120 x 72 cm
	L 150 x 72 cm	M-C 120 x 72 cm
HEIGHTS:	69 - 114 cm (+ 5/10 cm)	69 - 114 cm (+ 5/10 cm)
BASE:	manual	manual
CHARACTERISTICS:	slender look	tilting desk top
DELIVERY:	2 modules	fully assembled
PAGE:	14	20



T6



T8



T8 Exclusive

Softwhite / Softblack	Softwhite / Softblack	Oak / Walnut
L 150 x 75 cm	M 115 x 75 cm	M 115 x 75 cm
	L 150 x 75 cm	L 150 x 75 cm
56 - 118 cm (+ 10 cm)	56 - 118 cm (+ 10 cm)	56 - 118 cm (+ 10 cm)
electrical	electrical	electrical
3+2 optional drawers	drawer and PM*	drawer and PM*
3 modules	fully assembled	fully assembled
32	38	40

\* Powermanagement



### Two sizes to make you feel good

T1 M ⇄ 120 cm | 72 cm

T1 L ⇄ 150 cm | 72 cm

Desk top (19 mm) with rounded corners

■ Softwhite ■ Softgrey

Desk top edge in multiplex look

### Options

Drawer with complete pull-out and compartment divider 2 x DIN A3

Socket Holder for multiple sockets

### Height adjustment

manual

⌘ desk heights 69 - 114 cm,  
optional + 5/10 cm with  
Height Adapters



Desk comes partially assembled

# T1

### Straightforward!

- Sit-stand desk with an appealingly reduced look
- Mechanically and thus flexibly usable in the room
- With extremely fast height adjustment
- Paired with a weight-dependent adjustable spring force, which neutralizes loads of up to 38 kg





## MANUAL HEIGHT ADJUSTMENT

Extremely fast height adjustment mechanism by lever pull and adjustable spring force.

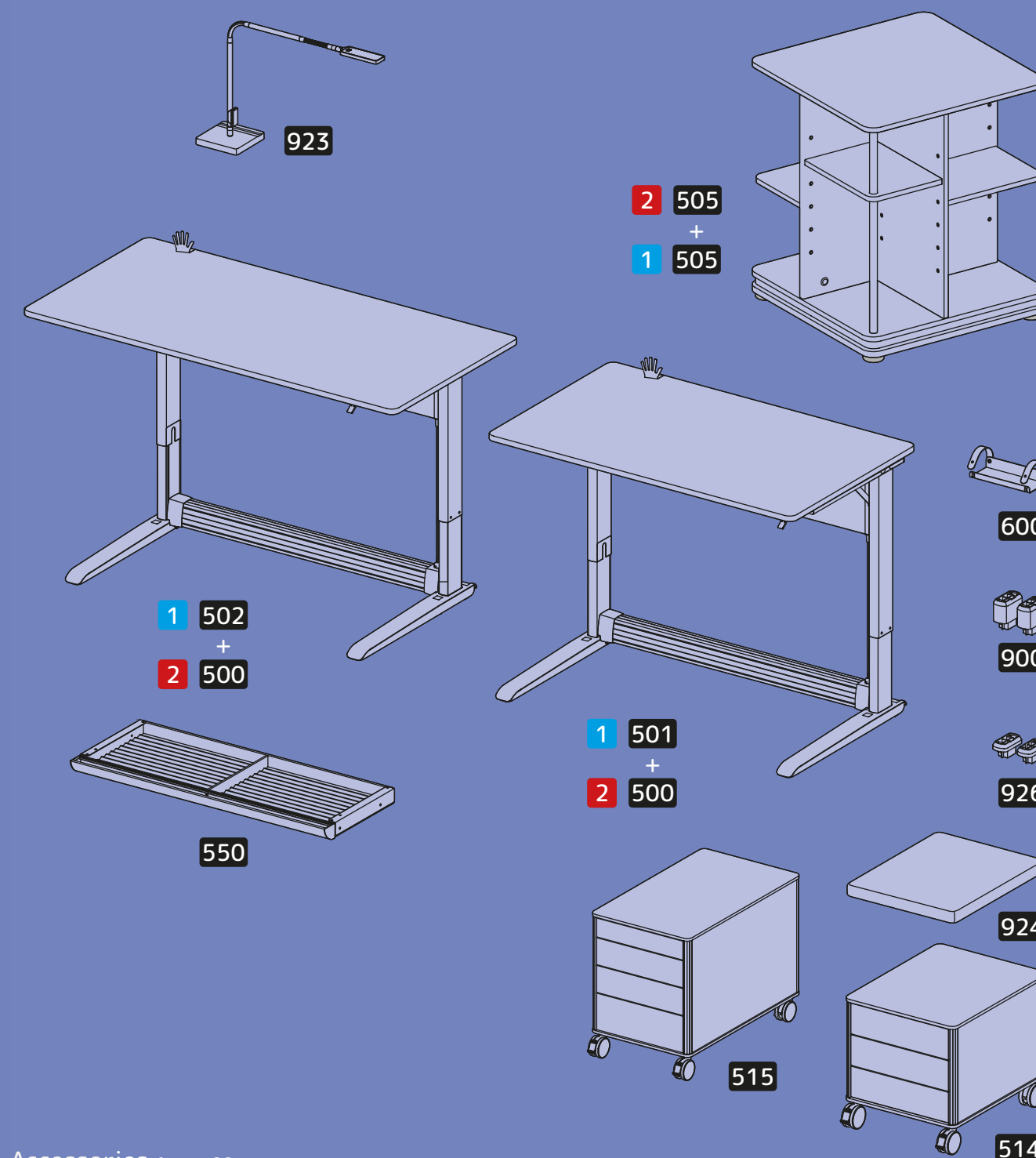
The T1 can be adjusted to a desk top load of up to 38 kg so the user does not have to use a lot of force to adjust the desk to the right position.

- Raster height adjustment to sitting or standing height
- Adjustment in less than 1 second
- Perfect for body heights from 1.55 - 1.95 m
- Optionally, with the Height Adapter the adjustment range can be extended by a further 5 / 10 cm



## DETAILS

- The desk tops have a Softtouch surface and edges in multiplex look.
- Telescopic tubular steel frame with synchronized spring package
- The runners are made of powder-coated die-cast aluminum, equipped with adjustable feet in the front and castors at the back, so that the desk can be moved easily
- The Cable Butler is always included in the scope of delivery



### Accessories from p.26

- 550 Drawer 120
- 600 Socket Holder
- 926 Express Height Adapter 5
- 900 Express Height Adapter 10

### Storage space from p.56

- 505 R9 Rotating shelf
- 514 C6 Container
- 515 C8 Container
- 924 Pad

### 501 + 500 T1 M

⇄ 120 cm | 72 cm | 69-114 cm | 45 Kg | 0,133 m³ | 2

### 502 + 500 T1 L

⇄ 150 cm | 72 cm | 69-114 cm | 48 Kg | 0,137 m³ | 2

T1 consists of 2 modules: 1 desk top + 2 feet to be ordered separately





### Two desk top options

T2 M-F : Full Size – fixed desk top

T2 M-C : Center Up – tilting mechanism of the desk top segment up to 20°

↔ 120 cm | ⚡ 72 cm

Desk and side panels (19 mm) with rounded corners

Desk top edge in multiplex look, side panel edge with same decor

■ Softwhite ■ Softgrey

### Options

Additions at the side / rear to extend the desk surface

Drawer with full extension and compartment subdivision 2 x DIN A3

Drawer Cover

Cable Duct Cover

### Height adjustment

manual

↔ desk heights 69 -114 cm,

optional + 5/10 cm with

Height Adapters



**Desk comes delivered fully assembled**

# T2

## The completely thought through desk

The T2 is a sit-stand desk for the work space: It can be extended at any time both in the desk top width up to 200 cm and in the desk top depth up to 100 cm using additions. Selectable from the start: 2 desk tops. Either as a full-size desk top or with an tilting desk top as a Center Up.





## MANUAL HEIGHT ADJUSTMENT

Extremely fast height adjustment mechanism by lever pull and adjustable spring force.

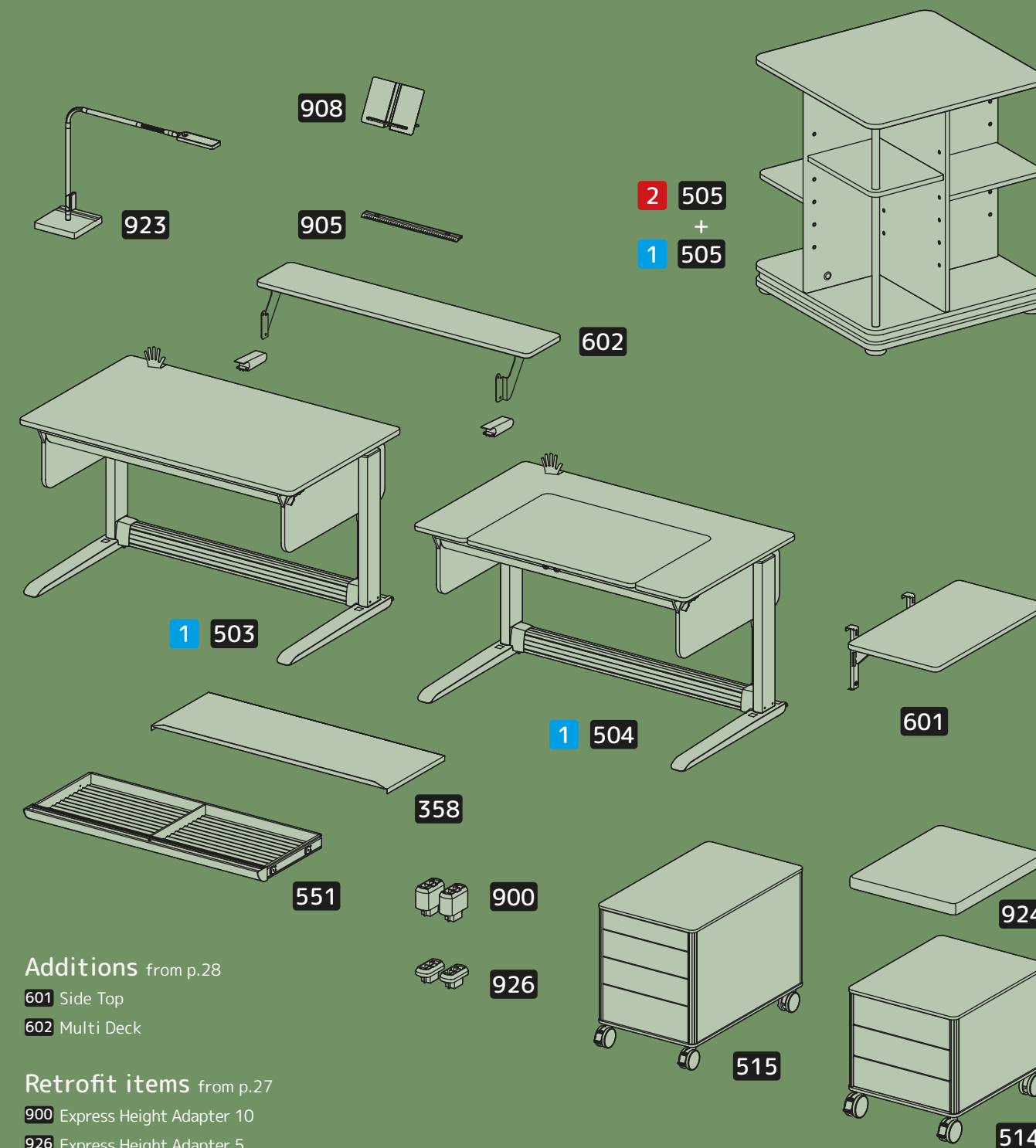
The T2 can be adjusted to a desk top load of up to 38 kg so the user does not have to use a lot of force to adjust the desk to the right position.

- Raster height adjustment to sitting or standing height
- Adjustment in less than 1 second
- Perfect for body heights from 1.55 - 1.95 m
- Optionally, with the Height Adapter the adjustment range can be extended by a further 5 / 10 cm



## DETAILS

- Gap-free additions to the desk surface due to Additions
- No gap between the inclinable desk top segment on the T2 M-C thanks to patented clamping protection and Self-Protection-System
- Under the front edge of the desk of the T2 M-C, an easy-to-use rope pull mechanism is integrated for the user to intuitively tilt the desk top segment.
- On the back side of the desk is the integrated cable duct made of aluminum profile
- Footbase with adjustable feet and castors
- The Cable Butler is included in the scope of delivery



#### Additions from p.28

- 601** Side Top
- 602** Multi Deck

#### Retrofit items from p.27

- 900** Express Height Adapter 10
- 926** Express Height Adapter 5
- 551** Drawer
- 358** Drawer Cover
- 905** Design Ruler
- 908** Design Book Holder

#### Storage space from p.56

- 505** R9 Rotating shelf
- 514** C6 Container
- 515** C8 Container
- 924** Pad

#### **503** T2 M-F (Full Size)

⇄ 120 cm | ⇄ 72 cm | ⇄ 69-114cm | ⇄ 49,8 Kg | ⇄ 0,6096 m³ | ⇄ 1

#### **504** T2 M-C (Center Up)

⇄ 120 cm | ⇄ 72 cm | ⇄ 69-114cm | ⇄ 52,4 Kg | ⇄ 0,6096 m³ | ⇄ 1

Desk comes delivered fully assembled



# ACCESSORIES T1



## 550 Drawer 120

↔ 103 cm | ↗ 42 cm | ⬆ 5,6 cm | ⬆ 4,066 Kg | 📦 0,027 m³ | 📦 1

- Aluminum drawer - loadable up to 6 kg
- Subdivision into two compartments by a dividing bar
- Drawer size 2 x DIN A3
- Plenty of storage space without restricting the legroom
- Two foam inserts prevent the contents from sliding around



## 600 Socket Holder

↔ 17 cm | ↗ 6,7 cm | ⬆ 0,257 Kg | 📦 0,001 m³ | 📦 1

- Allows to fix a multiple socket to the desk
- The socket holder is attached to the back wall of the desk
- Consists of powder-coated steel with two rubber tabs, Suitable for various socket sizes



# ACCESSORIES T1+ T2



## 926 Express Height Adapter 5

⬆ 5 cm | ⬆ 0,59 Kg | 📦 0,004 m³ | 📦 1

- The Height Adapter changes the base height by an additional 5 cm
- Desk heights 74 -119 cm with Height Adapter 5
- The Height Adapter is installed between the Footbase and the foot rail



## 900 Express Height Adapter 10

⬆ 10 cm | ⬆ 1,31 Kg | 📦 0,004 m³ | 📦 1

- The Height Adapter changes the base height by an additional 10 cm
- Desk heights 79 -124 cm with Height Adapter 10
- The Height Adapter is installed between the Footbase and the foot rail



## 903 Cable Butler

↔ 10 cm | ↗ 5 cm | ⬆ 8 cm | ⬆ 0,0493 Kg | 📦 0,003 m³ | 📦 1

- Included in delivery T1 / T2
- Cable plugs are held on the desk
- Can be clamped to desk tops up to 25 mm in thickness



## 908 Design Book Holder

↔ 32 cm | ↗ 13 cm | ⬆ 24 cm | ⬆ 0,3645 Kg | 📦 0,002 m³ | 📦 1

- Foldable book and tablet holder
- Two pull-out clamps fix the book page or the tablet
- Retaining brackets allow the book holder to be hooked in even when the desk top is tilted



# ADDITIONS T2



## 601 Side Top

↔ 40 cm | ↗ 72 cm | ⬆ 6,1 Kg | 📦 0,036 m³ | 🗑 1

- Desk extension in width - loadable up to 12 kg
- Horizontal side shelf with rounded corners
- Height adjustable in two steps
- Can be mounted on both sides
- Fastened by two supports on the side of the desk
- Softtouch surface ■ Softwhite or □ Softgrey
- Edge of the plate in multiplex look



## 602 Multi Deck

↔ 120 cm | ↗ 22 cm | ⬆ 5,3 Kg | 📦 0,026 m³ | 🗑 1

- Desk top extension in the desk depth - loadable up to 12 kg
- Flat storage surface with rounded corners
- Fastening by two beams at the back of the desk
- Aluminum Footbase extension on the desk legs provide extra stability
- Softtouch surface ■ Softwhite or □ Softgrey
- Edge of the plate in multiplex look

# ACCESSORIES T2



## 551 Drawer

↔ 103 cm | ↗ 42 cm | ⬆ 5,5 cm | ⬆ 2,8 Kg | 📦 0,027 m³ | 🗑 1

- Aluminum drawer - loadable up to 6 kg
- Subdivision into two compartments by an dividing bar
- Drawer size 2 x DIN A3
- Plenty of storage space without restricting the legroom
- Two foam inserts prevent the contents from sliding around



## 358 Drawer Cover

↔ 103 cm | ↗ 37 cm | ⬆ 4 cm | ⬆ 1,3928 Kg | 📦 0,02 m³ | 🗑 1

- Prevents the content from getting dusty and provides visual protection especially for tilted desk top segment
- Material: High quality aluminum composite panel



## 905 Design Ruler / anti-slip device

↔ 54 cm | ↗ 5 cm | ⬆ 1,2 cm | ⬆ 0,3377 Kg | 📦 0,008 m³ | 🗑 1

- Solid aluminum profile
- Double function: The magnetic Design Ruler also functions as an anti-slip device when the desk top segment is tilted
- magnetic function only compatible for Center Up







# T6 L

## Desk body with five storage compartments

T6 L	↔ 150 cm   ⚙ 75 cm		
Decor	■ Softwhite	■ Softblack	
Deco panels	as Decor		
Aluminium profile	■ White	■ Silver	■ Black
Motor column	■ White	■ Black	

## Powermanagement

Integrated 3-socket strip (p. 86)  
optional 1 double USB port in exchange with one power outlet

## Options

Storage compartments can optionally be equipped with up to 3 drawers at the front and up to 2 drawers in the back.

Front pieces in the colors:

■ Softwhite	■ Softbeige	■ Softpink	■ Softblack
■ Oak	■ Walnut		



## Height adjustment

electromotive  
↕ desk heights 56 - 118 cm,  
optional + 10 cm  
with Height Adapter

Desk comes partially assembled

## Encouragement makes the difference!

Work and study desk, play table, coffee table, kitchen table, dining table, universal table... The T6 is not to be overlooked. And it doesn't want to be, because it allows the owner to make a clear statement through the choice of body color, aluminum profiles and drawer fronts.





## ELECTRIC MOTOR HEIGHT ADJUSTMENT

Height adjustment with two-hand or one-hand operation and triple safety system (1-3)

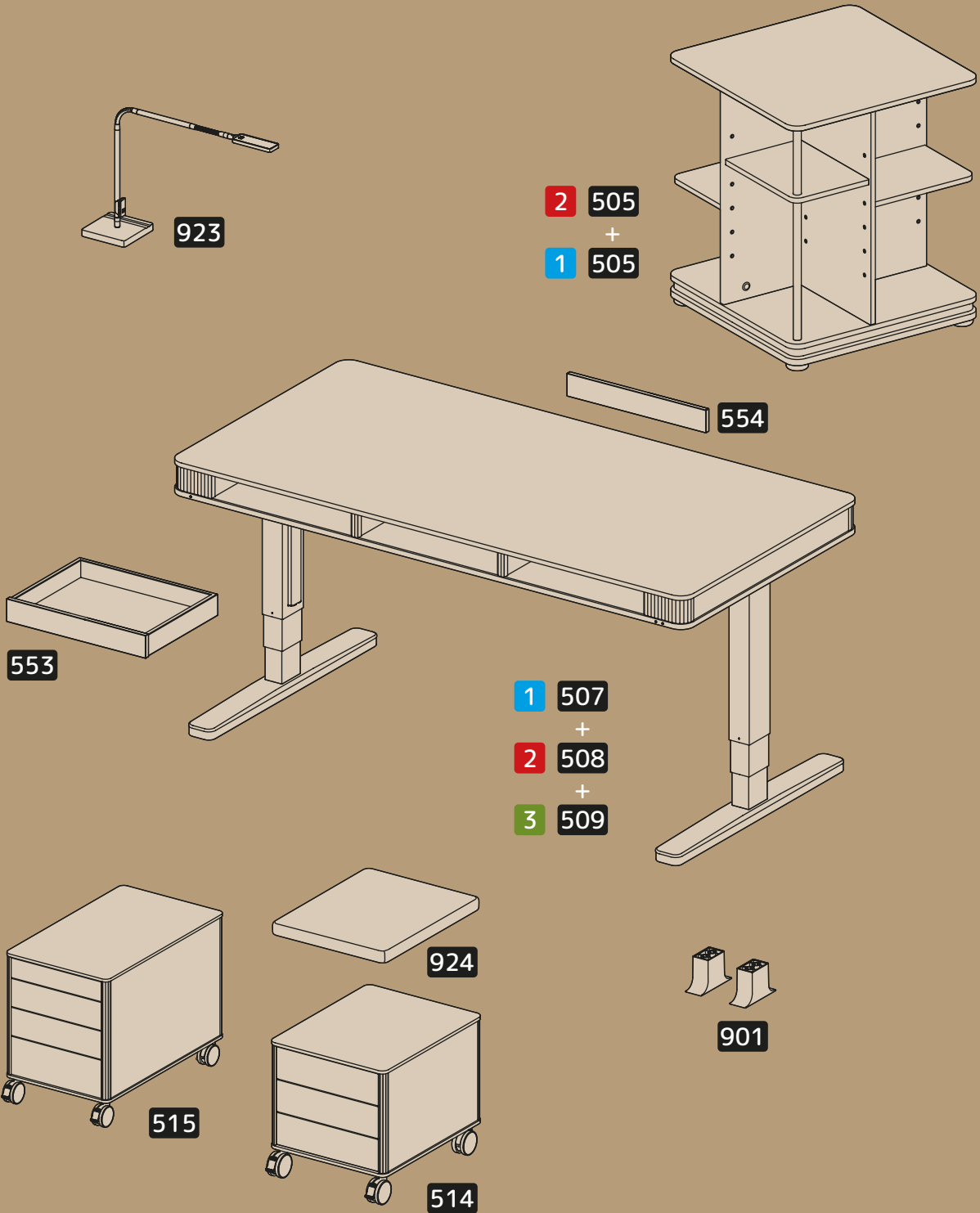
Effortlessly transforms the desk from a sitting to a standing desk to meet ergonomic requirements. The standard auto-stop function is a safety necessity in private rooms.

- 1 Convertible from two-hand to one-hand operation
- 2 Lockable adjustment function
- 3 Collision detection / auto-stop function
  - Adjustment range: 56 - 118 cm
  - Adjustment range with Height Adapter + 10 cm
  - Body height: 1,25 - 2,00 m



## DETAILS

- Desk top 14 mm with rounded corners and Softtouch/anti-fingerprint surface
- Desk body in sandwich construction, so that it also looks tidy and attractive from below. A circumstance not to be neglected, since the body can be seen from underneath at bar desk height
- Unused power management can be covered by the optional Back Cover
  - The T6 has the same look all around and is therefore perfect for free positioning in the room
- Footbase with adjustable feet and castors



Additions from p.48

- 553 Drawer
- 554 Back Cover
- 901 Height Adapter

Storage space from p.56

- 505 R9 Rotating shelf
- 514 C6 Container
- 515 C8 Container
- 924 Pad

507 + 508 + 509 T6 L

↔ 150 cm | ≡ 75 cm | ⤴ 56-118 cm | ⬆ 51 Kg | ▢ 0,167 m³ | ▢ 3

T6 L consists of 3 modules: 1 body + 2 motor column + 3 Footbase, order separately  
Optional Additions order separately





### Desk body with drawers

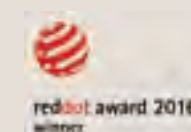
T8 M ⇄ 115 cm | 75 cm

T8 L ⇄ 150 cm | 75 cm

Decor  Softwhite  Softblack

Deco panel  White  Black

Motor column as Decor



Oak  Walnut

### Powermanagement drawer

with integrated cable duct and 2 x 3-socket strip (P.86)

optional 1 double USB port in exchange with a power outlet

T8 M ⇄ 81,6 cm | 12,6 cm | 5,2 cm

T8 L ⇄ 116,6 cm | 12,6 cm | 5,2 cm

### Drawer compartments

T8 M ⇄ 85,5 cm / 4 compartments | 30 cm

T8 L ⇄ 119 cm / 6 compartments | 30 cm

### Option

Cable duct under  
the desk top

### Height adjustment

electromotive

⇄ desk heights 56 - 118 cm,

optional + 10 cm

with Height Adapter.



Desk comes fully assembled

# T8

## Pure performance!

The T8 is exceptional.

Its captivating simplicity is interrupted only by the concise joint pattern - less is more.





### Desk body with drawers

T8 M Exclusive ⇄ 115 cm | 75 cm

T8 L Exclusive ⇄ 150 cm | 75 cm

Decor ■ Oak ■ Walnut

Deco panel ■ White ■ Black

Motor column as Decor



### Powermanagement drawer

with integrated cable duct and 2 x 3-socket strip (P.86)

optional 1 double USB port in exchange with a power outlet

T8 M Exclusive ⇄ 81,6 cm | 12,6 cm | 5,2 cm

T8 L Exclusive ⇄ 116,6 cm | 12,6 cm | 5,2 cm

### Drawer compartments

T8 M Exclusive ⇄ 85,5 cm / 4 compartments | 30 cm

T8 L Exclusive ⇄ 119 cm / 6 compartments | 30 cm

### Option

Cable duct under the desk top

### Height adjustment

electromotive

⇄ desk heights 56 - 118 cm,

optional + 10 cm

with Height Adapter.



Desk comes fully assembled

# T8 Exclusive

## A strong character!

With the T8 Exclusive, it is not without pride that moll refers to its origins as a carpenter's workshop almost 100 years ago. The connection to wood as a material is profoundly implemented here. With its veneered surfaces in solid wood look, it lends a stylish and homely atmosphere to any room.



## ELECTRIC MOTOR HEIGHT ADJUSTMENT

Height adjustment with two-hand or one-hand operation and triple safety system (1-3)

Effortlessly transforms the desk from a sitting to a standing desk to meet ergonomic requirements. The standard auto-stop function is a safety necessity in private rooms.

- 1 Convertible from two-hand to one-hand operation
- 2 Lockable adjustment function
- 3 Collision detection / auto-stop function
  - Adjustment range: 56 - 118 cm
  - Adjustment range with Height Adapter + 10 cm
  - Body height: 1,25 - 2,00 m



## DETAILS

- Powermanagement drawer with four cable outlets and space to store external power supplies and cables invisible so that the clear look of the desk is not disturbed
- Synchronized drawer with push-to-open function
- Drawer made of high-quality aluminum profiles and aluminum composite panels with anti-slip inlay
- Discreet operating elements of the height adjustment inserted in the lower edge of the desk top
- Footbase with adjustable feet and castors





## T8

Desk tops Softtouch/anti-fingerprint/heat reflection,  
Moulded oak or walnut or lacquered ■ White or ■ Black trim.

### T8 Exclusive

Desk tops in real wood veneer with solid wood look / hard-wearing surface with UV protection  
trim lacquered in ■ White or ■ Black.



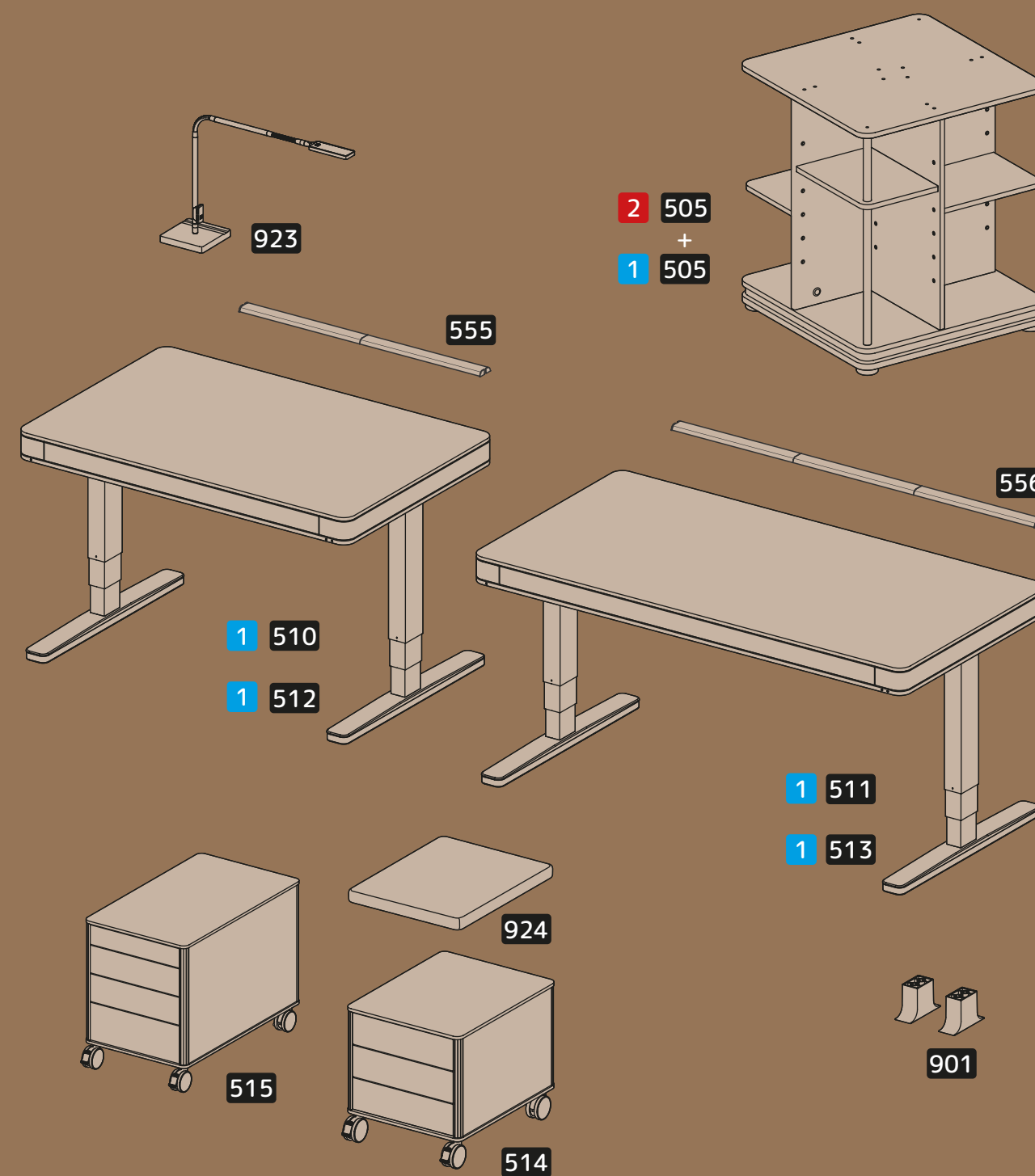
## DETAILS

- Desk top 14 mm with rounded desk corners
- Desk body in sandwich construction, so that it looks clean and appealing even from below  
a circumstance not to be neglected, as the body can be seen from below at standing desk height
- Cable guide profile under the desk top for cable routing over the right-hand desk leg (optional)
- Footbase with adjustable feet and castors



## A TABLE FOR A LIFE TIME

Good design fits into any life situation. Show your taste not only while working at your desk, also while living, cooking and entertaining ...



### Retrofit items from p.49

555 T8 M Cable Duct desk top

556 T8 L Cable Duct desk top

901 Height Adapter

### Storage space from p.56

505 R9 Rotating shelf

514 C6 Container

515 C8 Container

924 Pad

### 510 T8 M 512 T8 M Exclusive

⇄ 115cm | ⇄ 75cm | ⇄ 56-118 cm | ⇄ 51,49 Kg | ⇄ 0,61 m³ | ⇄ 1

### 511 T8 L 513 T8 L Exclusive

⇄ 150cm | ⇄ 75 cm | ⇄ 56-118cm | ⇄ 57,09 Kg | ⇄ 0,739 m³ | ⇄ 1

Desk comes fully assembled



# Additions T6 L



## 553 Drawer

- ↔ 40,7 cm | ↗ 31,3 cm | ⬆ 6 cm | ⬆ 1,1 Kg | 📦 0,012 m³ | 📦 1
- 1-5 drawers per desk also possible in different colors
  - 19 mm Softtouch uni in
    - Softwhite, ■ Softbeige, ■ Softpink, ■ Softblack
  - Alternative 13 mm Softtouch + real wood adaptation 6mm
    - Oak, ■ Walnut
  - Felt inlay in the drawer
  - noise absorbing felt strips in drawer runners



## 554 Back Cover

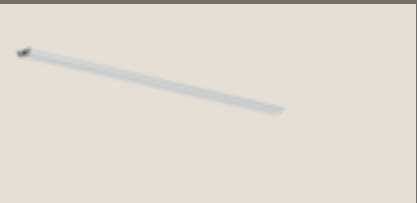
- ↔ 40,7 cm | ↗ 3,5 cm | ⬆ 6 cm | ⬆ 6 Kg | 📦 0,010 m³ | 📦 1
- Cover of sockets when not in use
  - 19 mm Softtouch uni in
    - Softwhite, ■ Softbeige, ■ Softpink, ■ Softblack
  - Alternative 13 mm Softtouch + real wood adaptation 6mm
    - Oak, ■ Walnut
  - Fixing by magnets



## 901 Height Adapter

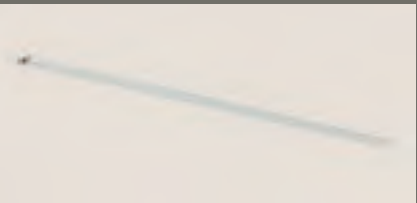
- ⬆ 10 cm | ⬆ 1,25 Kg | 📦 0,003 m³ | 📦 1
- The Height Adapter changes the base height by an additional 10 cm
  - Desk height with Height Adapter 66 -124 cm
  - The Height Adapter is installed between the Footbase and the foot rail
  - Die-cast aluminum, coated in ■ White or ■ Black

# Retrofit items T8



## 555 T8 M Cable Duct Desk Top

- ↔ 74,7 cm | ↗ 4,5 cm | ⬆ 1,8 cm | ⬆ 0,212 Kg | 📦 0,012 m³ | 📦 1
- Aluminum cable guide profile for clipping under the desk top for cable routing over the right desk leg
  - 2 elements



## 556 T8 L Cable Duct Desk Top

- ↔ 111,7 cm | ↗ 4,5 cm | ⬆ 1,8 cm | ⬆ 0,302 Kg | 📦 0,012 m³ | 📦 1
- Aluminum cable guide profile for clipping under the desk top for cable routing over the right desk leg
  - 3 elements



## 901 Height Adapter

- ⬆ 10 cm | ⬆ 1,25 Kg | 📦 0,003 m³ | 📦 1
- The Height Adapter changes the base height by an additional 10 cm
  - Desk height with Height Adapter 66 -124 cm
  - The Height Adapter is installed between the Footbase and the foot rail
  - Die-cast aluminum, coated in ■ White or ■ Black

# LIGHT





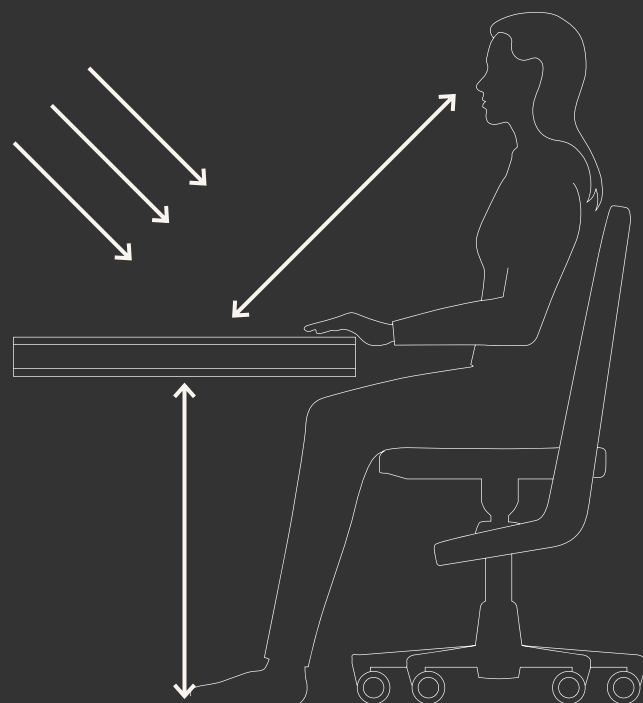
# LIGHT + LAMP

The amount of time we spend at the computer or at our desk has increased significantly in recent decades. This puts particular strain on the human eye.

It is therefore important to create suitable conditions for close-up work in order to minimize the strain on the eyes as much as possible: An optimal distance between the eyes and the work surface by means of an adapted height and homogeneous wide-area illumination of the gripping area at all times of the day.

A bright workplace with daylight and glare-free surfaces are ideal conditions. To prevent the light from being obscured by your own shadow, the light should come from the front or from the left for right-handers and from the right for left-handers.

With artificial light, care must also be taken to ensure homogenous illumination and sufficient brightness. Illuminated in this way, the right light helps to combat fatigue and prevents a reduction in vision.



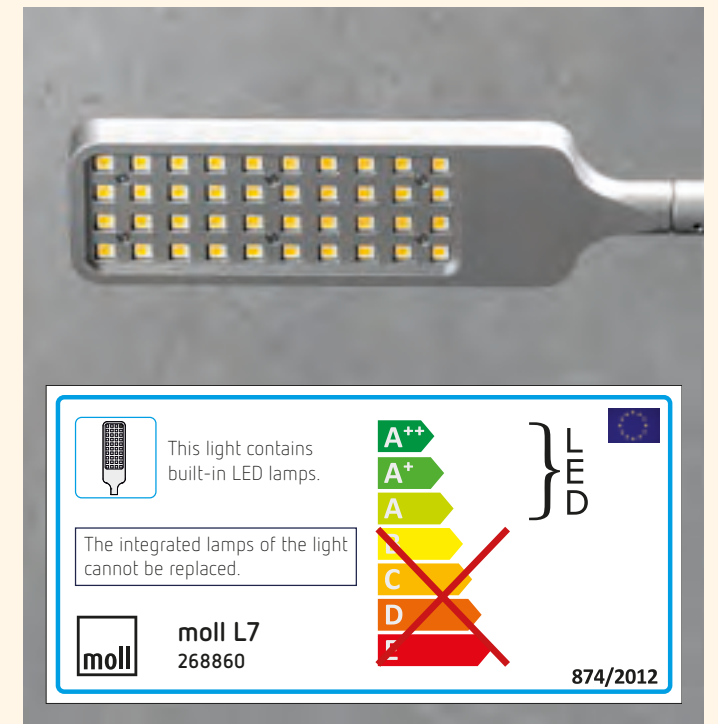


# L7

## The matching light from moll

The L7 desk lamp is fully coordinated with the design of the unique desks. Clear design language and maximum flexibility in the adjustment through two movable goosenecks.

The swiveling lamp arm allows for alignment for both right-handed and left-handed users.



### 923 L7

↔ 62 cm | ❧ - cm | ⚙ 42 cm | ⚖ 3,76 Kg | 📦 0,01 m³ | 🗑 1

- Luminaire head with 40 LEDs of energy efficiency class: G; nominal luminous flux 690 lumens; Nominal power consumption 10 W; color temperature 3500 K; nominal life 25,000 h.
- On/off switch has night light function (256 colors adjustable)
- Stepless dimming from 100% to 5% without flickering
- Heavy, sturdy base 16.5 x 16.5 cm with pen holder recesses
- Two USB ports serve as charging stations
- 2 years quality warranty



# STORAGE SPACE



DECOR:	Softwhite /-black
DIMENSIONS:	42,5 x 54 cm
HEIGHT:	44,6 cm
MATCHING:	T1*   T2*   T6   T8   T8 Ex.
CHARACTERISTICS:	3 drawers optional pad
DELIVERY:	fully assembled
PAGE:	58



C6
Softwhite /-black
42,5 x 54 cm
44,6 cm
T1*   T2*   T6   T8   T8 Ex.
3 drawers
optional pad
fully assembled
58



C8
Softwhite /-black
42,5 x 72 cm
56 cm
T1*   T2*   T6   T8   T8 Ex.
4 drawers
shelf compartment
fully assembled
62



R9
Softwhite /-black /-grey
56 x 56 cm
67 / 125 cm
T1   T2   T6   T8   T8 Ex.
variable compartment heights
rotating
disassembled
64

\* only for desks in decor Softwhite



### Mobile container with three drawers

C6 ⇄ 42,5 cm | 54 cm | 44,6 cm |

3 drawers with self-closing mechanism, loadable up to 2.5 kg

Body	Softwhite	Softblack		
Corner profiles	White	Silver	Black	
Front	Softwhite	Softbeige	Softpink	Softblack
	Oak	Walnut		

### Option

Seat Pad

### Design Castors

Front castors lockable

Color according to body color



Container comes delivered fully assembled

# C6

## Mobile storage with seat option

Small and elegant, the C6 sits pleasantly next to or under a T6 or T8 and can also easily take center stage by adding the seat cushion.

### 514 C6

⇄ 42,5 cm | 54 cm | 44,6 cm | 23,5 Kg | 0,139 m³ | 1

- Body with rounded corners and Softtouch/anti-fingerprint surface
- 3 drawers of equal size with push-to-open function
- Drawers with felt insert and divider 2 x DIN A4
- Corner profiles made of aluminum
- Loadable up to 100 kg





# PAD

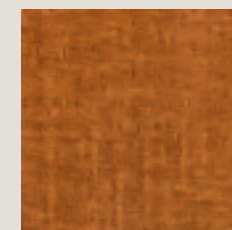
## The seat cushion for the C6

Simply placed on the mobile container, the C6 becomes a movable and versatile seat. Harmonious with cover fabric Spice in 8 matching colors.

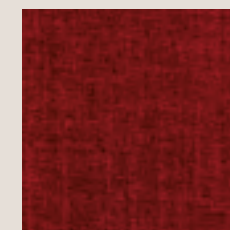
## SPICE



CAPPUCCINO



MANDARINE



RED



PINK



DEEP BLUE



TURQUOISE



GREEN



GREY

## 924 PAD

↔ 44 cm | ↗ 54 cm | ↕ 6 cm | ⚖ 3,48 Kg | 📦 0,021 m³ | 🪑 1

- Seat cushion fixed with anti-slip strips and Velcro dots
- High quality cover fabric „Spice“ in 8 color options



### Mobile container with four drawers

C8      ⇄ 42,5 cm | ⇄ 72 cm | ⇄ 56 cm

4 drawers with self-closing mechanism

top drawer loadable up to 1,0 kg, others loadable up to 2.5 kg

Body	■ Softwhite	■ Softblack		
Corner profiles	■ White	■ Silver	■ Black	
Front	■ Softwhite	■ Softbeige	■ Softpink	■ Softblack
	■ Oak	■ Walnut		

### Rear shelf

with 1 shelf, loadable up to 2,0 kg

### Design Castors

Front castors lockable

Color according to body color



Container comes delivered fully assembled

# C8

## Mobile storage with shelf

Unmissable and yet pleasantly unagitated, the C8 is a coherent extension to the T6 or T8 and still surprises with a shelf compartment on its back.

### 515 C8

⇄ 42,5 cm | ⇄ 72 cm | ⇄ 56 cm | ⬆ 31,5 Kg | 📦 0,245 m³ | 🗑 1

- Body with rounded corners and Softtouch/anti-fingerprint surface
- 4 drawers with push-to-open function, including 1 drawer with compartments and a secret box
- Drawers with felt insert and divider 2 x DIN A4
- Rear shelf can be positioned at 3 heights
- Corner profiles made of aluminum
- Loadable up to 100 kg





# R9

## Rotating shelf and amazing storage space

With as little as 0.3 square meters of surface area, the rotating shelf tower offers countless storage space and filing options. Keep everything organized with just one turn.

### Rotating shelf in two heights

R9      ⇄ 56 cm | ⇄ 56 cm | ⇄ 67/125 cm  
 ⇄ 67 cm      Basic shelf consisting of Rotating Plate + Module 1  
 ⇄ 125 cm      Basic shelf + extension with Module 2  
 Body:      ■ Softwhite    ■ Softgrey    ■ Softblack

### Options

Retrofit with Module 2  
 Shelf Set with 2 shelves  
 Colour:      ■ Softwhite    ■ Softgrey    ■ Softblack

### Rotating Plate

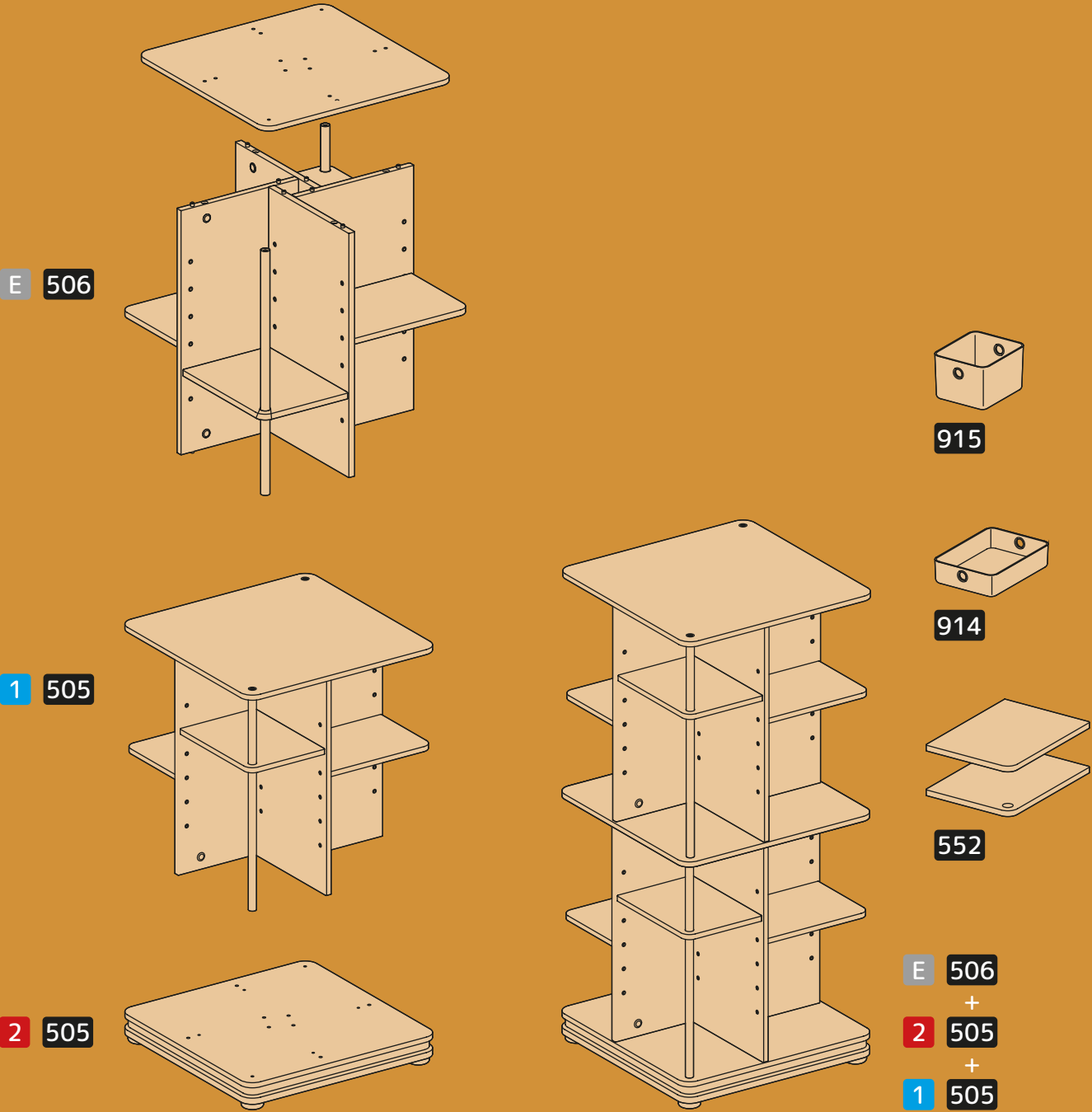
with rotary bearing  
 Soft grip protection  
 5 adjustable feet



Shelf comes supplied in individual components with assembly tools

## DETAILS

- Shelves with rounded corners and Softtouch/anti-fingerprint surface.
- Integrated aluminum handle bars make turning easier, in addition to securing the shelf contents and are a distinctive design feature
- Rotating plate with low-noise rotating bearing allows comfortable access to each shelf in the rack
- Adjustable feet to compensate for uneven floors in black
- Soft grip protection made of sponge rubber in black
- Accessories such as shelves or the stackable baskets increase the benefit greatly



**505 R9 Rotating Plate**

⇄ 56 cm | ⇄ 56 cm | ⬆ 4,48 Kg | 📦 0,041 m³ | 📦 1

**505 R9 Module 1**

⇄ 56 cm | ⇄ 56 cm | ⇄ 67 cm | ⬆ 16,423 Kg | 📦 0,041 m³ | 📦 1

R9 consists of 2 modules: **1** Rotating Plate + **2** Module 1  
optional Additions and Accessories please order separately

**Additions**

**506 R9 Module 2**

⇄ 56 cm | ⇄ 56 cm | ⇄ +58 cm | ⬆ 16,31 Kg | 📦 0,041 m³ | 📦 1

**552 R9 Shelf Set**

⇄ 22 cm | ⇄ 30 cm | ⬆ 1,746 Kg | 📦 0,004 m³ | 📦 1

**Accessories** from p.12

**914** Baskets SQ 70

**915** Baskets SQ 130







# DESK + CHAIR

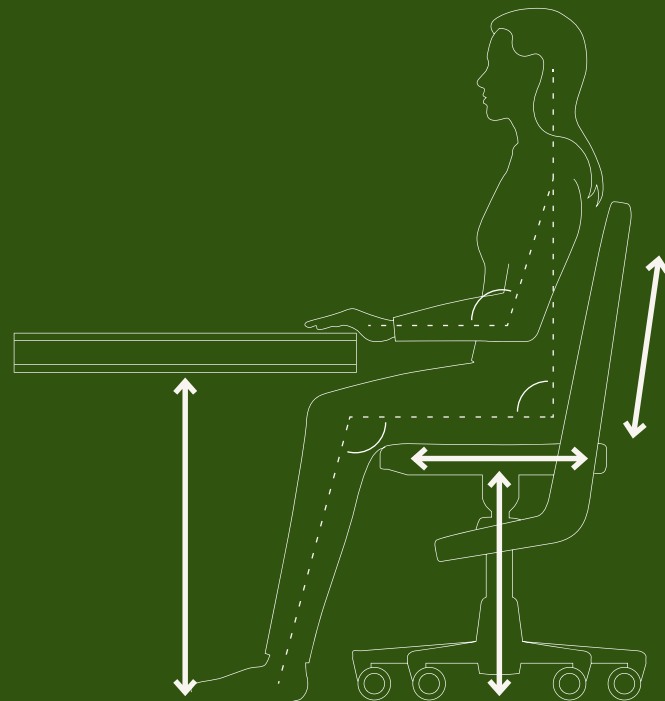
Healthy sitting is not an art - all you need to do is to follow a few basic rules when sitting and when adjusting the desk and chair:

Select the seat height so that the feet rest on the floor with the entire bottom of the feet. The lower legs are vertical to the floor, the upper legs horizontal. The backrest adapts to the back and supports the lumbar region.

At optimum seat depth, the thigh is not in contact with the front edge of the seat. The seat of the swivel chair should be dynamically positioned, tilted forward by approx. 2°.

Posture experts recommend switching frequently between sitting and standing postures. This has a positive effect on concentration and performance. When sitting or standing, always choose a desk height that reaches the elbow position so that the forearms are relaxed on the desk top.

These important basic rules prevent a lack of concentration, cramps, circulatory problems and postural problems at the workplace.





# SEATS



SEAT:	Molded wood shell			
	44,3 x 50,5 cm			
	41 -53 cm			
	fixed			
	4-way seat dynamics			
DIMENSIONS:	gas spring			
	2 colored seat cushion			
SEAT HEIGHT:				
SEAT DEPTH:				
CHARACTERISTICS:	5 way, aluminum coated			
	PAGE:			
OPTIONS:				
FOOTBASE:				



# S3

Molded wood shell

44,3 x 50,5 cm

41 -53 cm

fixed

4-way seat dynamics

gas spring

2 colored seat cushion

5 way, aluminum coated

74



SEAT:	Upholstery with cover fabric	
	74 x 70 cm	
	33-55 cm	
	adjustable	
	breathable	
DIMENSIONS:	snap-in fittings	
	seat/back cushion	
CHARACTERISTICS:	6-way, plastic	
	76	



### Swivel chair with molded wood shell

S3 ⇄ 44,3 cm | ⇄ 50,5 cm

Color: ■ White ■ Black

Seat height: ⇄ 41-53 cm for the body height 140 - 180 cm

Seat depth: ⇄ 44 (fixed)

Backrest height: ⇄ 82,5 - 94,5 cm

### 3D seat mechanism

Rocking function integrated up to 12° in all directions

### Options

Felt pad

Glides

### Footbase

5-arm base

braked design double castors  
for hard and soft floors



Chair comes partially assembled in 1 pack / 3 components

# S3

## The timeless classic in a new interpretation

Puristically designed, focused on the essentials: The distinctly clear beech wood shell in combination with the lightly strained base cross stand for timelessness.

### 516 S3

⇄ 44,3 cm | ⇄ 50,5 cm | ⇄ 93,8 cm | ⇄ 7,92 Kg | ⇄ 0,22 m³ | ⇄ 1

- Molded beech wood shell lacquered
- gas spring combined with 3D seat mechanism, seat height by means of lever made of round steel
- loadable up to 90 kg, GS certified / TÜV tested. Delivery partly assembled

### 919 Set of glides 5 pcs.

⇄ 3,5 cm | ⇄ 0,358 Kg | ⇄ 0,003 m³ | ⇄ 1

### 918 Felt pad in color combination Pink|Blue and Dark grey

⇄ 36,5 cm | ⇄ 28 cm | ⇄ 1 cm | ⇄ 0,284 Kg | ⇄ 0,004 m³ | ⇄ 1





## Swivel chair with mesh upholstery

S6 ⇄ 74 cm | ⇅ 70 cm

Color: ☐ White ☐ Grey ☒ Black

Seat height: ⇄ 33-55 cm for the body height 120 - 195 cm

Seat depth: ⇄ 27-39 cm

Backrest height: ⇄ 70-92 cm

## Options

seat and back cushions (p. 79) freely combinable

Glides

## Footbase

6-arm base

braked design double castors

for hard and soft floors



Chair comes partially assembled in 1 pack / 2 components

# S6

## Discreet or flashy?

From the basic version with mesh in a translucent look to the colorfully combined chair - the S6 presents itself the way you want it to be.

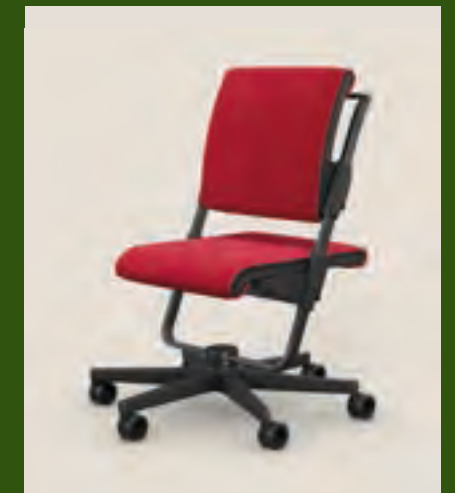
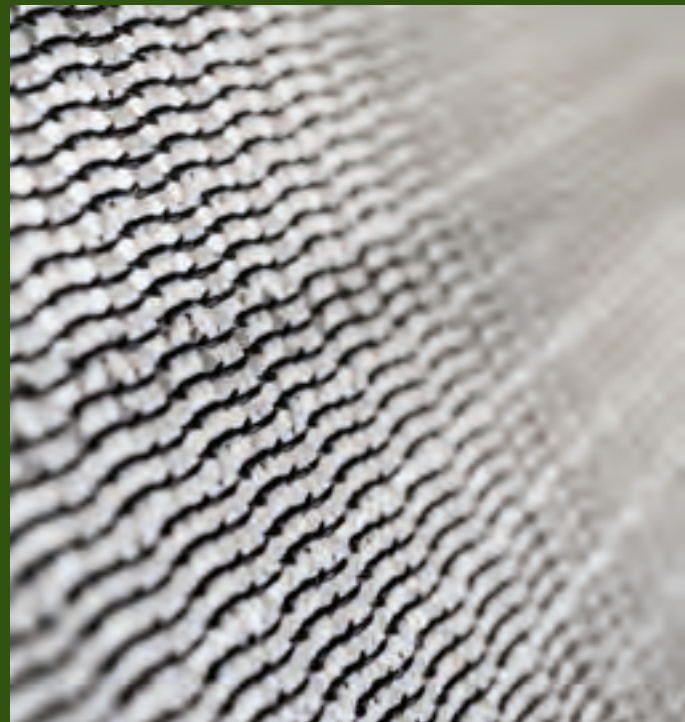
## 517 S6

⇄ 74 cm | ⇅ 70 cm | ⇄ 81,5 cm | ⇅ 12,37 Kg | ⇄ 0,257 m³ | ⇄ 1

- High tech mesh upholstery for dynamic sitting with high breathability
- Seat height, seat depth and backrest height adjustable with intuitive operation
- Optional seat and backrest cushions can be fixed by means of push buttons
- 6-arm base made of fiberglass-reinforced plastic
- Load capacity up to 90 kg, GS certified / TÜV tested.

## 920 Set of glides 6 pcs.

⇄ 3,5 cm | ⇅ 0,258 Kg | ⇄ 0,003 m³ | ⇄ 1



## 519 Seat cushion

↔ 45 cm | ↗ 67 cm | ↕ 2 cm | ⚖ 0,420 Kg | 📦 0,021 m³ | 🪑 1

## 518 Back cushion

↔ 45 cm | ↗ 56 cm | ↕ 2 cm | ⚖ 0,40 Kg | 📦 0,021 m³ | 🪑 1

Please note the care instructions on p. 87 and / or on the label





## Swivel chair with multi-zone seat cushion

S9 ⇄ 65 cm | 65 cm

Base Color: ■ White ■ Black

Seat height in 2 ranges: ⇄ 38 - 47 cm / 49 - 58 cm

Seat depth in 2 ranges: ⇄ 33 - 42 cm / 37 - 45 cm

Backrest height: ⇄ 85 / 96 cm

Upholstery fabric Spice / color seat and back element can be combined individually

Color: ■ Mandarine ■ Cappuccino ■ Red ■ Pink  
■ Deep Blue ■ Turquoise ■ Green ■ Grey



## 2 seat height ranges

the backrest height setting defines the seat height range

## 3D seat mechanism

for dynamic sitting:

6° to the back, 6° to the front, maximum 3° to the side

## Footbase

5-arm base

braked design double castors

for hard and soft floors



Chair comes partially assembled in 2 packs / 3 components

# S9

## Powerful technology in a sleek design

Behind the independent appearance hides a master of versatility and variance. Anyone who chooses S9 commits to its profile.

## 520 + 521 S9

⇄ 65 cm | 65 cm | ⇄ 96,5 cm | 14,62 Kg | 0,278 m³ | 2

- Upholstery with high quality cover fabric „Spice“ in 8 color options can be combined individually
- Seat and backrest package adjustable in 2 heights
- Seat support adjustable in 2 adjustment ranges and simultaneously in 2 weight levels
- Gas spring for precise height adjustment combined with 3D seat mechanism
- Seat depth adjustment via grid
- Inclination of backrest adjustable in 3 steps per handwheel
- 5-arm base made of coated die-cast aluminum
- Loadable up to 100 kg, GS certified / TÜV tested. Chair consists of 2 modules



919 Set of glides 5 pcs.  
✎ 3,5 cm | ⚖ 0,358 Kg | 📦 0,003 m³ | 🗑 1



# ACCESSORIES



## 914 Basket SQ 70    915 Basket SQ 130

Felt boxes with practical handle eyelets.  
Desk utensils can be neatly stored.  
Baskets are stackable with the attached clips.  
Available in the color Grey.

↔ 30 cm | ↗ 22 cm | ⬆ 6,8 cm  
⬆ 0,348 Kg | 📦 0,012 m³ | 🗑 1

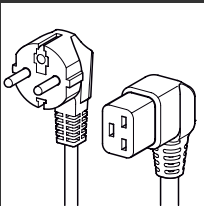
↔ 21 cm | ↗ 18,5 cm | ⬆ 14 cm  
⬆ 0,316 Kg | 📦 0,017 m³ | 🗑 1





# POWER SUPPLY

When ordering products with country-specific electrification, the item no. must be completed by a **power cord or S-type** number! Please refer to the list for the possible types for your region.



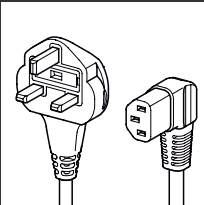
**Type F**  
AT, BA, BG, BY, DE, EE, ES, FI, GR, HR, HU, KR, LT, LU, LV, ME, NL, NO, PT, RO, RS, RU, SE, SI, TR, UA



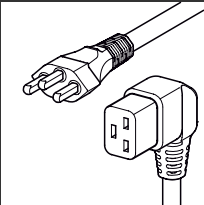
**Type E**  
BE, CZ, DK, FR, PL, SK



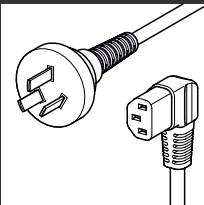
**Universal**  
CN



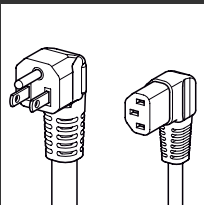
**Type G**  
CY, GB, HK, IM, IE, MT



**Type J**  
CH, LI



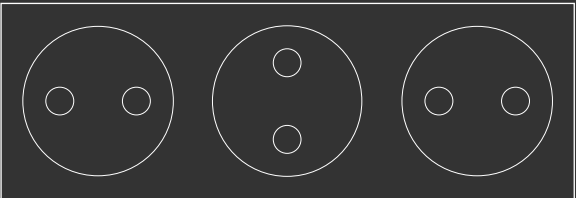
**Type I**  
CN



**Type B**  
US

## T6/T8 SOCKET OUTLET

TYP F, TYP E, TYP G and TYP J: Arrangement of sockets to accommodate different power supply units in the compartment / drawer



# TEXTILES

## SPICE



CAPPUCCINO



MANDARINE



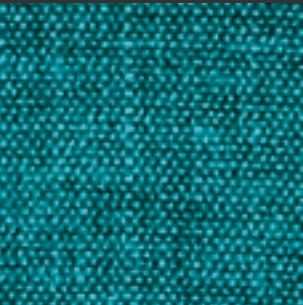
RED



PINK



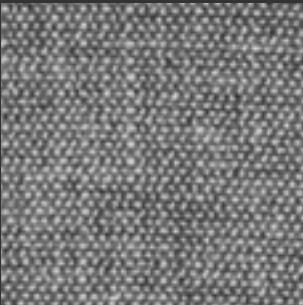
DEEP BLUE



TURQUOISE



GREEN



GREY

## SPICE

Upper: 100% polyester  
Oeko Tex Standard 100: certified  
Abrasion resistance - yarn breakage: >35.000 Martindale  
Pilling: 4-5  
Light fastness: 5  
Rub fastness: wet 4-5, dry 5

## S6 MESH

100% elastomer polyester  
Abrasion resistance: 50000 Martindale  
Light fastness: 5  
Rub fastness wet 5, dry 4

## CLEANING AND CARE

Vacuum regularly. If dirty, wipe with a damp cloth. Please follow the care instructions on the label.





moll Funktionsmöbel GmbH  
Rechbergstraße 7  
D 73344 Gruibingen  
[info@moll.world](mailto:info@moll.world)  
[www.moll.world](http://www.moll.world)

T: +49 (0) 7335 181-180

