




Cullinan  
Made by 





ONE  
OF  
A  
KIND



POSTUREPEDIC  
CULLINAN™



# *Contents*

---

## **ONE OF A KIND**

About Cullinan

Why Cullinan

Factors We Considered

- CoolTouch Pique Woven Fabric
- Pressure Relieving Comfort
- PostureTech Advanced
- Stylish, Durable Foundation

## *About Cullinan*

*A bed designed for those who demand the extraordinary...*

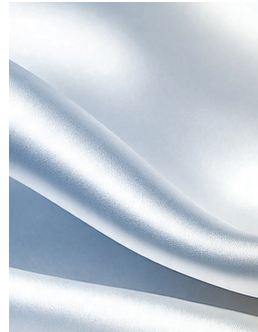
### **The Ultimate Inspiration for Superior Sleep**

Just as the Cullinan Diamond set a new standard in luxury, the **Cullinan** made by Sealy, redefines premium sleep.

### **A Legacy of Luxury & Excellence**

The Cullinan Diamond, the largest and most exquisite diamond ever discovered, inspired us to deliver the most exclusive bed.

Only our most gifted craftsmen are entrusted to shape our **Cullinan**, made by Sealy.



*Sleep should be a masterpiece—  
Cullinan makes it a reality*



## *Why Cullinan?*

### **A Name of Prestige**

The **Cullinan**, made by Sealy, is crafted from the finest materials, with a legacy of excellence. Backed by orthopaedic research, our Posturepedic mattress is impeccably considered to enhance your quality of sleep.

### **A Symbol of Perfection**

**Cullinan**, is adorned with inviting cream hues, luxury leather finishes and warm timber accents embodying the expression of contemporary elegance.

Built to exceed expectations, delivering a sleep experience like no other - one of a kind.

### **A Mark of Innovation**

The **Cullinan** mattress follows the legacy of combining cutting-edge Posturepedic technology with premium materials to set a new benchmark in sleep innovation, with a personalised overlay, offering unique comfort needs.

*The Art of a Perfect Nights Sleep*

## *Personalise Your Comfort, with Our Luxury Overlay -*

*It allows you to sink into a luxurious soft yet supportive overlay - a comfort choice,  
ideal for superior relief to pressure points.*

### **CoolTouch Pique Woven Fabric**

With enhanced cooling effect, perfectly quilted together with **Thermobond wool** and convoluted foam, for luxurious comfort.

**Healthguard** anti-microbial coating treatment for allergen and bacteria reduction.

### **SynerFlex Foam Layer**

Provides a balance of softness and support, adapting to body contours whilst maintaining spinal alignment.

### **Motion Airflow Coil Layer**

**Mini-pockets** to compliment all comfort layers for responsive core support and motion isolation.









## *Our Technology*

*Where comfort meets innovation, offering precision-engineered Posturepedic technology, a sleep system designed to offer luxury, superior comfort, support and durability.*

## *Factors We Considered*

### **Temperature Control**

A luxurious CoolTouch Pique Woven fabric with an enhanced cooling sensation against the skin. Quilted with Thermobond wool to maintain relaxation at a comfortable temperature.

### **Pressure Relief**

Specialised Dual-Phase Foam layer, a ventilated celled foam, with a Motion Airflow Coil layer, responds to pressure relief and motion isolation.

### **Comfort Choice**

Designed to keep your body aligned, with an option of an overlay for those who prefer maximum cushioning and luxurious comfort.

### **Style & Durability**

A reinforced foundation, works with the mattress to absorb and disperse stress for longer-lasting comfort. Styled with extra padded sides on a timber surround, compliments fashionable aesthetic.

# *Premium Materials for Unmatched Comfort*

## **CoolTouch Pique Woven Fabric**

Designed to be breathable, allowing moisture wicking and air circulation to enhance the cooling effect. Together with **Thermobond wool** and convoluted foam fillings, the perfect bed climate is maintained, helping you stay relaxed at a comfortable temperature.





## *Breathable Foam That Moves with You*

### **Luxurious, High-Quality Foams & Fillings**

Dual-Phase Foam layer, a specialized fine-ventilated celled foam, creates the perfect climate whilst delivering a breathable and supportive surface, responding to pressure relief. SynerFlex Foam layer adapts to body contours whilst maintaining spinal alignment.

# *Tailored Support for Every Sleeper*

## **PostureTech Advanced Innerspring System**

An advanced coil-within-a-coil innerspring system, responds to individual body weights, shapes and sleep patterns. Our self-posturizing system reacts to every movement, with a secondary response, that increases in firmness as weight is applied.

## **Duraflex Foam Encased Edge Support**

**Foam edge surround support**, wraps around the spring system, providing increased stability and support, whilst maximizing the usable sleep surface.





## *Built for Durability & Design*

### **Stylish, Durable Foundation**

A solid reinforced foundation helps to support the mattress, extending the mattress durability and comfort. A non-slip gripper fabric keeps your sheets and mattress in place. Styled with extra padded sides on a timber surround, compliments fashionable aesthetic.

Available in 2 different heights.



0800 016 335 (Toll Free)

[sealyinfo@bravobrand.com](mailto:sealyinfo@bravobrand.com)

20 Main Reef Rd, Longdale, Industria,  
Johannesburg, 2042

[www.sealy.co.za](http://www.sealy.co.za)