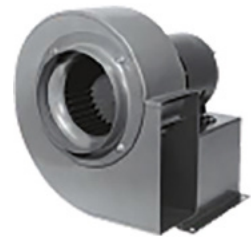


SOURCE LEADER IN ELEVATED AIR MOVEMENT



DIRECT DRIVE FANS



PRESSURE BLOWERS



INDUSTRIAL FANS



DIRECT DRIVE EXHAUST FANS



BACKWARD INCLINED BELT DRIVE BLOWERS



BELT DRIVE PROPELLER FANS



POWERFOIL FANS



PLUG-PAK FANS



IN-LINE CENTRIFUGAL FANS



FORWARD CURVE BELT DRIVE FANS



PLENUM FANS

# PEERLESS BLOWERS



PEERLESS  
BLOWERS

Peerless Blowers  
Madison Manufacturing Company, Inc.

172 South Andrews Ave.  
PO Box 187  
Hot Springs, NC 28743-0187 • USA

828-622-7500 • 1-800-613-4766

Fax: 828-622-3309

[peerlessblowers.com](http://peerlessblowers.com)

[salesteam@peerlessblowers.com](mailto:salesteam@peerlessblowers.com)

ELEVATED AIR MOVEMENT



# PEERLESS BLOWERS

Peerless Blowers, established in 1893, has been a name synonymous with manufacturing high quality, reliable, and efficient blowers and fans that provide exceptional performance, cost-efficient operations, and long-term service to its customers.

Peerless Blowers, offers a full range of standard heavy-duty fans, blowers, and propeller fans for a wide variety of commercial and industrial applications. With an experienced Engineering Team, Peerless Blowers, can also assist customers in developing custom designed solutions to meet their exact ventilation requirements.

Peerless Blowers specializes in industrial blowers and fans for:  
[Aviation](#) • [Automotive](#) • [Car Wash](#) • [Chemical Dust Collection](#) • [Food Process](#) • [Foundries](#) • [Graphics/Printing](#) • [HVAC](#) • [Maintenance](#) • [Manufacturing](#) • [Mining](#) • [Nuclear](#) • [Paint](#) • [Paper/Pulp](#) • [Petroleum](#) • [Plastics](#) • [Rail](#) • [Source Capture](#) • [Steel](#) • [Textile](#) • [Wood](#) • [And Many More](#)

Built with all-welded heavy gauge steel, aluminum, or stainless steel, these blowers and fans are built in various AMCA standard drive arrangements. They are also tested and rated to meet recognized industry codes and standards.

**REGARDLESS OF YOUR AIRFLOW REQUIREMENTS, PEERLESS BLOWERS IS YOUR LEADER IN ELEVATED AIR MOVEMENT.**

For Assistance: 1-800-613-4766  
Email: [salesteam@peerlessblowers.com](mailto:salesteam@peerlessblowers.com)

## ULTRAFAN PAK-2002

This is a forward curve belt utility fan. Built using steel, these units are self-contained and have all-welded construction.



Wheel Sizes: 8"-24"  
CFM Range: 238-20,056  
Static Pressure: Up to 4.5" WG

## ULTRAFAN PAK-2000

This is a non-overloading belt drive utility fan. Built using steel, these units are self-contained and have all-welded construction.



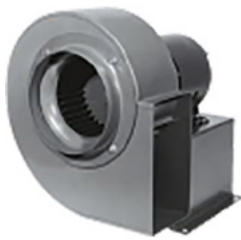
Backward Inclined Wheel Sizes: 10.5"-24.5"  
Airfoil Wheel Sizes: 27"-36.5"  
CFM Range: 508-30,640  
Static Pressure: Up to 5" WG (Class I)

## IN-LINE CENTRIFAN

Product has all-welded construction and is available in either belt or direct drive.



Belt Drive Wheel Sizes: 10.5"-49"  
Direct Drive Wheel Sizes: 10.5"-36.5"  
CFM Range: 435-67,407  
Static Pressure: Up to 8.5" WG



## DIRECT DRIVE BLOWERS Forward Curve Wheels

These quality built blowers provide effective, efficient performance to meet your service requirements.

Wheel Sizes: 5"-12.5"  
CFM Range: 100-3,350  
Static Pressure: Up to 2.75" WG



## POWERFOIL BLOWERS

These heavy-duty blowers with airfoil wheels are available in most arrangements in either SWSI or DWDI – Class I, II and III.

Wheel Sizes: 27.5"-49"  
CFM Range SWSI: 3,352-74,520  
CFM Range DWDI: 6,032-134,190  
Static Pressure: Up to 14" WG for both SWSI and DWDI



## INDUSTRIAL FANS

These belt drive fans are heavy-duty, all-welded units available in 3 wheel configurations for material or air handling.

Wheel Sizes: 12.12"-57.5"  
CFM Range: 277-39,277  
Static Pressure: Up to 20" WG (Material Handling Wheels)  
Up to 16" WG (Air Handling Wheels)



## DIRECT DRIVE BLOWERS Backward/Inclined Wheels

These blowers offer solid performance and provide long-term service. These units are available with partial or full width wheels.

Wheel Sizes: 10.5"-24.5"  
CFM Range: 457-17,290  
Static Pressure: Up to 14" WG



## PRESSURE BLOWERS Belt Drive

Blower Model PWB comes standard with cast aluminum wheels.

Wheel Sizes: 8"-14"  
CFM Range: 60-2,322  
Static Pressure: Up to 12" WG



## PROPELLER FANS Belt Drive

Standard features on Model PVI include solid steel fan blades and panels.

Propeller Sizes: 24"-60"  
CFM Range: 5,050-63,445  
Static Pressure: Up to 1" WG



## PLUG-PAK FANS

These fan units have all-welded construction and are designed to operate in temperatures up to 300°F.

Wheel Sizes: 12.25"-49"  
CFM Range: 987-53,280  
Static Pressure: Up to 8" WG



## PRESSURE BLOWERS-Direct Drive

Blower Models PW and KE come standard with cast aluminum wheels.

Model PW and KE Wheel Sizes: 8"-14"  
Model PW CFM Range: 70-2,100  
Model KE CFM Range: 93-3,393  
Static Pressure:  
Model PW: Up to 12" WG  
Model KE: Up to 2.25" WG



## PROPELLER FANS Direct Drive

Models PVL, PVM and PVH come standard with aluminum fan blades and steel panels.

Propeller Sizes: 8"-20"  
CFM Range: 400-6,200  
Static Pressure: Up to .75" WG



## POWERFIXED -2000 BLOWERS

These solid, heavy-duty blowers with backward inclined wheels are offered in most arrangements in either SWSI or DWDI – Class I, II and III.

Wheel Sizes SWSI: 12.25"-24.5" and 27"-49"  
CFM Range Wheel Sizes (12.25"-24.5"): 686-13,140  
CFM Range Wheel Sizes (27"-49"): 2,514-74,520  
Wheel Sizes DWDI: 12.25"-24.5"  
CFM Range DWDI: 1,548-34,877  
Static Pressure:  
SWSI Only (27"-49"): Up to 20" WG  
SWSI/DWDI Only (12.25"-24.5"): Up to 13.5" WG



## PLENUM FANS

Direct drive plenum fan specifically designed for a variety of HVAC style applications.

Wheel Sizes: 400mm - 630mm  
CFM Range: 1,000 - 17,400  
Static Pressure: Up to 11.0" WG  
AC & PM Motors available