

POWERLUX

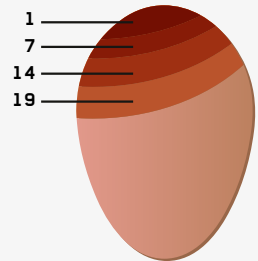
Function:

The Powerlux egg candler can be used to check if your hatching eggs are fertilized, usually this is possible after 4-5 days. When the eggs are fertilized, you can follow the development of the embryo by using this high power LED egg candler. In addition you can check if the eggs have any small cracks.

How to use:

- 1) Collect the eggs that you would like to check.
- 2) Choose, depending on the size of the eggs, the right placement (rubber nozzle) and place it on the egg candler. The rubber placement ensures that all the light is directed to the egg, in this way there is hardly any light dispersion.
- 3) Put the plug of the egg candler into the socket and take an egg in your hand with the blunt side up and with the tip pointing downwards.
- 4) Place the egg candler on the blunt side of the egg and turn on the lamp by pressing the switch.
- 5) Check the egg. Often it is easier to view eggs in a dark room. Sometimes it may also help to turn the egg a little, especially at the beginning of the incubation period when the blood vessels are not always clearly visible.
- 6) **Use the egg candler in a dry place!**

In addition to checking the egg for any cracks or to follow the development of the embryo, you can also check the size of the air chamber. This is important to check if the humidity level in the incubator is correct. In the next illustration you can see how the development of the air chamber normally should evolve during the incubation process.



Normal development of the air chamber in correspondence with the number of incubation days.

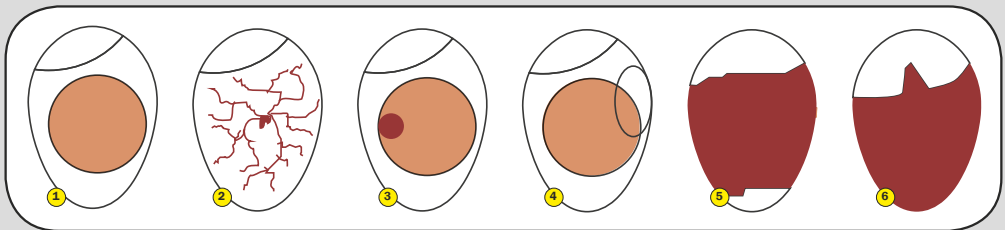


OLBA B.V.
Pasteurweg 3
7741 LB Coevorden
THE NETHERLANDS

Delivered with two rubber placements.

Technical information:
 Supply by adapter delivered:
 4.5V continuous- 220V/50Hz

Possible results:



- 1) Clear when viewed – unfertilized egg (or early death) when viewed at 8 days of hatching.
- 2) Fertilized egg with red blood vessels – viewed at 8 days of hatching.
- 3) Red or black spot – early death when viewed at 8 days of hatching.
- 4) Embryo with red blood ‘ring’ – early death when viewed at 8 days of hatching.
- 5) Dark contour with badly visible details – late death (10-16 days).
- 6) Living embryo with bulge in the air chamber – will hatch in 24-48 hours.