

PERFORMANCE

Processor

AMD Ryzen™ 7 8845HS (8C / 16T, 3.8 / 5.1GHz, 8MB L2 / 16MB L3)

Graphics

NVIDIA® GeForce RTX™ 4050 6GB GDDR6

Chipset

AMD SoC Platform

Memory

32GB Soldered LPDDR5x-6400

Memory Slots

Memory soldered to systemboard, no slots, dual-channel

Max Memory

32GB soldered memory, not upgradable

Storage

1TB SSD M.2 2280 PCIe® 4.0x4 NVMe®

Storage Support^[1]

Up to two drives, 1x M.2 SSD + 1x open M.2 SSD
• M.2 SSD up to 1TB each

Card Reader

None

Optical

None

Audio Chip

High Definition (HD) Audio

Speakers

5Wx2, JBL® Brand

Camera

Removable 5.0MP + IR

Microphone

2x, Array

Power Supply

300W 89% Adapter

DESIGN

Display^[2]

27" QHD (2560x1440) IPS 350nits Anti-glare, 95% DCI-P3, 4-side Borderless

Touchscreen

Non-touch

Keyboard

Euterpe Wireless Keyboard, Silver, Swiss

Mouse

Wireless Euterpe Mouse, Silver

Expansion Slots

Three M.2 slots (one for WLAN, two for SSD)

Case Color

Cloud Grey

System Lighting

Default

Cooler

Default

Stand

AIO Stand

Pen

No support

Form Factor

AIO (27 inches)

Dimensions (WxDxH)^[3]

614.8 x 242 x 513.35 mm (24.2 x 9.52 x 20.21 inches)

Weight^[4]

Around 17.08 kg (37.65 lbs)

CONNECTIVITY

Ethernet

Integrated 100/1000M

WLAN + Bluetooth®

Wi-Fi® 6E, 11ax 2x2 + BT5.1

Top Ports

1x camera connector

Rear Ports

- 1x USB-C® 3.2 Gen 2
- 1x USB 3.2 Gen 2 (Always On)
- 2x USB 2.0
- 1x DP out 1.4
- 1x Ethernet (RJ-45)
- 1x power connector

Left Ports

- 1x USB-C® 3.2 Gen 2 (support data transfer, DP 1.4, and up to 95w PD)
- 1x USB 3.2 Gen 2
- 1x headphone / microphone combo jack (3.5mm)

SECURITY & PRIVACY

Security Chip

Firmware TPM 2.0 integrated in SoC

SERVICE

Base Warranty

2-year, Courier or Carry-in

Included Upgrade

CO2 Offset 1 ton (2nd Generation Carbon Offset Projects), 1Y Premium Care from 2Y Courier/Carry In

CERTIFICATIONS

Green Certifications

- ENERGY STAR® 8.0
- ErP Lot 3 and Lot 7
- GREENGUARD®
- RoHS compliant

Other Certifications

TÜV Rheinland® Low Blue Light (Hardware Solution)

SOFTWARE

Operating System

Windows® 11 Home, Swiss (EN/FR/DE/IT)

Bundled Software

None

ACCESSORIES

Bundled Accessories

None

MODEL

TopSeller : No **Announce Date** : 2024-03-18

EAN / UPC / JAN : 198153547739 **End of Support** : 2029-09-30

Product image is a sample, it may not match the real color of this model

Note:

[1] The max capacity of each disk type is based on the test results with current Lenovo storage offerings.

[2] IPS (in-plane switching) technology may refer to IPS,.....

· Lenovo reserves the right to change specifications without notice.

To see more note information, please link to

<https://psref.lenovo.com/Detail/2349?M=FOHK002KMZ>

Premium Care - Advanced Support from Real People. Real Fast.



REAL PERSON

Choose how you want to reach us - through the phone, chat or email - our expert technicians will take care of you.



REAL FAST

Highly trained technicians will provide you real-time solutions, whatever the issue, on your first contact. If needed, our team will schedule an onsite visit for the next business day.



HASSLE FREE

'Getting started' and 'how-to' assistance for hardware and software. Easy solutions that are simple to reach - that's how Premium Care delivers you the ideal support experience.



PC HEALTH CHECK

Free annual PC Health Check that allows our experts to spot issues before you do so they can resolve them quickly and help you avoid PC problems.

Accidental Damage Protection - Protection of your PC from the unexpected.

Experience shows that a significant portion of devices may be damaged (and not covered under warranty) in the first three years. Lenovo's Accidental Damage Protection service covers accidents beyond the system warranty such as drops, spills, bumps and even electrical surges. Make sure your new device has maximum protection, avoid unplanned costs and get peace of mind.

Base Warranty – Included with the systems you purchase, default 1- or 3-year coverage window.

Warranty Extensions & Upgrades – Service and protection that's right for your circumstances.

- Pick Up & Return Courier
- Onsite Support
- Technician Installed Customer
- Replaceable Unit Service
- International Warranty Upgrade

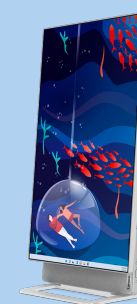
Lenovo may not offer the products, services or features discussed in this document in all regions. Lenovo may withdraw an offering at any time. Consult your local representative for information on offerings available in your area. Lenovo reserves the right to change specifications or other product information without notice. Lenovo is not responsible for photographic or typographical errors. Lenovo provides this publication "as is" without warranty of any kind, either express or implied, including the implied warranties of merchantability or fitness for a particular purpose.



AMD



AMD



AMD

Lenovo

PSREF
Product Specifications
Reference