

blue

CLASSY



LAVAZZA

TORINO,  
ITALIA, 1895.



# CLASSY



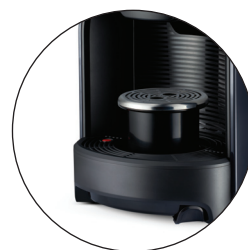
### Touch Interface

4 different coffee selections, automatic and programmable.



### Interactive display

Designed for a new, easy and intuitive communication.



### Small/Large Cup Rack

Adjustable to two heights for classic espresso or long espresso.



### Large Used Capsule Collection Tray

Easy to remove and to clean, it can hold up to 15 used capsules. The display signals when it needs to be emptied.

## PREPARATION

|                |                     |                   |           |
|----------------|---------------------|-------------------|-----------|
| Espresso 30 cc | Long Espresso 45 cc | Long coffee 90 cc | Free dose |
|----------------|---------------------|-------------------|-----------|

| TECHNICAL FEATURES  |         |   |                   |
|---|---------|---|-------------------|
| Works with Lavazza Blue capsules                                | •       | Empty water tank warning                          | •                 |
| Semi - automatic ejection of used capsules in used capsule tray | •       | Full used capsule tray warning                    | •                 |
| Machine start-up time   | 20 sec. | Brita® filter predisposition                      | •                 |
| Used capsules container capacity                                | 15      | Voltage   | 220-240V- 50-60Hz |
| Water tank capacity   | 1.8 l   | Dimensions (l x h x w)                            | 20x35x41 cm       |
| Fresh Milk Module   |         | Nominal power                                     | 1455 W            |
| Low-energy Bluetooth Technology                                 | •       | Machine body material                             | ABS               |
| Use of Lavazza Blue capsules detector                           | •       | Weight  | 5.6 Kg            |
| Cup rack adjustable to 2 heights                                | •       | Cable's length                                    | 0.8 m             |
| Display of number of brewed coffees                             | •       | Programmable stand-by after 30 sec.               | •                 |
| Used capsule tray absence warning                               | •       | Programmable Eco-mode energy saving after 10 sec. | •                 |



[www.lavazza.com](http://www.lavazza.com)

blue