

## PERFORMANCE

### Processor

Intel® Core™ i7-1360P, 12C (4P + 8E) / 16T, P-core 2.2 / 5.0GHz, E-core 1.6 / 3.7GHz, 18MB

### Graphics

Integrated Intel Iris® Xe Graphics

### Chipset

Intel SoC Platform

### Memory

16GB Soldered LPDDR5-5200

### Memory Slots

Memory soldered to systemboard, no slots, dual-channel

### Max Memory

16GB soldered memory, not upgradable

### Storage

1TB SSD M.2 2280 PCIe® 4.0x4 NVMe®

### Storage Support<sup>(1)</sup>

One drive, up to 1TB M.2 2280 SSD

### Storage Slot

One M.2 2280 PCIe 4.0 x4 slot

### Card Reader

None

### Optical

None

### Audio Chip

High Definition (HD) Audio, Realtek® ALC3306 codec

### Speakers

4 stereo speakers, 3W x2 (woofers on the side), 2W x2 (front-facing tweeters on hinge bar), optimized with Dolby® Atmos®, Smart Amplifier (AMP), audio by Bowers & Wilkins

### Camera

FHD 1080p + IR with Privacy Shutter, ToF Sensor

### Microphone

2x, Array

### Battery<sup>(2)</sup>

Integrated 75Wh

### Power Adapter

65W USB-C® (3-pin)

## DESIGN

### Display

14" 2.8K (2880x1800) OLED 400nits Glossy, 100% DCI-P3, 90Hz, Eyesafe®, Dolby Vision™, DisplayHDR™ 500, Glass, Touch

### Touchscreen

10-point Multi-touch

- Lenovo reserves the right to change specifications or other product information without notice.
- Product image on this page is a sample, it may not match the real color of this model
- Battery life is an estimated maximum. Actual battery life may vary based on many factors, including screen brightness, active applications, features, power management settings, battery age and conditioning, and other customer preferences

### Keyboard

Backlit, Swiss

### Case Color

Storm Grey

### Surface Treatment

Aluminium CNC (Top), Aluminium Stamping (Bottom)

### Case Material

Aluminium (Top), Aluminium (Bottom)

### Pen

Lenovo® Precision Pen 2

### Dimensions (WxDxH)<sup>(3)</sup>

318 x 230 x 15.25 mm (12.52 x 9.06 x 0.6 inches)

### Weight<sup>(4)</sup>

Starting at 1.4 kg (3.09 lbs)

## SOFTWARE

### Operating System

Windows® 11 Home, Swiss (EN/FR/DE/IT)

### Bundled Software

Office Trial

## CONNECTIVITY

### Ethernet

No Onboard Ethernet

### WLAN + Bluetooth<sup>(5)(6)</sup>

Wi-Fi® 6E, 11ax 2x2 + BT5.1

### WWAN

None

### NFC

None

### Standard Ports

- 1x USB 3.2 Gen 2
- 1x USB-C 3.2 Gen 2 (support data transfer, Power Delivery 3.0 and DisplayPort™ 1.4)
- 2x Thunderbolt™ 4 / USB4® 40Gbps (support data transfer, Power Delivery 3.0 and DisplayPort 1.4)
- 1x Headphone / microphone combo jack (3.5mm)

### Monitor Cable

1x USB-C 3-in-1 Hub

## SECURITY & PRIVACY

### Security Chip

Firmware TPM 2.0

### Fingerprint Reader

Touch Style, in Keyboard Key

### Other Security

- Camera privacy shutter
- IR camera for Windows® Hello

## MANAGEABILITY

## SERVICE

### Base Warranty

2-year, Courier or Carry-in

### Included Upgrade

<= 3 Months Premium Care, CO2 Offset 1 ton

## ACCESSORIES

### Bundled Accessories

Lenovo® Yoga® 14-inch Sleeve

## CERTIFICATIONS

### Green Certifications<sup>(7)</sup>

- ENERGY STAR® 8.0
  - EPEAT™ Gold Registered
  - ErP Lot 6
  - ErP Lot 26
  - RoHS compliant
- ### Other Certifications
- Intel® Evo™ Platform
  - Eyesafe® Certified 2.0
  - TÜV Rheinland® Low Blue Light (Hardware Solution)

### Mil-Spec Test

MIL-STD-810H military test passed

## MODEL

TopSeller	: Yes	Announce Date	: 2022-12-14
EAN / UPC / JAN	: 196803807899	End of Support	: 2029-02-02



To see more note information, please link to [https://psref.lenovo.com/Detail/Yoga\\_9\\_14IRP8?M=83B1002KMZ](https://psref.lenovo.com/Detail/Yoga_9_14IRP8?M=83B1002KMZ).

## Premium Care - Advanced Support from Real People. Real Fast.



### REAL PERSON

Choose how you want to reach us - through the phone, chat or email - our expert technicians will take care of you.



### REAL FAST

Highly trained technicians will provide you real-time solutions, whatever the issue, on your first contact. If needed, our team will schedule an onsite visit for the next business day.



### HASSLE FREE

'Getting started' and 'how-to' assistance for hardware and software. Easy solutions that are simple to reach - that's how Premium Care delivers you the ideal support experience.



### PC HEALTH CHECK

Free annual PC Health Check that allows our experts to spot issues before you do so they can resolve them quickly and help you avoid PC problems.

## Accidental Damage Protection - Protection of your PC from the unexpected.

Experience shows that a significant portion of devices may be damaged (and not covered under warranty) in the first three years. Lenovo's Accidental Damage Protection service covers accidents beyond the system warranty such as drops, spills, bumps and even electrical surges. Make sure your new device has maximum protection, avoid unplanned costs and get peace of mind.

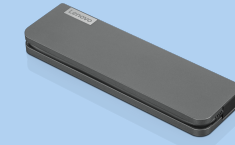
## Base Warranty – Included with the systems you purchase, default 1- or 3-year coverage window.

## Warranty Extensions & Upgrades – Service and protection that's right for your circumstances.

- Pick Up & Return Courier
- Onsite Support
- Technician Installed Customer
- Replaceable Unit Service
- International Warranty Upgrade

Lenovo may not offer the products, services or features discussed in this document in all regions. Lenovo may withdraw an offering at any time. Consult your local representative for information on offerings available in your area. Lenovo reserves the right to change specifications or other product information without notice. Lenovo is not responsible for photographic or typographical errors. Lenovo provides this publication "as is" without warranty of any kind, either express or implied, including the implied warranties of merchantability or fitness for a particular purpose.

## Recommended Accessories



### Lenovo USB-C Mini Dock\_US

40AU0065US

Expand Your Potential with An Universal Mini Dock; Lenovo understands that modern business depends on a wide variety of PC's and even brands to meet their business needs. To make this easier Lenovo USB-C Mini dock is ...



### Lenovo 65W USB-C DC Travel Adapter

40AK0065WW

Power up and stay productive on the road with this DC Travel adapter. Lenovo 65W USB-C DC Travel Adapter is the universal DC adapter, providing 65W power via USB-C for outdoor use.

For a full list of accessories and services, please visit:  
<https://smartfind.Lenovo.com>

Lenovo

PSREF  
Product Specifications  
Reference