



**TRACK FURTHER
LEARN BIGGER**

AVer DL10

Distance Learning Tracking Camera





Equipped with high portability and a lightweight design, any educator can use the DL10 to directly connect to his/her laptop via USB port to start distance teaching anywhere. Featuring a Full HD 1080p resolution and a 2 megapixels camera, the DL10 delivers premium image quality. Through the DL10's three AI auto tracking modes and intuitive gesture control, teachers can easily setup different modes to create perfect classes.



Portable & Light-Weight



3 AI Tracking Modes



Gesture Control



Built-In Mic



2

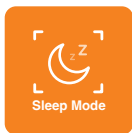
Outputs
IP & USB
Outputs



2 Megapixels



6X Total Zoom



Sleep Mode



Distance Learning
Ready



Perfect for
Hybrid Teaching

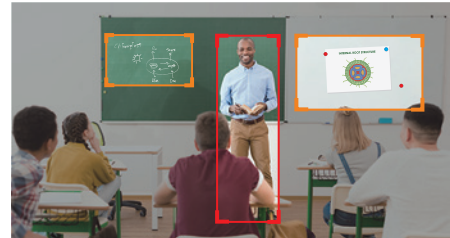
Light-Weight & Portable

The DL10 weighs only 745g, giving teachers freedom to take work anywhere - just place the DL10 directly on the desk or on the tripod. USB plug-and-play functionality allows teachers to start distance teaching anytime, anywhere.



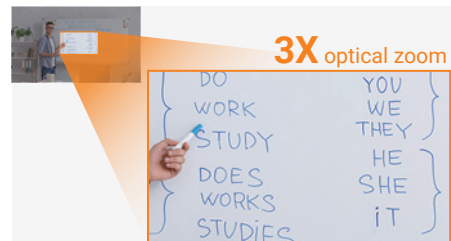
AI Auto Tracking

Equipped with industry leading AI auto-tracking algorithms, the DL10 can share the teacher's every move with the students. The DL10's AI does all the tracking work, without requiring any annoying add-on sensors or devices. Never worry about walking out of the frame or going out of focus again, remote students can see you on the screen wherever you go.



Balanced Zoom Ratio

With budget in mind for schools, the DL10 is the perfect solution: 3X optical zoom delivers clear details, and 6X total zoom ratio is perfect for online or hybrid teaching in any standard K-12 classroom or at home.



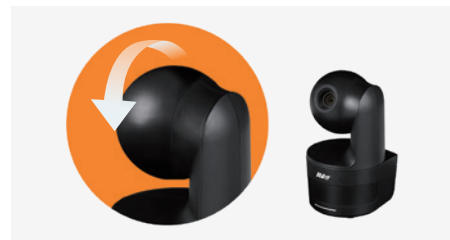
Noise Suppression Microphones

The DL10's built in advanced noise suppression technology detects the teacher's speech while decreasing environmental noises such as keyboards, mice, and books, delivers clearer sound quality for an excellent audio visual experience.



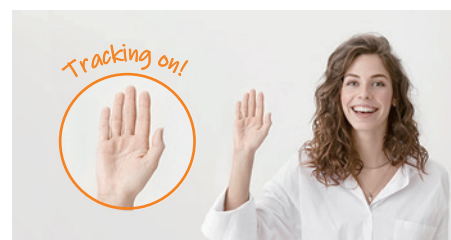
Sleep Mode for Privacy

Simply turn off your laptop or software when you finish teaching, and the DL10 will go to Sleep Mode and switch off all functionality within 10 seconds. When it's time to start teaching again, the DL10 will resume right where you left off with tracking and other settings unchanged. The DL10 makes privacy protection the way it should be: easy.



Innovative Gesture Controls

Gesture control allows the teacher to use intuitive gestures to turn on and off tracking, adjust shooting angles for bodies, etc. without touching the screen or using the keyboard, mouse, or remote control.



Product Specifications

Part No. 61S900000AD (EU & UK sku)
EAN code 4719552127016

Camera		General	
Image Sensor	1/2.8" 1080p Low Lux CMOS	Power Requirement	AC 100 - 240V to DC 12V/2A
Effective Picture Elements	2 Megapixels	Power Consumption	11W
Output Resolutions	1080p/60 (IP Streaming & USB)	PoE+	N/A
Minimum Illumination	0.5 Lux (IRE50, F2.0, 30fps)	Dimensions (W x H x D)	92.4 x 164.0 x 94.4 mm
S/N Ratio	≥ 50 dB	Net Weight	0.745 kg
Gain	Auto, Manual	Application	Indoor
TV Lines	800 (Center/Wide)	Tally Lamp	N/A
Shutter Speed	1/4 to 1/10,000 sec (60 Hz); 1/3 to 1/10,000 sec (50 Hz)	Security	Kensington Slot
Exposure Control	Auto, Manual, WDR	Remote Control	Infrared
WDR	Yes	Operating Conditions	Temperature: 0°C to 40°C; Humidity: 20% to 80%
White Balance	Auto, Manual	Storage Conditions	Temperature: -20°C to 60°C; Humidity: 20% to 95%
Optical Zoom	3X	IP Streaming	
Digital Zoom	2X	Resolution	1080p 60fps
Viewing Angles	DFOV: 90° (Wide) to 35.8° (Tele)	Network Video Compression Formats	H.264, MJPEG (Web Page)
	HFOV: 82° (Wide) to 31.7° (Tele)	Network Audio Compression Formats	AAC-LC
	VFOV: 51° (Wide) to 17.9° (Tele)	Sample Rates	48, 32, 16, 8 KHz
Focal Length	f = 3.3 mm (Wide) to 9.7 mm (Tele)	Maximum Frame Rate	1080p 60fps
Aperture (Iris)	F = 2.0 (Wide) to 3.7 (Tele)	Bit-Rate Control Modes	VBR, CBR
Minimum Working Distance	0.5 m (Wide), 1.0 m (Tele)	Bit-Rate Range Setting	512 Kbps to 32 Mbps
Pan/Tilt Angles	Pan: ±170°; Tilt: ±90°	Network Interface	10/100 Base-T
Pan/Tilt Speed (Manual)	Pan: 1° to 100°/sec; Tilt: 10.8° to 100°/sec	Multi-Stream Capability	2 (1 for IP Streaming, 1 for Web Page), (1 for USB, 1 for Web Page), 1080p 60fps (max.)
Preset Speed	Pan: 200°/sec; Tilt: 200°/sec		3 (1 for IP Streaming, 1 for Web Page, 1 for USB), 1080p 30fps (max.)
Preset Positions	10 (IR), 256 (IP & USB)		Network Protocols
Camera Control - Interfaces	IP, USB	NDI® HX Capability	N/A
Camera Control - Protocols	VISCA (IP), CGI (IP), USB	USB	
Image Processing	Noise Reduction (2D/3D), Flip, Mirror, WDR	Connector	USB 3.1 Gen 1 Type-B
Power Frequencies	50 Hz, 60 Hz	Video Formats	MJPEG, YUY2
AI Auto Tracking Functions		Maximum Video Resolution	1080p
Tracking Modes	Presenter Mode, Zone Mode, Hybrid Mode	USB Video Class (UVC)	UVC 1.1
Gesture Control	Yes (Tracking On/Off, Full/Upper Body)	USB Audio Class (UAC)	UAC 1.0
Privacy Protection Mechanisms		Software Tools	
Protection Modes	Privacy Mode, Sleep Mode	IP Search and Configuration Tool	Supports Windows® 7 or later
Audio		PTZ Management	Supports Windows® 7 or later
Channels	Line in: 2ch Stereo; Mic in: Mono	PTZ Control Panel	Supports iOS & iPadOS® 9 or later
Codecs	AAC-LC (48, 32, 16, 8K), PCM (48K)	OBS Plugin for PTZ Cameras	Supports Windows® 8 or later, macOS® 10.13 or later
Sample Rates	48, 32, 16, 8 KHz	CaptureShare	Supports Windows® 7 or later, macOS® 10.14 or later
Microphones		Warranty	
Built-in Microphones	2 (Omnidirectional)	Camera	3 Years
Noise Suppression	Yes	Accessories	1 Year
Pickup Range	5 m	Package Contents	
Sensitivity	-33 dBFS	Camera, Remote Control, Power Adapter, Power Cord, USB Cable, Cable Ties (x3), Cable Fixing Plate, M2 x 4mm Screws (x2), 1/4"-20L 7.5mm Screw (x1), Quick Start Guide	
Frequency Response	30 Hz to 20 KHz	Optional Accessories	
Maximum SPL	129 dB SPL at 0.5 m	Wall Mount Kit (Brackets (x2), M4 x 8mm Screws (x2), 1/4"-20L 7.5mm Screw (x1), Wall Mount Kit Installation Guide), Ceiling Mount Kit (Brackets (x2), M3 x 6mm Screws (x3), 1/4"-20L 7.5mm Screws (x3), Ceiling Mount Kit Installation Guide), Tripod	
Interface			
Video Outputs	IP, USB		
Audio Outputs	IP, USB		
Audio Inputs	Line in, Mic in		
Web UI			
Live Video Preview	Yes		
Camera PTZ Control	Pan, Tilt, Zoom, Focus, Preset Control		
Camera/Image Adjustment	Exposure, White Balance, Picture		
Network Configuration	DHCP, IP Address, Gateway, Subnet Mask, DNS		

* Specifications may vary depending on location and are subject to change without notice.

Product Appearance

Front



Back



©2022 AVer Information Europe B.V. All rights reserved.
All brand names and logos are trademarks of their respective companies.

Distributor/Dealer