



User Manual

VL-D640B/D640T

Professional & Ultrathin LED Light



VL-D640B/T is a high-brightness LED Light adopting high quality LED bulbs which lower consumption and long life. The color temperature and brightness can be adjusted according to your needs. It is suitable for outer door shooting and more varieties of shooting scenes.

Main features:

- Adopt high quality LED bulbs. Max power is 50W.
- Soft light, Accurate color temperature and uniformity
- FSK 2.4Ghz wireless remote controller system. 6 groups 19 channels grouping control.
- Dual power supply: lithium battery/DC power supply.
- HD LCD screen to make the operation more convenient and accurate.
- The thickness is only 32mm and weight is only 800g.



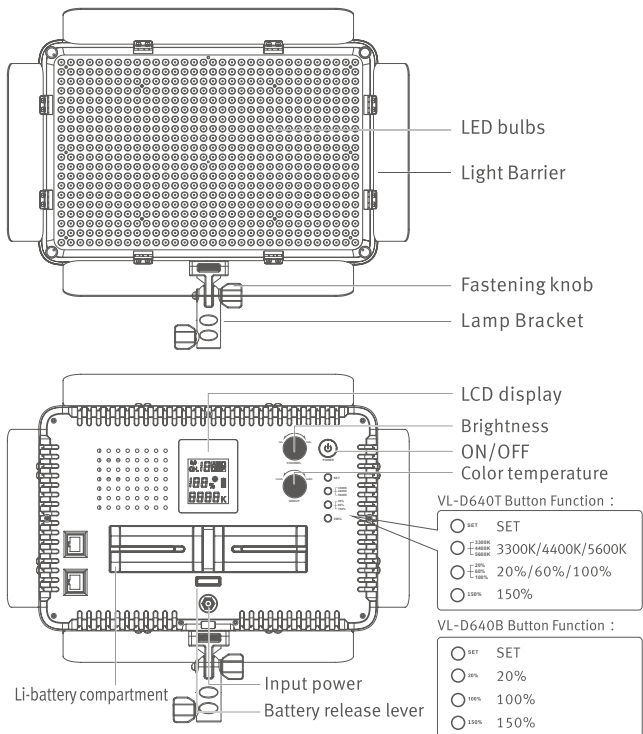
FAQ and attention

- Please replace the battery in the power-off state.
- Do not use the light directly close to people's eyes, otherwise it may damage the retina.
- Do not touch the lamp body during a long time using to avoid being burned.
- Place other objects at least 15cm away from the light.
- Prevent the lamp body from strong vibration, otherwise it may cause failure, leading to the component damage.
- If not use the remote control in a long time, please remove the light and the remote control battery to preserve.
- Do not attempt to disassemble or repair the lights by yourself, otherwise it may cause electric shock or light fault.
- Please do not keep the product under a heavy object nor high temperature, or it will be damaged.
- It is forbidden to cover any objects on the light that affect heat dissipation. Excessive temperature will shorten the life of the bulbs.
- To keep the light stable when installing it to avoid it falling down and causing damage. To prevent children and the elder from the light.
- If found smoking or burning smell, you should immediately stop operating and remove the battery to prevent the light from getting fired or burned.Before removing the battery, make sure that the light is fully cooled .
- The light can not be soaked in water or exposed to rain or water vapor, unless there is appropriate protection to prevent liquid and water vapor. If water comes into the light, it may cause light to catch fire or get electric shock. In this case, you are supposed to cut off the power immediately or remove the battery.
- Do not use the light in the presence of combustible or explosive gases. If using the light on the place with flammable gases (including propane, gasoline and dust),it may cause an explosion or fire.

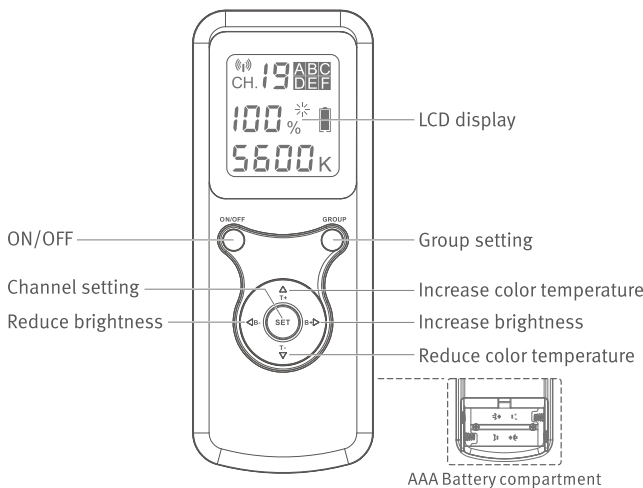


LED Light component

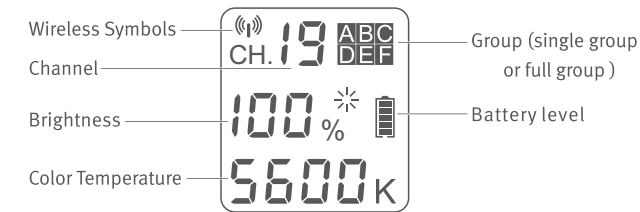
1. Body



2. Remote Controller



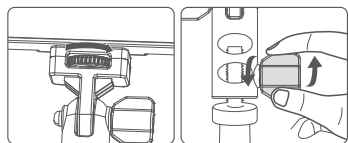
3. LCD display



Before you start

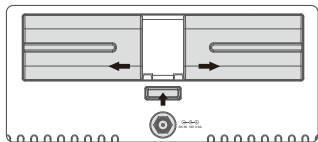
● Install the LED Light

- Put the bracket holder into the 1/4" screw port of the LED Light, then tighten the knob.
- Put the bracket holder into the lamp bracket, adjust it to a proper angle, then tighten the knob.



● Install Li-battery

There are two power supply modes for your choice. Lithium battery can be used outdoor when power supplying is inconvenient and appropriate power adapter can be used indoor.

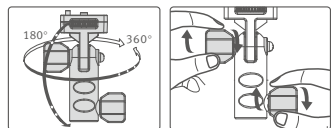


- Lithium Battery :** Fix the lithium battery according to the lithium battery type marked on the light and the polarity marked on the lithium battery compartment. (Attention: Only by inserting two lithium batteries will the light work.)

● **DC power supply :** According to the DC power specification signed on the LED Light, choose the right power source adapter, after connecting the power source adapter well, insert the power source as the mark on the LED Light.

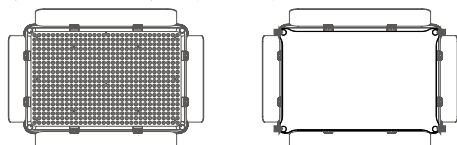
● Adjust the Angle of Rotation

To use the tighten knob of the bracket holder: Rotate 180° upwards and forwards, 360° left and right.



● Soft Plate Installing

Align the four corners of magnetic parts on the soft plate completely to those on the LED light. Put the soft plate closely to the LED light and the soft plate will be pulled to the lamp body naturally.



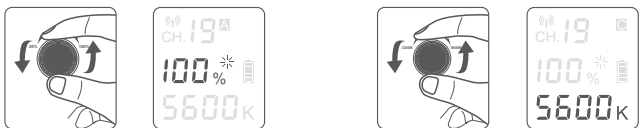
● Remote Control Battery

Slide down the Battery cover, put the battery into the battery compartment and slide back the battery cover.



LED Light Setting

- Insert the Li-battery or DC power, press <ON/OFF> power switch to light up the LCD Screen. Then the related parameters can be set at this moment. Remarks: VL-D640B does not support color temperature adjustment.

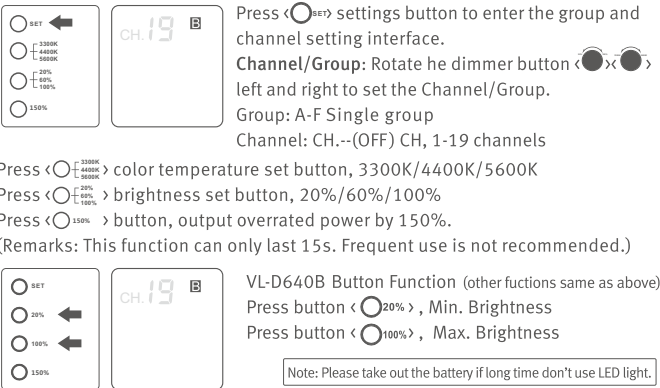


Brightness adjusting

Rotate the dimmer button <B+/B-> left and right, and the brightness will be increased or decreased. Brightness range: 20%-100%

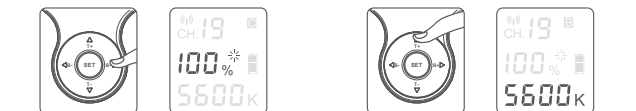
Color temperature adjusting

Rotate the dimmer button <T+/T-> left and right, and the color temperature value will be increased or decreased. Color temperature range: 3300K-5600K



Remote Controller Setting

Press <ON/OFF> power switch to turn on the remote controller, then you can set relative parameters by wireless remote controller. Attention: In the shutdown state, short press the power switch button to turn on/off the current group LED light, Long press to cut off the remote controller.

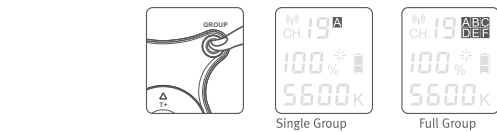


Brightness adjustment :

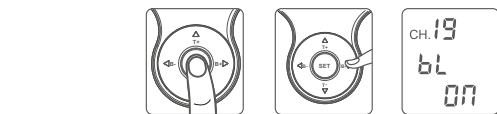
Press <B+/B-> button to adjust current group brightness. Short press to increase/decrease the brightness by 1%. Long press to increase/decrease the brightness by 5%. Brightness range : 20%-100%

Color temperature adjustment :

Press <T+/T-> button to adjust the current group color temperature. Short press to increase/decrease by 100K. Color temperature range: 3300K-5600K



Group adjustment : Shot press group <GROUP> button, you can switch to different groups. You can set the brightness and color temperature of each group individually. Long press <GROUP> group button, all groups will show in the same time, then you can set the parameters for all the groups. Long press or shot press the group button to return to singles group setting.



Channel setting : Long press <CH> setting button, enter the channel setting interface. Shot press <CH><CH> to switch channels. Turn on/off the backlight: Shot press <CH><CH> to turn on/off backlight. Shot press <CH> button to exit channel setting interface.



Specifications

Model	VL-D640B	VL-D640T
Color temperature	5600K ± 300 (Fixed)	3300K-5600K (adjustable)
Brightness	20%~100% (adjustable)	20%~100% (adjustable)
Max. Brightness	5300 LM	4800 LM (4400K, 100%Full)
Max. Illuminance	4300Lux/1m	4100Lux/1m(4400K,100%Full)
Lamp beads	640pcs (5600K)	640pcs (3300K+5600K)
Power (max.)	50W	
Continue light time	Approx. 1.5h (100%Full, NP-F960,4800 mAh)	
Group	6 Groups (A, B, C, D, E, F)	
Channel	1~19	
Color rendering index	≥95 (RA)	
DC adapter Interface	DC18V/3.5A, Φ5.5-2.5mm	
Lithium battery	Li-battery NP-F550 / F570 / F960 / F970 series	
Dimension	286mm × 190mm × 32mm	
Weight	Approx.620 g (exclude batteries)	
Standard Accessory	LED light *1 Lamp Bracket *1 Remote controller *1 Manual *1 DC adapter *1 (AC100-240V~50/60Hz) Soft Plate*1	

Model	VL-500RT Remote Controller
Frequency	FSK 2.4GHz wireless remote system
Control distance (in open air)	20 meters
Wireless remote group	Single group (A, B, C, D, E, F), Full group(ABCDEF)
Channel	19
Stand-by time	2.5 minutes without operation, it will off automatic
Environment temperature	-10~50°
Power	R03 Size AAA 1.5V battery
Dimension	141mm × 55mm × 18mm
Weight	Approx. 100g (exclude batteries)

Shenzhen Jueying Technology Co.,Ltd. www.viltrox.com
2/F, Bldg 4, Baokun Science and Technology Industrial Park, Xialingpai, Dalang Str.,Bao'an,Shenzhen,518109,China

Size: 400*250 (折:100*250)

VILTROX®

产品说明书

VL-D640B / D640T

专业超薄LED补光灯



VL-D640B/D640T 是款高亮度补光灯，精选多颗LED优质灯珠，亮度高，色温精准，适用于不同等级的弱光线场合。为婚庆拍摄、新闻现场、静物拍摄、视频拍摄等提供充足而稳定的补光光源。

主要特点：

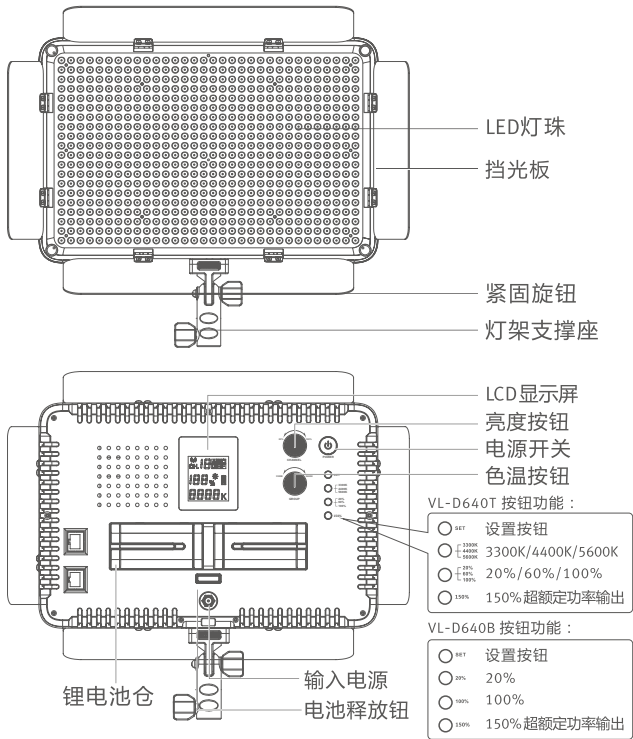
- 精选多颗LED优质灯珠、最大功率50w
- 光线柔和、精准色温、照明均匀
- FSK2.4GHz无线控制系统，6组19频道分组控制
- 双供电系统：锂电池或DC电源供电
- 高清LCD液晶显示屏，操作更加便捷，准确
- 产品厚度仅为32mm，仅重800克

注意事项

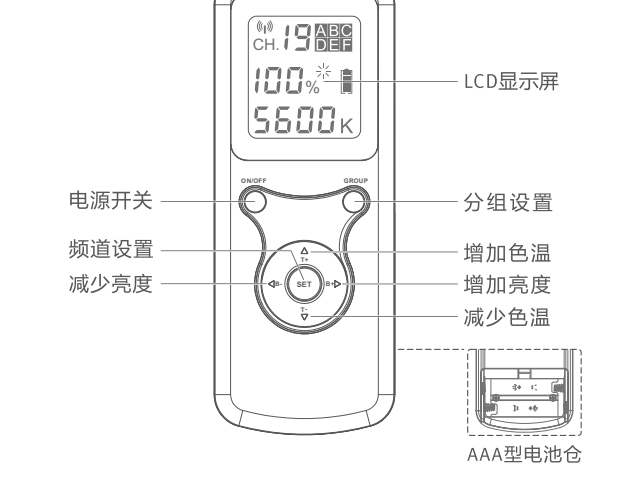
- 请在断电状态下更换电池。
- 请勿在近距离对别人的眼睛直接使用补光灯，否则可能损伤其视网膜。
- 请勿在较长亮灯过程中，碰触到灯体，以免烫伤。
- 请将其他物品放置于距离补光灯至少15厘米远处。
- 请勿使灯体受到强烈振动，否则可能引起故障，导致元件损坏。
- 若较长不使用遥控器，请将补光灯及遥控器内的电池取出保存。
- 请勿试图自行拆卸或修理补光灯，否则可能引起触电或补光灯故障。
- 请勿将产品置于重物或高温之下，否则可能导致损坏。
- 禁止在灯具上覆盖任何影响散热的物品，过高的温度会缩短LED灯珠使用寿命。
- 安装时确保灯具稳当，避免较重的灯具掉落伤害，避免儿童老人触及本灯具。
- 如发现冒烟或烧灼气味，应立即停止操作并取出电池，以防止补光灯着火或烧灼，在取出电池之前应使补光灯充分冷却。
- 补光灯不得浸水，或使其接触到雨水或水汽，除非有适当的保护以隔绝液体及水汽。如灯进水，则可能造成补光灯着火或发生触电，在此情况中，应立即切断电源或取出电池。
- 有可燃性或爆炸性气体存在时不要使用本补光灯，如有可燃性气体（包括丙烷、汽油及粉尘）的场所使用补光灯，则可能引起爆炸或火灾。

部件识别

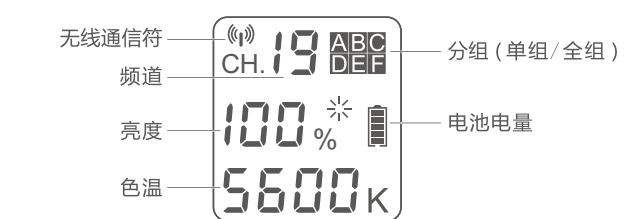
1. 主灯



2. 遥控器



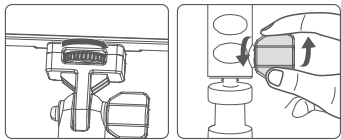
3. 液晶显示屏



使用前准备

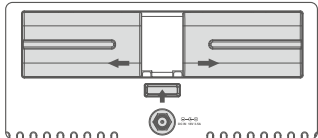
● 安装补光灯支架

- 将灯架支撑座装入补光灯1/4" 螺纹接口，拧紧旋钮。
- 将灯架支撑座底部装入灯架上调整合适角度后，拧紧旋钮。



● 安装电池

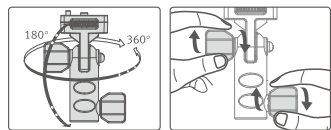
补光灯有2种供电方式可以使用，在室外供电不方便的情况下可以选用锂电池供电，室内可以采用专用的电源适配器供电。



- 锂电池：根据补光灯上所标示的锂电池型号，固定好锂电池。（注：必须装上2个锂电池，补光灯才能工作）
- DC电源：根据补光灯上所标示的电源规格，选用正确的电源适配器，连接好电源适配器后，按补光灯上的标示插入电源。

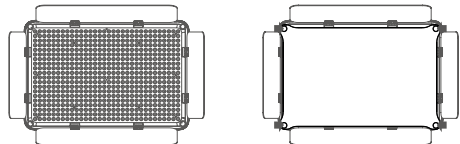
● 旋转角度调整

使用灯架支撑座的紧固旋钮：前后旋转180°，左右旋转360°
注：上仰和旋转时请勿施加过大的力量。



● 安装柔光板

将柔光板带磁铁的部位四角处对准补光灯的磁铁位，当柔光板靠近补光灯将自然吸合到灯体上。

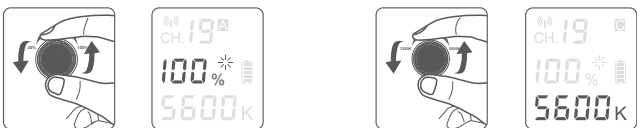


● 安装遥控器电池

向下滑动电池仓盖，将电池放入电池仓内并推回电池仓盖。

主灯设置

- 插入锂电池或DC电源，按下<电源>电源开关，LCD显示屏点亮，此时，可设置补光灯相关参数。（注：VL-D640B不支持色温调节）



亮度调节：左右旋转<亮度>调光按钮，可增减亮度值。
亮度范围：20%~100%

色温调节：左右旋转<色温>调光按钮，可增减色温值。
色温范围：3300K~5600K

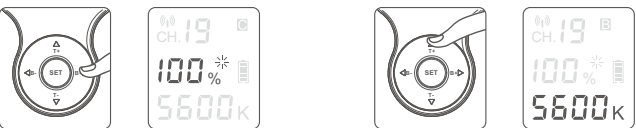
- 按下<SET> 设置按钮，进入分组频道设置界面。
- 频道/分组：**左右旋转<亮度><色温>调光按钮，可设置频道/分组。分组：A~F 单组
频道：CH... [关闭]，CH.1~19个频道
 - 按下<色温> 色温按钮，3300K/4400K/5600K
 - 按下<亮度> 亮度按钮，20%/60%/100%
 - 按下<150%> 按钮，以150%超额定功率输出（注：持续15秒，不可频繁使用该功能）

- VL-D640B按钮功能（其他调节功能同上）
 - 按下<20%> 按钮，最小亮度
 - 按下<100%> 按钮，最大亮度

提示：长时间不使用补光灯，请取出电池。

遥控器设置

按下<电源> 电源开关，开启遥控器，可无线遥控调节补光灯相关参数。
注：开机状态下，短按电源开关：开/关当前组的补光灯，长按：关闭遥控器电源。

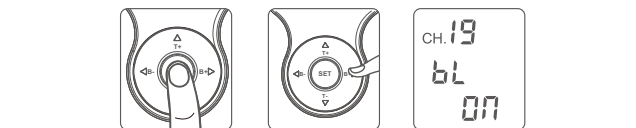


亮度调节：按<B+/B->键，调节当前组的亮度值，短按以1%增减亮度值，长按以5%增减亮度值。
亮度范围：20%~100%

色温调节：按<T+/T-> 键，调节当前组的色温值，短按以100K增减色温值。色温范围：3300K~5600K



分组调节：短按<GROUP> 分组键，可切换不同分组，可单独设置每组灯的亮度及色温；
长按<GROUP> 分组键，所有组同时显示，可设置同频道所有组的参数，长按或短按分组键返回单组设置。



频道调节：长按<设置> 设置键，进入频道设置界面，短按<Δ><▽> 切换频道参数。
开启/关闭背光灯：短按<左><右> 开启/关闭背光灯；短按<设置> 键退出频道设置界面。

产品参数

型号	VL-D640B	VL-D640T
色温范围	5600K±300（固定）	3300K~5600K（可调）
亮度范围	20%~100%（可调）	20%~100%（可调）
最高亮度	5300 LM	4800 LM（4400K，100%全亮）
最高光照度	4300Lux / 1m	4100Lux / 1m（4400K，100%全亮）
灯珠数量	640颗（5600K）	640颗（3300K+5600K）
最大功率	50W	
照明时间	约1.5小时（100%全亮，NP-F960，4800 mAh）	
分组	6组（A，B，C，D，E，F）	
频道	1~19个	
显色指数	≥95（RA）	
DC电源接口	DC 18V/3.5A Φ5.5-2.5mm	
锂电池	锂电池NP-F550/F570/F960/F970系列（可另购）	
尺寸	约286mm × 190mm × 32mm	
重量	约620g（不含电池及柔光板）	
标配附件	补光灯*1 灯架支撑座*1 遥控器*1 说明书*1 柔光板*1 电源适配器（AC100-240V~50/60Hz，DC18V/3.5A，Φ5.5*2.5mm）	

型号	VL-500RT 遥控器
无线频率	FSK 2.4GHz 无线控制系统
遥控距离(空旷)	20米
无线遥控分组	单组（A、B、C、D、E、F），全组（ABCDEFG）
频道	19个
待机时间	2.5分钟无操作后，自动关机
环境温度	-10~50°
电源	R03 AAA 1.5V 7号电池
尺寸	141mm × 55mm × 18mm
重量	约100g（不含电池）

深圳市爵影科技有限公司
地址：深圳市 龙华新区 大浪街道 下岭排村 宝坤科技工业园4栋2楼

www.viltrox.com