

WITHINGS

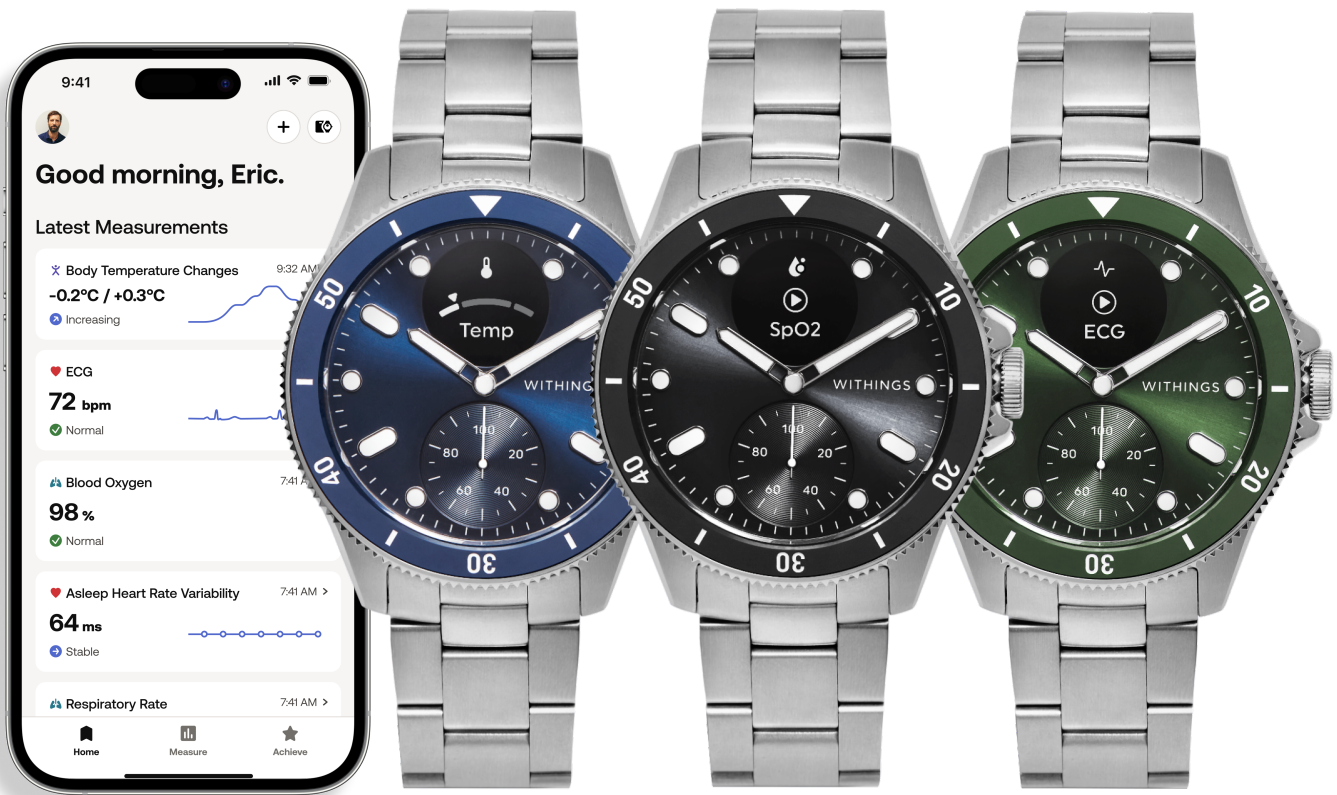
# ScanWatch Nova

Electrocardiogram

| 24/7 Temperature Variation Tracking

| Respiratory Insights

Clinical precision\* meets luxury design



Breathtaking design, phenomenal battery life, for powerful health scans.



Clinically developed in collaboration with top hospitals and institutions

\*ECG clinically evaluated available via Withings Scan Monitor

WITHINGS

# The watch that improves your health

## Crucial Health Benefits

### MAY INDICATE THE ONSET OF AN ILLNESS

WORLD PREMIERE

Discover baseline day and night temperature fluctuations, which may indicate the onset of an illness or other health condition, and boost your ability to manage performance and recovery via workout temperature variation zones.

OVERNIGHT BODY TEMPERATURE | DAYTIME BODY TEMPERATURE | TEMPERATURE ZONES DURING WORKOUTS

### ASSESSES PART OF THE RESPIRATORY SYSTEM

Gain peace of mind with on-demand blood oxygen, plus track overnight breathing disturbances as well as average blood oxygen during sleep.

OVERNIGHT SPO2 | ON-DEMAND SPO2 | BREATHING DISTURBANCES

### BOOSTS ACTIVITY

Monitor every move with 40+ activities recognized, assess your performance with heart rate zones, Fitness Level via VO2 max estimation, and see progress towards goals right on the watch.

ACTIVE MINUTES | PACE | CALORIES BURNED | DISTANCE | FITNESS LEVEL | HEART RATE ZONES | CONNECTED GPS

### PERFORMS A MEDICAL-GRADE ELECTROCARDIOGRAM

Receive heart health notifications that may direct you to take an on-demand electrocardiogram to detect atrial fibrillation.\*

ELECTROCARDIOGRAM | AVERAGE HEART RATE | HIGH/LOW RESTING HR NOTIFICATIONS | IRREGULAR RHYTHM NOTIFICATIONS\*\*

### LEADS TO MORE RESTFUL SLEEP

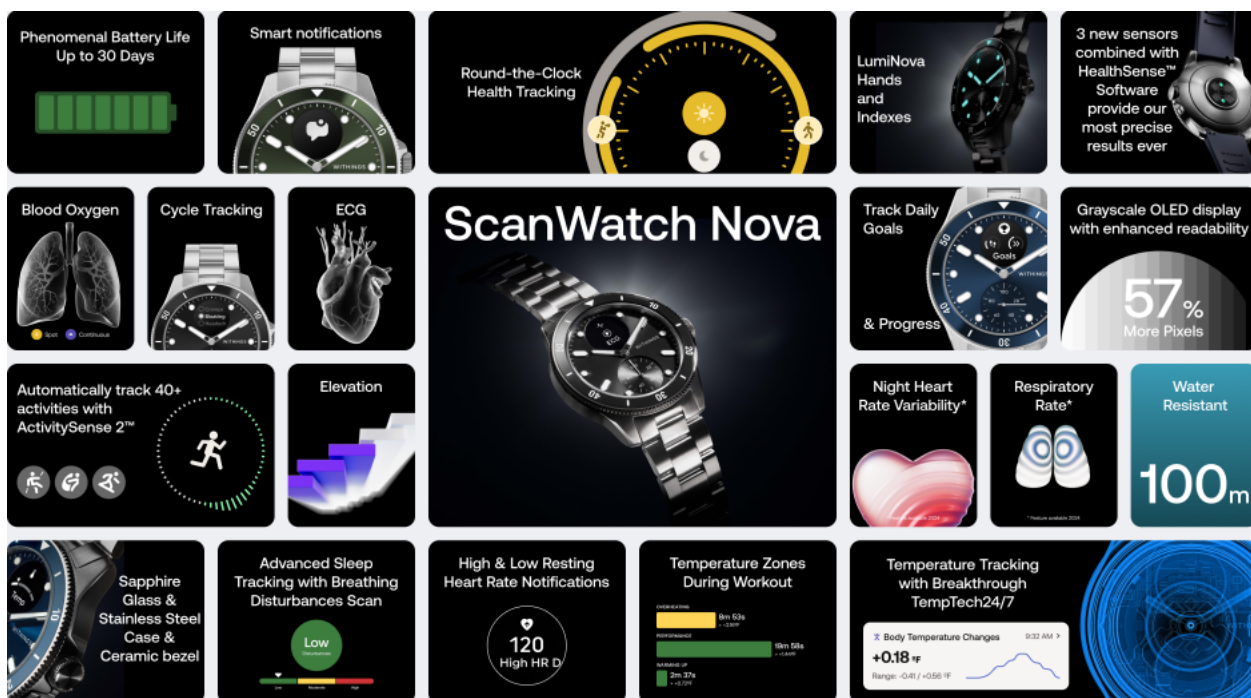
Wake to your Sleep Quality Score and deep dive into your sleep metrics with info on how to improve them.

QUALITY | PHASES | DURATION | DEPTH | IRREGULARITIES | INTERRUPTIONS

### PHENOMENAL BATTERY & BREATHTAKING DESIGN

Enjoy life more with 24/7 tracking for 30 days before needing to recharge, and a watch made with premium materials so you can lead an active life with confidence.

RECHARGEABLE BATTERY | WATER-RESISTANT 10ATM | SAPPHIRE GLASS | STAINLESS STEEL CASE | CERAMIC BEZEL | SUNRAY DIAL



## Metrics

### HEART HEALTH

- ECG - AFib detection\*
- Daily heart rate
- Overnight heart rate
- High & low heart rate notifications
- Irregular rhythm notifications\*\*
- Overnight heart rate variability\*\*

### 24/7 TEMP TRACKING

- Baseline variation of temp day & night
- Temperature zones during workout
- Awake temperature zones\*\*
- Recovery temp after workout\*\*

### SLEEP PARAMETERS

- Sleep quality score
- Sleep stages (deep, light)
- Sleep duration
- Interruptions
- Regularity

### RESPIRATORY INSIGHTS

- Blood oxygen levels: on-demand & nighttime average
- Respiratory rate\*\*
- Breathing disturbances tracking

### ACTIVITY TRACKING

- Heart rate zones during workout
- Recovery HR after workout\*\*
- Fitness Level via VO2 max estimation
- Active minutes
- Steps
- Calories burned
- Connected GPS: distance, pace & elevation
- Elevation: meters & floors

### CYCLE TRACKING

- Cycle phases
- Period log
- Cycle length
- Cycle symptoms log
- Period flow log
- Mood & feelings log
- Symptoms & flow trends

\*available via Withings Scan Monitor

\*\*Will be rolled out in a future update

# Leading edge technology

ScanWatch Nova benefits from more than 10 years of experience in holistic round-the-clock tracking which allows for the most precise watch experience and in-app insights. Part of the newest generation of our hybrid smartwatches, ScanWatch Nova includes upgraded HealthSense™ Software combined with new sensors to provide more metrics and improved accuracy.

## State-of-the-art sensors



### TEMPTECH24/7 MODULE

The TempTech24/7 module consists of an optimized combination of 4 sensors (thermistor, heat flux, PPG, accelerometer) powering an algorithm that delivers body temperature and a tailored in-app data visualization to provide the user's body temperature baseline and notifications.

### MULTI-WAVELENGTH PPG NEXT GENERATION

Our newly-upgraded PPG sensors are even more accurate thanks to 4 wavelengths and 16 PPG channels, which is how they can provide more health metrics such as respiratory rate and heart rate variability.

### HIGH DYNAMIC RANGE ACCELEROMETER

Upgraded with more directional sensors for activity & workout precision that also allows 40+ activities to be tracked automatically.

## HEALTHSENSE™ OS

HealthSense™ Software is our proprietary OS and includes continual firmware updates over time. It harnesses the power of our sensors and uses on-device ML to deliver instant and secure health metrics on the watch, proactive health notifications, and seamless navigation to consult or log data.

### POWERSENSE™ PRO (GEN 3)

Saves battery by detecting when the watch is not worn to avoid unnecessary tracking. Identifies the best time to launch a health measurement and sends a notification if necessary. Senses when the wearer is falling asleep or waking.

### HEALTH DATA HISTORY AT HAND

Trends for sleep, steps, distance, active minutes and so much more is now available directly on the watch.

### MANUAL LOGGING TO-GO

A dedicated menu for menstrual cycle logs is now available directly on the watch. Mood, vaginal discharge, and symptoms can be logged discreetly, at any time.

### ACTIVITYSENSE 2

Combined with our new accelerometer, this new generation features our proprietary activity recognition algorithms that now allows 40+ sports to be detected automatically.

### GOALS IN SIGHT

In addition to the signature steps goal dial, a new UI that compiles steps and active minutes is now available right on the watch.



\*\*Will be rolled out in a future update

WITHINGS



# Technical facts

## Design

### WEIGHT & DIMENSIONS

Dimensions: 42mm  
Weight (without wristband): 63gr (42mm)

### MATERIALS

Stainless steel case  
Anti-reflections Sapphire glass  
Ceramic and stainless steel bezel  
Stainless steel crown  
Super-LumiNova Hands and Indexes

### WATER RESISTANCE

10ATM

### SCREEN DISPLAY

High Resolution Grayscale OLED display  
14504 px, 282 PPI, 0.63"

### SENSORS

TempTech24/7 Module  
High Dynamic Accelerometer  
Multi-wavelength PPG 16 channels  
Altimeter

### BATTERY

30-day battery life  
Charging time: 2 hours  
Docking station (USB-C compatible)

## App & software

### CONNECTIVITY

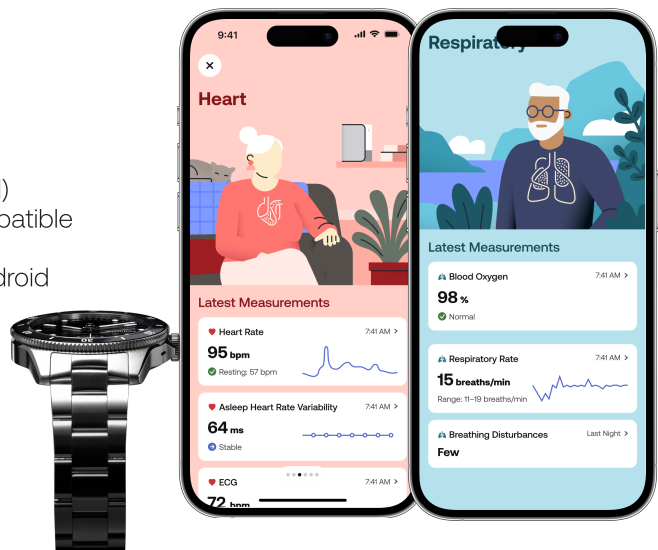
Bluetooth® Low Energy

### WITHINGS APP

Available on: App Store (iOS), Google Play Store (Android)  
Apple Health, Google Health Connect & Google Fit compatible  
Withings App Web dashboard  
iPhone, iPad, or iPod touch with iOS 15 and higher, or Android device with OS 9 and higher  
Cannot be set up from a computer

### STORAGE & MEMORY

Free and unlimited storage of all health data online  
7 days of health data stored on the watch



## Contents

### BOX CONTENT

ScanWatch Nova  
Oyster wristband  
FKM (fluoroelastomer) wristband with Stainless Steel buckle  
Docking station (USB-C compatible)  
USB-C to USB-A cable included  
Wristband toolkit (hammer, pin punch, holder)  
Quick Start Guide  
Product Guide

### RETAIL BOX DIMENSIONS

238 x 104 mm





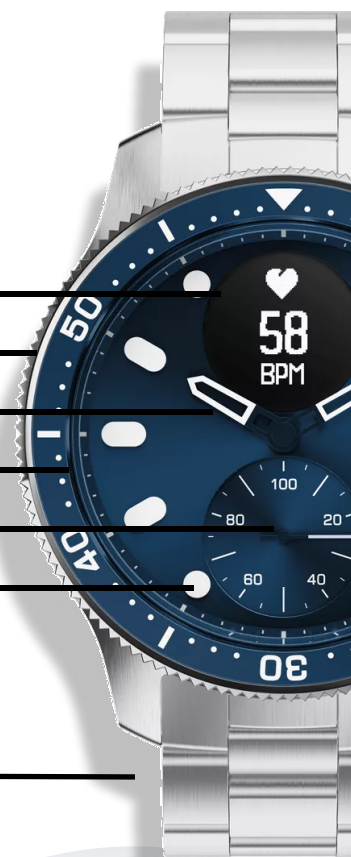
# Breathtaking design

## ScanWatch Horizon

43mm

- OLED Black & white screen
- Stainless steel & anodized aluminium bezel
- Hands with luminova
- Luminova Index
- Activity dial hand
- Activity dial sunray

20mm oyster wristband



## ScanWatch Nova

42mm



- OLED High Resolution Grayscale screen
- Mirror-polished ceramic and stainless steel bezel
- Mirror-polished full luminova hands
- Raised mirror-polished full luminova index
- Activity dial luminova hand with cap
- Sub dial guilloché
- Mirror-polished edge
- 20 to 18mm tapered oyster wristband