



# CorePro LED PLC 2P



## CorePro LED PLC 4.5W 830 2P G24d-1

CorePro LED PLC 2P integrates a LED light source into a traditional fluorescent form factor. This product is the ideal solution for uplamping in general lighting applications: it meets basic lighting requirements, offers significant energy savings, and is environmentally friendly.

### Product data

General information	
Cap-Base	G24D-1 [ G24d-1]
CE mark	Yes
EU RoHS compliant	Yes
Nominal Lifetime (Nom)	30000 h
Switching Cycle	50000
Flux measurement reference	Sphere
Tier	CorePro
Light technical	
Color Code	830 [ CCT of 3000K]
Beam Angle (Nom)	120 °
Luminous Flux (Nom)	475 lm
Color Designation	White (WH)
Correlated Color Temperature (Nom)	3000 K
Luminous Efficacy (rated) (Nom)	105.00 lm/W
Color Consistency	<6
Color Rendering Index (Nom)	83
LLMF At End Of Nominal Lifetime (Nom)	70 %
Operating and electrical	
Input Frequency	50 to 60 Hz
Power (Nom)	4.5 W

Lamp Current (Max)	25 mA
Lamp Current (Min)	20 mA
Starting Time (Nom)	0.5 s
Warm Up Time to 60% Light (Nom)	0.5 s
Power Factor (Nom)	0.9
Voltage (Nom)	220-240 V

Temperature	
T-Ambient (Max)	35 °C
T-Ambient (Min)	-20 °C
T-Storage (Max)	65 °C
T-Storage (Min)	-40 °C
T-Case Maximum (Nom)	60 °C

Controls and dimming	
Dimmable	No

Mechanical and housing	
Bulb Material	Plastic
Product Length	100 mm
Bulb Shape	Tube, single-ended

# CorePro LED PLC 2P

## Approval and application

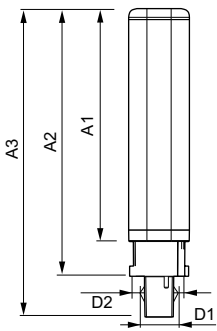
Energy Efficiency Class	F
Energy Saving Product	Yes
Approval Marks	TUV CE marking RoHS compliance KEMA Keur certificate
Energy Consumption kWh/1000 h	5 kWh
EPREL Registration Number	403560

## Product data

Full product code	871869670659600
-------------------	-----------------

Order product name	CorePro LED PLC 4.5W 830 2P G24d-1
EAN/UPC - Product	8718696706596
Order code	929001350702
Numerator - Quantity Per Pack	1
Numerator - Packs per outer box	10
Material Nr. (12NC)	929001350702
Net Weight (Piece)	0.070 kg

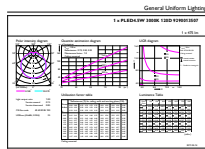
## Dimensional drawing



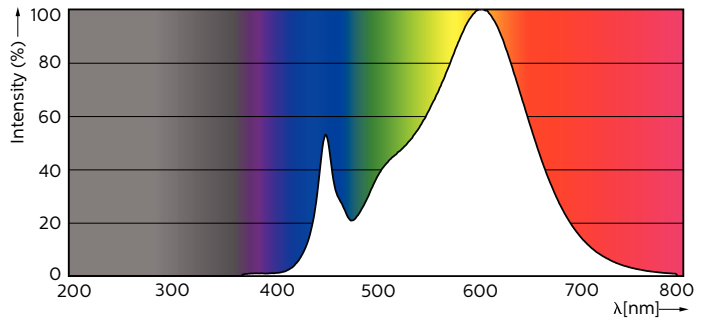
CorePro LED PLC 4.5W 830 2P G24d-1

Product	D1	D2	A1	A2	A3
CorePro LED PLC 4.5W 830 2P G24d-1	24.3 mm	28.4 mm	95.8 mm	115 mm	137.6 mm

## Photometric data



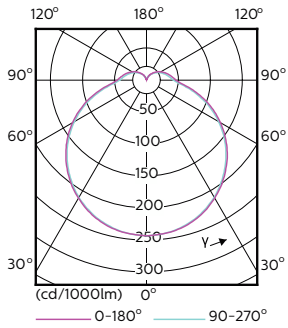
General uniform lighting



Spectral Power Distribution Colour

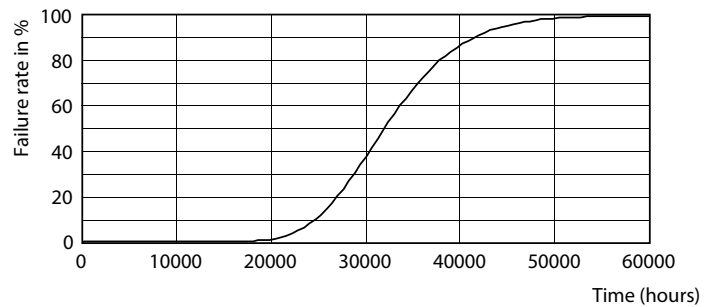
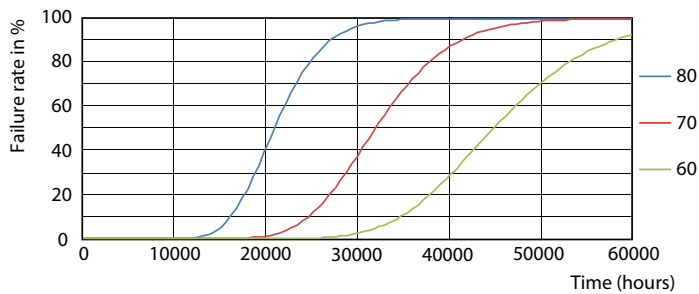
# CorePro LED PLC 2P

## Photometric data



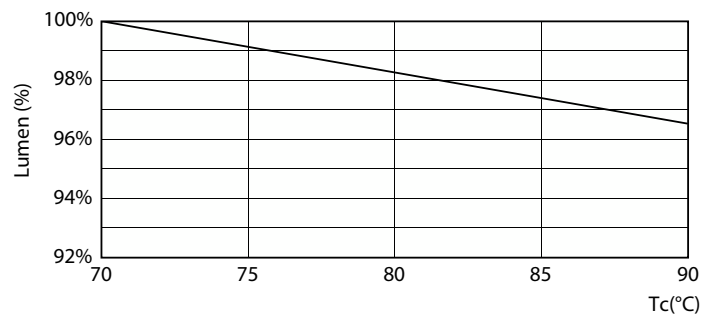
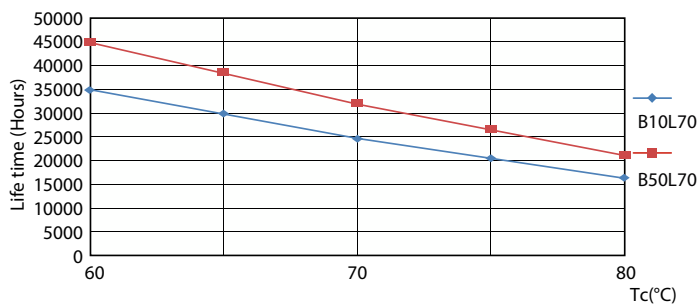
Light Distribution Diagram

## Lifetime



FailureRate

Life Expectancy Diagram

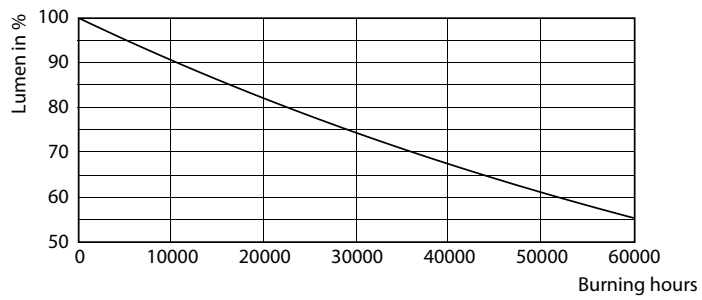


LifetimeVsTc

LumenVsTc

# CorePro LED PLC 2P

## Lifetime



Lumen Maintenance Diagram

