

MASTER LEDtube InstantFit HF T5



Master LEDtube HF 1500mm HE 20W 840 T5

The Philips MASTER LEDtube integrates a LED light source into a traditional fluorescent form factor. Its unique design creates a perfectly uniform visual appearance, which cannot be distinguished from traditional fluorescent. These T5 lighting tubes are the right choice for absolute performance and are designed to stand up to everyday conditions. Unparalleled savings thanks to low energy consumption and an exceptionally long lifetime make these T5 LED tubes the choice for every demanding application.

Product data

General information	
Cap-Base	G5 [G5]
CE mark	Yes
EU RoHS compliant	Yes
Nominal Lifetime (Nom)	60000 h
Switching Cycle	50000
Flux measurement reference	Sphere
Tier	MASTER
Light technical	
Color Code	840 [CCT of 4000K]
Beam Angle (Nom)	200 °
Luminous Flux (Nom)	3000 lm
Color Designation	Cool White (CW)
Correlated Color Temperature (Nom)	4000 K
Luminous Efficacy (rated) (Nom)	150 lm/W
Color Consistency	<6
Color Rendering Index (Nom)	80

LLMF At End Of Nominal Lifetime (Nom) 70 %	
Operating and electrical	
Input Frequency	30K to 100K Hz
Power (Nom)	20 W
Lamp Current (Max)	350 mA
Lamp Current (Min)	150 mA
Starting Time (Nom)	0.5 s
Warm Up Time to 60% Light (Nom)	0.5 s
Power Factor (Nom)	0.92
Voltage (Nom)	80-130 V
Temperature	
T-Ambient (Max)	45 °C
T-Ambient (Min)	-20 °C
T-Storage (Max)	65 °C
T-Storage (Min)	-40 °C

MASTER LEDtube InstantFit HF T5

T-Case Maximum (Nom)	65 °C
----------------------	-------

Controls and dimming

Dimmable	Yes - Check ballast compatibility
----------	-----------------------------------

Mechanical and housing

Bulb Finish	Frosted
Bulb Material	Glass
Product Length	1500 mm
Bulb Shape	Tube, double-ended

Approval and application

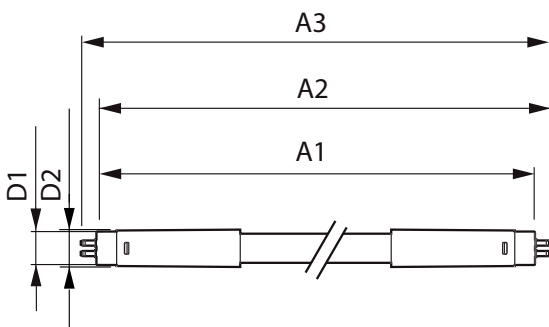
Energy Efficiency Class	D
Energy Saving Product	Yes
Approval Marks	RoHS compliance TUV CE marking KEMA Keur certificate

Energy Consumption kWh/1000 h	20 kWh
EPREL Registration Number	406190

Product data

Full product code	871869674337900
Order product name	Master LEDtube HF 1500mm HE 20W 840 T5
EAN/UPC - Product	8718696743379
Order code	929001391402
Numerator - Quantity Per Pack	1
Numerator - Packs per outer box	10
Material Nr. (12NC)	929001391402
Net Weight (Piece)	0.196 kg

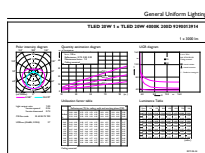
Dimensional drawing



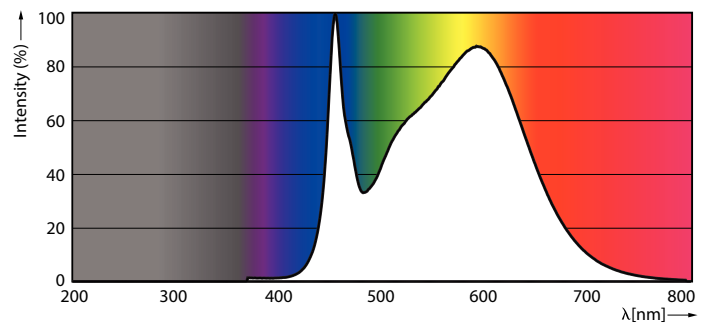
Master LEDtube HF 1500mm HE 20W 840 T5

Product	D1	D2	A1	A2	A3
Master LEDtube HF 1500mm HE 20W 840 T5	15.5 mm	18.8 mm	1449 mm	1456.1 mm	1463.2 mm

Photometric data



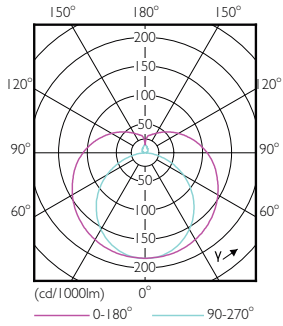
LEDtube 1500mm 20W G5 840 3000lm



LEDtube 1500mm 20W G5 840 3000lm

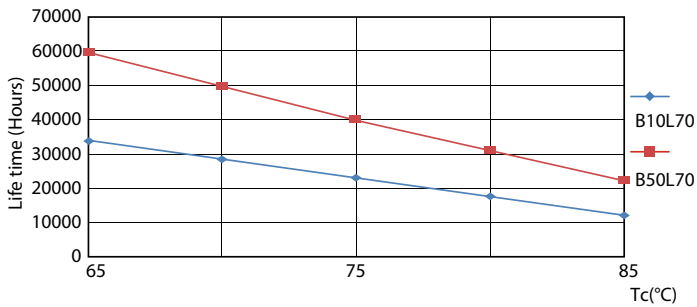
MASTER LEDtube InstantFit HF T5

Photometric data

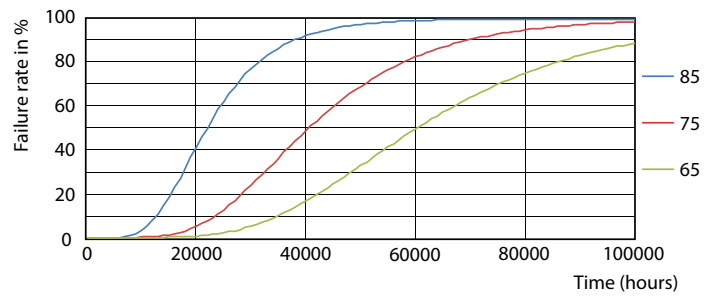


LEDtube 600mm 8W G5 830 1000lm

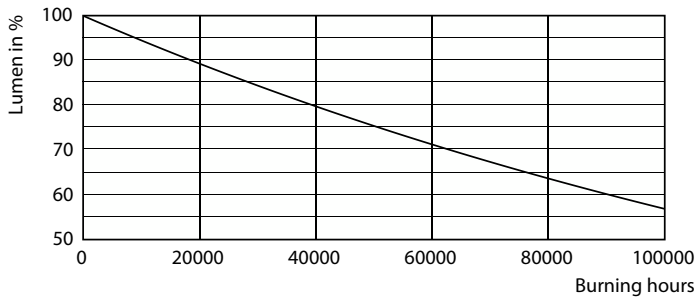
Lifetime



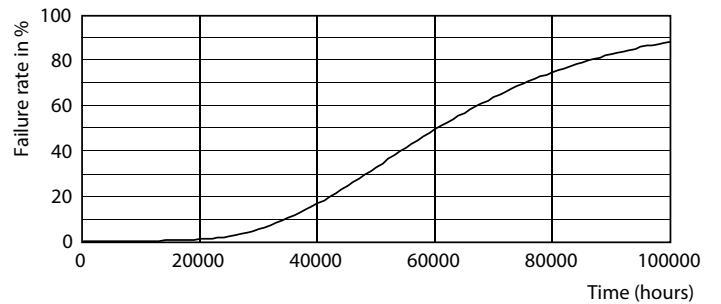
LifetimeVsTc



FailureRate



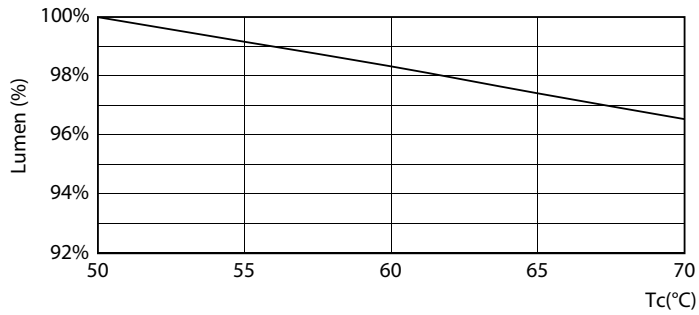
Lumen Maintenance Diagram



Life Expectancy Diagram

MASTER LEDtube InstantFit HF T5

Lifetime



LEDtube MAS SLR 20W 60K LumenVsTc-LMP

