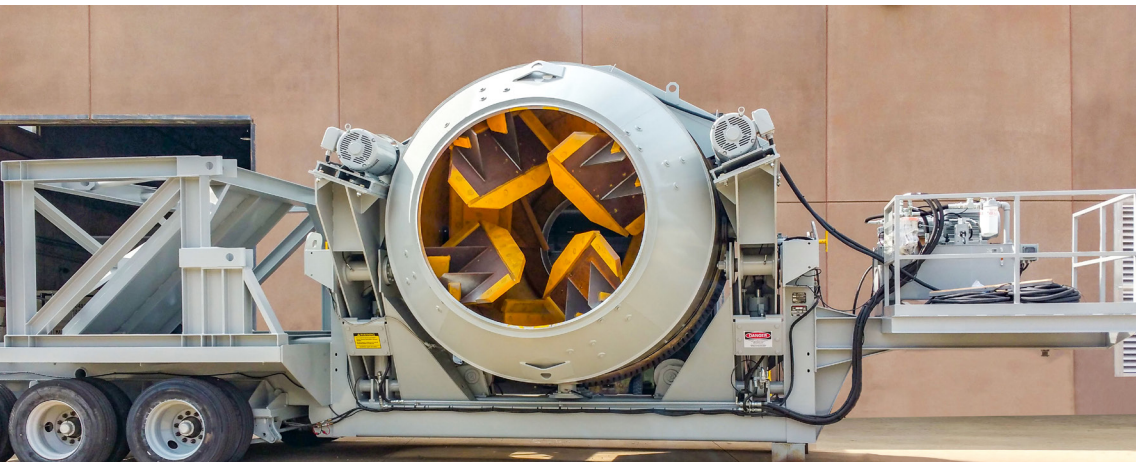


REXCON TILT MIXER PARTS CATALOG







Scan to locate the parts phone number.



Transit Mix to Central Mix Conversion

Astec specializes in the engineering of transit mix batch plant to central mix batch plant conversions.

There are several advantages to converting a transit mix batch plant into a central mix plant. For the vast majority of concrete producers, the advantages of central mix are numerous:

- Enhanced output quality
- Improved slump consistency
- Higher hourly production
- More project mix designs
- Significantly less wear on truck mixers
- Fundamentally, these advantages translate into economic and reputational benefits that quickly make up for the up-front cost of a mixer.

Concrete producers can achieve significant quality control improvement by switching to a central mix batch plant. This is because all concrete's slump is checked before leaving the plant, so consistency is greatly improved. Even if a producer is charging a ready mix truck from a central mix plant, the concrete will enter the truck mixer faster and will be premixed with slump control at the loading points.

When concrete is loaded into a truck mixer from a transit batch plant, material sees different mixing and slump from one truck to another. Overall, this means that a customer will have to make up for slump inconsistency by adding water at the jobsite. As the industry has learned, inconsistency in mix and water can have a detrimental impact on the quality of the finished product.

For those producers looking for both wet and dry operations out of a single plant, Astec has your solution. Certain concrete plants can be customized to include dual lanes - both central and transit mix out of a single plant simultaneously. Astec has the engineering and manufacturing expertise to convert practically any brand of concrete batch plant to adapt a Astec Mixer. Call us today to learn what it will take to convert your transit mix batch plant into a central mix batch plant.

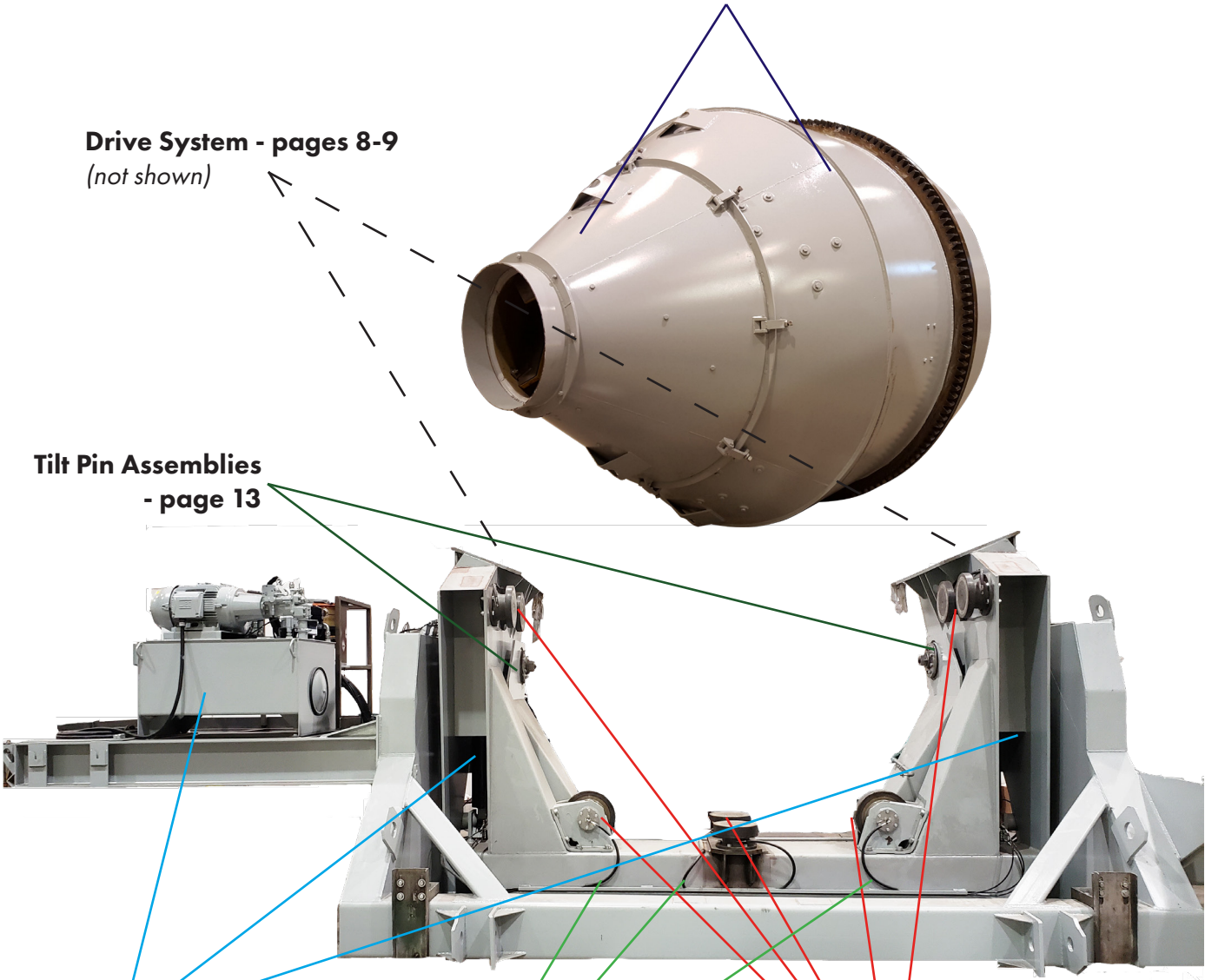


Control & Electrical Components -
page 14 *(not shown)*

Drum Assembly & Discharge Dump Cone -
pages 6-7

Drive System - pages 8-9
(not shown)

Tilt Pin Assemblies
- page 13



Hydraulics - pages 10-11

Roller Assemblies - pages 12-13

Auto Grease & Auto Lube Systems -
page 15



Detachable Discharge Cone

| Part Number | Drum Size | Qty | Description |
|----------------|-----------|-----|---------------------------|
| 502-03876-80 | 6 - 12M | 1 | Detachable Discharge Cone |
| 102-31436-01 | 6 - 12M | 8 | Poly Liner - Cone |
| 112-04714-01 | 6 - 12M | 6 | Steel Liner - Cone |
| 502-05962-80 | 6 - 12M | 4 | Steel Capacity Blade |
| 502-05962-POLY | 6 - 12M | 4 | Poly Lined Capacity Blade |
| 712-00913-01 | All | 1 | Latch Kit |

Standard Drum Assembly

| Part Number | Drum Size | Wrapper Size | Blade Style | Drum Liner | Blade Liner |
|--------------|-----------|--------------|-------------|------------|-------------|
| 612-05355-24 | 12L | 3/4" | Spiral | Poly | Steel |
| 612-05355-38 | 12L | 3/4" | Spiral | Poly | Wrap |
| 612-05355-26 | 12S | 3/4" | Standard | Poly | Steel |
| 612-05355-35 | 12S | 3/4" | Standard | Poly | Wrap |
| 612-05355-22 | 12 | 3/4" | Spiral | Poly | Steel |
| 612-05355-28 | 12 | 3/4" | Spiral | Poly | Wrap |
| 612-05355-19 | 12 | 3/4" | Standard | Poly | Steel |
| 612-05355-21 | 12 | 3/4" | Standard | Poly | Wrap |
| 612-05355-31 | 10 | 3/4" | Standard | Poly | Steel |
| 612-05355-33 | 10 | 3/4" | Standard | Poly | Wrap |
| 612-05355-10 | 8 | 3/8" | Standard | Poly | Steel |
| 612-05355-11 | 8 | 3/8" | Standard | Poly | Poly |



Detachable Cone Latch Kit

| Part Number | Qty | Description |
|--------------|-----|------------------|
| 712-00913-01 | 1 | Complete Kit |
| 502-02107-80 | 8 | Latch |
| 102-06240-01 | 8 | Pin |
| 112-07767-01 | 8 | 1" Sq. Head Bolt |
| 398-11000-58 | 8 | 1" Jam Nut |
| 398-03000-14 | 16 | Cotter Pin |



Poly Charge Cone Adapter

| Part Number | Drum Size | Qty | Description |
|----------------|-----------|-----|------------------------------|
| 644-10241-01 | 6 - 12M | 1 | Poly Charge Cone Adapter Kit |
| 502-03878-POLY | 6 - 12M | 1 | Poly Charge Cone Adapter |
| 134-10240-01 | 6 - 12M | 3 | Retainer |
| 298-00109-93 | 6 - 12M | 18 | 3/8" Bolt |
| 398-20000-23 | 6 - 12M | 18 | 3/8" Flat Washer |
| 398-11000-19 | 6 - 12M | 18 | 3/8" Nut |
| 398-20000-37 | 6 - 12M | 8 | 3/8" Lock Washer |

Blade Kits

| Part Number | Drum Size | Blade Style | Blade Liner |
|-----------------|-----------|-------------|-------------------------------------|
| 702-03100-WRAP | 12S | Standard | Poly Wrap |
| 702-03100-STEEL | 12S | Standard | Steel |
| 702-02999-WRAP | 12L | Spiral | Poly Wrap (Charge & Discharge Only) |
| 702-02999-STEEL | 12L | Spiral | Steel (Charge & Discharge Only) |
| 702-02996-WRAP | 12S | Standard | Poly Wrap |
| 702-02996-STEEL | 12 | Standard | Steel |
| 702-02998-WRAP | 12 | Spiral | Poly Wrap (Charge & Discharge Only) |
| 702-02998-STEEL | 12 | Spiral | Steel (Charge & Discharge Only) |
| 702-02993-WRAP | 10 | Standard | Poly Wrap |
| 702-02993-STEEL | 10 | Standard | Steel |
| 702-02990-POLY | 8 | Standard | Poly |
| 702-02990-STEEL | 8 | Standard | Steel |

* Blade kits do not include install hardware

Blade Hardware Kits

| Part Number | Drum Size | Blade Style |
|--------------|-----------------|-------------|
| 702-02999-HW | 12L | Spiral |
| 702-02998-HW | 12 | Spiral |
| 702-02996-HW | 8, 10, 12 & 12S | Standard |

Drum Liner Kits

| Part Number | Drum Size | Liner | Detachable Cone |
|--------------|-----------|-------|-----------------|
| 702-03396-01 | 12L | Poly | Included |
| 702-03395-01 | 12 | Poly | Included |
| 702-03393-01 | 10 | Poly | Included |
| 702-03392-01 | 8 | Poly | Included |

* Drum liner kits include blade install hardware kits

Blades

| Drum Size | Blade Description | Part Number | Qty | Style | Blade Liner |
|-----------|-------------------------------|-----------------|-----|----------|-------------|
| All | Charge Blade | 502-06240-WRAP | 4 | Standard | Poly Wrap |
| All | Charge Blade | 502-06240-STEEL | 4 | Standard | Steel |
| All | Discharge Blade | 502-05638-WRAP | 4 | Standard | Poly Wrap |
| All | Discharge Blade | 502-05638-STEEL | 4 | Standard | Steel |
| All | Capacity Blade | 502-05962-POLYB | 4 | Standard | Poly Faced |
| All | Capacity Blade | 502-05962-80 | 4 | Standard | N/A |
| 12L | Center/Charge End (3 Foot) | 512-07083-80 | 4 | Spiral | N/A |
| 12L | Center/Charge End (2 Foot) | 512-06987-82 | 4 | Spiral | N/A |
| 12L | Center/Discharge End (3 Foot) | 544-11768-80 | 4 | Spiral | N/A |
| 12L | Center/Discharge End (2 Foot) | 544-11769-80 | 4 | Spiral | Poly Wrap |
| 12S | 55° Center | 544-14975-WRAP | 2 | Extended | Poly Wrap |
| 12S | 30° Center | 544-14976-WRAP | 2 | Extended | Poly Wrap |
| 12S | 55° Center | 544-14975-STEEL | 2 | Extended | Steel |
| 12S | 30° Center | 544-14976-STEEL | 2 | Extended | Steel |
| 12 | Center/Charge End (Short) | 512-06987-83 | 4 | Spiral | N/A |
| 12 | Center/Charge End (Tall) | 512-06987-82 | 4 | Spiral | N/A |
| 12 | Center/Discharge End (Tall) | 512-06987-81 | 4 | Spiral | N/A |
| 12 | Center/Discharge End (Short) | 512-06987-80 | 4 | Spiral | N/A |
| 12 | 55° Center | 502-06259-WRAP | 2 | Standard | Poly Wrap |
| 12 | 30° Center | 502-06261-WRAP | 2 | Standard | Poly Wrap |
| 12 | 55° Center | 502-06259-STEEL | 2 | Standard | Steel |
| 12 | 30° Center | 502-06261-STEEL | 2 | Standard | Steel |
| 10 | Center | 502-05641-WRAP | 4 | Standard | Poly Wrap |
| 10 | Center | 502-05641-STEEL | 4 | Standard | Steel |
| 8 | Center | 502-06484-POLY | 4 | Standard | Poly Faced |
| 8 | Center | 502-06484-STEEL | 4 | Standard | Steel |

Mixer Drive Assemblies

| Drum Size (YD) | Motor HP | Blade Style | Side | Assembly Part Number | Motor Part Number | Reducer Part Number | 20T Pinion Part Number | QD Bushing Part Number | Omega Coupling Part Number |
|----------------|----------|-------------|------|----------------------|-------------------|---------------------|------------------------|------------------------|----------------------------|
| 12L | 125 | Spiral | F1 | 612-05352-01 | 212-00253-20 | 212-04584-91 | 412-01520-02 | 212-08144-91 | 112-08418-04 |
| 12L | 125 | Spiral | F2 | 612-05352-02 | 212-00254-20 | 212-04584-91 | 412-01520-02 | 212-08144-91 | 112-08418-04 |
| 12S | 125 | Extended | F1 | 612-05352-01 | 212-00253-20 | 212-04584-91 | 412-01520-02 | 212-08144-91 | 112-08418-04 |
| 12S | 125 | Extended | F2 | 612-05352-02 | 212-00254-20 | 212-04584-91 | 412-01520-02 | 212-08144-91 | 112-08418-04 |
| 12 | 100 | Spiral | F1 | 612-05352-04 | 112-08308-10 | 212-04580-91 | 412-01520-02 | 212-08144-91 | 112-08418-04 |
| 12 | 100 | Spiral | F2 | 612-05352-03 | 112-08308-09 | 212-04580-91 | 412-01520-02 | 212-08144-91 | 112-08418-04 |
| 12 | 100 | Standard | F1 | 612-05352-04 | 112-08308-10 | 212-04580-91 | 412-01520-02 | 212-08144-91 | 112-08418-04 |
| 12 | 100 | Standard | F2 | 612-05352-03 | 112-08308-09 | 212-04580-91 | 412-01520-02 | 212-08144-91 | 112-08418-04 |
| 12 | 60 | Standard | F1 | 612-05352-06 | 112-08308-08 | 212-04579-91 | 412-01520-02 | 212-08140-91 | 112-08418-01 |
| 12 | 60 | Standard | F2 | 612-05352-05 | 112-08308-07 | 212-04579-91 | 412-01520-02 | 212-08140-91 | 112-08418-01 |
| 10 | 60 | Standard | F1 | 612-05352-06 | 112-08308-08 | 212-04579-91 | 412-01520-02 | 212-08140-91 | 112-08418-01 |
| 10 | 60 | Standard | F2 | 612-05352-05 | 112-08308-07 | 212-04579-91 | 412-01520-02 | 212-08140-91 | 112-08418-01 |
| 10 | 50 | Standard | F1 | 612-05352-08 | 112-08308-06 | 212-04579-91 | 412-01520-02 | 212-08140-91 | 112-08418-02 |
| 10 | 50 | Standard | F2 | 612-05352-07 | 112-08308-05 | 212-04579-91 | 412-01520-02 | 212-08140-91 | 112-08418-02 |
| 8 | 50 | Standard | F1 | 612-05352-08 | 112-08308-06 | 212-04579-91 | 412-01520-02 | 212-08140-91 | 112-08418-02 |
| 8 | 50 | Standard | F2 | 612-05352-07 | 112-08308-05 | 212-04579-91 | 412-01520-02 | 212-08140-91 | 112-08418-02 |



Pinion & Bushing (Tilt Mixer Drives Only)

| Part Number | Description |
|--------------|-------------------------|
| 412-01520-02 | Tilt Mixer Drive Pinion |
| 212-08140-91 | Bushing, 3½" Bore |
| 212-08144-91 | Bushing, 4" Bore |

Mixer Drive Frame Alteration Kit

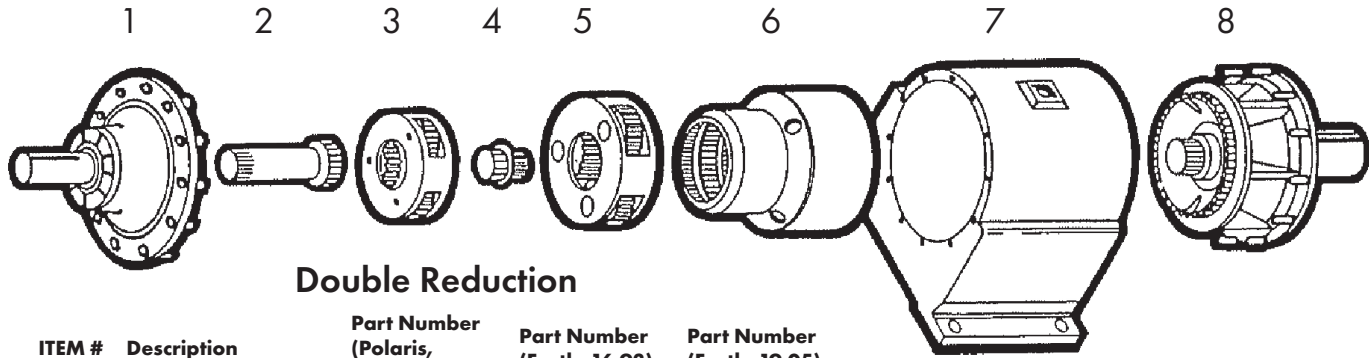
| Part Number | Qty | Description |
|-------------|-----|----------------------------------|
| D2H-33-286 | 1 | Mixer Drive Frame Alteration Kit |

*One kit completes both drive frames



Omega Coupling (Tilt Mixer Drives Only)

| Size | Assembly Part Number | Insert Part Number | Motor Hub Part Number | Reducer Hub Part Number |
|------|----------------------|--------------------|-----------------------|-------------------------|
| E30 | 112-08418-01 | 112-08418-10 | 112-08418-05 | 112-08418-06 |
| E30 | 112-08418-02 | 112-08418-10 | 112-08418-06 | 112-08418-06 |
| E40 | 112-08418-04 | 112-08418-11 | 112-08418-09 | 112-08418-08 |



| ITEM # | Description | Part Number (Polaris, 16.93) | Part Number (Earth, 16.93) | Part Number (Earth, 19.05) |
|--------|----------------------|------------------------------------|-------------------------------|-------------------------------|
| 1 | Input Sub-Assembly | 212-05643-68 | 212-05643-68 | 212-05643-68 |
| 2 | Input Gear | 212-05637-68 | 212-05653-68 | 212-05662-68 |
| 3 | Carrier Sub-Assembly | 212-05638-68 | 212-05654-68 | 212-05659-68 |
| 4 | Sun Gear | 212-05639-68 | 212-05655-68 | 212-05661-68 |
| 5 | Carrier Sub-Assembly | 212-05640-68 | 212-05656-68 | 212-05660-68 |
| 6 | Ring Gear | 212-05641-68 | 212-05657-68 | 212-05641-68 |
| 7 | Main Case | - | - | - |
| 8 | Output Sub-Assembly | 212-05645-68 | 212-05644-68 | 212-05644-68 |

Input Assembly

(All Rexnord Reducers)

| Part Number | Description |
|--------------|---------------------|
| 212-05626-68 | Input Shaft |
| 212-03013-68 | Outer Seal |
| 212-03014-68 | Inner Seal |
| 212-05627-68 | Input Seal Carrier |
| 212-03024-68 | Bearing Cone, Outer |
| 212-03023-68 | Bearing Cup, Outer |
| 212-03019-68 | Bearing Cone, Inner |
| 212-03020-68 | Bearing Cup, Inner |
| 212-05628-68 | Input Spacer |
| 212-05629-68 | Input Washer |
| 212-05630-68 | Input Nut |

Reducer

(Tilt Mixer Drives Only)

| Part Number | Description | Motor Size |
|----------------|---------------------------|------------|
| 212-04584-91 | Polaris, 16.93 | 125hp |
| 212-04580-91 | Earth, 16.93 | 100hp |
| 212-04579-91 | Earth, 19.05 | 60hp, 50hp |
| 212-04579-EFAN | Fan, Earth | |
| 212-04584-PFAN | Fan, Polaris | |
| 212-04579-EFS | Fan & Shroud Kit, Earth | |
| 212-04584-PFS | Fan & Shroud Kit, Polaris | |



Output Assembly

| Description | Part Number (Polaris) | Part Number (All Earth Reducers) |
|---------------------|--------------------------|-------------------------------------|
| Output Shaft | 212-05646-68 | 212-05632-68 |
| Outer Seal | 212-05624-68 | 212-03016-68 |
| Inner Seal | 212-05623-68 | 212-03015-68 |
| Output Seal Carrier | 212-05651-68 | 212-05635-68 |
| Bearing Cone, Outer | 212-00279-68 | 212-03021-68 |
| Bearing Cup, Outer | 212-00280-68 | 212-03022-68 |
| Bearing Cone, Inner | 212-00277-02 | 212-03017-68 |
| Bearing Cup, Inner | 212-00278-68 | 212-03018-68 |
| Retaining Ring | 212-05646-68 | 212-05632-68 |
| Output Washer | 212-05648-68 | 212-05642-68 |
| Output Nut | 212-05647-68 | 212-05633-68 |

Standard Drive Motors

(Tilt Mixer Drives Only)

| Part Number | HP | RPM | Electrical | F1/F2 |
|--------------|-----|------|--------------|-------|
| 112-08308-05 | 50 | 1800 | 230/460/3/60 | F2 |
| 112-08308-06 | 50 | 1800 | 230/460/3/60 | F1 |
| 112-08308-07 | 60 | 1800 | 230/460/3/60 | F2 |
| 112-08308-08 | 60 | 1800 | 230/460/3/60 | F1 |
| 112-08308-09 | 100 | 1800 | 230/460/3/60 | F2 |
| 112-08308-10 | 100 | 1800 | 230/460/3/60 | F1 |
| 212-00254-20 | 125 | 1800 | 230/460/3/60 | F2 |
| 212-00253-20 | 125 | 1800 | 230/460/3/60 | F1 |



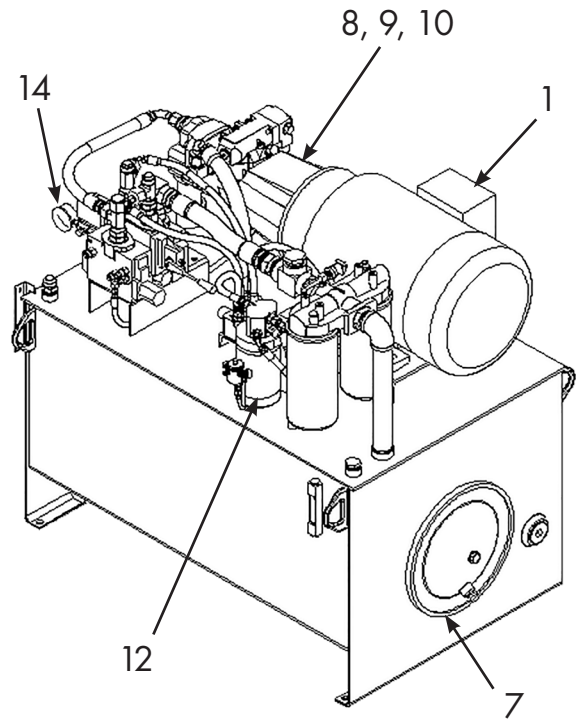
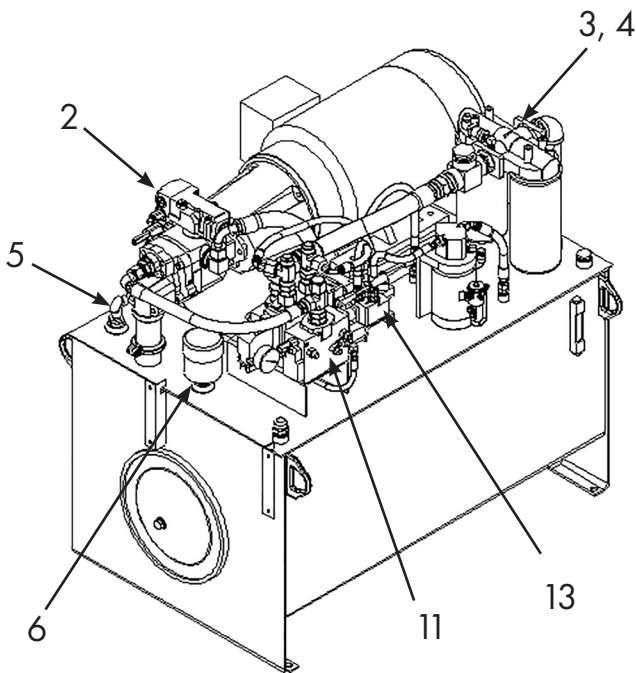
Powerful, Fast, Reliable.....

Astec's hydraulic system is rated for 3,000 psi. With our variable speed technology, it is sure to handle all your batching needs. From paving to ready mix to transit mix and everything in between.

Hydraulic Pac

| Item # | Part Number | Description |
|--------|---------------|---------------------------------------|
| | 114-12224-400 | Hydraulic Pac Service Assembly, 30gpm |
| | 114-12224-JMG | Hydraulic Pac Assembly, 30gpm |
| | 114-12225-02 | Hydraulic Pac Assembly, 45gpm |
| 1 | 114-12224-13 | Motor, 30hp |
| 2 | 114-12224-18 | Pump, 33gpm |
| 2 | 114-12224-45 | Pump, 45gpm |
| 3 | 114-12224-22 | Filter Head |
| 4 | 112-05125-99 | Filter |
| 5 | 114-12224-55 | Temperature Switch Assembly |
| 6 | 114-12224-25 | Dessicant Breather |

| Item # | Part Number | Description |
|--------|--------------|---------------------------------|
| 7 | 114-12224-79 | Clean Out Gasket, 14" |
| 7 | 112-05125-91 | Clean Out Gasket, 16" |
| 8 | 114-12224-14 | Hub, 17/8 |
| 9 | 114-12224-15 | Hub, 1" |
| 10 | 114-12224-16 | Flexible Insert |
| 11 | 112-05125-56 | Control Valve |
| | 112-05125-66 | Replacement Coil, Control Valve |
| 12 | 114-12224-23 | Emergency Tilt Pump/Motor |
| 13 | 114-12224-28 | Emergency Tilt Valve |
| 14 | 114-12224-20 | Pressure Gauge, 3,000psi |





Hydraulic Lift Cylinder (Tilt Mixer Only)

| Part Number | Description |
|--------------|----------------------|
| 112-05124-02 | 6" X 19½" |
| 112-05124-52 | Seal Kit, 6" X 19½" |
| 102-08171-02 | 7½" X 19½" |
| 102-08171-52 | Seal Kit, 7½" X 19½" |
| 298-06800-08 | Spherical Bearing |
| 298-07518-34 | Snap Ring |

Which hydraulic system is on your batch plant?

Older hydraulic systems operate 300-1800 psi. These systems will have a holding valve on the bottom port of each tilt mixer lift cylinder.

The newer high pressure systems have one holding valve and one counterbalance valve on one cylinder. See the table below for the proper valves.

Still have questions?

Give us a call and we can assist you with the correct part.
262.539.4050

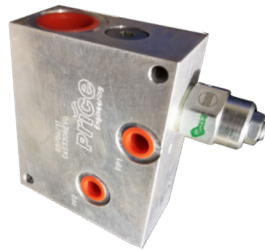


Cylinder Mounting Pins (Tilt Mixer Only)

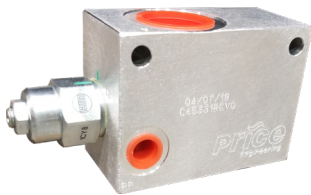
| Part Number | Description |
|--------------|----------------------------|
| 502-03882-80 | Mounting Pin, 15" (Bottom) |
| 502-03882-81 | Mounting Pin, 12" (Upper) |



Holding Valve
(Old Style)



Holding Valve, Lower
(New Style)



Counterbalance Valve, Upper
(New Style)

Holding Valves

| Part Number | Description |
|--------------|--------------------------------------|
| 212-11086-53 | Holding Valve (High Pressure) |
| 212-11095-53 | Counterbalance Valve (High Pressure) |
| 212-00233-53 | Holding Valve (Low Pressure) |



Tilt Frame Lock Pin

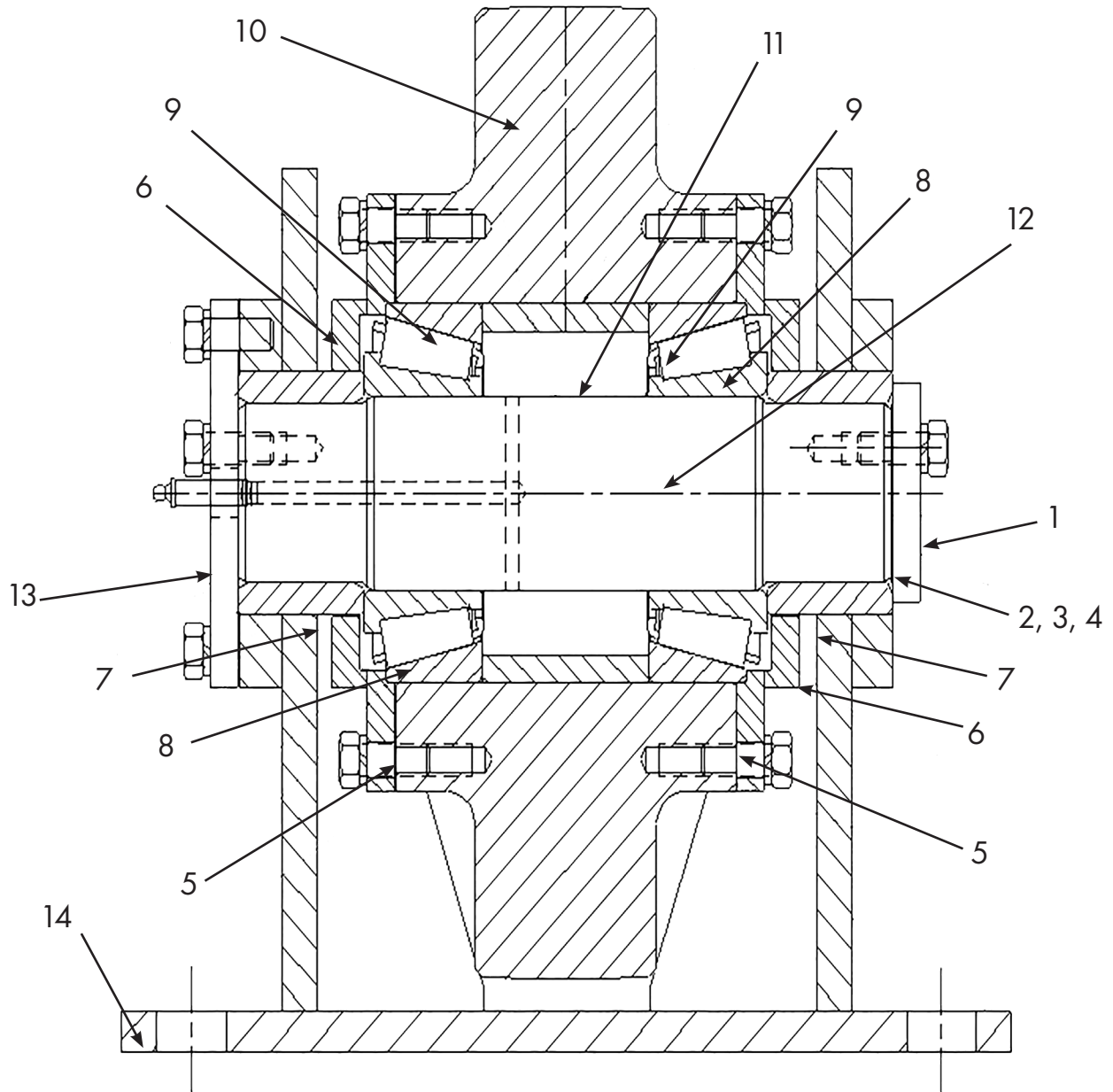
| Part Number | Description |
|--------------|-------------------|
| 644-15134-03 | Lock Pin Assembly |
| 524-14646-80 | Lock Pin |

Main Roller

| ITEM # | Part Number | Qty | Description |
|--------|---------------|-----------|--|
| | 602-04956-03 | | Main Roller Assembly |
| | 602-04956-400 | 1 | Main Roller Rebuild Kit (Less Roller & Support) |
| 1 | 102-06236-01 | 1 | End Plate |
| 2 | 298-10006-02 | As Needed | Shim, .005 |
| 3 | 298-10007-02 | As Needed | Shim, .007 |
| 4 | 298-10008-02 | As Needed | Shim, .020 |
| 5 | 102-06297-01 | 2 | Gasket |
| 6 | 502-02129-80 | 2 | End Cap |

Main Roller

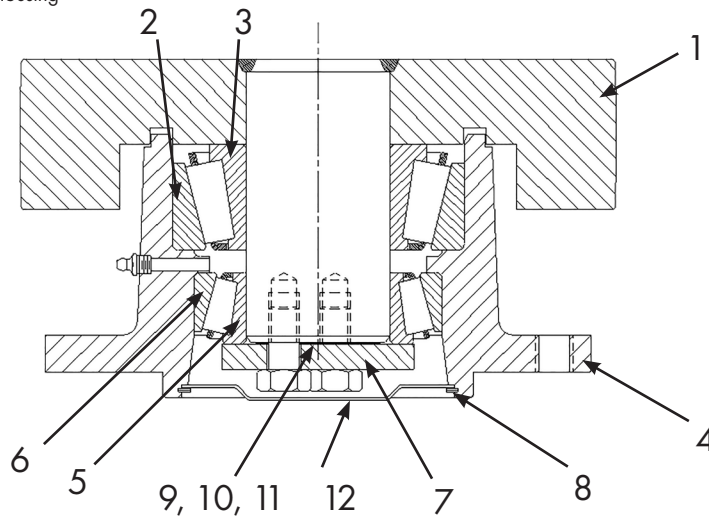
| ITEM # | Part Number | Qty | Description |
|--------|--------------|-----|---------------|
| 7 | 102-06154-01 | 2 | End Spacer |
| 8 | 298-00195-02 | 2 | Bearing Cone |
| 9 | 298-00144-02 | 2 | Bearing Cup |
| 10 | 402-01630-04 | 1 | Main Roller |
| 11 | 102-06298-01 | 1 | Center Spacer |
| 12 | 102-02994-01 | 1 | Shaft |
| 13 | 102-02993-01 | 1 | End Plate |
| 14 | 502-05626-80 | 1 | Support |



1 3/4" & 3" Edge Roller

| Item # | Part Number | Qty | Description |
|--------|---------------|-----|---|
| | 612-05274-02 | | Edge Roller Assembly, 1 3/4" |
| | 612-05274-400 | | Rebuild Kit, 1 3/4" (Less Roller & Housing) |
| | 602-11213-01 | | Edge Roller Assembly, 3" |
| | 602-11213-400 | | Rebuild Kit, 3" (Less Roller & Housing) |
| 1 | 512-06742-80 | 1 | Edge Roller, 1 3/4" |
| 1 | 502-09194-80 | 1 | Edge Roller, 3" |
| 2 | 298-00186-02 | 1 | Bearing Cone |
| 3 | 298-00144-02 | 1 | Bearing Cup |
| 4 | 412-02505-02 | 1 | Housing |

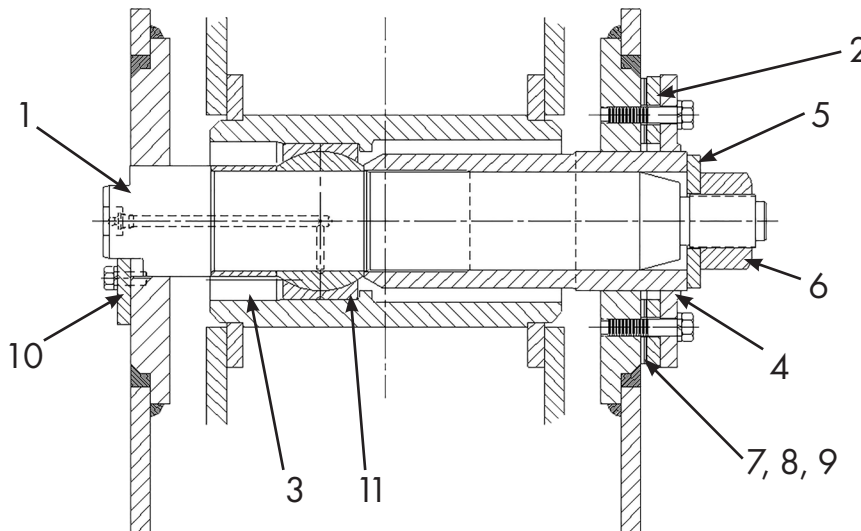
| Item # | Part Number | Qty | Description |
|--------|--------------|-----------|-----------------|
| 5 | 298-00144-02 | 1 | Bearing Cup |
| 6 | 298-00185-02 | 1 | Bearing Cone |
| 7 | 112-08282-01 | 1 | Retaining Plate |
| 8 | 298-07510-34 | 1 | Snap Ring |
| 9 | 112-10147-01 | As Needed | Shim, .005 |
| 10 | 112-10147-02 | As Needed | Shim, .007 |
| 11 | 112-10147-03 | As Needed | Shim, .020 |
| 12 | 112-10146-01 | 1 | Dust Cover |



Tilt Pin Assembly

| Item # | Part Number | Qty | Description |
|--------|--------------|-----|-----------------------|
| | 602-04919-06 | | Tilt Pin Assembly Kit |
| 1 | 102-04287-01 | 1 | Tilt Pin |
| 2 | 102-06359-02 | 1 | Shim |
| 3 | 102-06358-01 | 1 | Spacer |
| 4 | 502-03883-80 | 1 | Flanged Sleeve |
| 5 | 102-00634-01 | 1 | Washer |

| Item # | Part Number | Qty | Description |
|--------|--------------|-----------|-------------------|
| 6 | 102-09094-01 | 1 | Special Nut |
| 7 | 102-02281-01 | As Needed | Shim, 10 ga. |
| 8 | 102-02281-02 | As Needed | Shim 16 ga. |
| 9 | 102-02281-03 | As Needed | Shim, 22 ga. |
| 10 | 102-00631-01 | 1 | Keeper Plate |
| 11 | 298-06802-08 | 1 | Spherical Bearing |





Tilt Speed Control

| Part Number | Description |
|--------------|--|
| 60-66489-01 | Tilt Speed Control Assembly (Table Top) |
| 60-66424-01 | Tilt Speed Control Assembly (Wall Mount) |
| 20-14083-17 | Tilt Speed Control Board |
| 298-16019-17 | Potentiometer |
| 298-00115-17 | Knob, Potentiometer |
| 20-23096-17 | Power Supply |
| 298-12035-17 | Lens, Green |
| 298-12033-17 | Light Socket |
| 298-12041-17 | LED Bulb, White |

Mixer Junction Box

| Part Number | Description |
|--------------|-------------------------------|
| 60-66304-01 | Mixer Junction Box |
| 298-06152-17 | Button, Emergency Stop |
| 298-06013-17 | Contact Block, Emergency Stop |
| 298-00138-17 | Horn |
| 20-00516-17 | Horn Gasket |



Limit Switch

| Part Number | Description |
|--------------|-------------------|
| 298-06568-17 | Limit Switch |
| 212-00029-17 | Arm, Limit Switch |

It is imperative that the proper fluids are used on your tilt mixer.

Tilt Mixer Fluid Chart

| Part | Fluid |
|-----------------------|------------------|
| Rollers | Mobilith SHC 100 |
| Tilt Pin | Mobilith SHC 100 |
| Cylinder Pin | Mobilith SHC 100 |
| Tilt Cylinder Bushing | Mobilith SHC 100 |
| Drive Reducer | Mobile SHC 629 |
| Ring Gear | Mobiltac 375 |
| Hydraulic Pac Fluid | Mobile DTE 26 |



Auto Lube System

| Part Number | Description |
|---------------|-------------------------------|
| 644-14318-03 | Auto Lube Assembly (Complete) |
| 114-14243-400 | Auto Lube Maintenance Kit |
| 401F | Pump w/ Reservoir |

Call our parts department for individual grease system parts.
(262) 539-4050



Drip Oiler

| Part Number | Description |
|-----------------|----------------------|
| 644-14944-01 | Drip Oiler Assembly |
| 212-11164-53 | Drip Oiler |
| 212-11164-53-01 | Coil |
| 212-1116453-02 | Sight Glass Assembly |

Extend the life of your drum's Ring Gear!!!

We offer a ring gear greasing kit to help extend the life of your ring gear and pinions. The kit includes a 5 gallon bucket of Mobilvac 375, a 5 gallon bucket pump, timer, grease manifold, hoses and a print for easy installation.



Ring Gear Self Lubricator

| Part Number | Description |
|---------------|--------------------------------|
| 644-15758-400 | Ring Gear Self Lubricating Kit |
| 114-15757-01 | Pump with Hoses |
| 60-66541-01 | Timer |
| 524-15759-80 | Grease Manifold |



ASTEC[™]

www.astecindustries.com