



# Mixing Technologies

## Range of Products





## The History of MAP

*Under the MAP brand, established in 1983 near Modena in northern Italy, WAMGROUP™ specializes in the design, manufacture and distribution of industrial mixers for use in many different applications and sectors.*

*With continued growth and the demand for global competitiveness, MAP has moved beyond Italy with its expanding production line to the United States.*

*This new production line as well as a lab where customers can bring their products to test the performance of MAP mixers, is located at the WAMGROUP™'s already existing 90,000 sq ft facility in Fort Worth, Texas.*

*Since the early 1980s MAP has supplied more than 4,500 mixers to industries all over the world. The company's know-how has been collected through field experience and extensive testing carried out in labs around the world.*

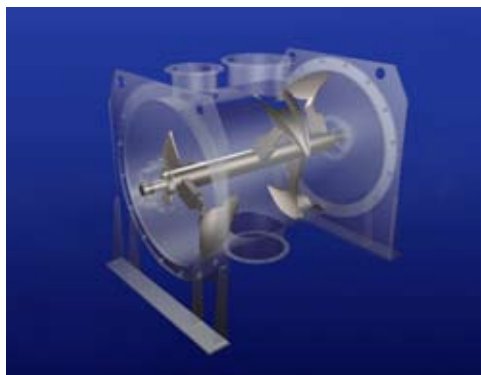
*MAP offers a wide range of different machines and a variety of accessories to best serve the unique requirements of each mixing application. You will find MAP mixers in nearly every sector where mainly dry components have to be mixed, blended, humidified, agglomerated, crumbled or conditioned.*

*Below are a few examples:*

- *Food Industry: cereals, herbs and spices, baking ingredients, fibers, coffee, tea, stuffing, grain, stabilizers, vitamins, health ingredients.*
- *Animal feed: mash, meal, muesli, dietary and health products.*
- *Chemicals: polypropylene, color mixing, bath salts, rubber, coal, plastics, detergents, fertilizers.*
- *Building industry: dry mortar, tile filler, glass, cement, concrete additives, polystyrene.*
- *Environmental technology: waste, wet and dry sludge, biomass, contaminated earth, foundry sands and dust.*

*Staffed with decades of experience in mixer applications of all kinds, MAP can provide the appropriate backup for the American customer base from all those industries where MAP mixers are the most suitable choice for the process.*





## WBH

### Batch-Type Intensive Mixer

- Mixing tools as plows or paddles
- Capacities from 2.6 cuft - 530 cuft per batch
- Large variety of accessories

Serves the widest range in fields of applications

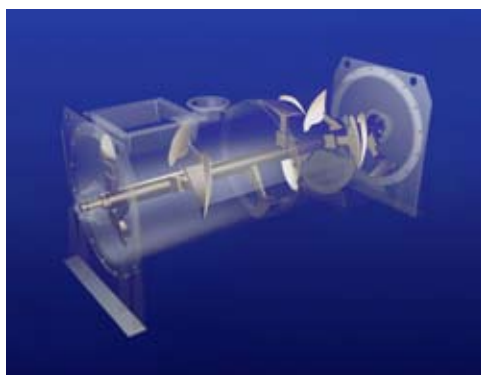
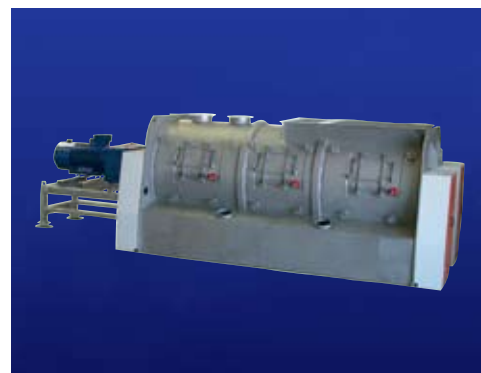


## WBT

### Batch-Type Intensive Mixer with discharge opening over its complete length called bomb bay discharge

- Mixing tools as plows or paddles
- Capacities from 2.6 cuft - 530 cuft per batch

Large variety of accessories

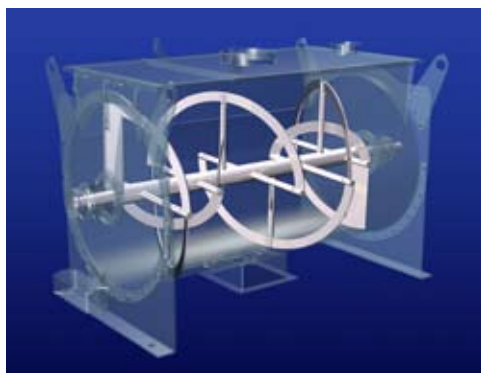


## WAH

### Continuous Type Plowshare Mixer

- Capacities from 70 cuft - 16,000 cuft per hour
- Large variety of accessories

Quick and homogeneous, ambitious mixing

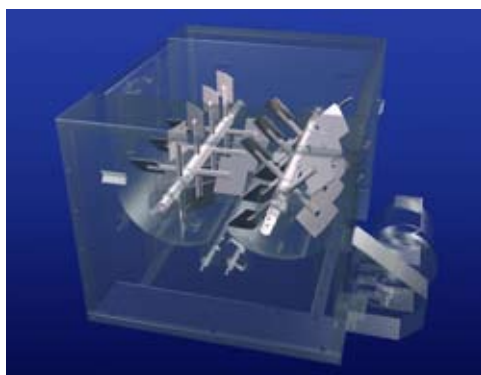


## WBN

### Batch-Type Ribbon Blender

- Capacities from 2.6 cuft - 530 cuft per hour
- Slow and smooth mixing

Tubular Mixing Chamber



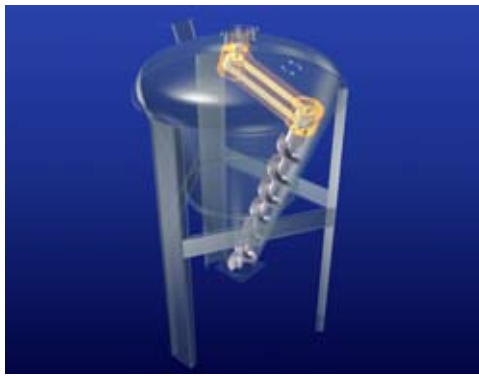
## WTS

### Batch-Type Twin Shaft Paddle Mixer

- Capacities from 4 cuft - 140 cuft

Very quick and smooth mixing



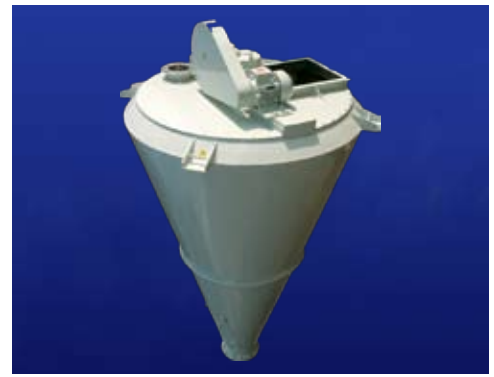


## VSM

### Batch-Type Conical Screw Mixer

- Capacities from 3.5 cuft - 176 cuft
- Also used for material storage

Slow and smooth mixing

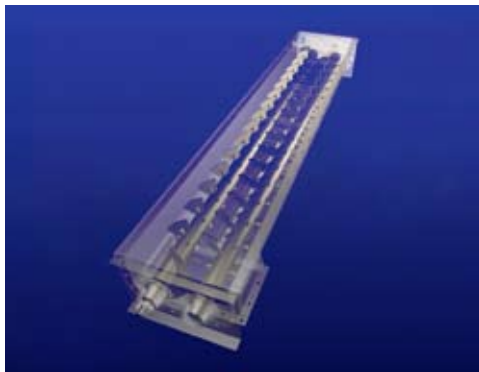


## MLH

### Laboratory Mixer

- Capacities as 0.21 and 0.42 cuft per batch
- Interchangeable mixing drum and mixing tools
- Emptying by turning drum upside down

Frequency converter-controlled

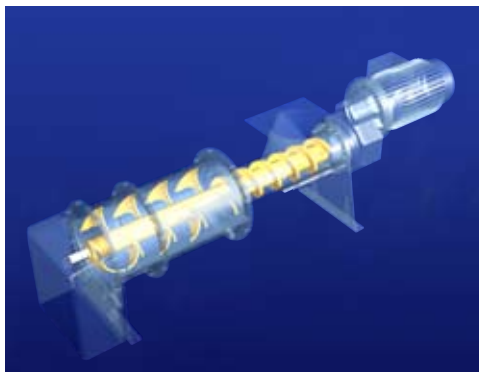


## MESC

### Continuous Twin-Shaft Paddle Mixer

- Capacities from 105 cuft to 2,500 cuft per hour

Mixer and conveyor combined in one machine

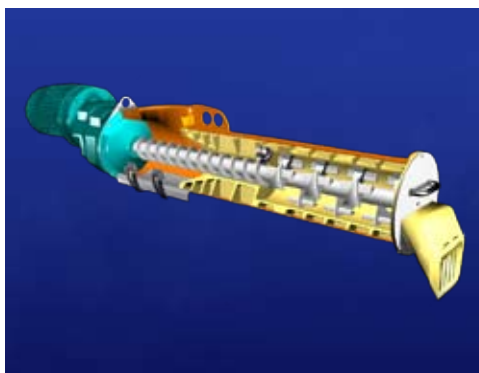
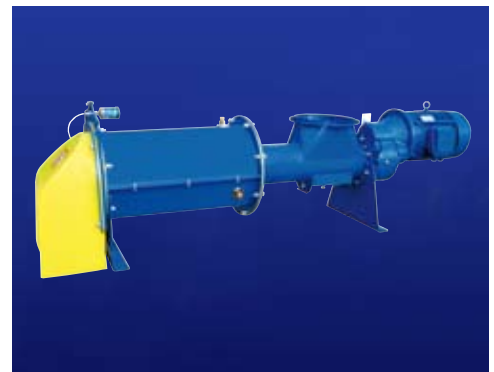


## DUSTFIX

### Continuous Dust Conditioner

- Capacities from 350 - 1,400 cuft per hour
- Combination of screw feeder and mixer

Can be installed directly beneath a silo or material storage.



## WETDUST + CLAYGRAN

### Continuous Dust Conditioner

- Capacities from 17 - 170 cuft per hour
- Combination of screw feeder and mixer

Quick, penetrating mixing of a variety of dusts (also abrasives). Can be installed directly beneath a silo.





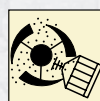
# The right mixer for each application



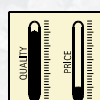
**Mixing and blending of solids**  
Reliably repeatable mixing quality



**Treatment of solids with liquids**  
Agglomeration and granulation

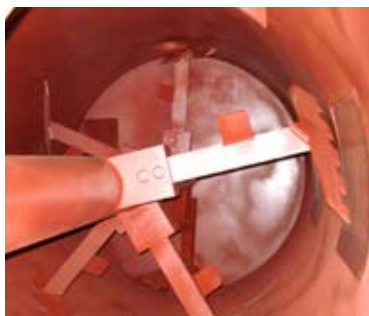


**Crumbling and decomposition**  
Wide range of accessories



**High quality**  
**Low maintenance**  
**Low cost**

									
		WBH	WAH	WBN	WTS	VSM	MESC	DUSTFIX	WETDUST CLAYGRAN
<b>BUILDING MATERIALS</b>		✓	✓				✓	✓	✓
<b>CERAMIC DUST</b>		✓	✓				✓	✓	✓
<b>SLUDGE</b>		✓	✓				✓		
<b>FOODSTUFFS</b>		✓	✓	✓	✓	✓			
<b>ANIMAL FEED</b>		✓	✓	✓	✓	✓			
<b>CHEMICALS</b>		✓	✓	✓	✓	✓			
<b>PHARMACEUTICAL PRODUCTS</b>		✓		✓	✓	✓			
<b>FOUNDRIES</b>		✓	✓				✓	✓	✓



## MAP Mixing Technologies



MAP

WAM Inc.  
1300 Triad Blvd.  
Fort Worth, TX 76131

Tel. 1-817-232-2678  
Fax 1-817-232-2676

[info@mapmixers.com](mailto:info@mapmixers.com)  
[www.mapmixers.com](http://www.mapmixers.com)  
[www.waminc.com](http://www.waminc.com)