

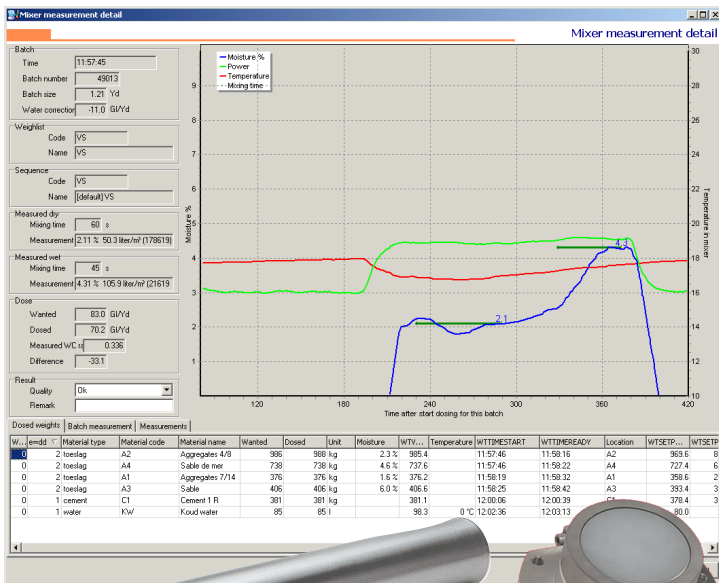


COMMANDbatch CP



Precast, Prestressed and Manufactured Concrete Products

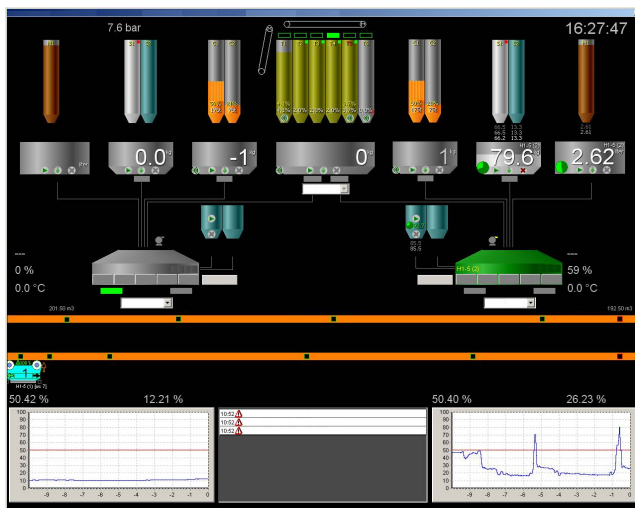
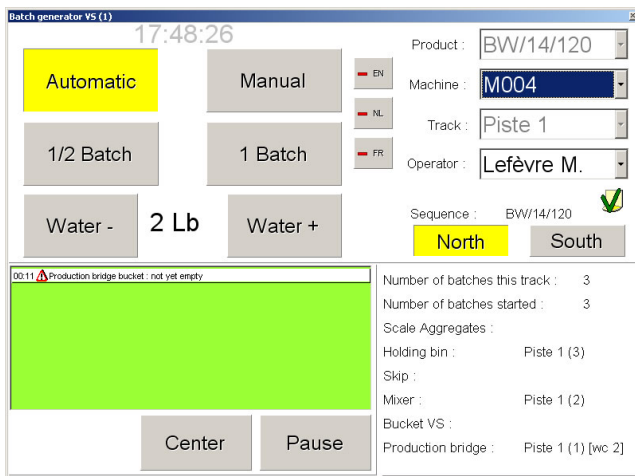
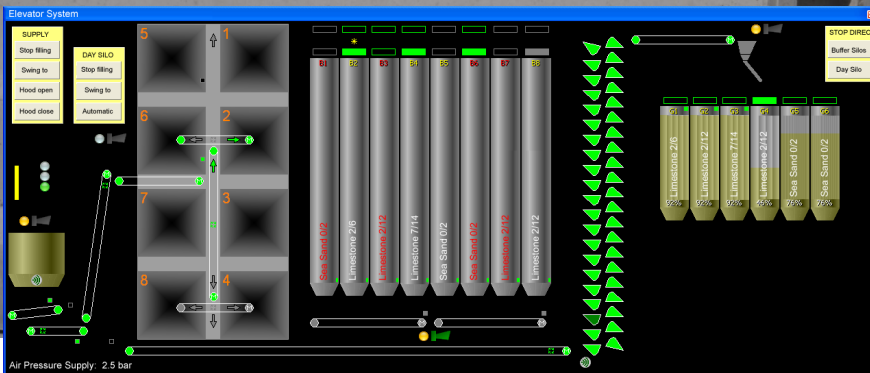
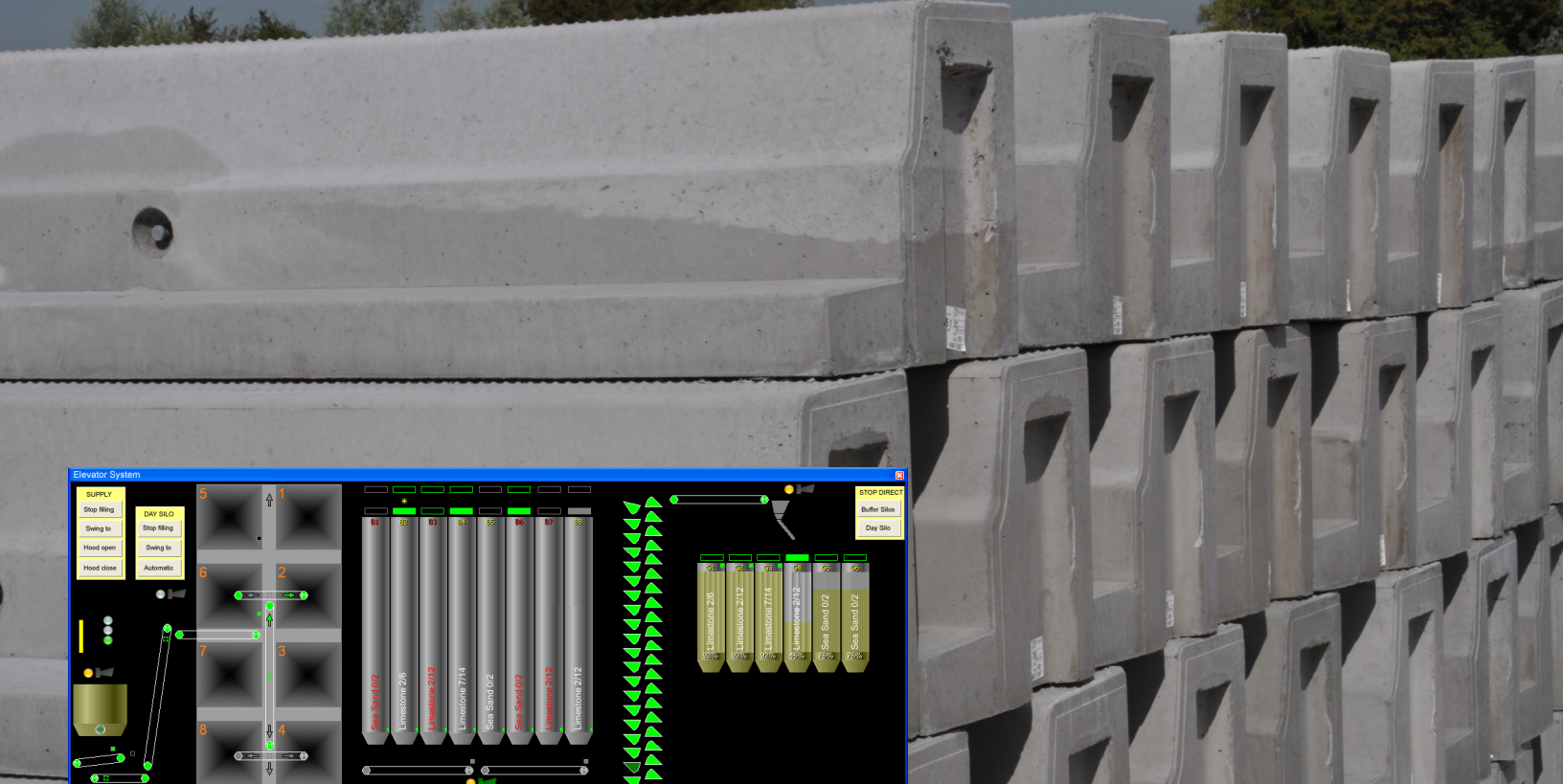
COMMANDbatch CP offers comprehensive, intelligent and flexible process control, based on over 40 years of experience in the automation of concrete production plants. The system is fully compatible with standard concrete production equipment and delivers quality, accurate batching as well as accelerated production capabilities.



Control all of the Moistures in your products

Whether you are producing Zero Slump Concrete or SCC Concrete, COMMANDbatch CP provides quality moisture monitoring and water dosage to help you get control of your quality and costs.





COMMANDbatch CP

for comprehensive control and automation.

SCC Moisture Control - Maintain the proper mix proportions by measuring both fine and coarse aggregate moistures in real-time. Introduce plasticizer additives precisely to delivery consistent SCC Spreads.

Dry Cast Moisture Control - Dynamically adjust the water to meet the specified properties of any mix.

Color Control - Produce and reproduce consistent architectural products. Adjust water and dose color accurately to reduce wasteful color errors. Maintain accurate batch records including color recipes.

Concrete Delivery Automation - Control and prioritize delivery buckets and placement cranes using plant floor remote wireless controllers. Automate routing pouring of hollow core or prestressed beds.

Automatic Inventory Replenishment Requests - Automatically email suppliers and inventory managers based on silo or aggregate bin levels.

Process Visualization - Clear and ergonomic visualization of your entire process. Comprehensive displays and reports that are easily exported to Excel.