



DHE INC. CONCRETE EQUIPMENT / NOBLE Concrete Plants 1.800.4DHEINC.

# Equipment. Rentals. Parts. Service.



www.dhenoble.com

Providing performance based equipment for the Concrete & Aggregate Industries Since 1979"

RECLAIMER

FILTRATION

RECYCLE

RE-USE



Concrete Reclaim, Slurry and Water Filtration systems for the

- Ready-Mix & Precast Industry
- Concrete Sawing and Grinding



VISIT OUR FREE CONCRETE BATCHING EQUIPMENT BLOG AT <https://www.dhenoble.com/blog>



## DHE, Inc. - NOBLE Concrete Plants

145 Gandy Dancer Drive  
Tracy, CA 95377  
(800) 4-DHEINC  
E-mail- sales@dhenoble.com

ADDRESS CHANGE REQUESTED



**CON-E-CO CONCRETE BATCH PLANT PARTS**  
1.800.656.2651

**DHE Inc. provides parts and service for:**

CON-E-CO, Erie-Strayer, Ross, Johnson, REXCON, Stephens, Vince Hagan, and Besser-Appco Concrete Batch Plants.

portable plants \* radial stacking conveyors \* precast pan mixers \* precast concrete batch plants



DHE INC. CONCRETE EQUIPMENT / NOBLE Concrete Plants 1.800.4DHEINC.

# Equipment. Rentals. Parts. Service.



www.dhenoble.com

Providing performance based equipment for the Concrete & Aggregate Industries Since 1979"

SILO & GUPPY

SLUMP RACK

USED EQUIP.

PLANTS

Equipment Lines



## CON-E-CO CONCRETE BATCH PLANTS



CON-E-CO Lo-Pro 327 Mobile Portable Concrete Batch Plant. Starting at \$365,000.00



CON-E-CO Lo-Pro 12RS Portable Concrete Batch Plant. As shown \$676,000.00



CON-E-CO BatchMaster with 800 Ton Aggregate Bunker. As shown \$1,600,000.00

## COMMAND-ALKON

Batch Controls  
COMMANDbatch automation for the Ready-Mix, Precast and Material Handling industry



Order Entry / Ticketing  
Networkable / Remote Batch  
Accounting Interface  
Automatic Moisture Controls  
Lease \$670/month

## NOBLE PORTABLE SILO'S



\$49,500 - 370 BBL SILO  
Silo Includes;

- 250 SqFt Silo Dust Collector
- Ladder and Climbing device
- Seismic legs
- High & Low level indicators
- Optional 8", 10", and 12" Cement screws.

concrete batch plants \* batch controls \* mobile concrete batching equipment \* automatic controls



PERMITTING

ENGINEERING

MODIFICATIONS

INSTALLATION

DHE Inc. Provides Plant Retrofits and New Installations



### RAPIDmix RCC/CTB Plants and Mixers



Pan mixer



Twin shaft mixer

### PEARSON PORTABLE HOT AND CHILLED WATER SYSTEMS



Pearson Hot and Cold Water systems manufactures portable and stationary systems capable of handling over 2,000 yards of



concrete per day. The hot/cold water tank can be configured for a Pearson Direct Fire heater with a efficiency rating of 96%. The wool insulated tanks are manufactured on steel skids or trailer which provides a quick installation for existing plant retrofits. The portable or stationary chillers use the latest refrigeration systems from Carrier for a high efficient chiller system.

two

new site installations \* moisture meters \* dust collectors \* cement screws and valves \* concrete reclaimers



### Cement Screws Gates Solenoids Weigh Batchers

PLANT PARTS AND SERVICES  
<https://www.dhenoble.com/parts>



CEMENT SILO

SLUMP RACK

WATER TANKS

HOPPERS

### NOBLE VERTICAL GUPPY



NOBLE VERTICAL GUPPY (SEISMIC under structure) 3,700 CuFt., 148 tons 11'-11" Wide x 52'-0" Long. CON-E-CO PJC-300 SILO collector. High and Low Level indicator (lights by others). Handrail, ladder (no cage) and climbing device. Seismic legs with under structure. Customer responsible to confirm local building code requirements. Includes Transportation system. Price \$96,450.00  
Van feeder \$12,500.00, 50HP blower \$21,500.00  
MCC controls \$5,200.00.

heaters \* chillers \* insulated water tanks \* used equipment \* plant retrofits \* mobile conveyors.

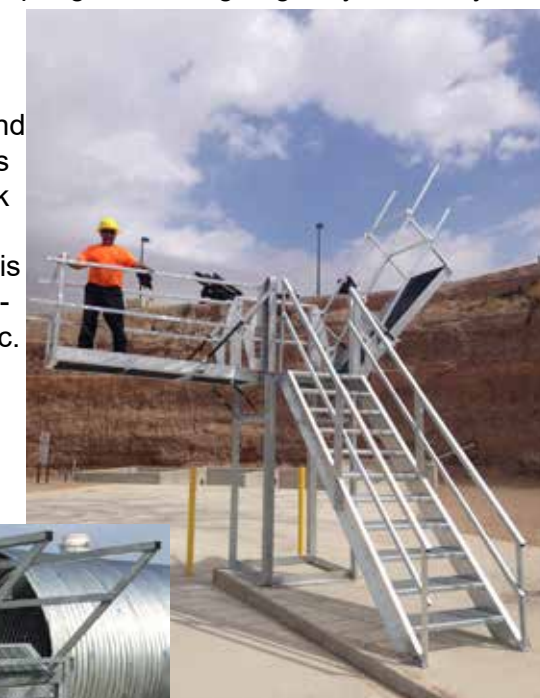
### NOBLE GALVANIZED CONVEYORS

From deep truss to standard channel conveyors, NOBLE manufactures 24", 30", 36", 42" and 48" galvanized conveyor frames and bents. Heavy duty Dodge drives and gear boxes compliment the design and engineering of NOBLE Concrete Batch Plants. Call us today and put over 50 years of NOBLE ingenuity to work on your next project.



### NOBLE SLUMP RACK

Heavy-duty galvanized steel service rack for driver inspection of one mixer truck. Service rack to provide platform 7'-8" tall and includes ONE retrievable spring return hinged gantry. Walkway that extend 7'5" out from the base. One 36" wide OSHA-compliant steel stairway with handrails and Fiberglass non-slip treads and decking. Service rack needs to be located on a level concrete pad and it is advisable to provide curbing to facilitate truck traffic. NOTE: Racks must be properly attached to customer supplied concrete foundation.



three