

CON-E-CO®

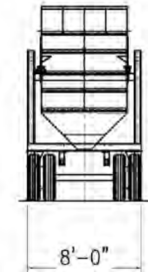
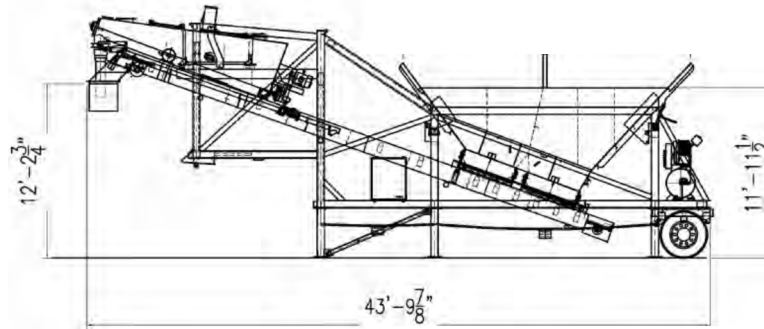
An Astec Industries Company



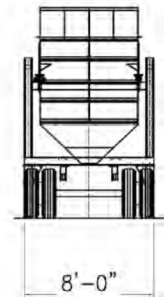
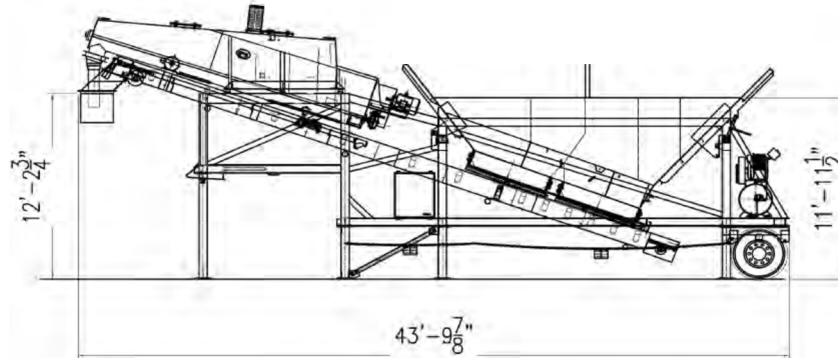
ALL-PRO DECUM

Mobile Batch Plant
5 or 12 yard capacity

ALL-PRO® 5 DECUM



ALL-PRO® 12 DECUM



SPECIFICATIONS

PRODUCTION CAPACITY:

Theoretical Cycle Time - 2.5 to 3 minutes

AGGREGATE WEIGHING CAPACITY:

Aggregate

Model 5—1 to 21 cubic yards (16 cubic meters)

Model 12—1 to 23 cubic yards (17.5 cubic meters)

Cement Batcher

Model 5—1 to 6 cubic yards (4.5 cubic meters)

Model 12—1 to 12 cubic yards (9.2 cubic meters)

Scales—Direct load cells

AGGREGATE DISCHARGE CONVEYOR:

24" wide (762 mm), 10 horsepower drive. Optional

30" (762 mm), 15 horsepower

CEMENT BATCHER RECIRCULATING SCREW:

Model 5—12" diameter (305 mm), 10 horsepower

Model 12—14" diameter (360 mm), 15 horsepower.

HIGH PRESSURE AIR COMPRESSOR:

5 horsepower with 80 gallon (0.30 cubic meters) receiver,

Optional 10 horsepower, 80 gallon (0.30 cubic meters) receiver.

ELECTRICAL:

460 volt, 3-phase with 120 VAC transformer for control voltage. All motors are TEFC. All motor circuit wiring protected by individual circuit breakers. Electrical components housed in NEMA steel enclosures. Wiring in conduit.

BATCH CONTROL SYSTEM:

Semi-automatic cut-off of cement by presets on digital readouts. Push-Button for electric over air on gates. Option-ally fully automatic computerized batch control system.

WATER METER:

3" diameter (77 mm) up to 500 gallons (1,740 liters) per minute.

CEMENT FEEDER SCREW CONVEYOR

6" diameter (152 mm), 10 horsepower drive plus 25'0" (7,620 mm) long, 4' x 4' receiving hopper.

TRANSPORTATION SYSTEM:

Rear-mounted 19,000 lb. (9,090 kg) capacity single axle with four (4) 295/75R 22.5 tires, wheels, air brakes, heavy duty spring suspension, tail and brake lights, and fifth wheel rub plate with king pin.

DIMENSIONS: (plant only, no silo)

Towing length..... 39'-0" (11,888 mm)

Towing height..... 14'-3" (4,343 mm)

Towing width..... 8'-0" (2,440 mm)

Empty weight, total

Model 5.....30,000 lbs. (13,608 kg)

Model 12..... 40,000 lbs. (18,144 kg)

SHIPPING DIMENSIONS: (plant only, no silo)

Length 44'-0" (13,411 mm)

Height

Model 5.....13'-10" (4,216 mm)

Model 12..... 14'-3" (4,343 mm)

Width 8'-0" (2,440 mm)

Shipping Volume

Model 5..... 4,868 cubic feet (137 cubic meters)

Model 12..... 5,016 cubic feet (142 cubic meters)

NOTES:

In accordance with CON-E-CO's policy of constantly improving its products, the above specifications are subject to change without notice. CON-E-CO assumes no responsibility for foundation design. Consult factory for column loadings

237 North 13th Street - Blair, Nebraska 68008 - 402-426-4181 - Fax 402-426-4180 - www.con-e-co.com

sales@con-e-co.com

PROUD MEMBER OF



CON-E-CO®

SOLID PRODUCTS. SOLID PERFORMANCE