

VILLA LUMMA

FINESTRAT

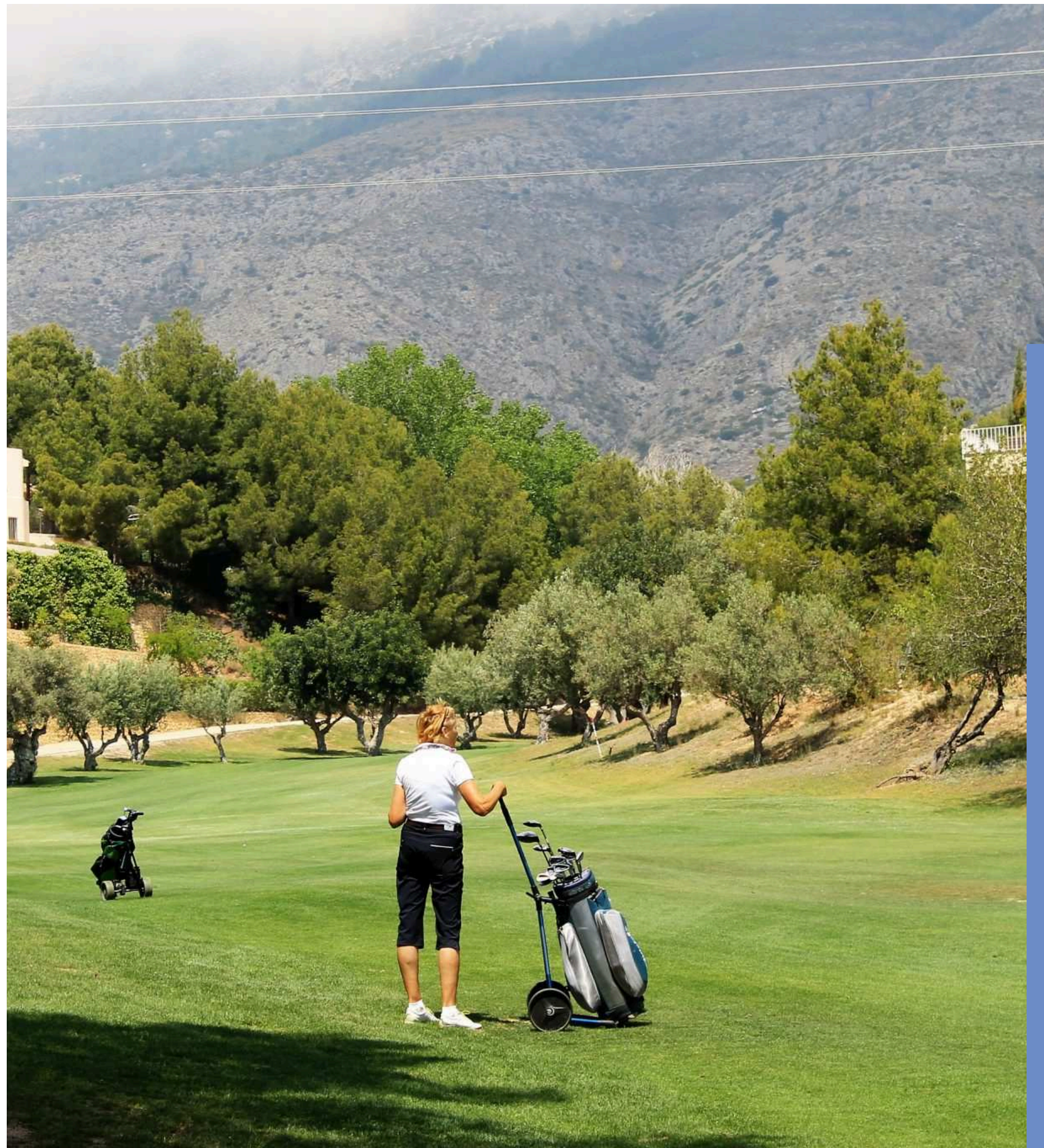


ABOUT THE PROJECT

With stunning sea views from its upper terrace and select rooms, this residence in Finestrat's most prestigious enclave redefines refined living. Conceived with leading international experts, it combines pure lines, natural light, and a graceful openness that elevates everyday life.

Blending European minimalism with Mediterranean serenity, the villa unites privacy with flowing openness. Expansive glazing, soaring ceilings, and seamless indoor-outdoor transitions create an atmosphere of effortless sophistication.





LOCATION:

A RARE BLEND OF PRIVACY, SECURITY, AND EFFORTLESS ACCESS TO THE REGION'S FINEST AMENITIES.

FINESTRAT IS A PRESTIGIOUS HILLSIDE NEIGHBORHOOD, OFFERING SWEEPING VIEWS OF THE MEDITERRANEAN SEA AND SURROUNDING MOUNTAINS.

- Exclusive golf clubs and a private marina
- Renowned international schools such as Elian's British School, Costa Blanca International College, and Colegio Internacional Lope de Vega
- Upscale shopping at La Marina Center with fashion, dining, and leisure
- Supermarkets including Carrefour, Mercadona, Lidl, Aldi within minutes
- Only 40 minutes to Alicante International Airport

BLUE FLAG BEACHES

JUST 10 MINUTES AWAY LIE BENIDORM'S RENOWNED BEACHES — RANKED AMONG THE FINEST IN EUROPE.

THESE PRISTINE COASTAL AREAS ARE PART OF PROTECTED NATURAL RESERVES AND HAVE BEEN RECOGNIZED WITH UNESCO DISTINCTIONS FOR THEIR ECOLOGICAL PURITY AND SUSTAINABLE COASTAL DEVELOPMENT.





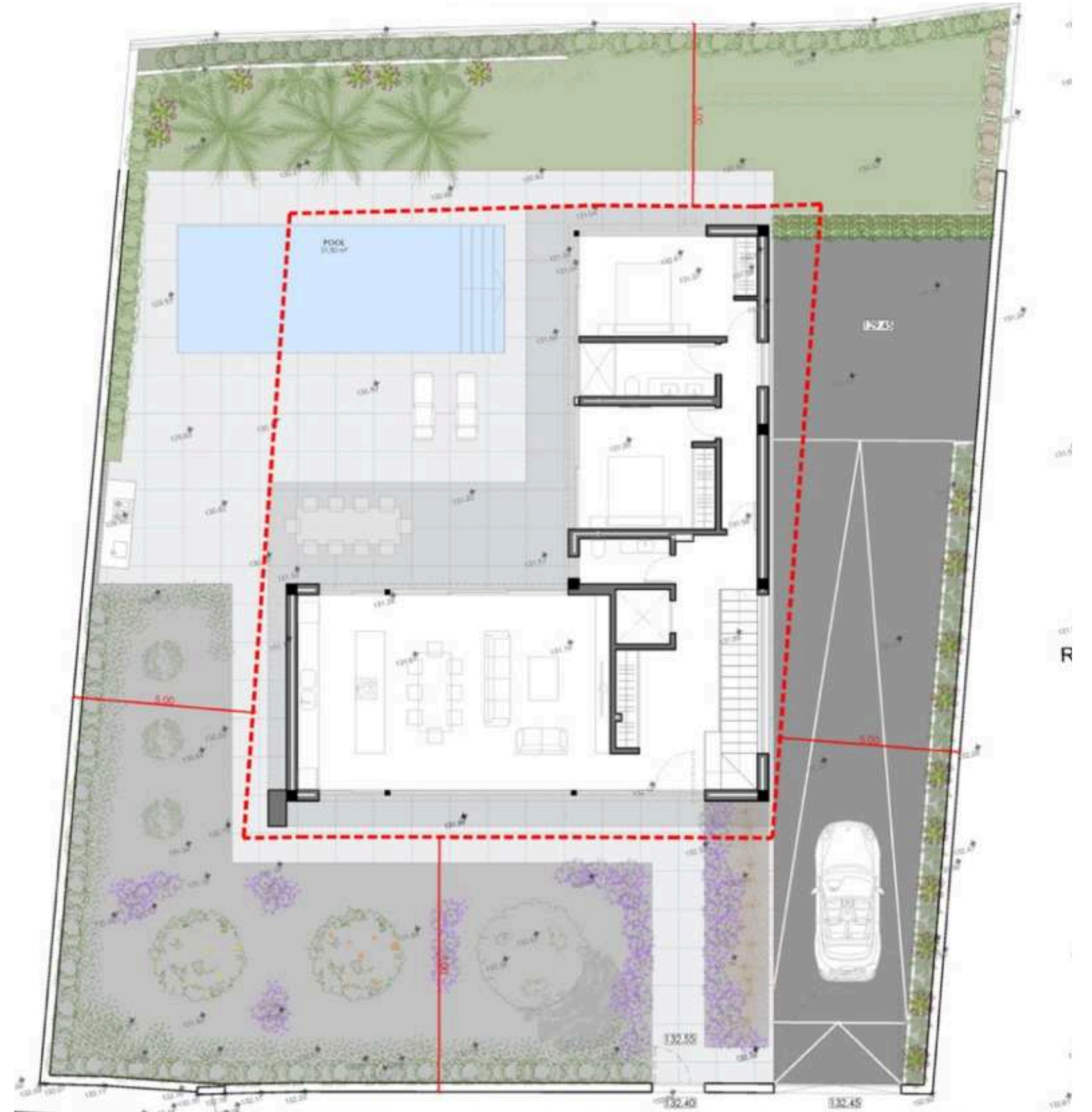
A YEAR-ROUND DESTINATION

The cities along the White Coast offer endless opportunities in every season — not only for beach lovers but also for avid explorers.

In spring and autumn, you can tour ancient castles or visit hidden caves; in summer and winter, indulge in seasonal shopping, experience the vibrant Christmas nougat fair in Jijona, or take the family to the Terra Natura adventure park.

Thanks to its unique climate, the Costa Blanca is one of the few regions in Spain that offers a perfect lifestyle — and leisure — nearly 365 days a year.

PLOT PLAN



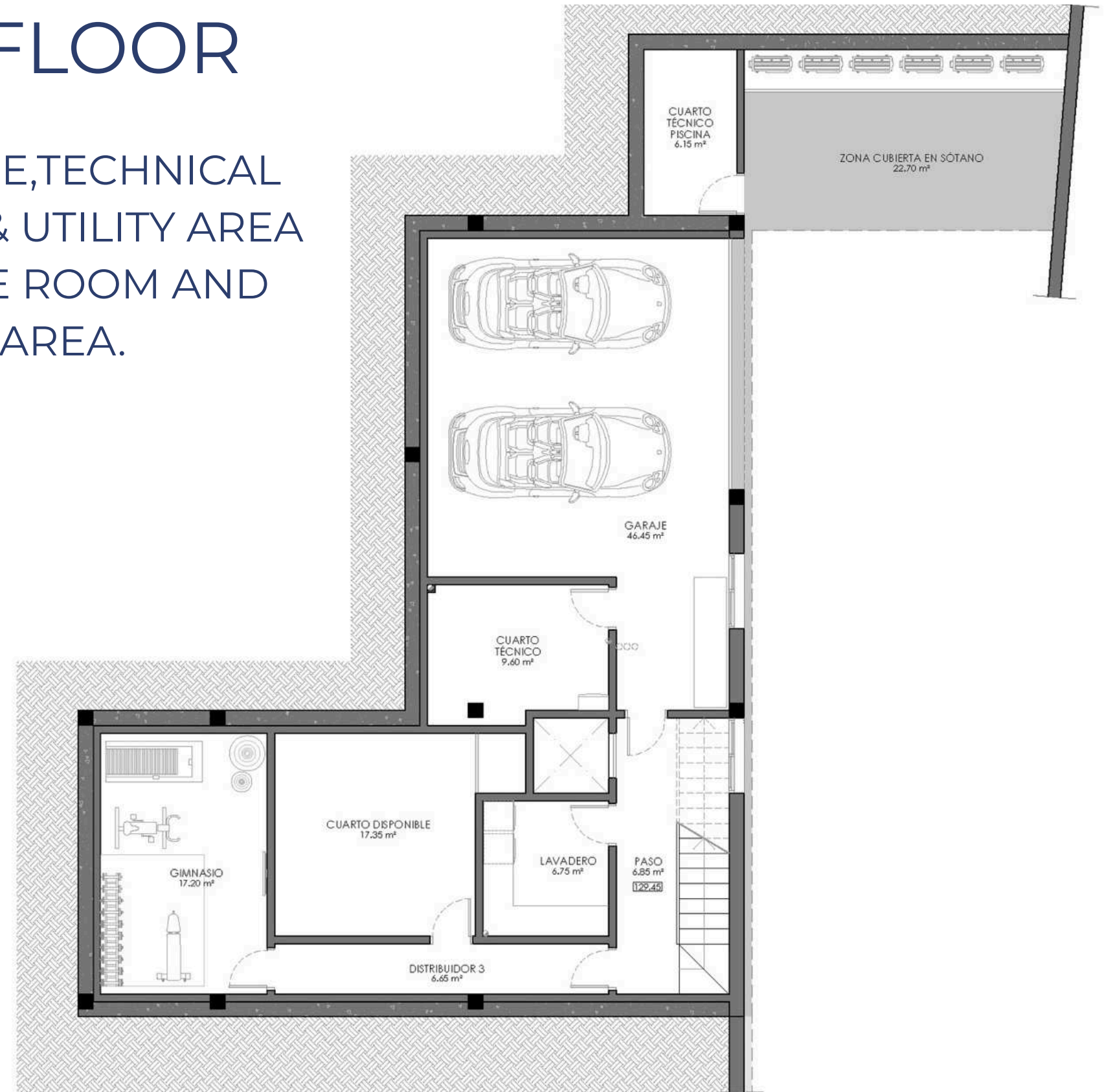
PLANTA SÓTANO

SUP. ÚTILES INTERIORES (m ²)	
VIVIENDA	
GARAJE	46.45
PASO	6.85
DISTRIBUIDOR 3	6.65
CUARTO TÉCNICO	9.60
LAVADERO	6.75
CUARTO DISPONIBLE	17.35
GIMNASIO	17.20
TOTAL ÚTILES INTERIORES VIV.	110.85
CONSTRUCCIONES ANEXAS	
CUARTO TÉCNICO PISCINA	6.15
ZONA CUBIERTA EN SÓTANO	22.70
TOTAL ÚTILES ANEXAS	28.85

SUP. CONSTRUIDA (m ²)	
VIVIENDA	
ÁREA CERRADA P. SÓTANO	145.05
TOTAL CONSTRUIDA VIV.	145.05
CONSTRUCCIONES ANEXAS	
CUARTO TÉCNICO PISCINA	8.30
ZONA CUBIERTA EN SÓTANO	24.65
TOTAL CONSTRUIDA ANEXAS	32.95

LOWER FLOOR

PRIVATE GARAGE, TECHNICAL ROOM, LAUNRY & UTILITY AREA MULTIPURPOSE ROOM AND FITNESS AREA.



PLANTA BAJA

SUP. ÚTILES INTERIORES (m²)

HALL	14.95
SALÓN-COMEDOR-COCINA	46.80
ESCALERA	6.20
ASEO	3.15
DISTRIBUIDOR 1	5.15
DORMITORIO 1	12.65
DORMITORIO 2	13.40
BAÑO 1	5.65
TOTAL ÚTILES INTERIORES	107.95

SUP. ÚTILES EXTERIORES (m²)

PORCHE CUBIERTO	9.40
TERRAZA CUBIERTA	31.80
TOTAL ÚTILES EXTERIORES	41.20

SUP. CONSTRUIDA (m²)

ÁREA CERRADA P.BAJA	130.75
PORCHE CUBIERTO	9.75
TERRAZA CUBIERTA	31.80
TOTAL CONSTRUIDA	172.30

SUP. COMPUTABLE (m²)

ÁREA CERRADA P.BAJA (100%)	130.75
PORCHE CUBIERTO (50%)	4.90
TERRAZA CUBIERTA (50%)	15.90
TOTAL COMPUTABLE	151.55

GROUND FLOOR

LIVING ROOM WITH ADJOINING TERRACE, KITCHEN, HALL, TWO BEDROOMS, AND TWO BATHROOMS



LIVING ROOM AND KITCHEN



TV ZONE



PLANTA ALTA

SUP. ÚTILES INTERIORES (m²)

DISTRIBUIDOR 2	5.40
DORMITORIO 3	13.50
BAÑO 2	4.65
DORMITORIO SUITE	31.15
BAÑO SUITE	11.30
TOTAL ÚTILES INTERIORES	66.00

SUP. ÚTILES EXTERIORES (m²)

TERRAZA DESCUBIERTA	77.20
TOTAL ÚTILES EXTERIORES	77.20

SUP. CONSTRUIDA (m²)

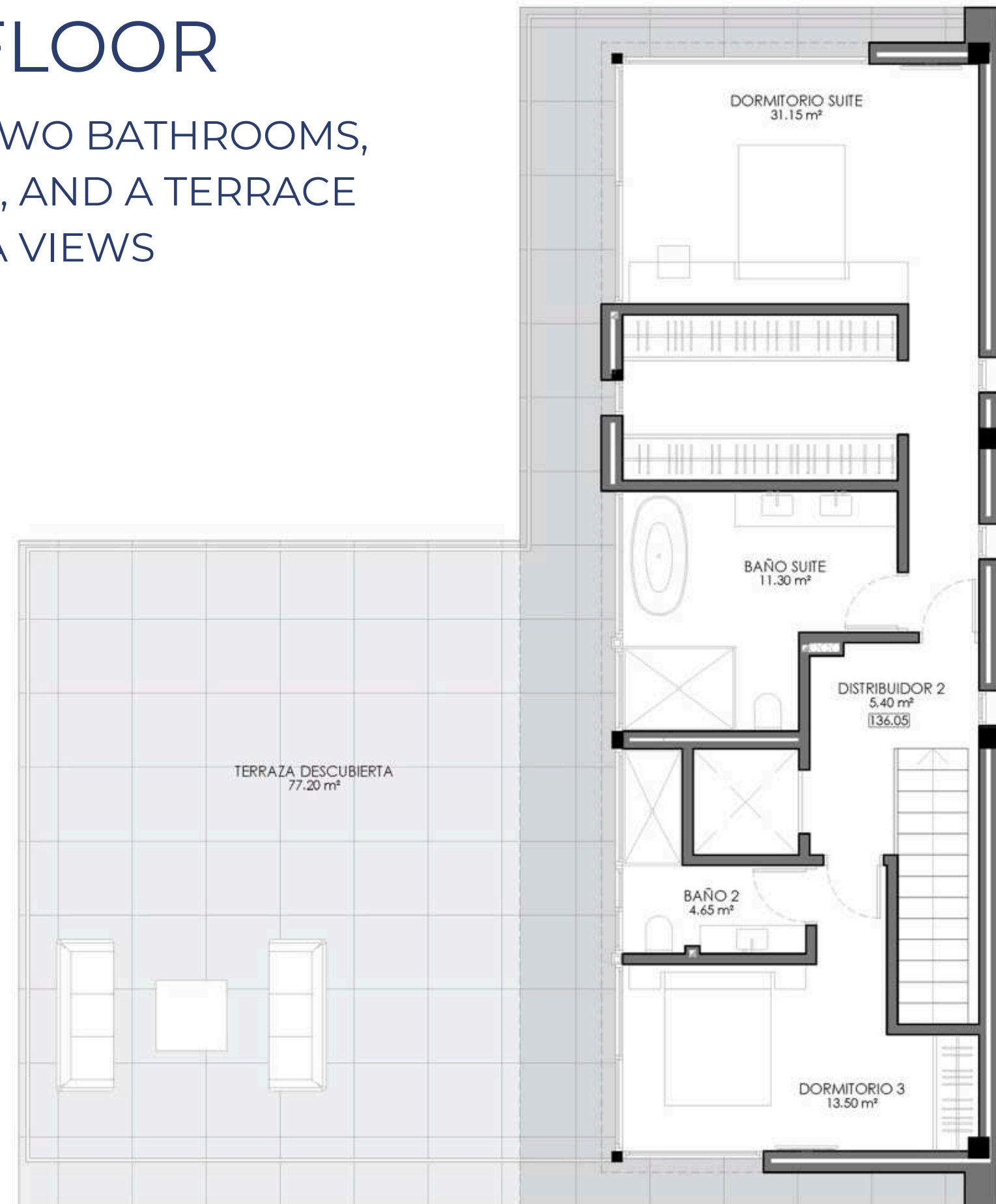
ÁREA CERRADA P.ALTA	83.65
TOTAL CONSTRUIDA	83.65

SUP. COMPUTABLE (m²)

ÁREA CERRADA P.ALTA (100%)	83.65
TOTAL COMPUTABLE	83.65

FIRST FLOOR

TWO BEDROOMS, TWO BATHROOMS,
A WALK-IN CLOSET, AND A TERRACE
WITH SEA VIEWS



ABOUT THE VILLA

- Plot size – 748 sq.m.
- Built area – 440 sq.m.
- Spacious living room
- Modern kitchen
- 4 bedrooms
- 4 bathrooms
- Private elevator
- Soaring ceilings & underfloor heating
- Smart home system
- Private pool & barbecue area
- Exceptional construction and finishing quality
- Underground parking & fitness room



LANDSCAPED GREEN SPACE WITH A PRIVATE POOL



PANORAMIC WINDOWS WITH A GARDEN VIEW



TERRACE WITH A SEA VIEW



TERRACE WITH A POOL

PROFITABLE INVESTMENT

This is not only a comfortable place to live, but also a well-thought-out investment in a highly liquid asset.

The Costa Blanca real estate market continues to grow steadily, while modern, sea-view villas remain in limited supply



RESIDENCE PERMIT AS A GIFT WITH YOUR PURCHASE

When you purchase a villa — receive a Spanish residence permit for 3 years:

- Path to permanent citizenship after 10 years
- Applies to the entire family
- No requirement for permanent residence
- Free movement within the Schengen Zone
- An ideal "Plan B" and a smart investment in long-term stability





DISCOVER A NEW SIDE OF SPAIN
— STYLISH, MODERN, AND
EXCLUSIVE.

CONTACT US TO RECEIVE THE
VILLA FLOOR PLAN, GET PRICING
DETAILS, AND SCHEDULE A
PRIVATE TOUR

+34 966 44 33 00

INFO@ALBIRPROPERTY.COM