

VILLA 6 PLANS

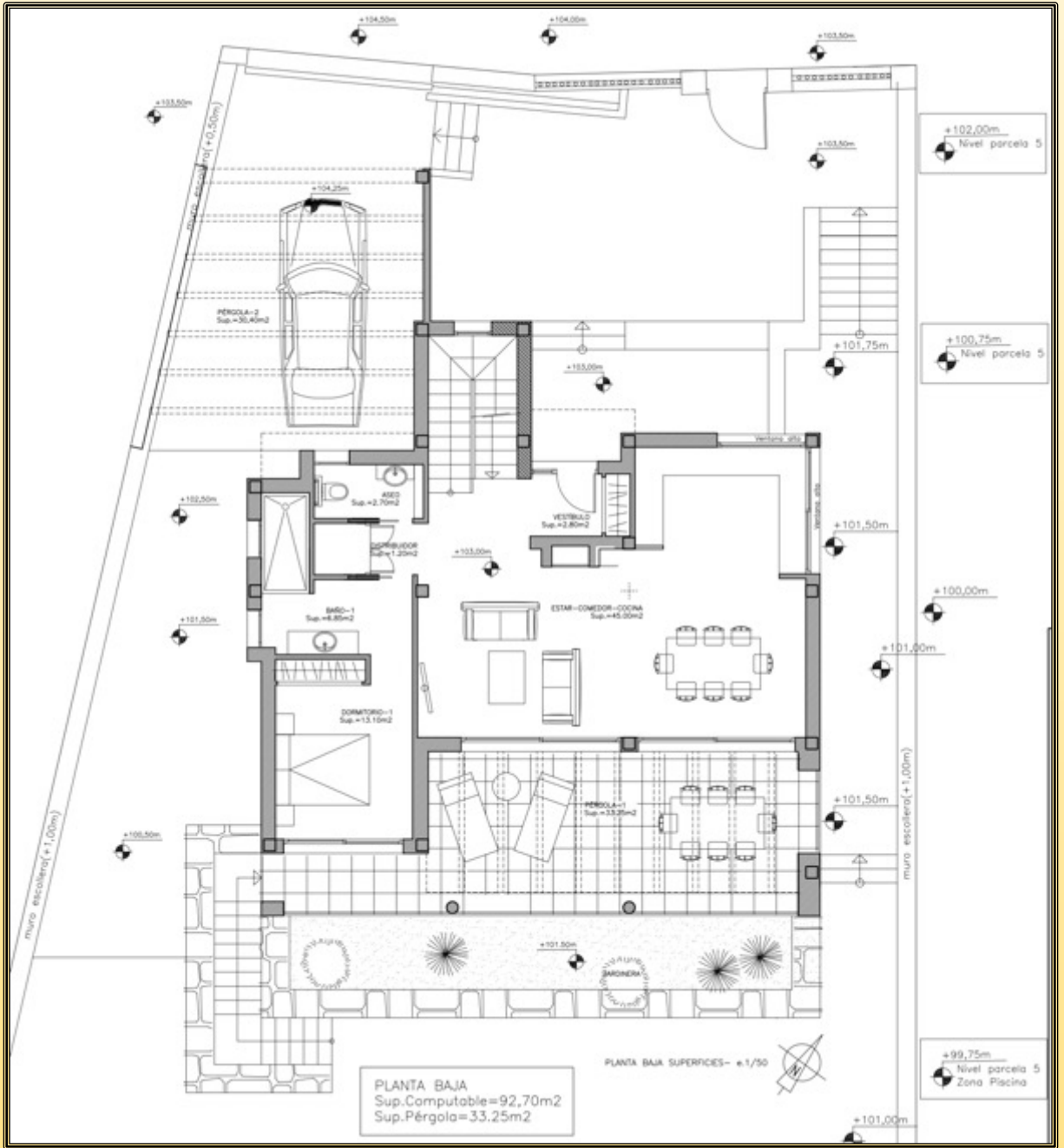
3 deds, 3 baths
PRIVATE POOL & GARDEN
2 LEVELS + BASEMENT



BUILT-UP SURFACE	362 m2
closed above ground	138
closed bellow ground	110
open above ground.	114
USEFUL SURFACE	311 m2
above ground	104
bellow ground	92
open above ground	115

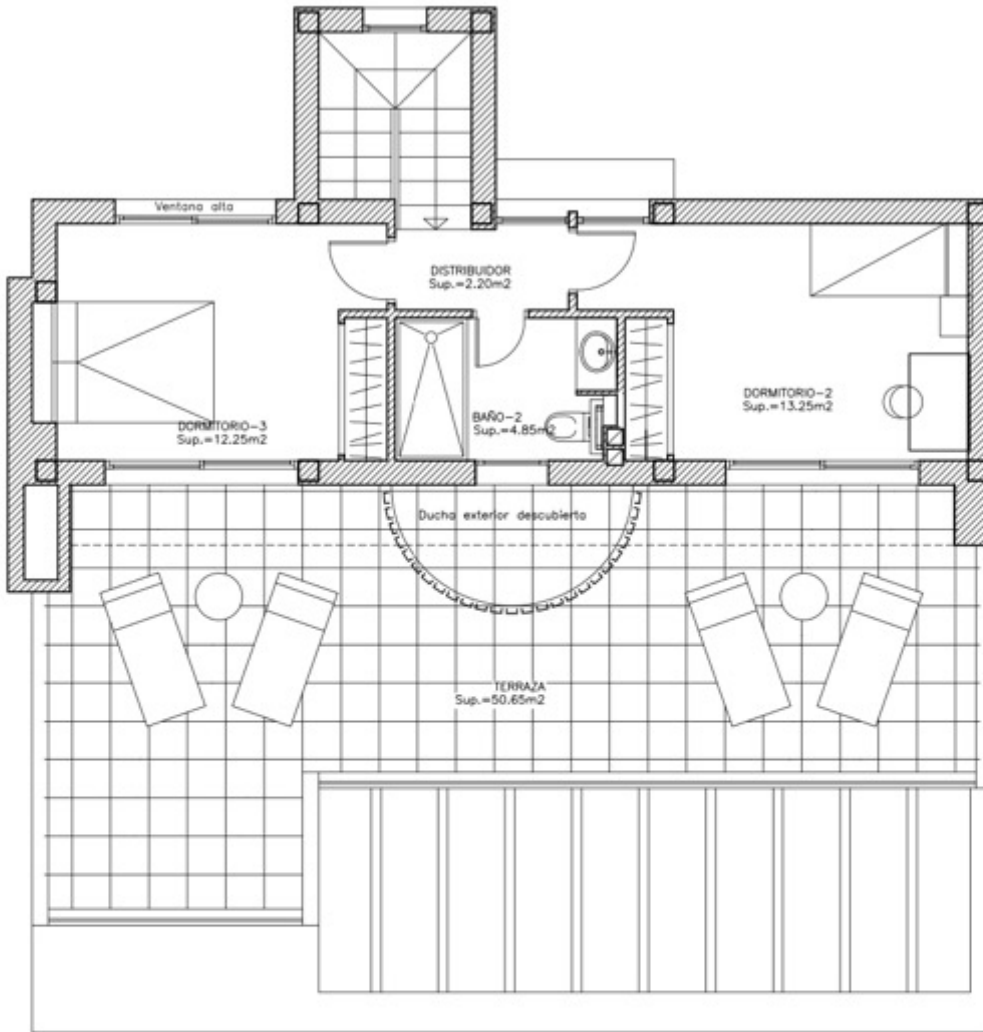
GROUND FLOOR

NOTE: Drawings and images subject to necessary modifications by municipal requirement and legal administrative exigencies, legal or technical that deems appropriate the facultative management
 NOTA: Imágenes y planos sujetos a las modificaciones necesarias a requerimiento municipal y exigencias administrativas legales, jurídicas o técnicas que jure conveniente la dirección administrativa



UPPER FLOOR

NOTE: Drawings and images subject to necessary modifications by municipal requirement and legal administrative exigencies, legal or technical that deems appropriate the facultative management
NOTA: Imágenes y planos sujetos a las modificaciones necesarias a requerimiento municipal y exigencias administrativas legales, jurídicas o técnicas que jure conveniente la dirección administrativa



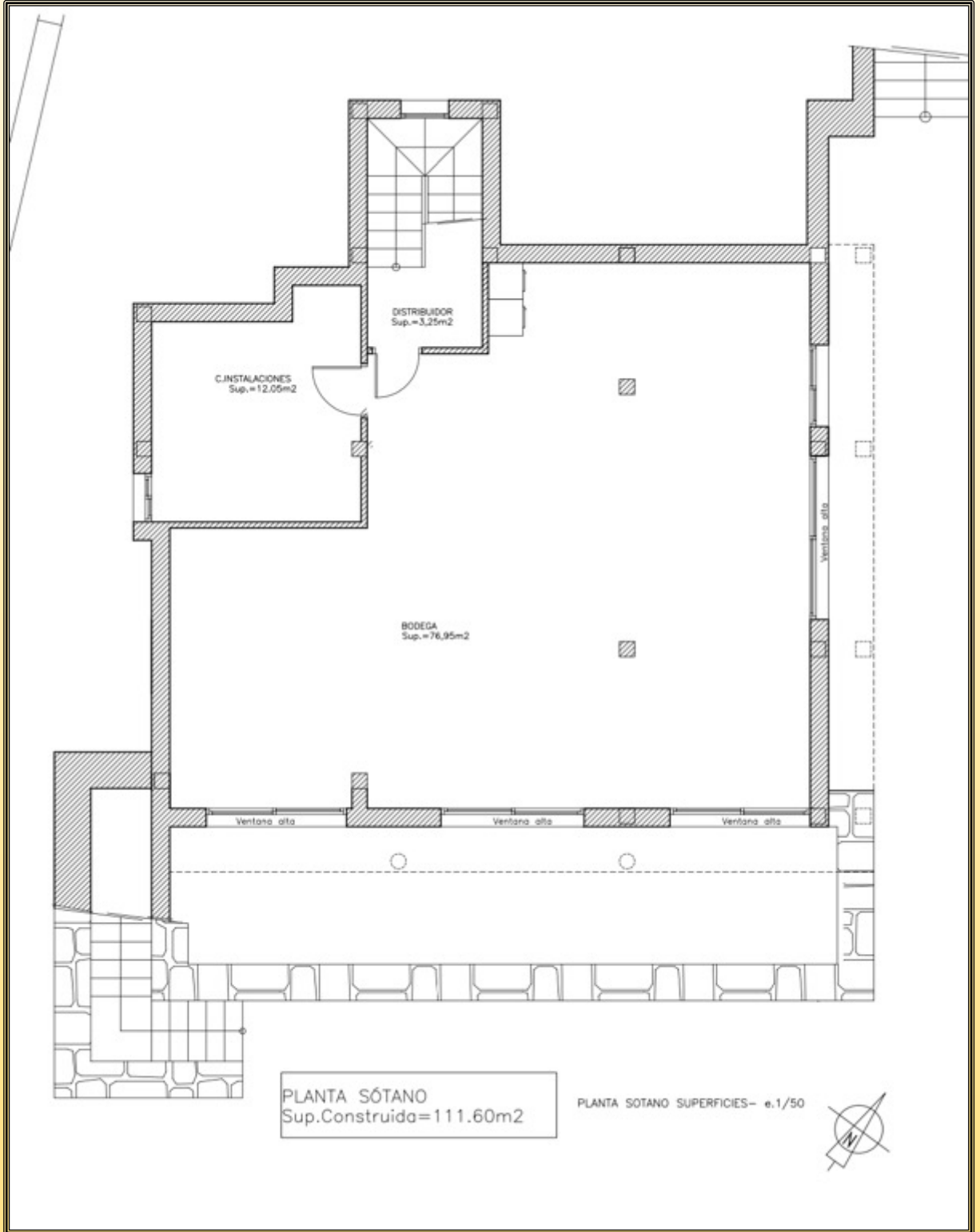
PLANTA ALTA SUPERFICIES- e.1/50



PLANTA ALTA
Sup.Computable=45.45m²
Sup.Terraza=50.65m²

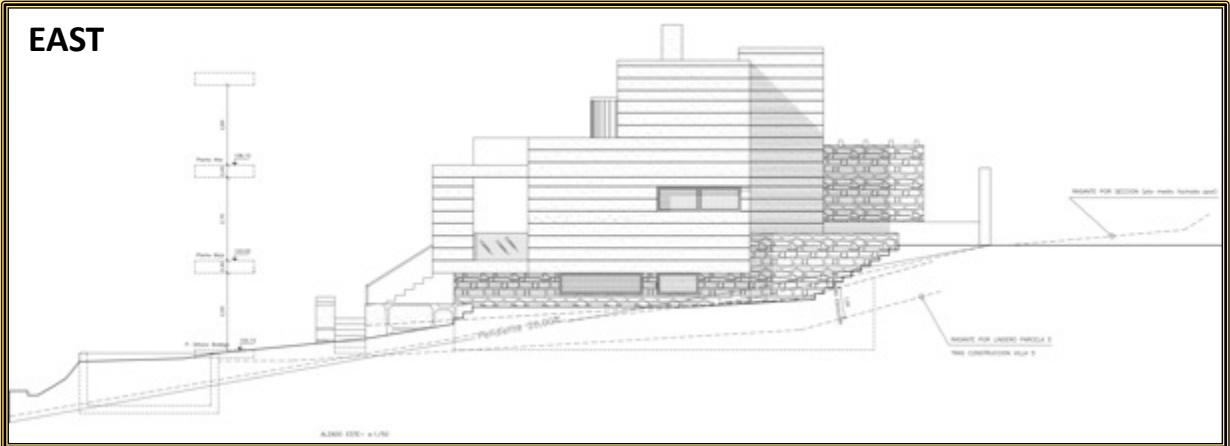
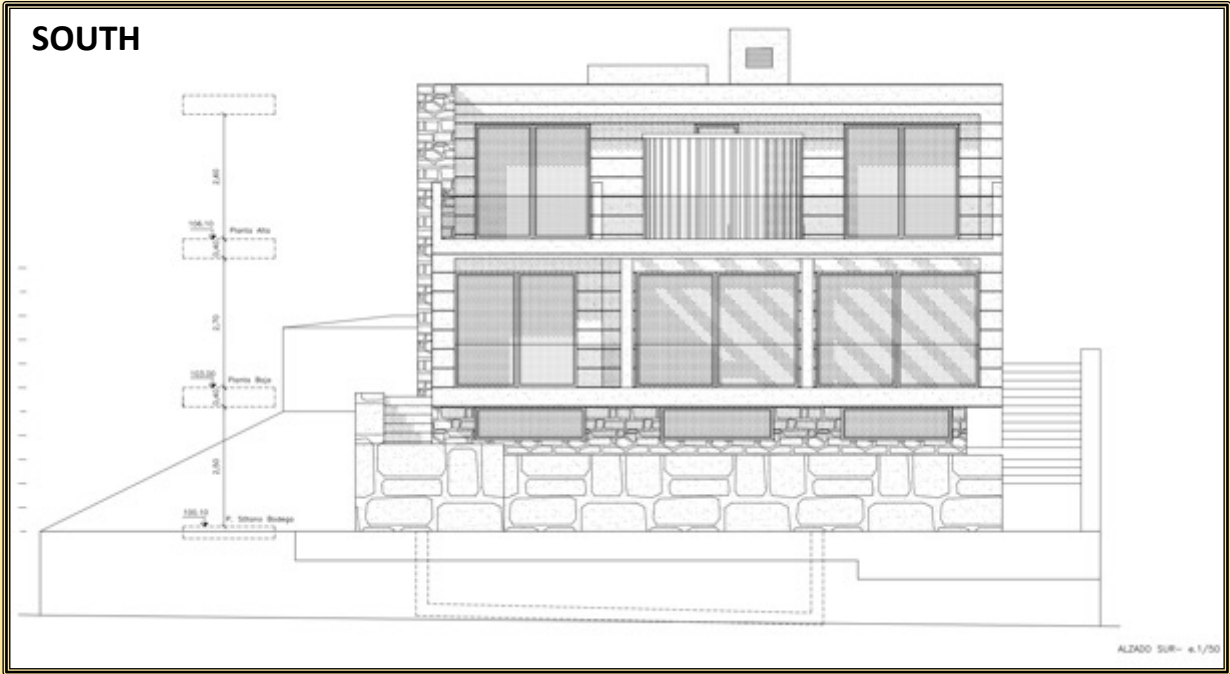
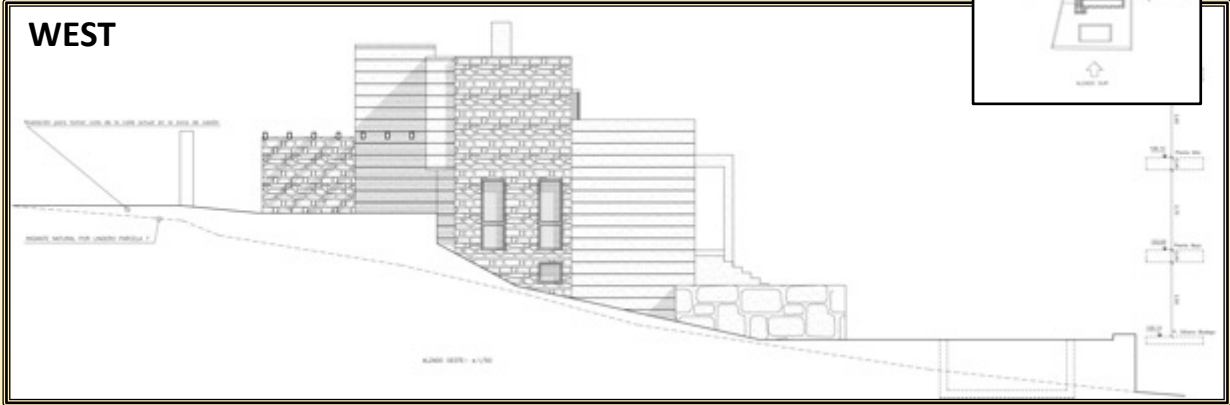
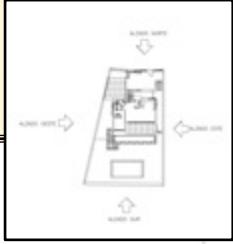
BASEMENT

NOTE: Drawings and images subject to necessary modifications by municipal requirement and legal administrative exigencies, legal or technical that deems appropriate the facultative management
NOTA: Imágenes y planos sujetos a las modificaciones necesarias a requerimiento municipal y exigencias administrativas legales, jurídicas o técnicas que jure conveniente la dirección administrativa



ELEVATION PLANS

NOTE: Drawings and images subject to necessary modifications by municipal requirement and legal administrative exigencies, legal or technical that deems appropriate the facultative management
 NOTA: Imágenes y planos sujetos a las modificaciones necesarias a requerimiento municipal y exigencias administrativas legales, jurídicas o técnicas que pre conveniente la dirección administrativa



ELEVATION PLANS II

NOTE: Drawings and images subject to necessary modifications by municipal requirement and legal administrative exigencies, legal or technical that deems appropriate the facultative management
 NOTA: Imágenes y planos sujetos a las modificaciones necesarias a requerimiento municipal y exigencias administrativas legales, jurídicas o técnicas que jure conveniente la dirección administrativa

