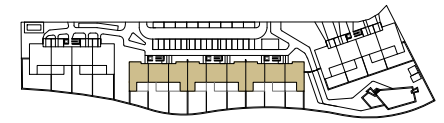


RESIDENCIAL AZURE IV

LO ROMERO GOLF - PILAR DE LA HORADADA



VIVIENDA TIPO V.107

SUPERFICIES ÚTILES / OCCUPIABLE AREA

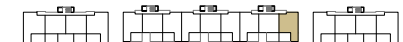
LIVING ROOM - KITCHEN	35.00 m ²
PASO / CORRIDOR	1.55 m ²
DORMITORIO 1 / BEDROOM 1	14.10 m ²
BAÑO 1 / BATHROOM 1	3.50 m ²
DORMITORIO 2 / BEDROOM 2	10.30 m ²
BAÑO 2 / BATHROOM 2	3.50 m ²

TERRAZA 1 / TERRACE 1	6.50 m ²
TERRAZA 2 / TERRACE 2	17.15 m ²
ESCALERA / STAIRS	4.25 m ²
SOLARIUM	57.50 m ²

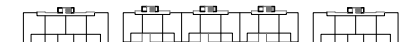
SUPERFICIES CONST. / BUILT AREA

SUP. CERRADA / CLOSED AREA	83.50 m ²
CLOSED AREA + TERRACE + SOLARIUM	164.65 m ²

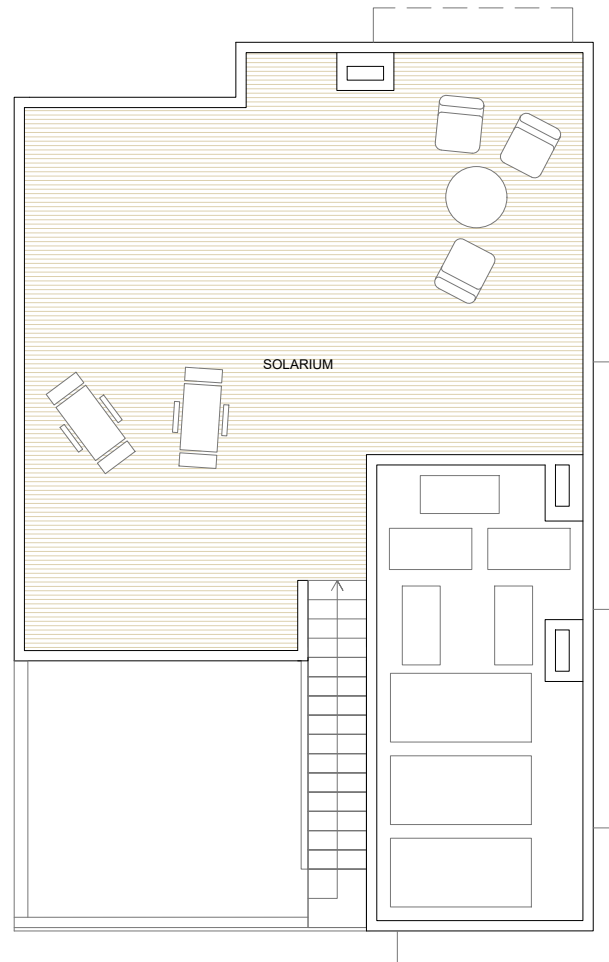
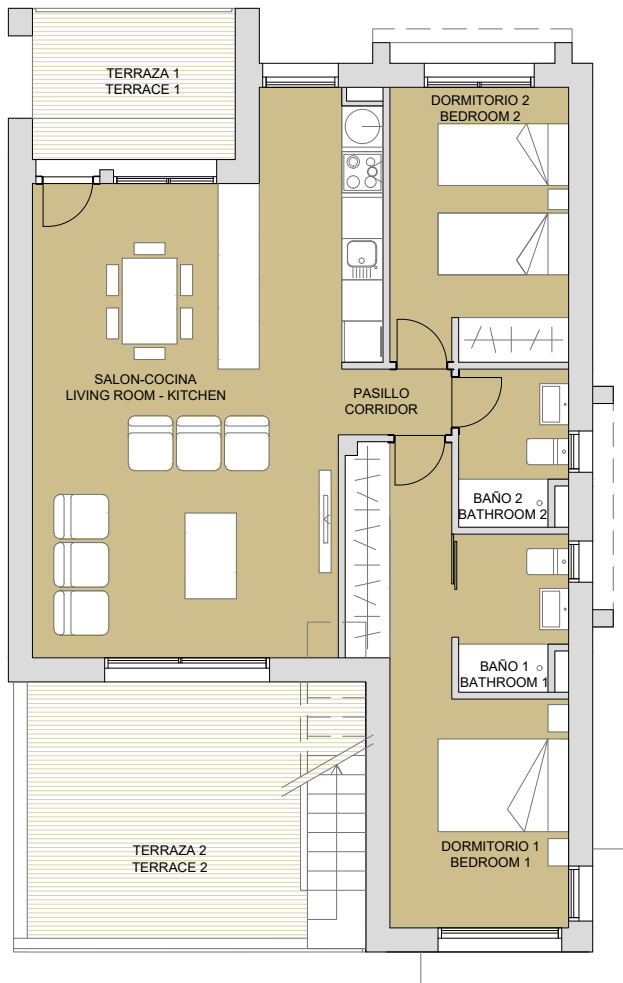
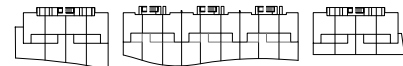
PLANTA SEGUNDA



PLANTA PRIMERA



PLANTA BAJA



PLAN SUBJECT TO POSSIBLE MODIFICATIONS FOR TECHNICAL OR LEGAL REASONS. THE MEASUREMENTS SHOWN ARE APPROXIMATE
PLANO SUJETO A POSIBLES MODIFICACIONES DE ÍNDOLE TÉCNICA O JURÍDICA. LAS SUPERFICIES SON APROXIMADAS

b binomium
properties

CONTACT: 0034 650 834 472
info@binomiumproperties.com
www.binomiumproperties.com

