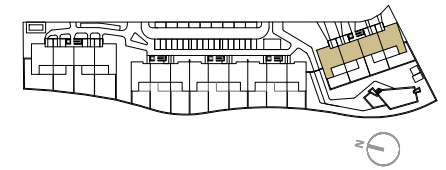


RESIDENCIAL AZURE IV

LO ROMERO GOLF - PILAR DE LA HORADADA



VIVIENDA TIPO V.111

SUPERFICIES ÚTILES / OCCUPIABLE AREA

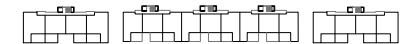
LIVING ROOM - KITCHEN	31.90 m ²
PASO / CORRIDOR	1.50 m ²
DORMITORIO 1 / BEDROOM 1	12.10 m ²
BAÑO 1 / BATHROOM 1	3.55 m ²
DORMITORIO 2 / BEDROOM 2	10.45 m ²
BAÑO 2 / BATHROOM 2	3.40 m ²

TERRAZA 1 / TERRACE 1	22.00 m ²
JARDIN 1 / GARDEN 1	19.80 m ²
JARDIN 2 / GARDEN 2	59.25 m ²

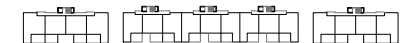
SUPERFICIES CONST. / BUILT AREA

SUP. CERRADA / CLOSED AREA	74.60 m ²
CLOSED AREA + TERRACE	96.60 m ²
CLOSED AREA + TERRACE + GARDEN	175.65 m ²

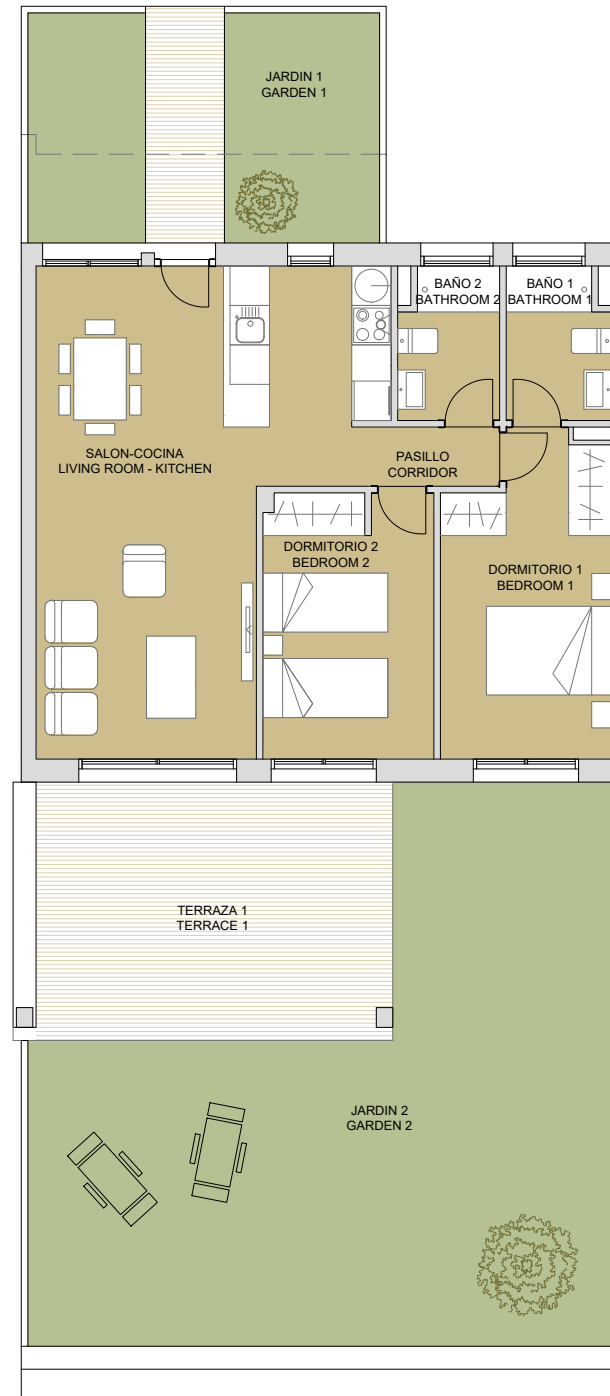
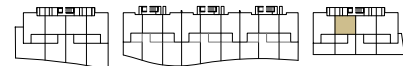
PLANTA SEGUNDA



PLANTA PRIMERA



PLANTA BAJA



PLAN SUBJECT TO POSSIBLE MODIFICATIONS FOR TECHNICAL OR LEGAL REASONS. THE MEASUREMENTS SHOWN ARE APPROXIMATE
 PLANO SUJETO A POSIBLES MODIFICACIONES DE INDOLE TÉCNICA O JURÍDICA. LAS SUPERFICIES SON APROXIMADAS



CONTACT: 0034 650 834 472
 info@binomiumproperties.com
 www.binomiumproperties.com

