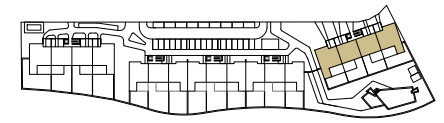


RESIDENCIAL AZURE IV

LO ROMERO GOLF - PILAR DE LA HORADADA



VIVIENDA TIPO V.113

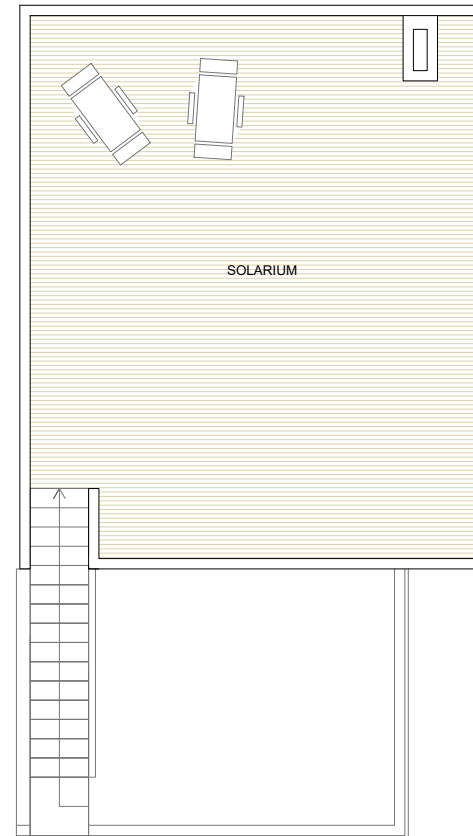
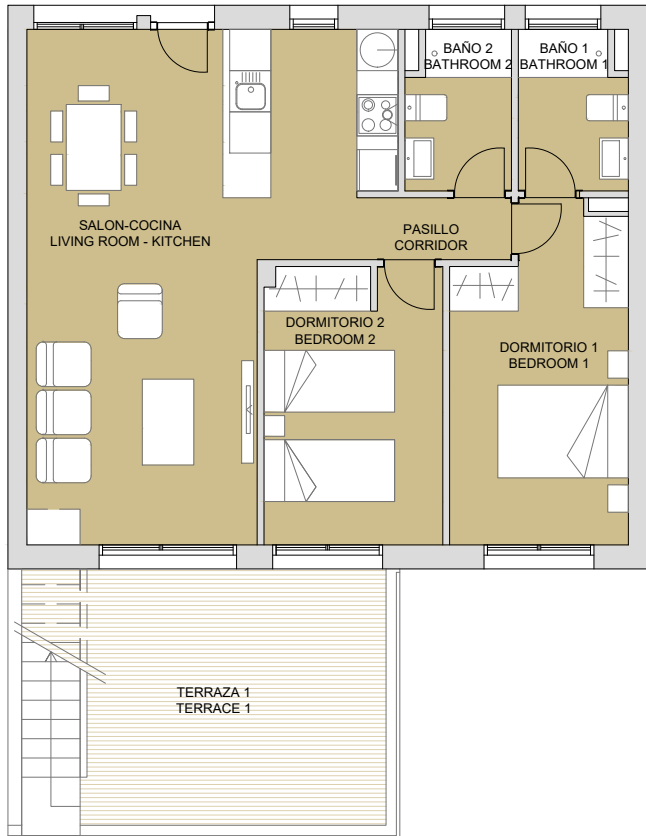
SUPERFICIES ÚTILES / OCCUPIABLE AREA

LIVING ROOM - KITCHEN	31.90 m ²
PASO / CORRIDOR	1.50 m ²
DORMITORIO 1 / BEDROOM 1	12.10 m ²
BAÑO 1 / BATHROOM 1	3.55 m ²
DORMITORIO 2 / BEDROOM 2	10.45 m ²
BAÑO 2 / BATHROOM 2	3.40 m ²

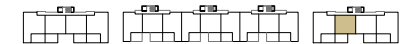
TERRAZA 1 / TERRACE 1	19.05 m ²
ESCALERA / STAIRS	4.25 m ²
SOLARIUM	50.35 m ²

SUPERFICIES CONST. / BUILT AREA

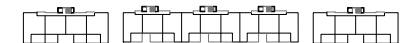
SUP. CERRADA / CLOSED AREA	74.70 m ²
CLOSED AREA + TERRACE + SOLARIUM	144.10 m ²



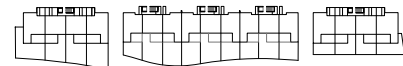
PLANTA SEGUNDA



PLANTA PRIMERA



PLANTA BAJA



PLAN SUBJECT TO POSSIBLE MODIFICATIONS FOR TECHNICAL OR LEGAL REASONS. THE MEASUREMENTS SHOWN ARE APPROXIMATE
PLANO SUJETO A POSIBLES MODIFICACIONES DE ÍNDOLE TÉCNICA O JURÍDICA. LAS SUPERFICIES SON APROXIMADAS

binomium
properties

CONTACT: 0034 650 834 472
info@binomiumproperties.com
www.binomiumproperties.com

