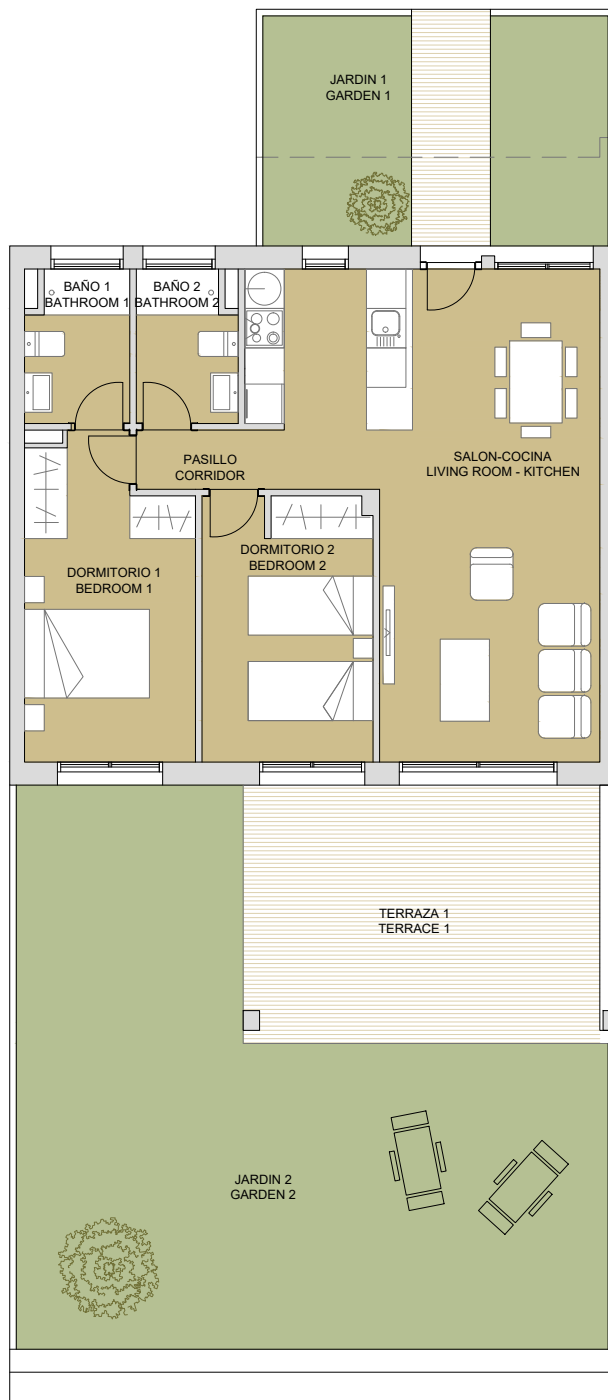
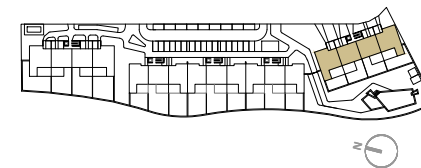


PLAN SUBJECT TO POSSIBLE MODIFICATIONS FOR TECHNICAL OR LEGAL REASONS. THE MEASUREMENTS SHOWN ARE APPROXIMATE
 PLANO SUJETO A POSIBLES MODIFICACIONES DE INDOLE TÉCNICA O JURÍDICA. LAS SUPERFICIES SON APROXIMADAS



RESIDENCIAL AZURE IV

LO ROMERO GOLF - PILAR DE LA HORADADA



VIVIENDA TIPO V.114

SUPERFICIES ÚTILES / OCCUPIABLE AREA

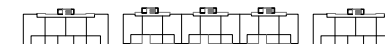
LIVING ROOM - KITCHEN	31.90 m2
PASO / CORRIDOR	1.50 m2
DORMITORIO 1 / BEDROOM 1	12.10 m2
BAÑO 1 / BATHROOM 1	3.55 m2
DORMITORIO 2 / BEDROOM 2	10.45 m2
BAÑO 2 / BATHROOM 2	3.40 m2

TERRAZA 1 / TERRACE 1	22.00 m2
JARDIN 1 / GARDEN 1	19.80 m2
JARDIN 2 / GARDEN 2	59.25 m2

SUPERFICIES CONST. / BUILT AREA

SUP. CERRADA / CLOSED AREA	74.60 m2
CLOSED AREA + TERRACE	96.60 m2
CLOSED AREA + TERRACE + GARDEN	175.65 m2

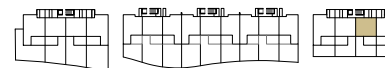
PLANTA SEGUNDA



PLANTA PRIMERA



PLANTA BAJA



CONTACT: 0034 650 834 472
 info@binomiumproperties.com
 www.binomiumproperties.com