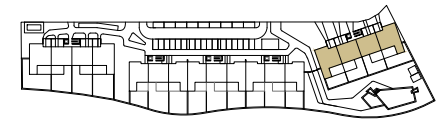


RESIDENCIAL AZURE IV

LO ROMERO GOLF - PILAR DE LA HORADADA



VIVIENDA TIPO V.116

SUPERFICIES ÚTILES / OCCUPIABLE AREA

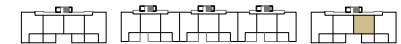
LIVING ROOM - KITCHEN	31.90 m2
PASO / CORRIDOR	1.50 m2
DORMITORIO 1 / BEDROOM 1	12.10 m2
BAÑO 1 / BATHROOM 1	3.55 m2
DORMITORIO 2 / BEDROOM 2	10.45 m2
BAÑO 2 / BATHROOM 2	3.40 m2

TERRAZA 1 / TERRACE 1	19.05 m2
ESCALERA / STAIRS	4.25 m2
SOLARIUM	47.70 m2

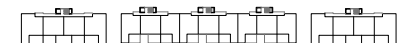
SUPERFICIES CONST. / BUILT AREA

SUP. CERRADA / CLOSED AREA	74.70 m2
CLOSED AREA + TERRACE + SOLARIUM	141.45 m2

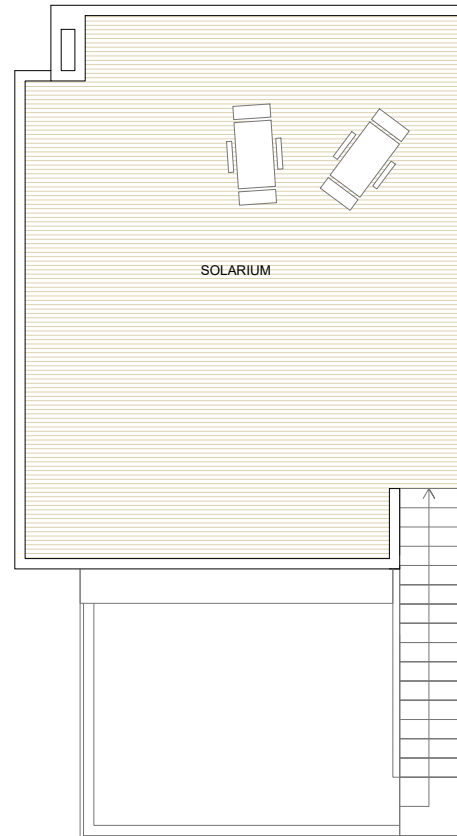
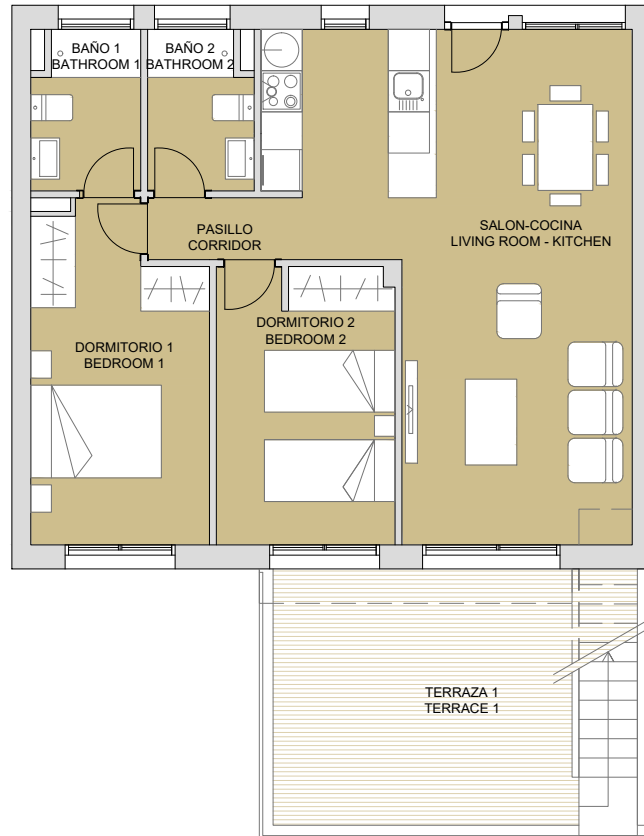
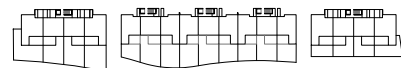
PLANTA SEGUNDA



PLANTA PRIMERA



PLANTA BAJA



PLAN SUBJECT TO POSSIBLE MODIFICATIONS FOR TECHNICAL OR LEGAL REASONS. THE MEASUREMENTS SHOWN ARE APPROXIMATE
PLANO SUJETO A POSIBLES MODIFICACIONES DE ÍNDOLE TÉCNICA O JURÍDICA. LAS SUPERFICIES SON APROXIMADAS

b binomium
properties

CONTACT: 0034 650 834 472
info@binomiumproperties.com
www.binomiumproperties.com