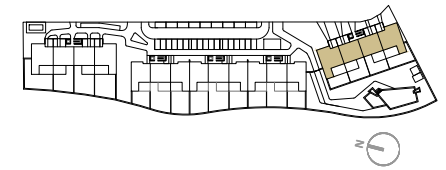


RESIDENCIAL AZURE IV

LO ROMERO GOLF - PILAR DE LA HORADADA



VIVIENDA TIPO V.118

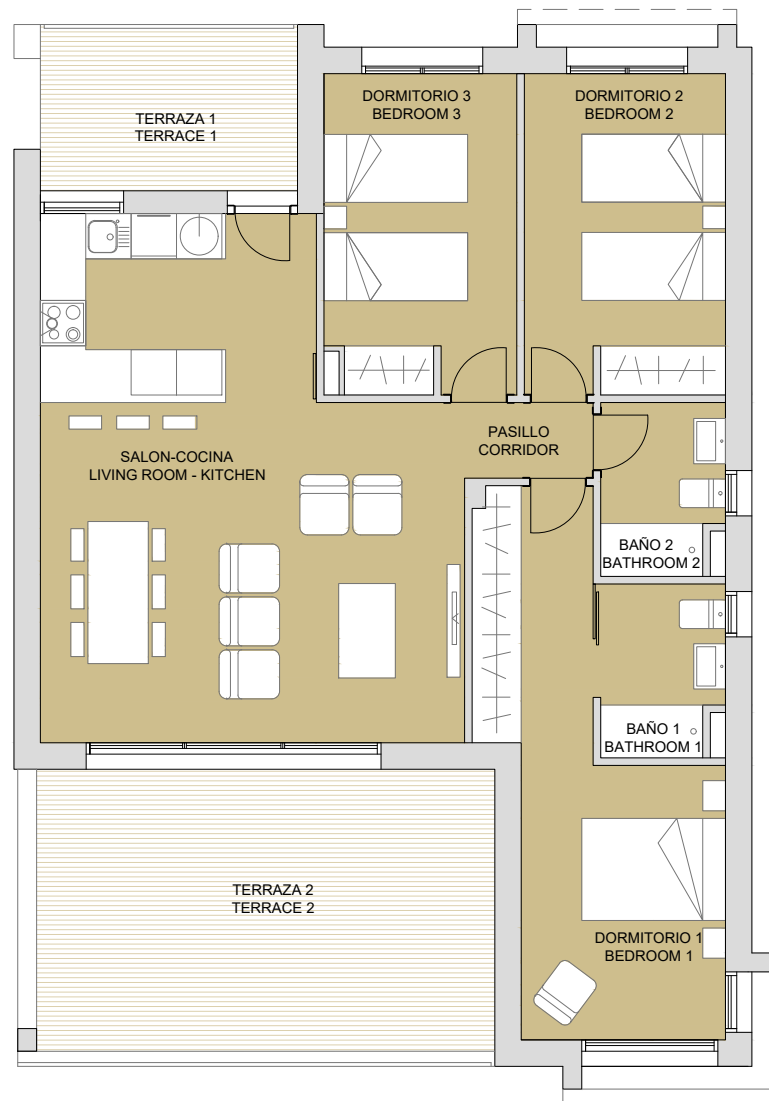
SUPERFICIES ÚTILES / OCCUPIABLE AREA

LIVING ROOM - KITCHEN	34.35 m ²
PASO / CORRIDOR	1.70 m ²
DORMITORIO 1 / BEDROOM 1	15.50 m ²
BAÑO 1 / BATHROOM 1	3.60 m ²
DORMITORIO 2 / BEDROOM 2	11.25 m ²
DORMITORIO 3 / BEDROOM 3	10.80 m ²
BAÑO 2 / BATHROOM 2	3.60 m ²

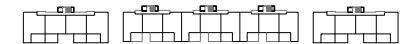
TERRAZA 1 / TERRACE 1	7.50 m ²
TERRAZA 2 / TERRACE 2	24.30 m ²

SUPERFICIES CONST. / BUILT AREA

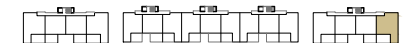
SUP. CERRADA / CLOSED AREA	98.10 m ²
CLOSED AREA + TERRACE	129.90 m ²



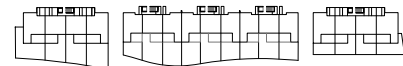
PLANTA SEGUNDA



PLANTA PRIMERA



PLANTA BAJA



CONTACT: 0034 650 834 472
info@binomiumproperties.com
www.binomiumproperties.com

PLAN SUBJECT TO POSSIBLE MODIFICATIONS FOR TECHNICAL OR LEGAL REASONS. THE MEASUREMENTS SHOWN ARE APPROXIMATE
 PLANO SUJETO A POSIBLES MODIFICACIONES DE INDOLE TÉCNICA O JURÍDICA. LAS SUPERFICIES SON APROXIMADAS

