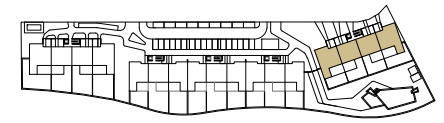


RESIDENCIAL AZURE IV

LO ROMERO GOLF - PILAR DE LA HORADADA



VIVIENDA TIPO V.119

SUPERFICIES ÚTILES / OCCUPIABLE AREA

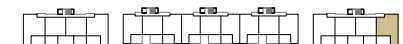
| | |
|--------------------------|----------|
| LIVING ROOM - KITCHEN | 34.35 m2 |
| PASO / CORRIDOR | 1.70 m2 |
| DORMITORIO 1 / BEDROOM 1 | 15.50 m2 |
| BAÑO 1 / BATHROOM 1 | 3.60 m2 |
| DORMITORIO 2 / BEDROOM 2 | 11.25 m2 |
| DORMITORIO 3 / BEDROOM 3 | 10.80 m2 |
| BAÑO 2 / BATHROOM 2 | 3.60 m2 |

| | |
|-----------------------|----------|
| TERRAZA 1 / TERRACE 1 | 7.50 m2 |
| TERRAZA 2 / TERRACE 2 | 21.30 m2 |
| ESCALERA / STAIRS | 4.25 m2 |
| SOLARIUM | 70.60 m2 |

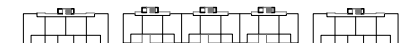
SUPERFICIES CONST. / BUILT AREA

| | |
|----------------------------------|-----------|
| SUP. CERRADA / CLOSED AREA | 98.10 m2 |
| CLOSED AREA + TERRACE + SOLARIUM | 197.50 m2 |

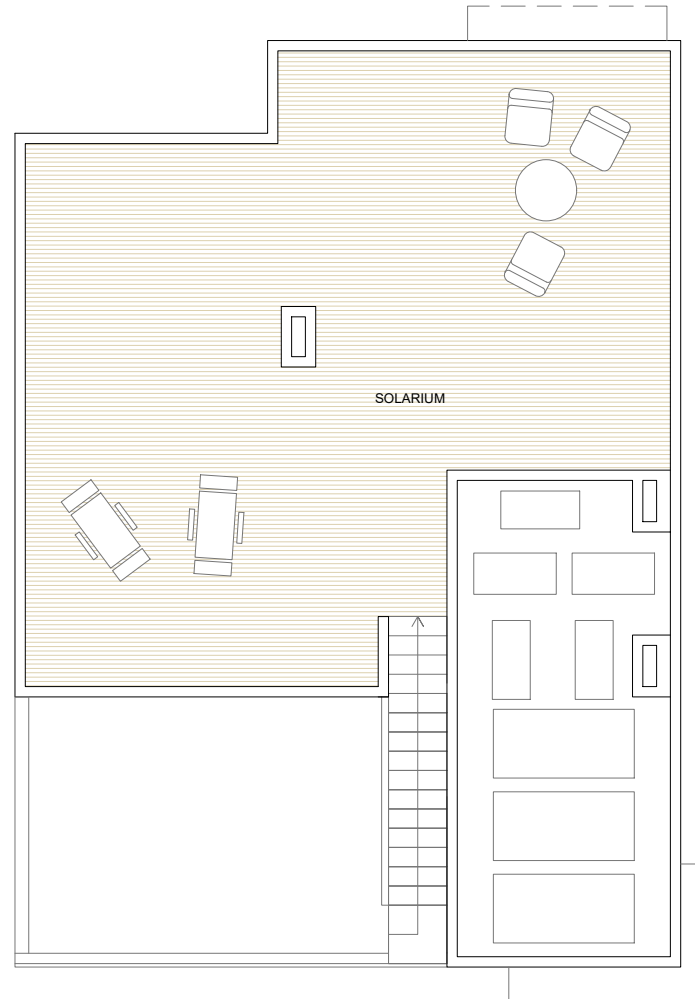
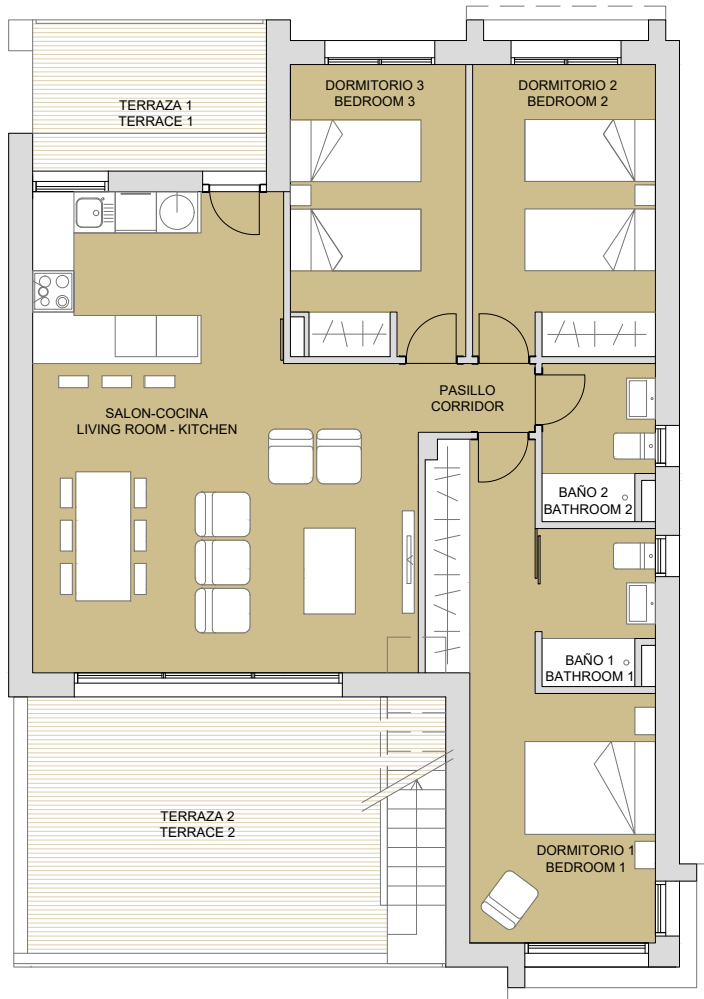
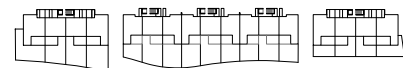
PLANTA SEGUNDA



PLANTA PRIMERA



PLANTA BAJA



PLAN SUBJECT TO POSSIBLE MODIFICATIONS FOR TECHNICAL OR LEGAL REASONS. THE MEASUREMENTS SHOWN ARE APPROXIMATE
PLANO SUJETO A POSIBLES MODIFICACIONES DE ÍNDOLE TÉCNICA O JURÍDICA. LAS SUPERFICIES SON APROXIMADAS

binomium
properties

CONTACT: 0034 650 834 472
info@binomiumproperties.com
www.binomiumproperties.com