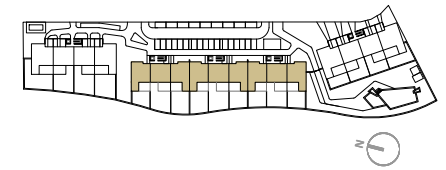


RESIDENCIAL AZURE IV

LO ROMERO GOLF - PILAR DE LA HORADADA



VIVIENDA TIPO V.81

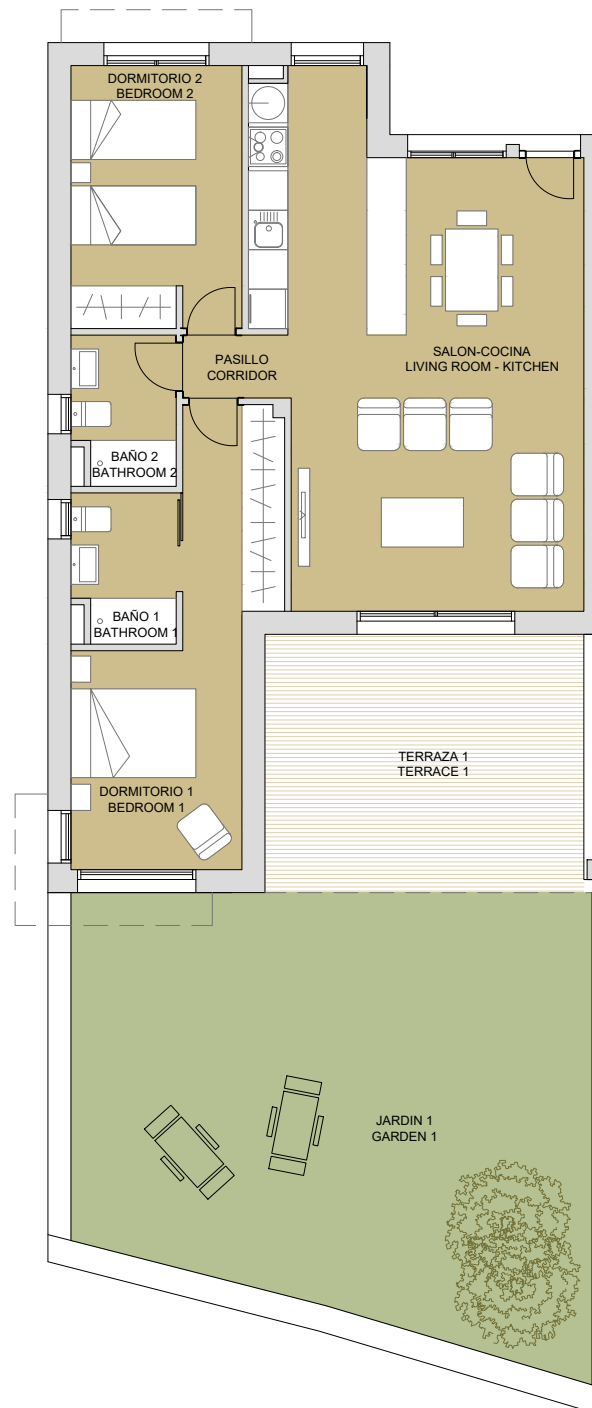
SUPERFICIES ÚTILES / OCCUPIABLE AREA

LIVING ROOM - KITCHEN	35.00 m ²
PASO / CORRIDOR	1.55 m ²
DORMITORIO 1 / BEDROOM 1	14.10 m ²
BAÑO 1 / BATHROOM 1	3.50 m ²
DORMITORIO 2 / BEDROOM 2	10.30 m ²
BAÑO 2 / BATHROOM 2	3.50 m ²

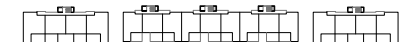
TERRAZA 1 / TERRACE 1	19.75 m ²
JARDIN 1 / GARDEN 1	55.95 m ²

SUPERFICIES CONST. / BUILT AREA

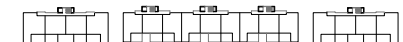
SUP. CERRADA / CLOSED AREA	83.50 m ²
CLOSED AREA + TERRACE	103.25 m ²
CLOSED AREA + TERRACE + GARDEN	159.20 m ²



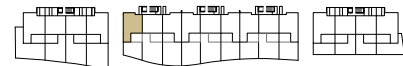
PLANTA SEGUNDA



PLANTA PRIMERA



PLANTA BAJA



b binomium
properties

CONTACT: 0034 650 834 472
info@binomiumproperties.com
www.binomiumproperties.com

PLAN SUBJECT TO POSSIBLE MODIFICATIONS FOR TECHNICAL OR LEGAL REASONS. THE MEASUREMENTS SHOWN ARE APPROXIMATE
PLANO SUJETO A POSIBLES MODIFICACIONES DE INDOLE TÉCNICA O JURÍDICA. LAS SUPERFICIES SON APROXIMADAS

