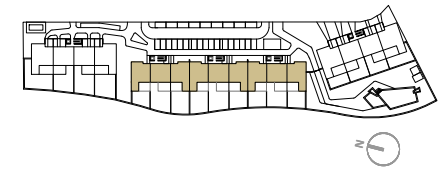


RESIDENCIAL AZURE IV

LO ROMERO GOLF - PILAR DE LA HORADADA



VIVIENDA TIPO V.83

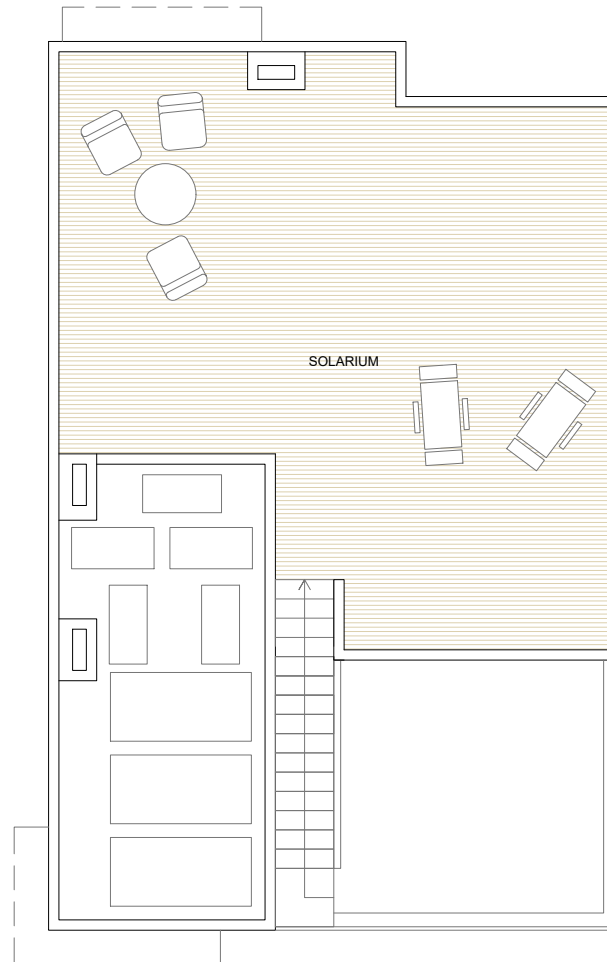
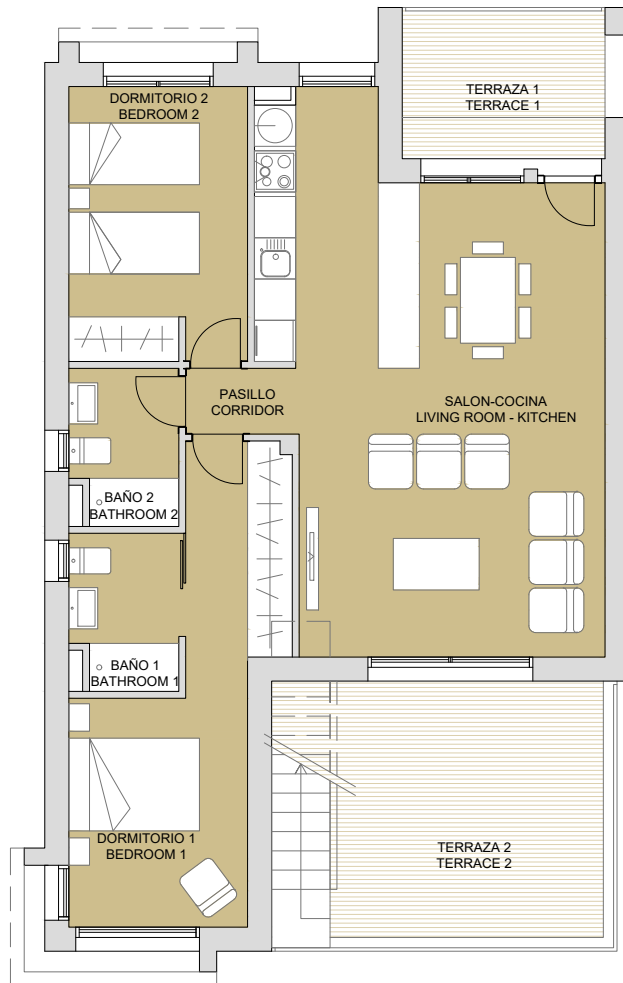
SUPERFICIES ÚTILES / OCCUPIABLE AREA

| | |
|--------------------------|----------|
| LIVING ROOM - KITCHEN | 35.00 m2 |
| PASO / CORRIDOR | 1.55 m2 |
| DORMITORIO 1 / BEDROOM 1 | 14.10 m2 |
| BAÑO 1 / BATHROOM 1 | 3.50 m2 |
| DORMITORIO 2 / BEDROOM 2 | 10.30 m2 |
| BAÑO 2 / BATHROOM 2 | 3.50 m2 |

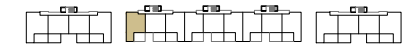
| | |
|-----------------------|----------|
| TERRAZA 1 / TERRACE 1 | 6.50 m2 |
| TERRAZA 2 / TERRACE 2 | 17.15 m2 |
| ESCALERA / STAIRS | 4.25 m2 |
| SOLARIUM | 57.50 m2 |

SUPERFICIES CONST. / BUILT AREA

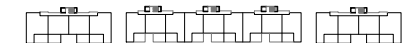
| | |
|----------------------------------|-----------|
| SUP. CERRADA / CLOSED AREA | 83.50 m2 |
| CLOSED AREA + TERRACE + SOLARIUM | 164.65 m2 |



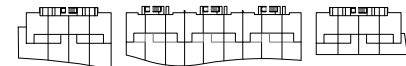
PLANTA SEGUNDA



PLANTA PRIMERA



PLANTA BAJA



b binomium
properties

CONTACT: 0034 650 834 472
info@binomiumproperties.com
www.binomiumproperties.com

PLAN SUBJECT TO POSSIBLE MODIFICATIONS FOR TECHNICAL OR LEGAL REASONS. THE MEASUREMENTS SHOWN ARE APPROXIMATE
PLANO SUJETO A POSIBLES MODIFICACIONES DE ÍNDOLE TÉCNICA O JURÍDICA. LAS SUPERFICIES SON APROXIMADAS

