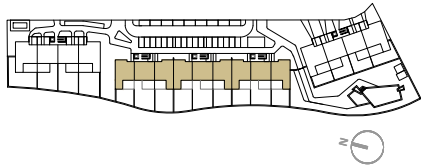


RESIDENCIAL AZURE IV

LO ROMERO GOLF - PILAR DE LA HORADADA



VIVIENDA TIPO V.85

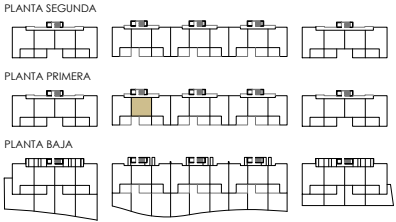
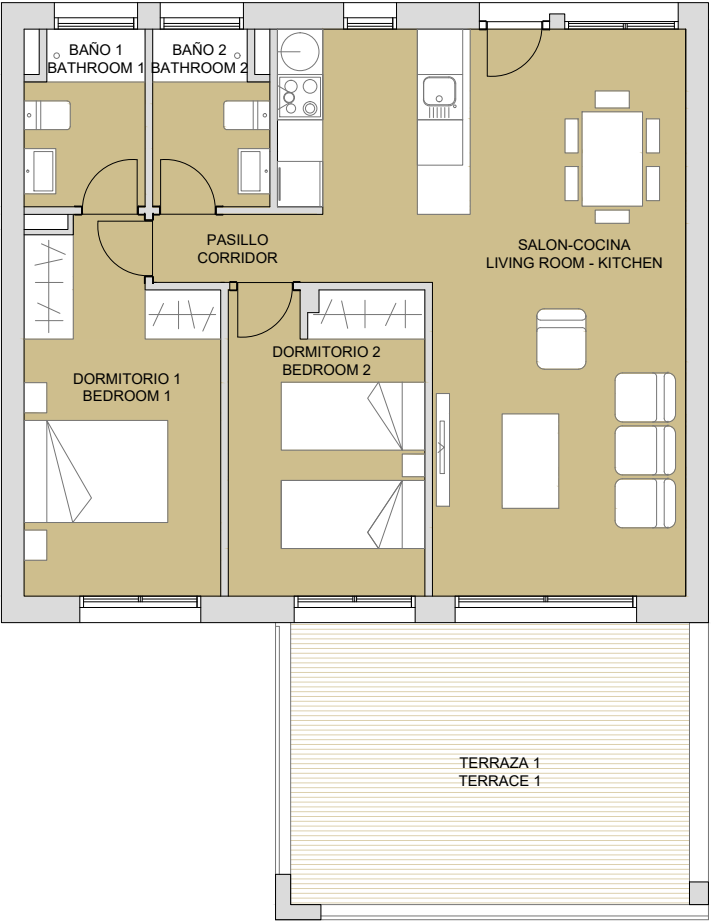
SUPERFICIES ÚTILES / OCCUPIABLE AREA

| | |
|--------------------------|----------|
| LIVING ROOM - KITCHEN | 31.90 m2 |
| PASO / CORRIDOR | 1.50 m2 |
| DORMITORIO 1 / BEDROOM 1 | 12.10 m2 |
| BAÑO 1 / BATHROOM 1 | 3.55 m2 |
| DORMITORIO 2 / BEDROOM 2 | 10.45 m2 |
| BAÑO 2 / BATHROOM 2 | 3.40 m2 |

| | |
|-----------------------|----------|
| TERRAZA 1 / TERRACE 1 | 22.00 m2 |
|-----------------------|----------|

SUPERFICIES CONST. / BUILT AREA

| | |
|----------------------------|----------|
| SUP. CERRADA / CLOSED AREA | 74.70 m2 |
| CLOSED AREA + TERRACE | 96.70 m2 |



CONTACT: 0034 650 834 472
 info@binomiumproperties.com
 www.binomiumproperties.com

PLAN SUBJECT TO POSSIBLE MODIFICATIONS FOR TECHNICAL OR LEGAL REASONS. THE MEASUREMENTS SHOWN ARE APPROXIMATE
 PLANO SUJETO A POSIBLES MODIFICACIONES DE INDOLE TÉCNICA O JURÍDICA. LAS SUPERFICIES SON APROXIMADAS

