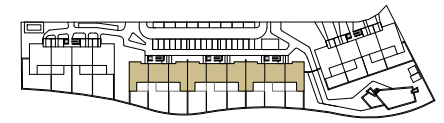


# RESIDENCIAL AZURE IV

LO ROMERO GOLF - PILAR DE LA HORADADA



## VIVIENDA TIPO V.86

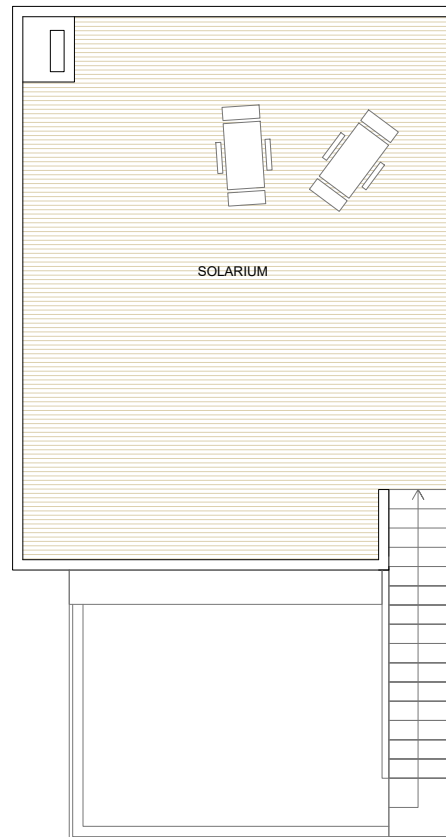
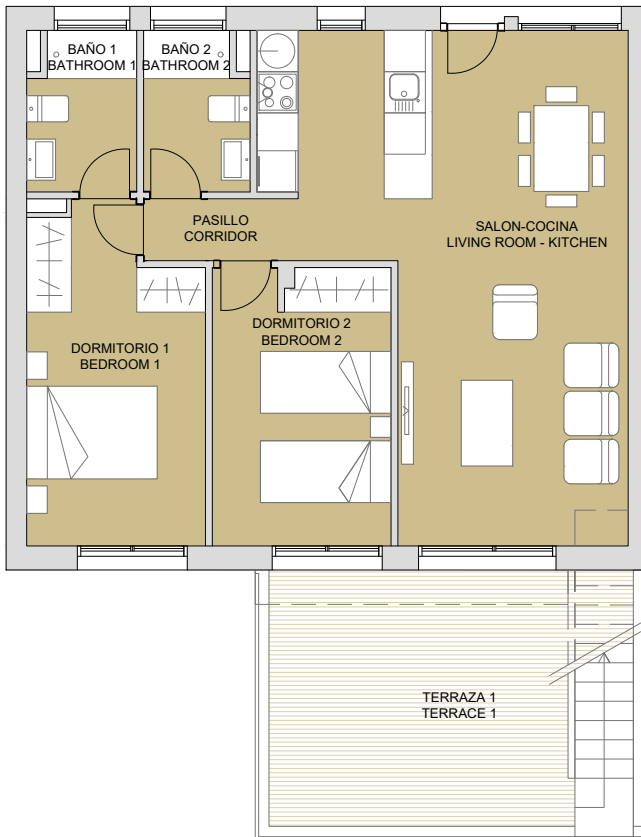
### SUPERFICIES ÚTILES / OCCUPIABLE AREA

LIVING ROOM - KITCHEN	31.90 m <sup>2</sup>
PASO / CORRIDOR	1.50 m <sup>2</sup>
DORMITORIO 1 / BEDROOM 1	12.10 m <sup>2</sup>
BAÑO 1 / BATHROOM 1	3.55 m <sup>2</sup>
DORMITORIO 2 / BEDROOM 2	10.45 m <sup>2</sup>
BAÑO 2 / BATHROOM 2	3.40 m <sup>2</sup>

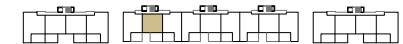
TERRAZA 1 / TERRACE 1	19.05 m <sup>2</sup>
ESCALERA / STAIRS	4.25 m <sup>2</sup>
SOLARIUM	47.05 m <sup>2</sup>

### SUPERFICIES CONST. / BUILT AREA

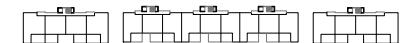
SUP. CERRADA / CLOSED AREA	74.70 m <sup>2</sup>
CLOSED AREA + TERRACE + SOLARIUM	140.80 m <sup>2</sup>



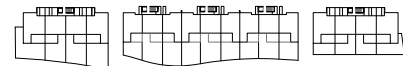
PLANTA SEGUNDA



PLANTA PRIMERA



PLANTA BAJA



PLAN SUBJECT TO POSSIBLE MODIFICATIONS FOR TECHNICAL OR LEGAL REASONS. THE MEASUREMENTS SHOWN ARE APPROXIMATE  
PLANO SUJETO A POSIBLES MODIFICACIONES DE ÍNDOLE TÉCNICA O JURÍDICA. LAS SUPERFICIES SON APROXIMADAS

**b** binomium  
properties

CONTACT: 0034 650 834 472  
info@binomiumproperties.com  
www.binomiumproperties.com

