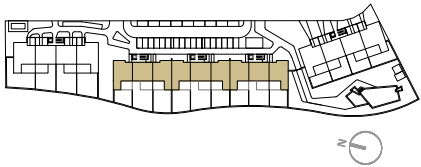


RESIDENCIAL AZURE IV

LO ROMERO GOLF - PILAR DE LA HORADADA



VIVIENDA TIPO V.88

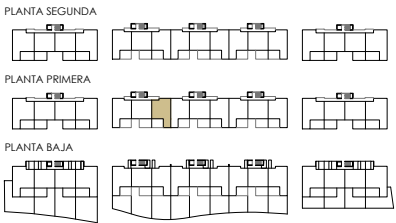
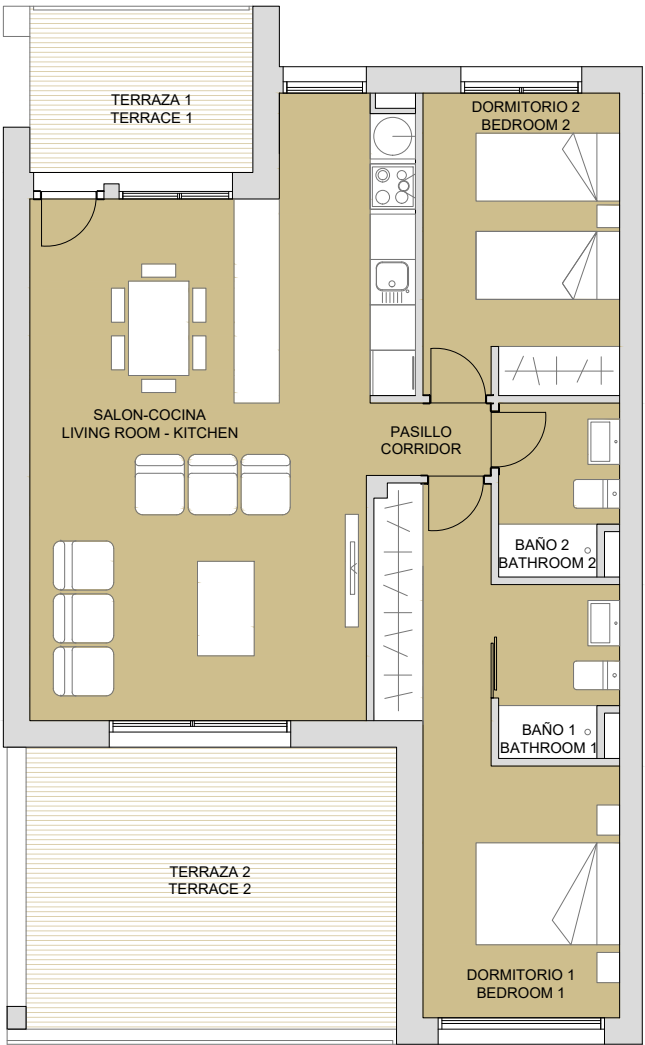
SUPERFICIES ÚTILES / OCCUPIABLE AREA

LIVING ROOM - KITCHEN	35.00 m2
PASO / CORRIDOR	1.55 m2
DORMITORIO 1 / BEDROOM 1	14.10 m2
BAÑO 1 / BATHROOM 1	3.50 m2
DORMITORIO 2 / BEDROOM 2	10.30 m2
BAÑO 2 / BATHROOM 2	3.50 m2

TERRAZA 1 / TERRACE 1	6.50 m2
TERRAZA 2 / TERRACE 2	19.75 m2

SUPERFICIES CONST. / BUILT AREA

SUP. CERRADA / CLOSED AREA	82.85 m2
CLOSED AREA + TERRACE	109.10 m2



CONTACT: 0034 650 834 472
info@binomiumproperties.com
www.binomiumproperties.com

PLAN SUBJECT TO POSSIBLE MODIFICATIONS FOR TECHNICAL OR LEGAL REASONS. THE MEASUREMENTS SHOWN ARE APPROXIMATE
 PLANO SUJETO A POSIBLES MODIFICACIONES DE INDOLE TÉCNICA O JURÍDICA. LAS SUPERFICIES SON APROXIMADAS

