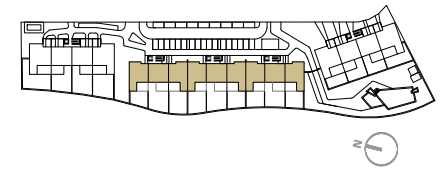


# RESIDENCIAL AZURE IV

LO ROMERO GOLF - PILAR DE LA HORADADA



## VIVIENDA TIPO V.92

### SUPERFICIES ÚTILES / OCCUPIABLE AREA

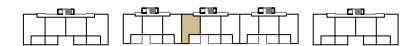
LIVING ROOM - KITCHEN	35.00 m2
PASO / CORRIDOR	1.55 m2
DORMITORIO 1 / BEDROOM 1	14.10 m2
BAÑO 1 / BATHROOM 1	3.50 m2
DORMITORIO 2 / BEDROOM 2	10.30 m2
BAÑO 2 / BATHROOM 2	3.50 m2

TERRAZA 1 / TERRACE 1	6.50 m2
TERRAZA 1 / TERRACE 1	16.75 m2
ESCALERA / STAIRS	4.25 m2
SOLARIUM	52.50 m2

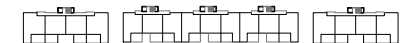
### SUPERFICIES CONST. / BUILT AREA

SUP. CERRADA / CLOSED AREA	82.85 m2
CLOSED AREA + TERRACE + SOLARIUM	158.60 m2

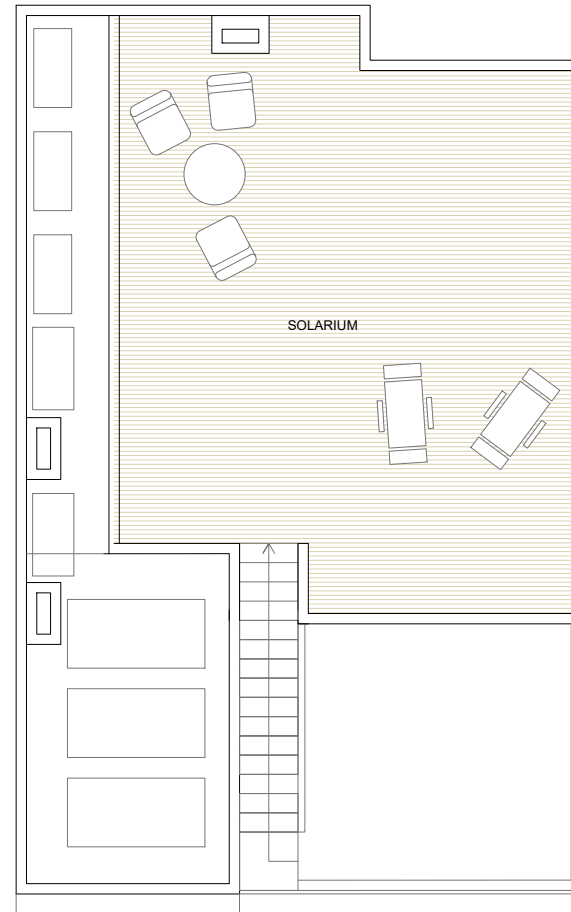
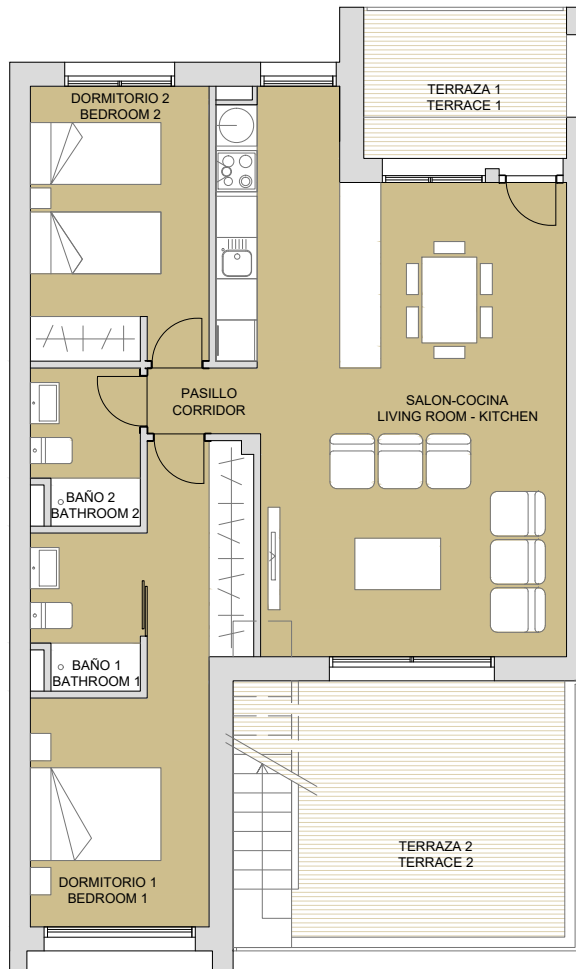
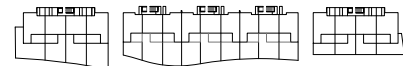
PLANTA SEGUNDA



PLANTA PRIMERA



PLANTA BAJA



PLAN SUBJECT TO POSSIBLE MODIFICATIONS FOR TECHNICAL OR LEGAL REASONS. THE MEASUREMENTS SHOWN ARE APPROXIMATE  
PLANO SUJETO A POSIBLES MODIFICACIONES DE ÍNDOLE TÉCNICA O JURÍDICA. LAS SUPERFICIES SON APROXIMADAS



CONTACT: 0034 650 834 472  
info@binomiumproperties.com  
www.binomiumproperties.com

