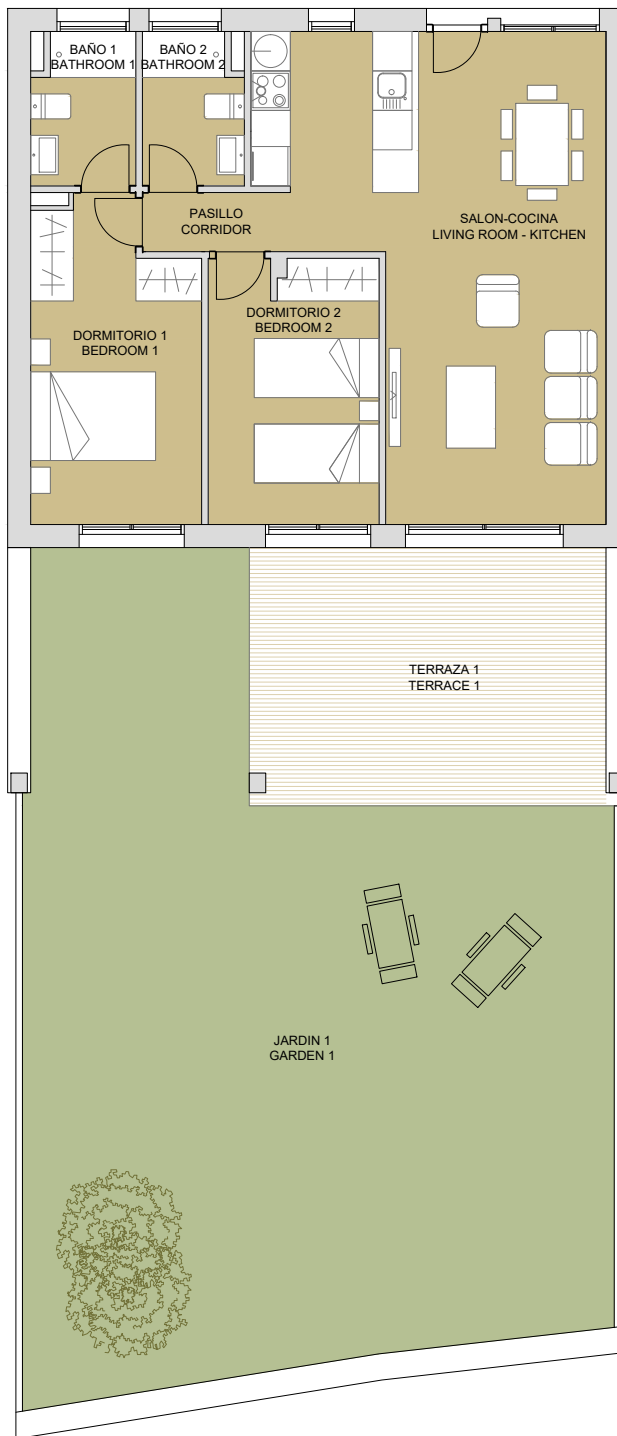
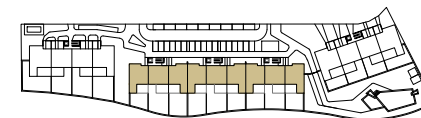


PLAN SUBJECT TO POSSIBLE MODIFICATIONS FOR TECHNICAL OR LEGAL REASONS. THE MEASUREMENTS SHOWN ARE APPROXIMATE  
 PLANO SUJETO A POSIBLES MODIFICACIONES DE INDOLE TÉCNICA O JURÍDICA. LAS SUPERFICIES SON APROXIMADAS



# RESIDENCIAL AZURE IV

LO ROMERO GOLF - PILAR DE LA HORADADA



## VIVIENDA TIPO V.93

SUPERFICIES ÚTILES / OCCUPIABLE AREA

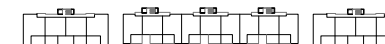
LIVING ROOM - KITCHEN	31.90 m2
PASO / CORRIDOR	1.50 m2
DORMITORIO 1 / BEDROOM 1	12.10 m2
BAÑO 1 / BATHROOM 1	3.55 m2
DORMITORIO 2 / BEDROOM 2	10.45 m2
BAÑO 2 / BATHROOM 2	3.40 m2

TERRAZA 1 / TERRACE 1	22.00 m2
JARDIN 1 / GARDEN 1	94.95 m2

SUPERFICIES CONST. / BUILT AREA

SUP. CERRADA / CLOSED AREA	74.60 m2
CLOSED AREA + TERRACE	96.60 m2
CLOSED AREA + TERRACE + GARDEN	191.55 m2

PLANTA SEGUNDA



PLANTA PRIMERA



PLANTA BAJA



CONTACT: 0034 650 834 472  
 info@binomiumproperties.com  
 www.binomiumproperties.com

