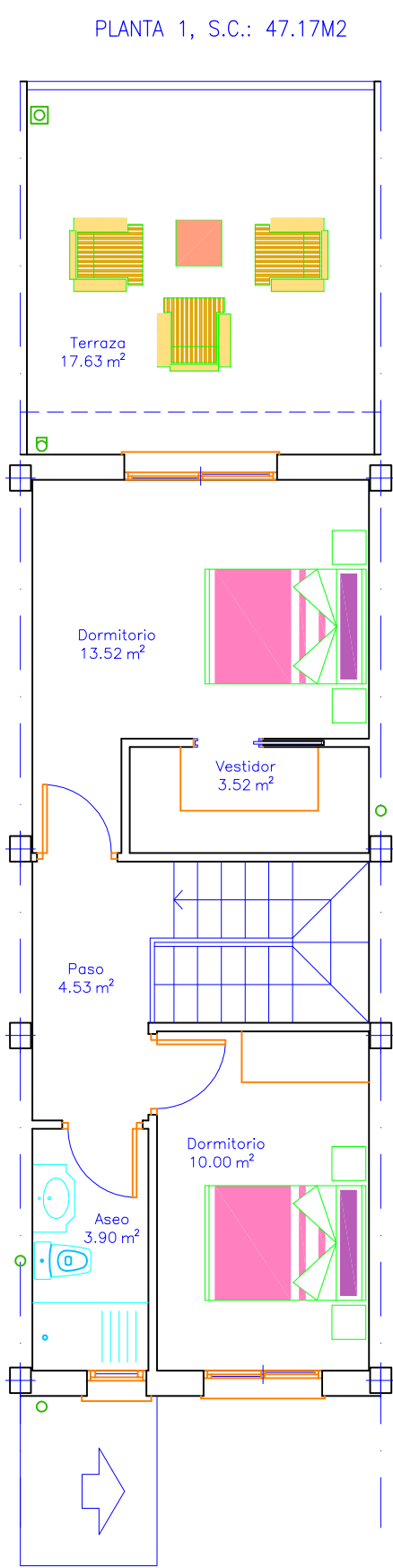
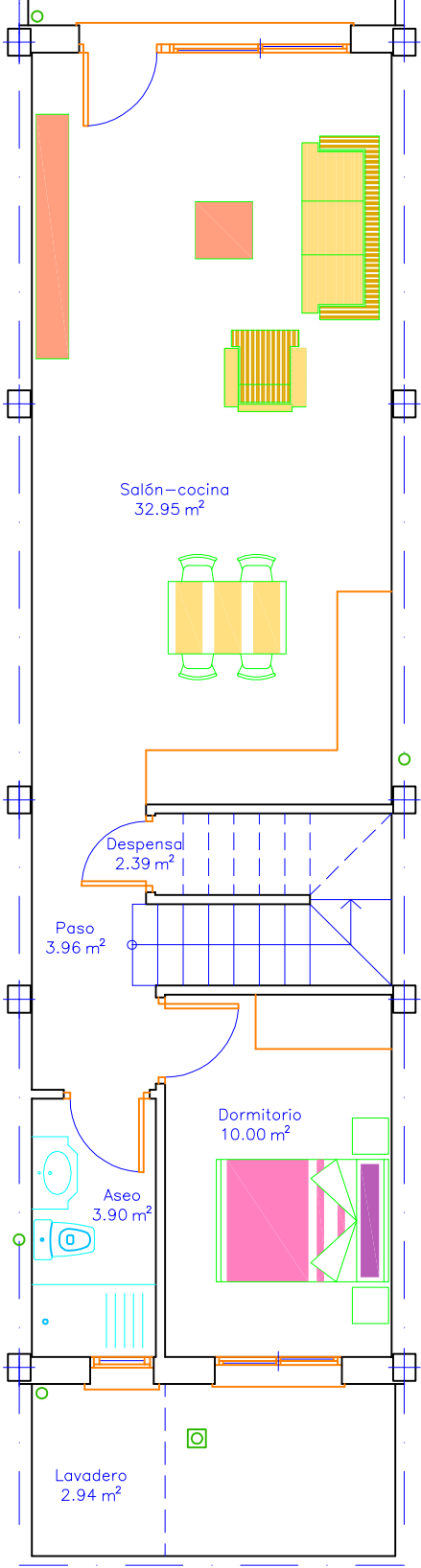
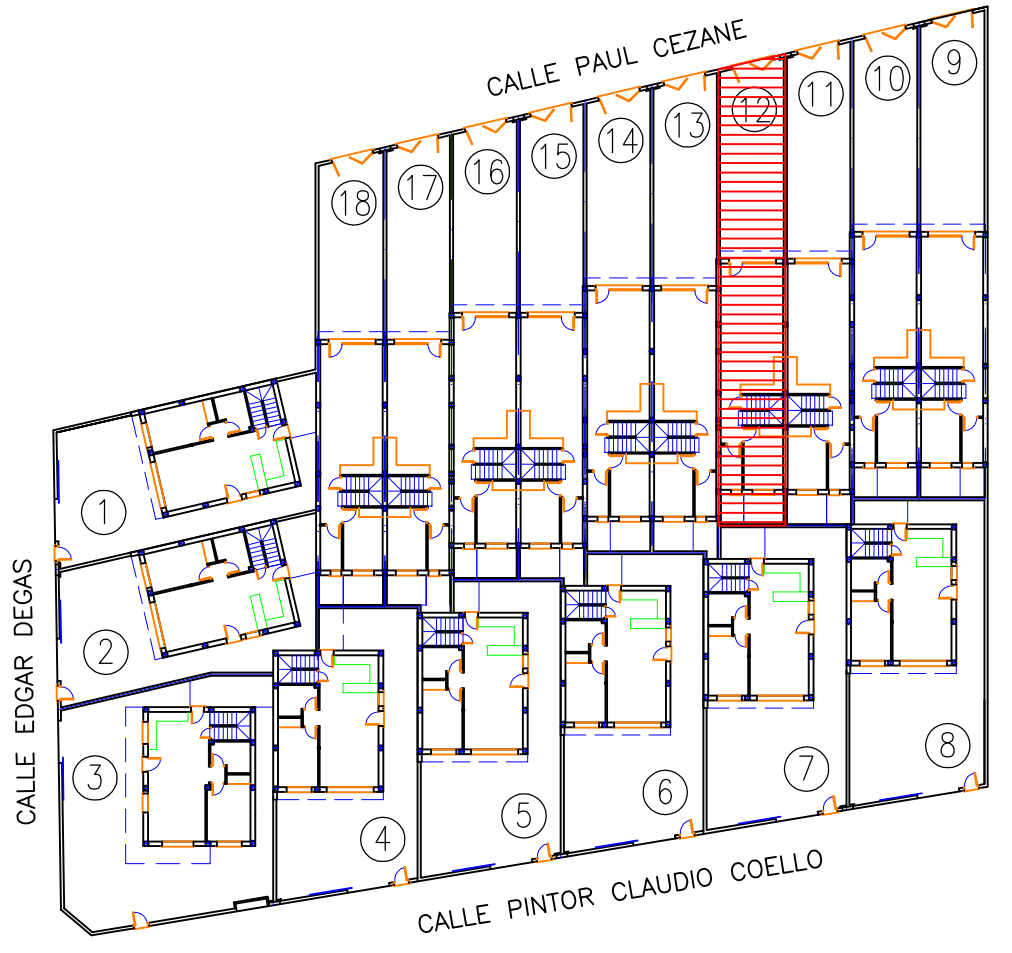


PLANTA 0, S.C.: 66.97 M2



PLANTA 1, S.C.: 47.17M2

VIVIENDA 12

- Sup. parcela=125,34m2
- Sup. construida=114,14m2
- Sup. terraza=17,63m2
- Sup. piscina=12,50m2



RESIDENCIAL
PALMERAS GOLD

PR **RODRIGO**
PROMOTORES