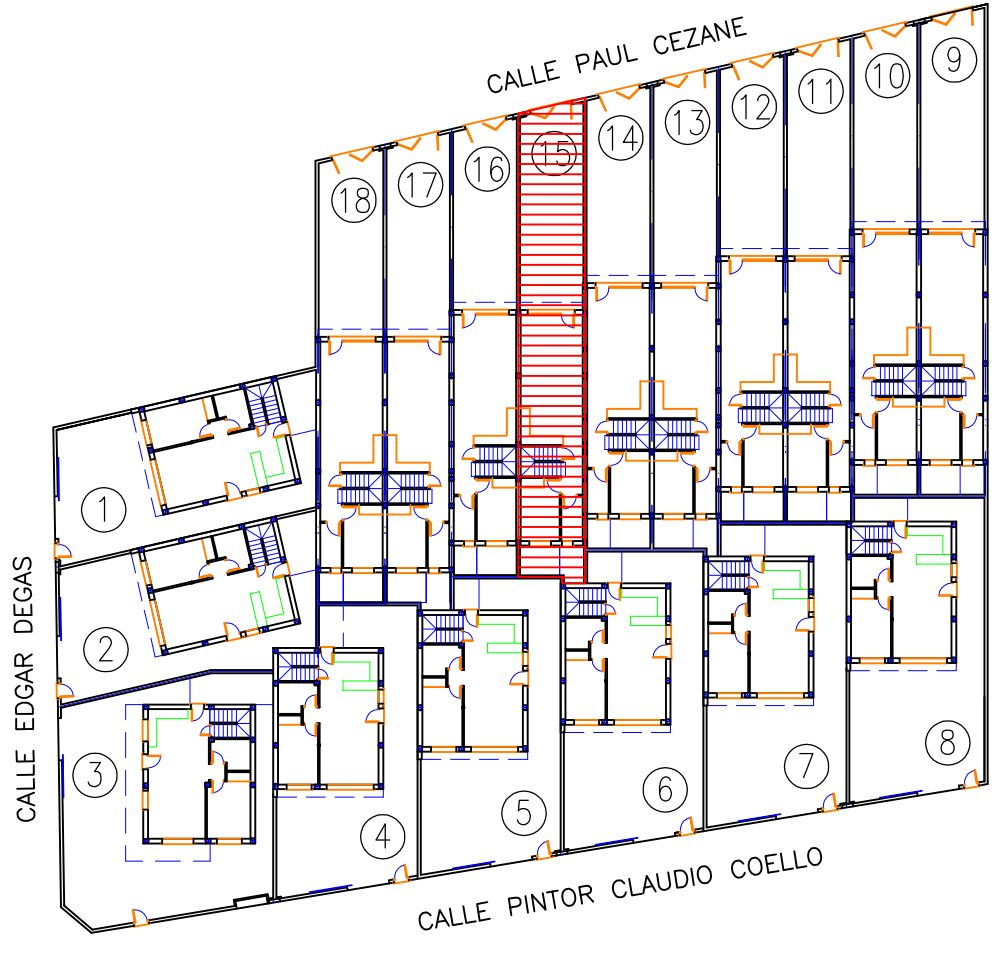
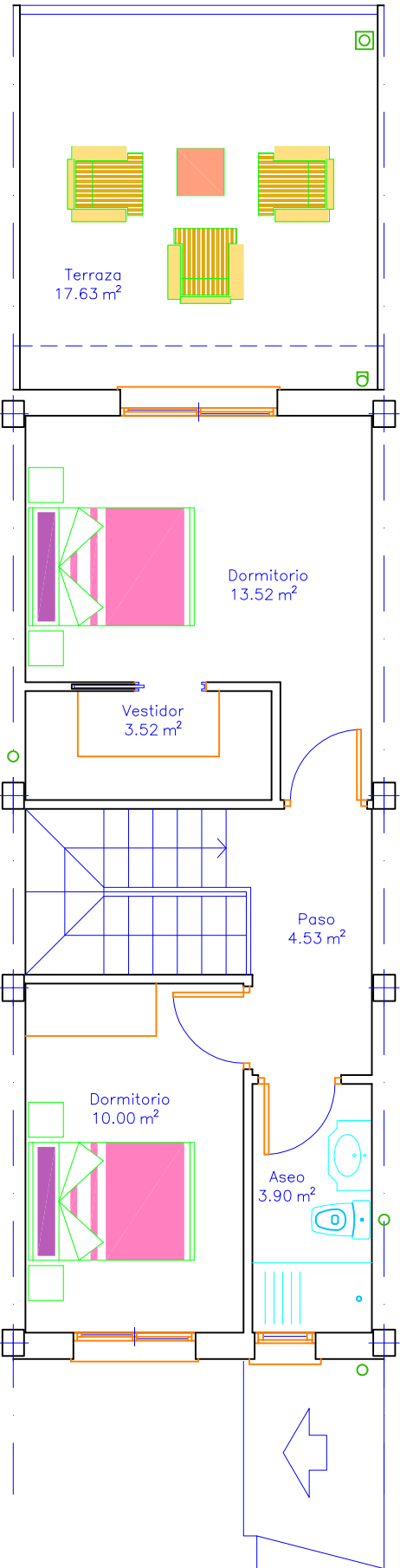


PLANTA 0, S.C.: 67.55M2



PLANTA 1, S.C.: 47.17M2



VIVIENDA 15

- Sup. parcela=127,84m²
- Sup. construida=114,72m²
- Sup. terraza=17,63m²
- Sup. piscina=12,50m²



RESIDENCIAL
PALMERAS GOLD

PR **RODRIGO**
PROMOTORES