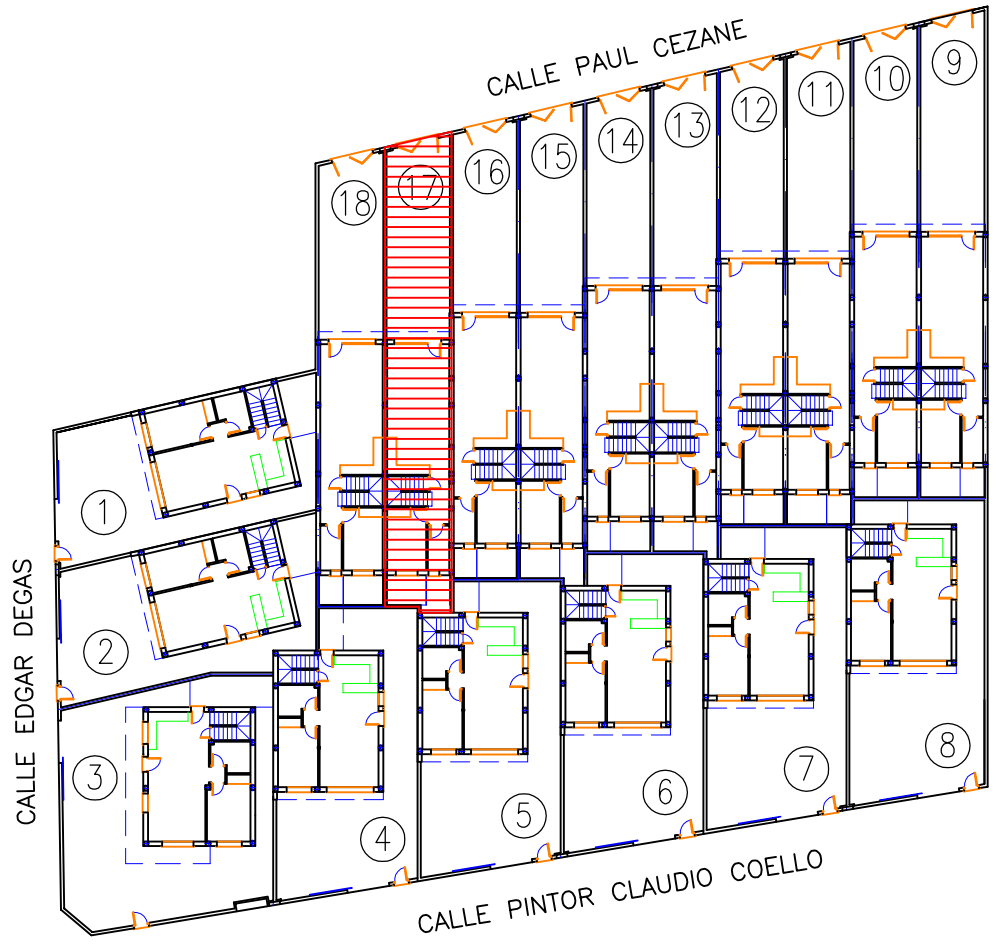
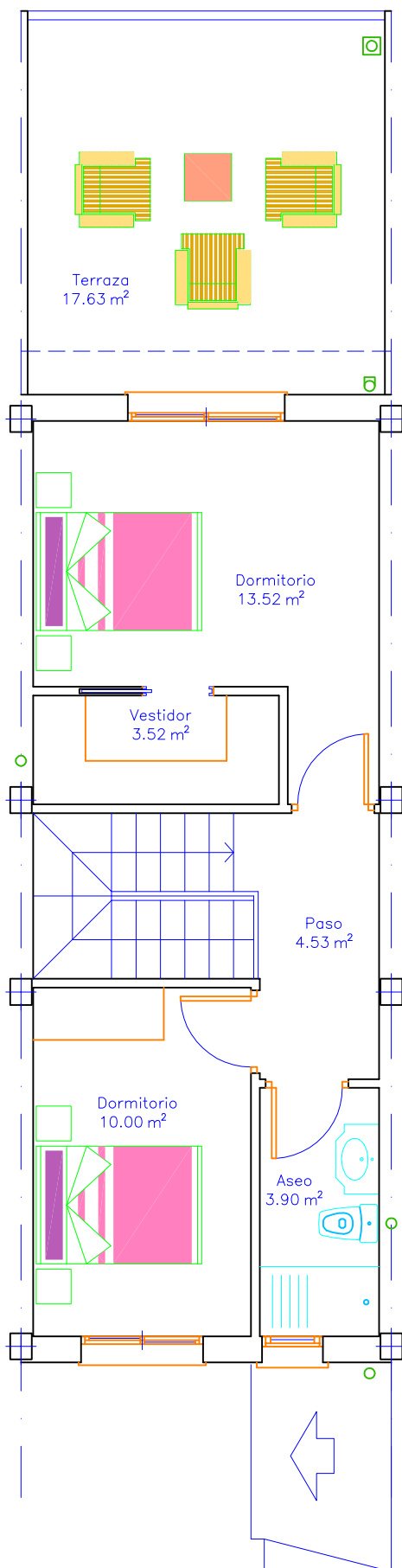


PLANTA 0, S.C.: 67.84M2



PLANTA 1, S.C.: 47.17M2



VIVIENDA 17

Sup. parcela=126,93m2
 Sup. construida=115,01m2
 Sup. terraza=17,63m2
 Sup. piscina=12,50m2



RESIDENCIAL
PALMERAS GOLD

PR **RODRIGO**
 PROMOTORES