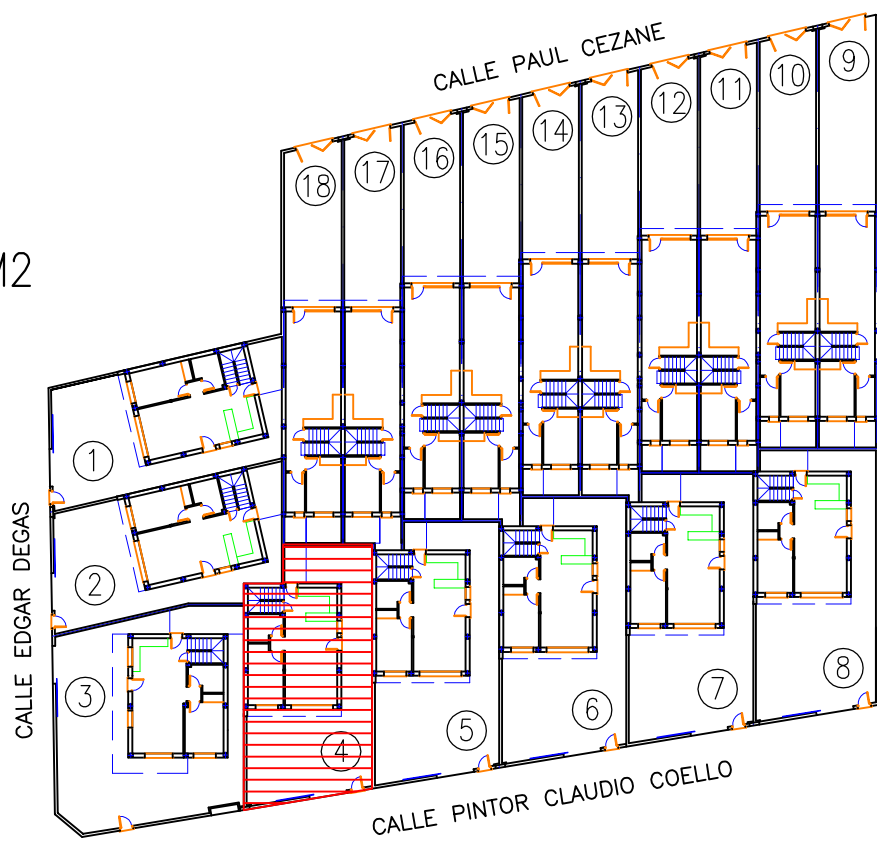


PLANTA 1  
S.C.= 46,20 M2

VIVIENDA 4

Sup. parcela=160,05m2  
 Sup. construida=113,81m2  
 Sup. terraza=18,74m2  
 Sup. piscina=12,00m2

PLANTA 0  
S.C.= 67,61 M2



RESIDENCIAL  
**PALMERAS GOLD**

PR **RODRIGO**  
PROMOTORES