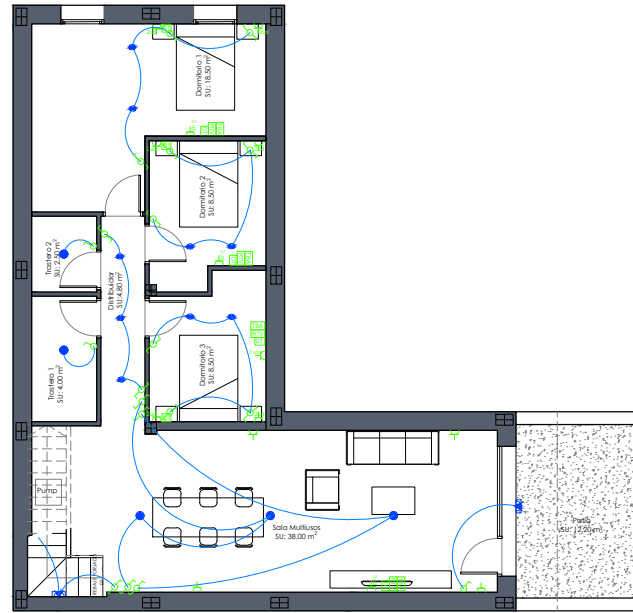


PLANTA SÓTANO

OPTION 01

- Stair flooring.
- Stair railing with brick wall finished with plaster.
- Plaster coating on stairs, walls and ceilings.
- Paint coating on walls and ceilings.
- Surface electrical installation.
- Pre-installation of water on the roof and sanitation.
- Pre-installation of air conditioning on the roof.

PRICE: 14.900 €

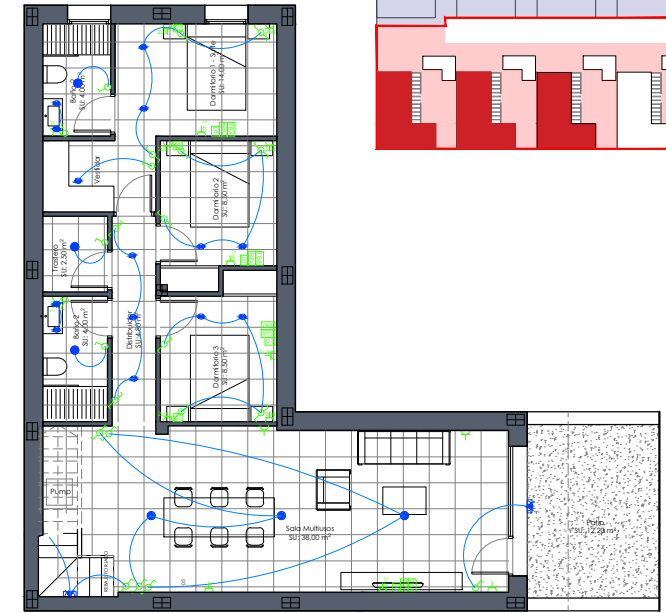


PLANTA SÓTANO

OPCION 02

- Stair flooring.
- Skirting on floor with walls.
- Stair railing with brick wall finished with plaster.
- Continuous false ceiling of laminated plasterboard.
- Paint coating on walls and ceilings.
- Embedded electrical installation.
- Pre-installation of sanitation. Bathroom option.
- Pre-installation of water on the roof. Bathroom option.
- Pre-installation of air conditioning on the roof.
- Forced ventilation

PRICE: 34.900 €



PLANTA SÓTANO

OPCION 03_EXTRAS

- Bathroom unit in the basement including pump.
PRICE 1 unit: 6.900€
PRICE 2 units: 12.250€
- Pavement the same as the rest of the house.
PRICE: 9.900 €
- Wardrobes in bedrooms of the same quality as the rest of the home.

PRICE 1 unit: 1.200€
PRICE 3 units: 3.300€