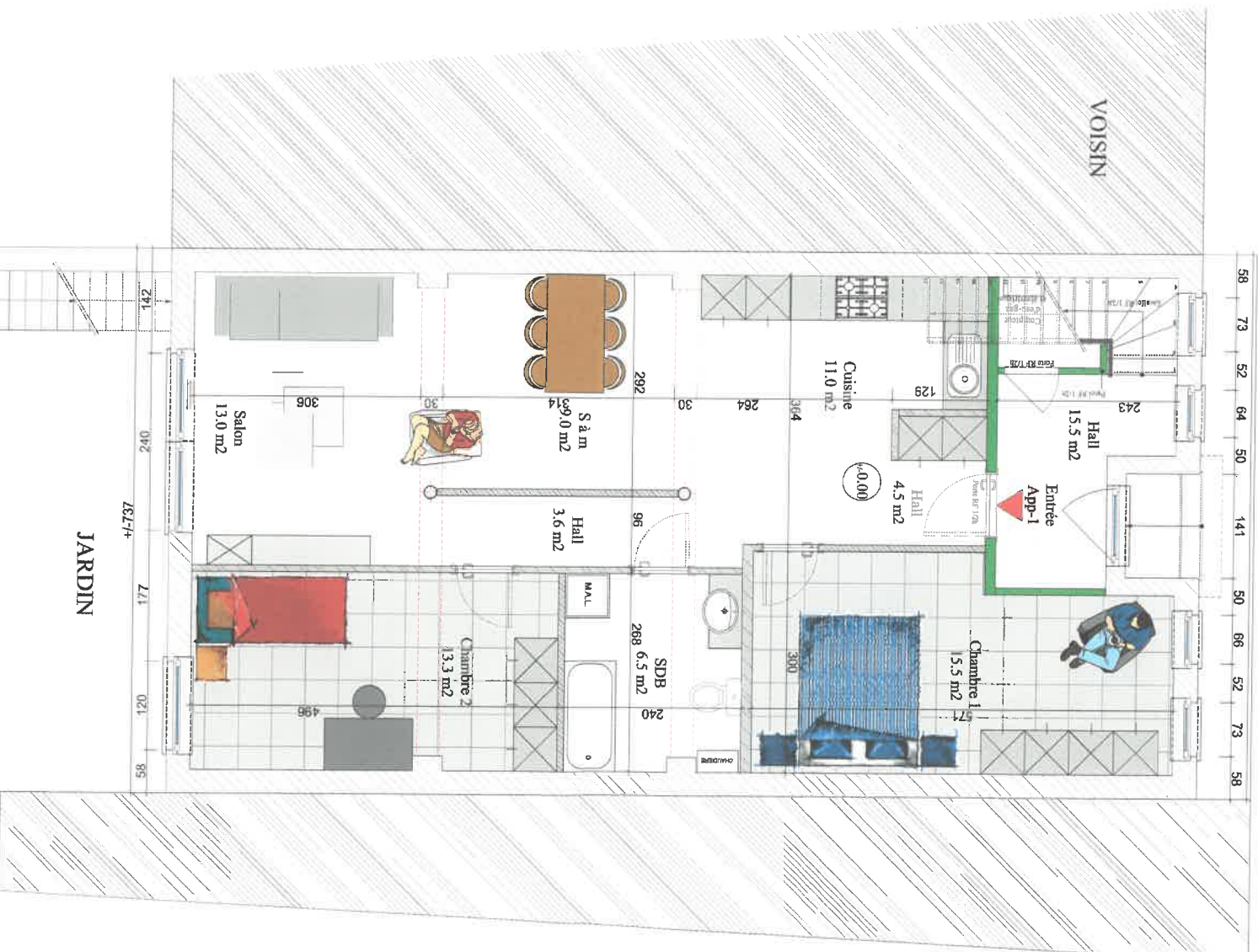


RUE DE LA MONTAGNE

TROTTOIRE

+1.737



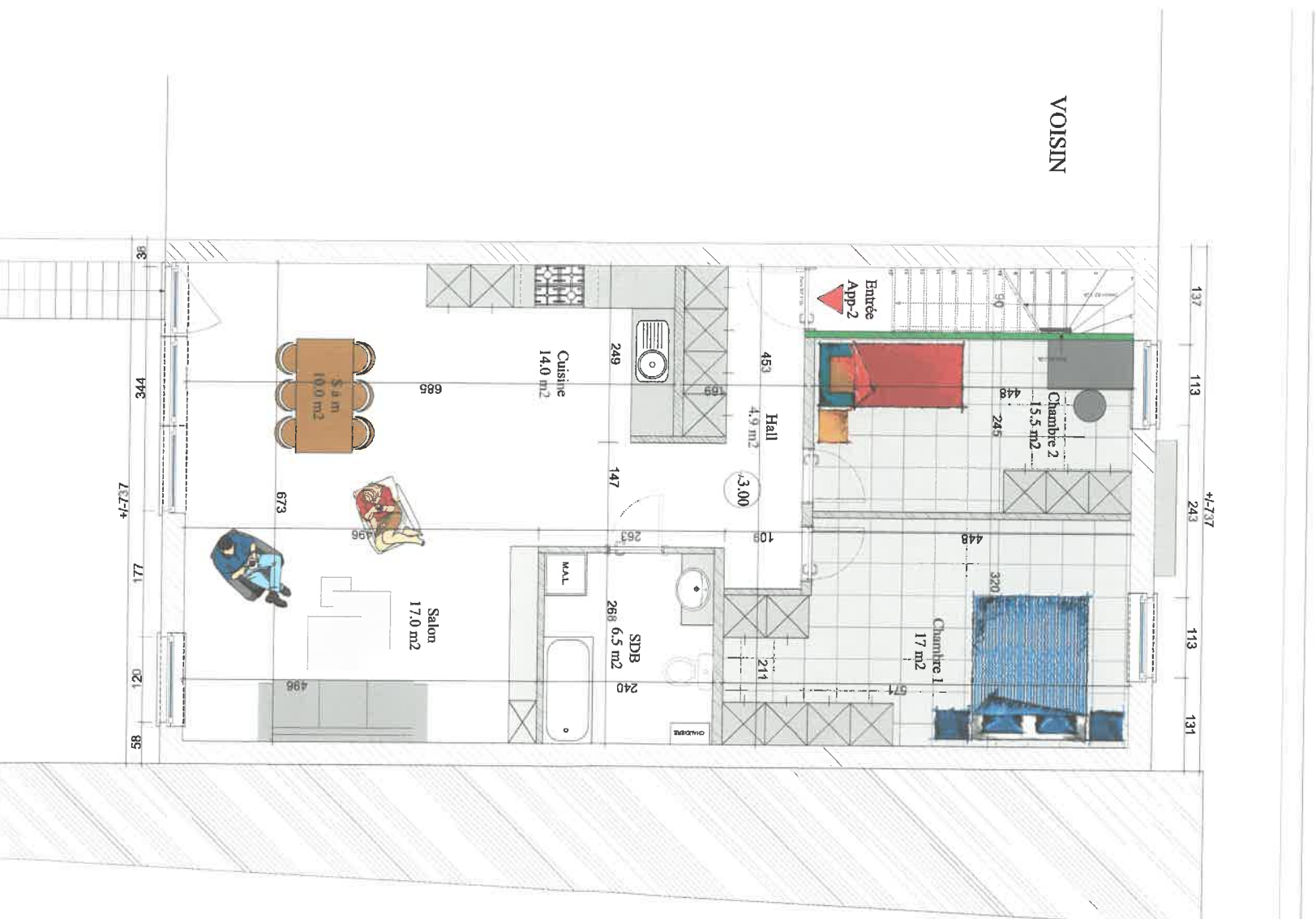
APPARTEMENT-1
78.4 m² net

REZ-DE-CHAUSSEE



*po/BD 20/1/2014
du 2/05/2014*

RUE DE LA MONTAGNE



APPARTEMENT-1
85.0 m2 net

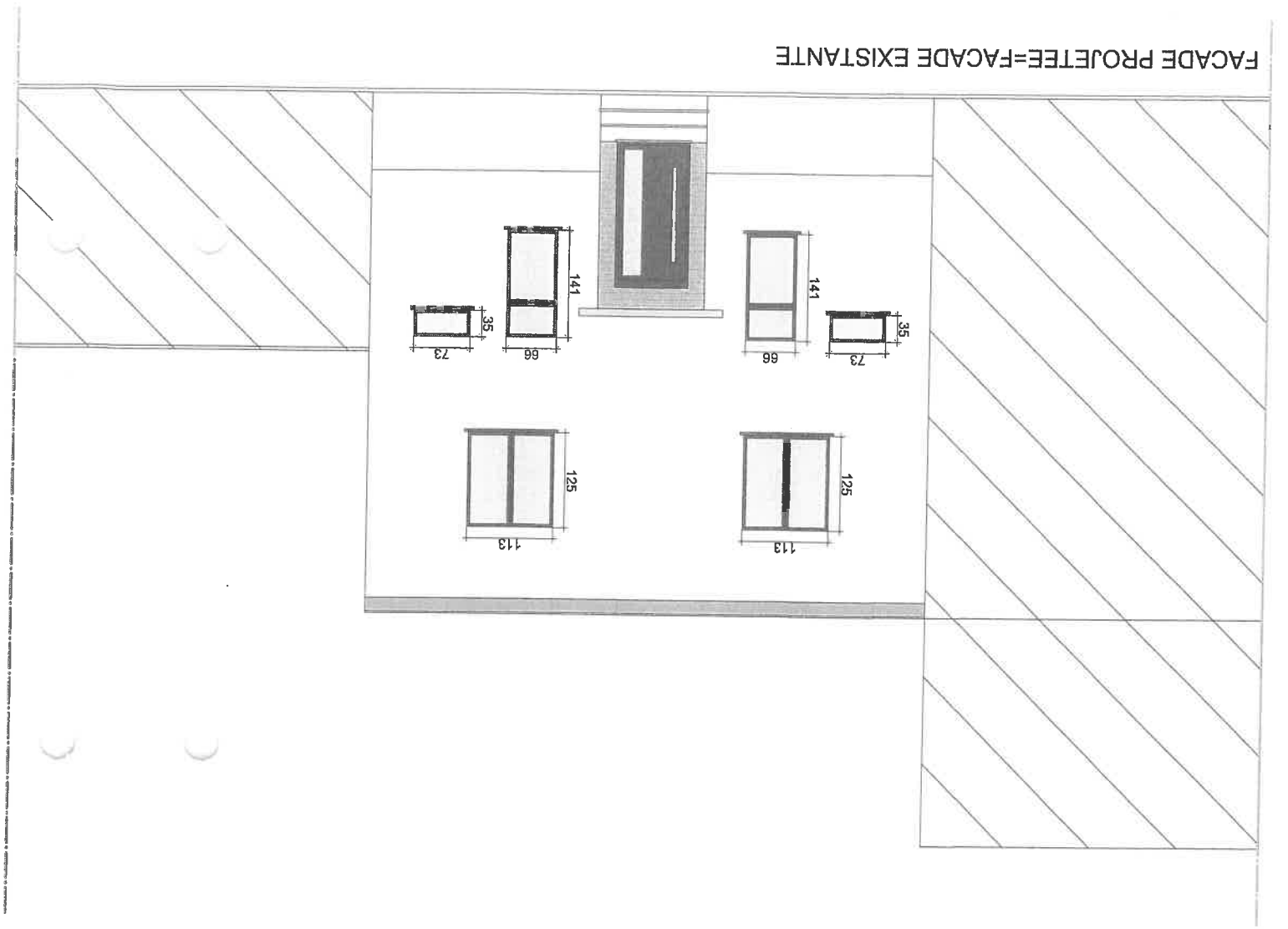
1er ETAGE



Handwritten signature in blue ink.

FACADE AVANT 1/50

FACADE PROJETEE=FACADE EXISTANTE



FACADE ARRIERE 1/50

