

Due to the forecast, Rec programming has been cancelled for tomorrow.
Please review the Borough's snow emergency page and remove cars from snow emergency streets before plowing begins.
www.rutherfordboronj.com/resident-info/snow-emergency-info

From the Desk of Mayor Frank Nunziato

As the weather remains cold, the ice skating rink is in full swing and being enjoyed by many of our residents. I encourage everyone to take advantage of this while temperatures permit. I'd like to thank Council President Goldsack, the Recreation Department and the DPW for making the ice skating rink become a reality in record time.

Anyone interested in skating needs to purchase a one-time seasonal skate badge by [visiting RecDesk](#). The fee schedule is modeled after the seasonal tennis badge program. These fees help pay for the Skating Marshals who monitor the ice quality and participants.

As the winter progresses, DPW Superintendent Chris Seidler would like residents to know that, as temperatures remain low, sub-freezing temps impact street-sweeping equipment performance. The sweepers will not go out to prevent equipment damage. Please note, this does not impact whether or not you move your vehicle for alternate side parking. The decision to suspend alternate side parking is made by the Rutherford Police Department.

Also, at Monday's meeting I began the annual process to appoint Board, Commission and Committee members. These appointments typically happen over the course of two Mayor and Council meetings. I'd like to thank all the residents who went through the application process and who generously want to give their time and talents to move Rutherford into the 21st century. I look forward seeing what new perspectives all our volunteers can add to the Borough this year!

Sincerely,
Mayor Frank Nunziato



First quarter property taxes are due February 1st with a grace period to February 10th

Payments can be made via US mail, the drop box located to the left of the Donaldson Avenue entrance, or the online portal through the Borough website.



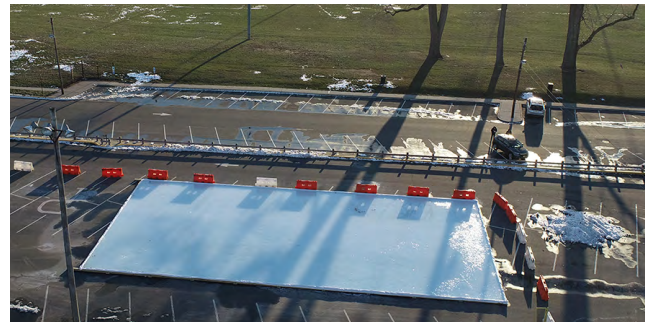
Help shape the future of The Rutherford Public Library!
Take the Strategic Planning Committee's survey at

www.rutherfordlibrary.org
or visit the Library at 150 Park Ave

Ice Skating is Back at Memorial Field! **Hours of Operation**

Monday - Friday 4pm - 8pm
Saturday & Sunday 12pm - 6pm

(Weather and Ice Conditions Permitting)



- **ICE SKATE AT YOUR OWN RISK**
- **Beware of uneven surfaces/snow covered ice**
- **Never skate alone**
- **Children should be accompanied by an adult**
- **No organized Ice Hockey**
- **Alcohol beverages prohibited**
- **No pets on the ice**

Badge purchase required!

Purchase your badge at

rutherfordnj.recdesk.com

Residents 17 and younger: \$5

Residents 18 and older: \$20

Non-Residents: \$30



On Twitter:
@Rutherford07070



On Facebook:
Borough of Rutherford NJ

January 28, 2022

Council President Mark Goldsack

mgoldsack@rutherfordboronj.com

Recreation Department: The Recreation Department continues to create great programming with the Heart Healthy Campaign for February which includes free family dance, swim and yoga classes.

Sign up for these programs at RecDesk and reserve your spot today:

<https://rutherfordnj.recdesk.com/Community/Program>

Councilman Tom Mullahey

tmullahey@rutherfordboronj.com

Health Dept: The Council approved hazard pay for the Health Department nurses. Through the American Relief Act we will pay the nurses for after hour and weekend COVID-19 reporting and contact tracing. We have done this at times in 2020 from CARES act funding and 2021 from our budget. We will again pay with federal funding.

Police Dept: I'd like to wish Lt. Nick Moore a happy retirement from the RPD and best of luck in the future!

Due to construction, a portion of sidewalk on the south east end of Chestnut Street will be closed for the foreseeable future. If possible please plan an alternate route when walking in the area.

Councilwoman Stephanie McGowan

smcgowan@rutherfordboronj.com

The Rutherford Stigma Free Committee in conjunction with the Mayor's Wellness Program, Recreation Department, and Bergen County Prevention Coalition will be offering "Hidden in Plain Sight," Monday, February 7, 2022 at 7pm. This virtual adult program will be addressing how parents and adults can identify drug paraphernalia, hiding places, lingo, signs, and symptoms that may indicate alcohol or other drug use by a teen or young adult. Registration is required to attend: <https://bit.ly/3zExnPI>

Please register for this needed and important discussion and let's work together to help our young adults in crisis.

55 Kip Center:

The 55 Kip Center is currently offering winter session classes that run through April 14th. If you are interested in becoming a member of this amazing senior community, please contact the Director Cathy Baviello at 201-460-1600.

Winter is here! The owner, tenant or occupant of any lands with public sidewalks in the Borough of Rutherford, shall remove all snow and ice from those sidewalks within 12 hours of daylight after all storms.



Councilman Matthew Cokeley

mcokeley@rutherfordboronj.com

The Borough, in partnership with the Arts Council, will once again be hosting the **Youth Arts Banner program**.

If you're interested in participating you can [register through RecDesk](#) or contact Katie Pippin at rutherfordartscouncil@gmail.com. Text or call with any questions 848-219-1167.

Artists under 18 and family submissions are welcome to email a hi-res photo of the final 8.5x11 vertical artwork. Artwork deadline is February 10th. Participation fee is \$60.

Councilman Ray Guzman

rguzman@rutherfordboronj.com

Rutherford Public Library Community Survey

The deadline to fill out Rutherford Public Library's community survey is Monday, January 31. Please consider sharing your thoughts to help shape the future of the library, whether you currently utilize it or not: <https://forms.gle/r8CFyPZSiEGjeQ1N7>

Scholarship Opportunity

The Library is currently accepting applications from Rutherford students for consideration in the Elize Aunahn Memorial Brainfuse Scholarship. Two students will be selected based on leadership qualities, community involvement, and financial need for submission to the national contest and a chance at \$4,000 towards college or trade school. Current juniors and seniors may apply here: <https://forms.gle/9dBAk85wUpQXDft29>



Help shape the future of The Rutherford Public Library!
Take the Strategic Planning Committee's survey at

www.rutherfordlibrary.org
or visit the Library at 150 Park Ave