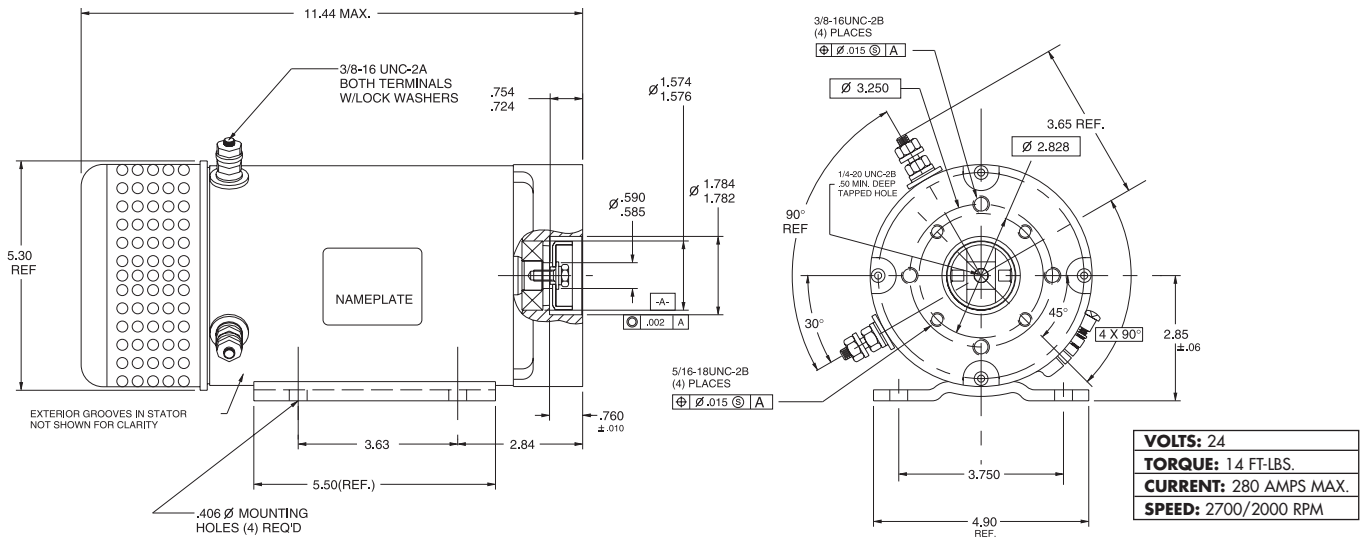


## 5" DIAMETER SERIES WOUND MOTOR

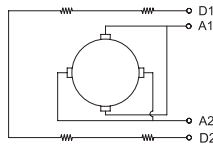


## 6.7" DIAMETER SERIES WOUND MOTORS

ROTATION - REVERSIBLE

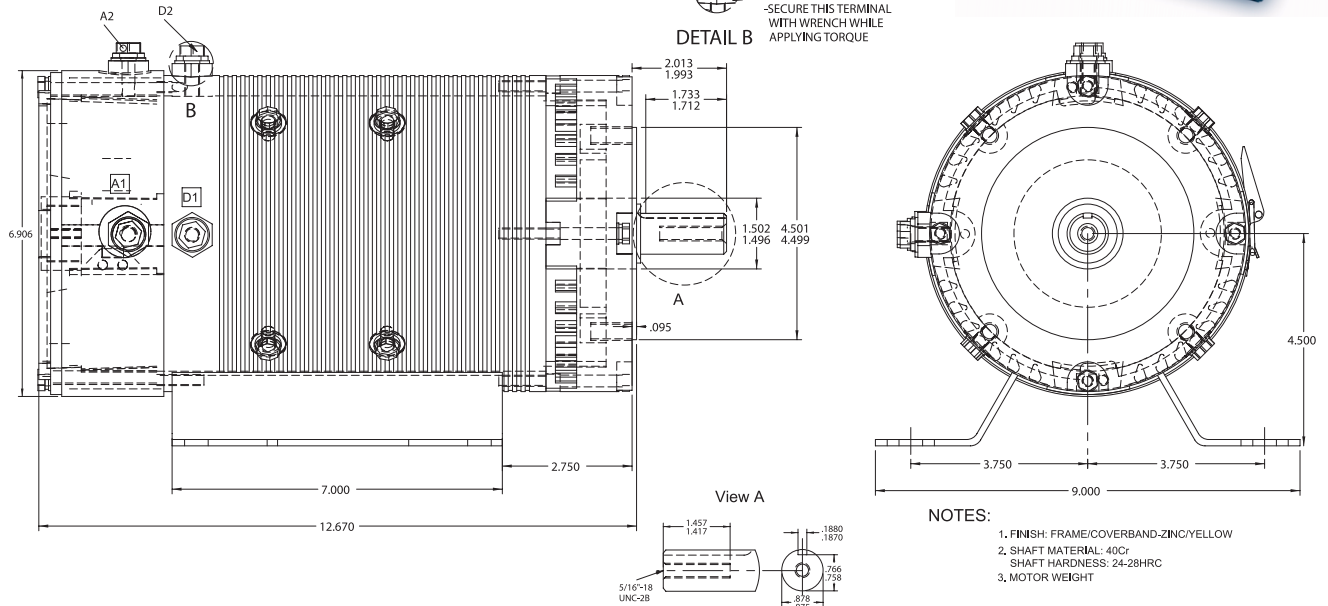
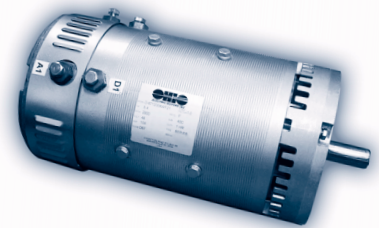
C.W.C.E.H  
CONNECT D1 TO ONE BATTERY TERMINAL  
CONNECT D2 TO A2  
CONNECT A1 TO OTHER BATTERY TERMINAL

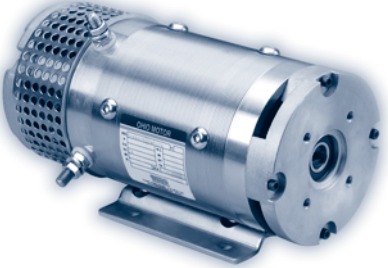
C.C.W.C.E.H  
CONNECT D1 TO ONE BATTERY TERMINAL  
CONNECT D2 TO A1  
CONNECT A2 TO OTHER BATTERY TERMINAL



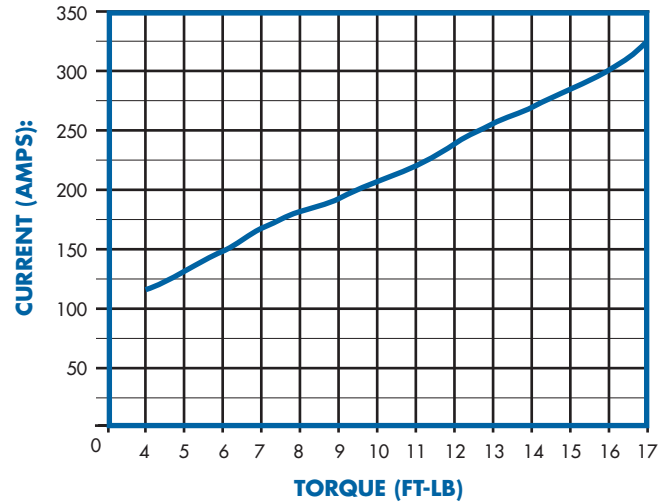
**DETAIL B**

- MOTOR CABLE SECURING SCREW MBx14, CLASS 8.8, 16-20Nm
- SPRING WASHER
- FLAT WASHER
- TERMINAL
- SECURE THIS TERMINAL WITH WRENCH WHILE APPLYING TORQUE

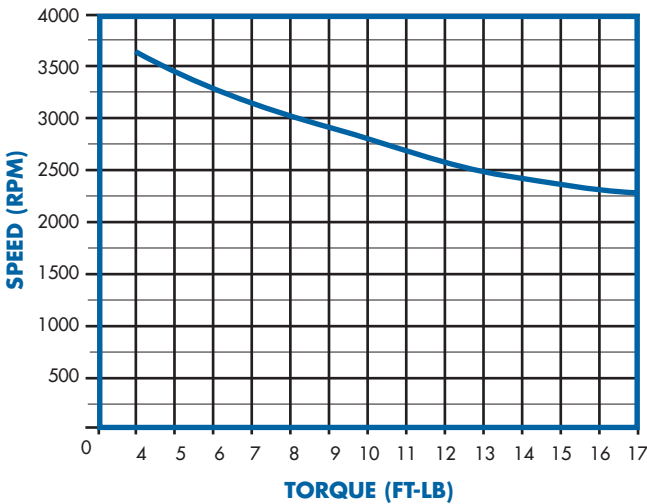




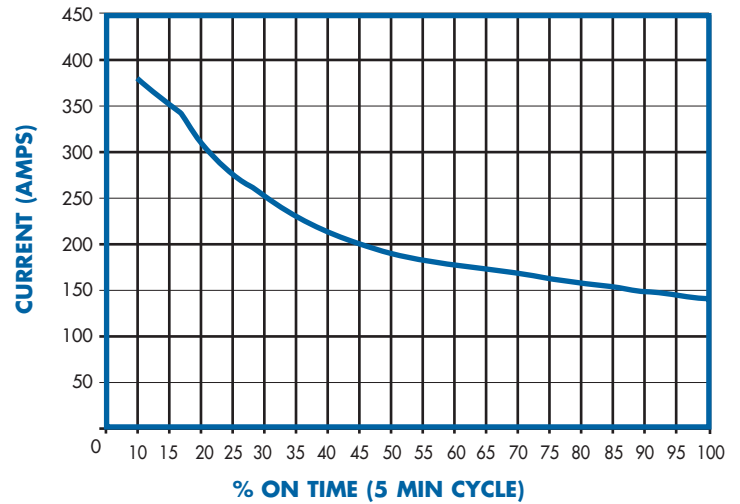
**CURRENT VS TORQUE FOR 24 VOLT 5 INCH WOUND FIELD MOTOR**



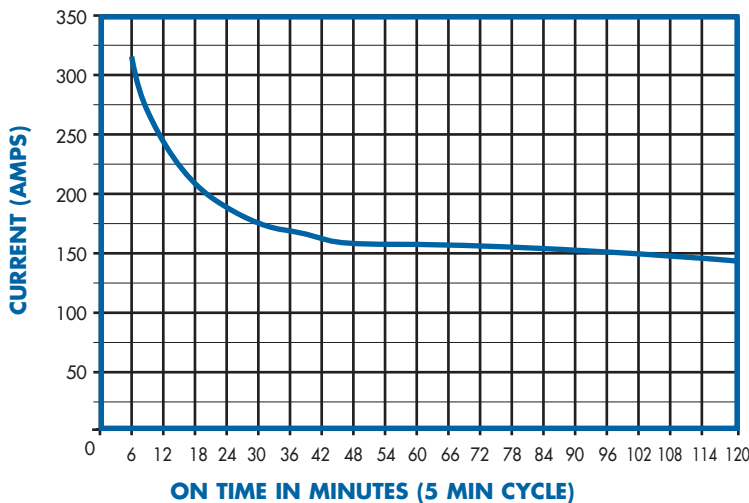
**SPEED VS TORQUE FOR 24 VOLT 5 INCH WOUND FIELD MOTOR**



**S3 CURVE FOR 24 VOLT 5 INCH WOUND FIELD MOTOR**

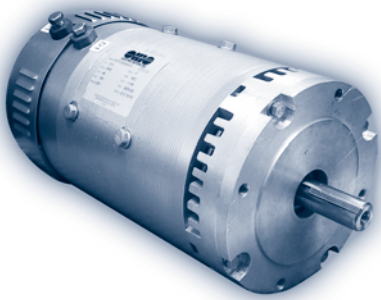


**S2 CURVE FOR 24 VOLT 5 INCH WOUND FIELD MOTOR**

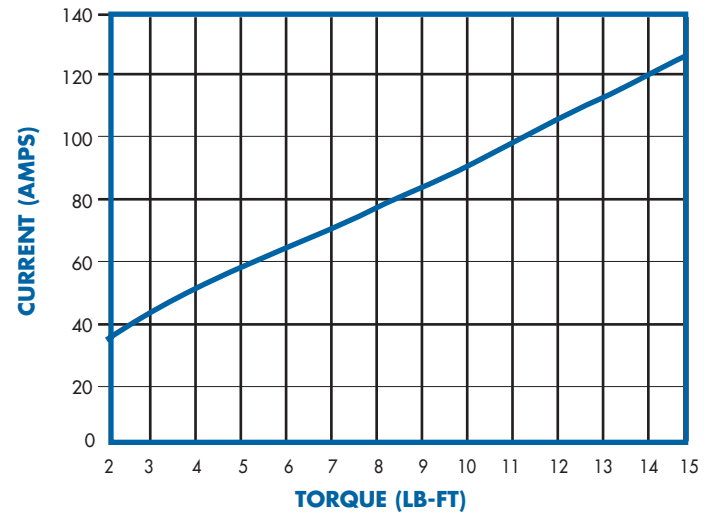


## 6.7 INCH WOUND FIELD MOTOR TEST DATA COLLECTED AT 24 VDC.

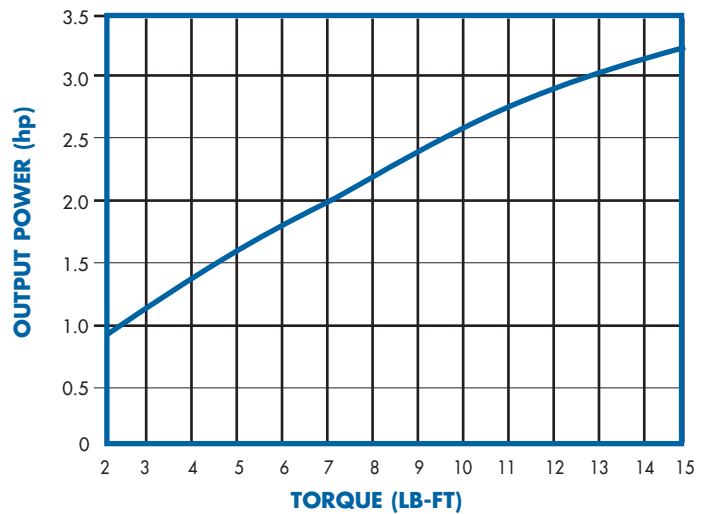
rpm	volts	torque	current	hp	losses
2458	24	2	34.7	0.9	134.53
2128	24	3	44.0	1.2	148.01
1901	24	4	52.1	1.4	169.36
1735	24	5	59.7	1.7	199.87
1616	24	6	67.1	1.8	232.93
1527	24	7	73.9	2.0	256.28
1450	24	8	81.2	2.2	299.92
1390	24	9	87.8	2.4	329.31
1336	24	10	94.7	2.5	374.65 1 hr duty
1291	24	11	101.0	2.7	407.59
1249	24	12	107.5	2.9	451.57
1210	24	13	113.8	3.0	496.89
1173	24	14	120.5	3.1	559.40
1140	24	15	126.9	3.3	615.50



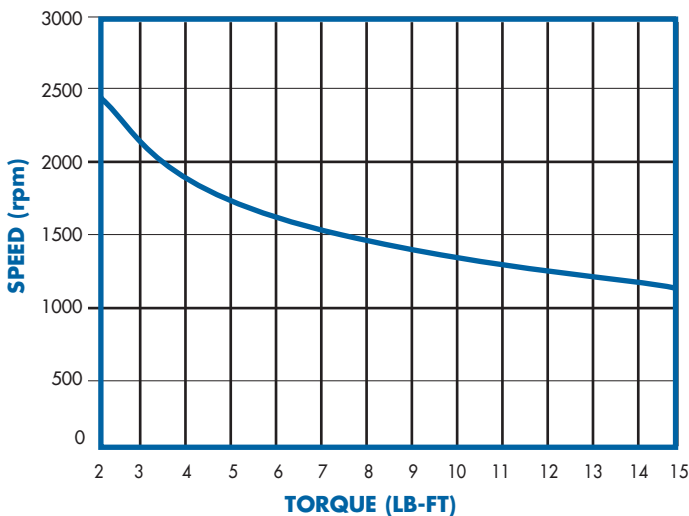
### 6.7 INCH 24 VOLT CURRENT VS TORQUE



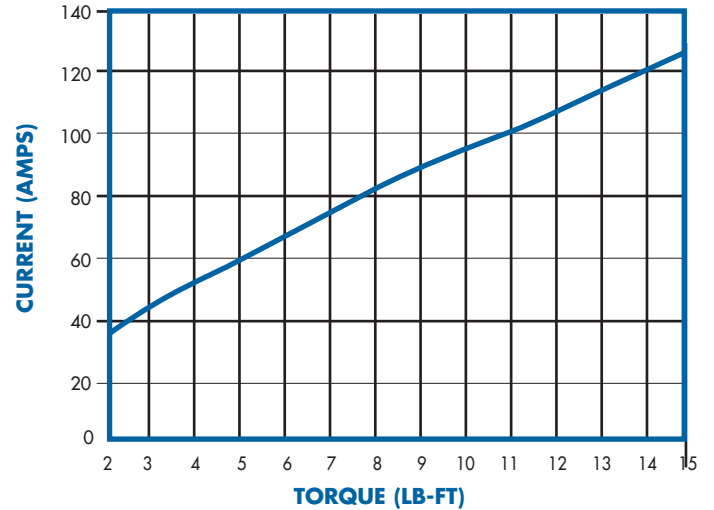
### 6.7 INCH 24 VOLT HP VS TORQUE



### 6.7 INCH 24 VOLT SPEED VS TORQUE



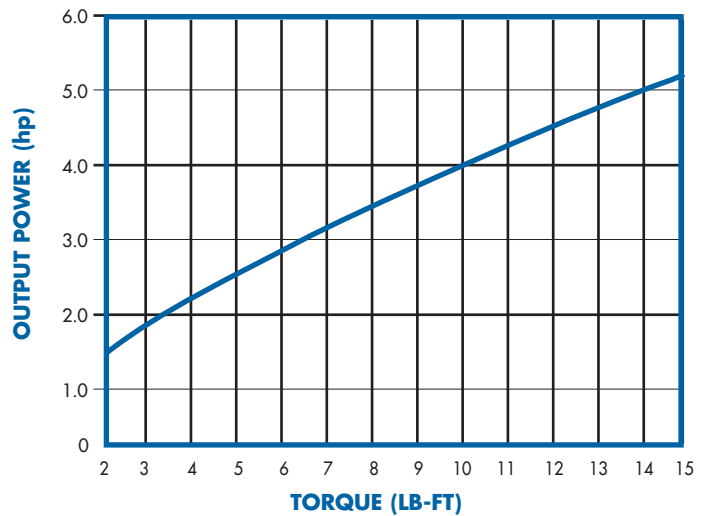
## 6.7 INCH 36 VOLT CURRENT VS TORQUE



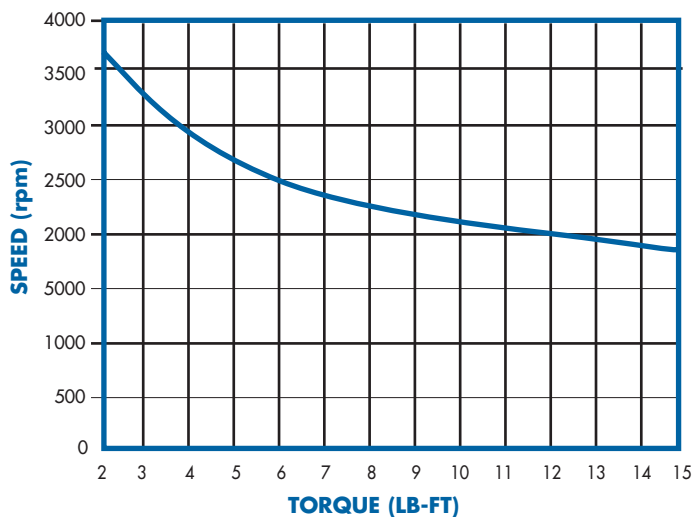
## 6.7 INCH WOUND FIELD MOTOR TEST DATA COLLECTED AT 36 VDC.

rpm	volts	torque	current	hp	losses
3658	36	2	35.8	1.4	249.63
3235	36	3	44.0	1.8	205.49
2936	36	4	52.7	2.2	229.07
2682	36	5	60.1	2.6	258.83
2507	36	6	67.4	2.9	289.82
2386	36	7	73.9	3.2	288.03
2265	36	8	81.5	3.5	360.21
2187	36	9	87.7	3.7	361.40
2107	36	10	94.7	4.0	416.39 1 hr duty
2043	36	11	101.1	4.3	447.51
1982	36	12	108.0	4.5	509.69
1937	36	13	113.2	4.8	498.46
1883	36	14	120.3	5.0	586.31
1842	36	15	126.3	5.3	622.20

## 6.7 INCH 36 VOLT HP VS TORQUE



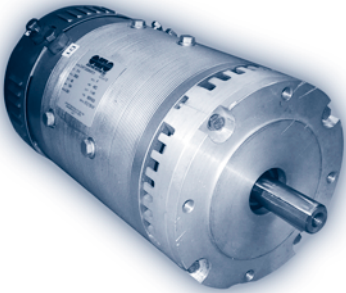
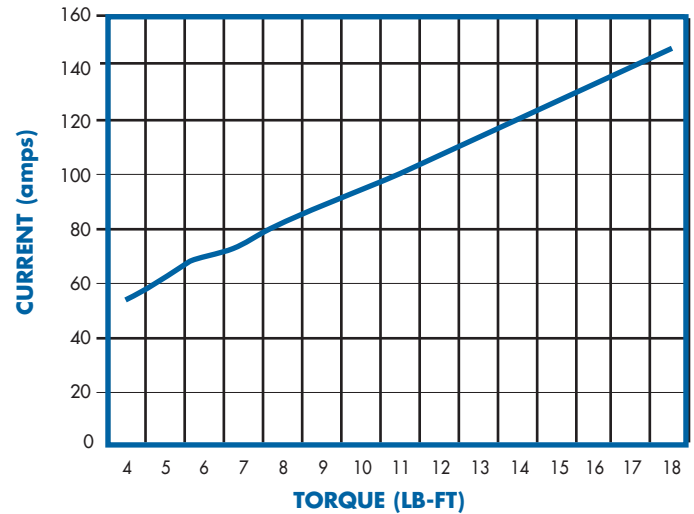
## 6.7 INCH 36 VOLT SPEED VS TORQUE



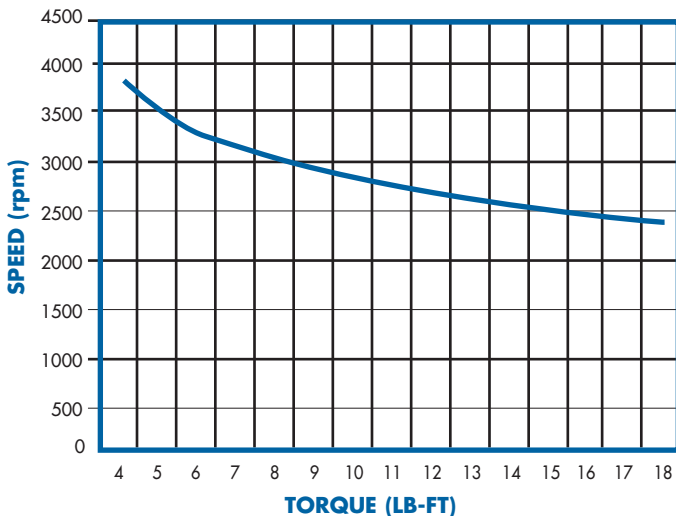
## 6.7 INCH WOUND FIELD MOTOR TEST DATA COLLECTED AT 48 VDC.

rpm	volts	torque	current	hp	losses
3862	48	4	53.1	2.9	354.55
3560	48	5	61.1	3.4	404.47
3339	48	6	68.9	3.8	461.55
3218	48	7	73.8	4.3	342.78
3063	48	8	81.8	4.7	445.82
2950	48	9	87.9	5.1	448.01
2855	48	10	94.2	5.4	466.33 1 hr duty
2765	48	11	101.0	5.8	527.82
2697	48	12	107.0	6.2	539.94
2627	48	13	114.0	6.5	621.15
2577	48	14	120.0	6.9	635.44
2513	48	15	126.9	7.2	736.96
2468	48	16	132.9	7.5	770.28
2424	48	17	139.0	7.8	818.77
2374	48	18	146.0	8.1	938.30

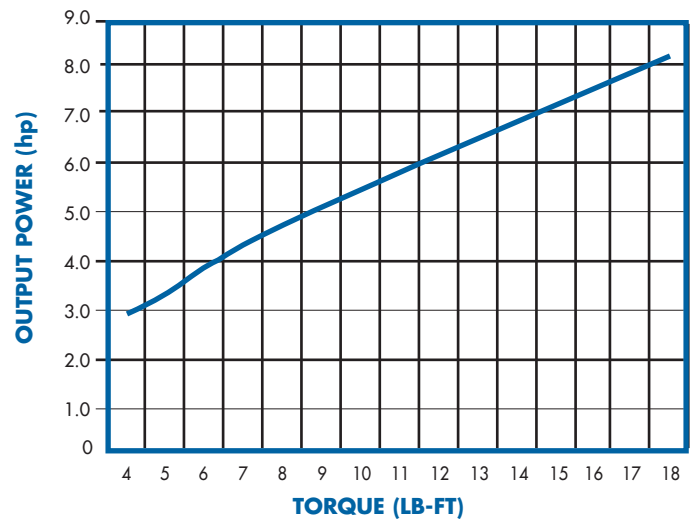
### 6.7 INCH 48 VOLT CURRENT VS TORQUE



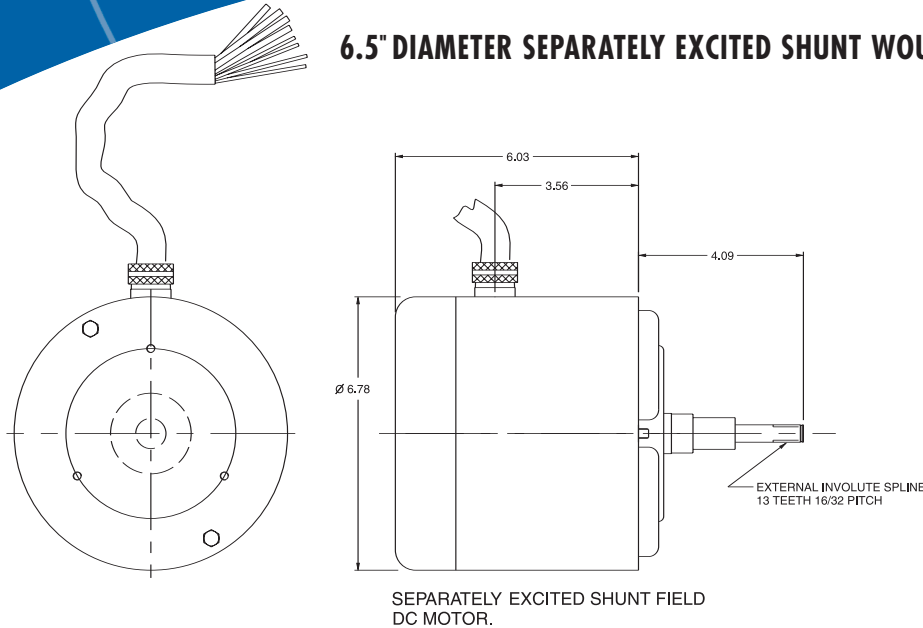
### 6.7 INCH 48 VOLT SPEED VS TORQUE



### 6.7 INCH 48 VOLT HP VS TORQUE



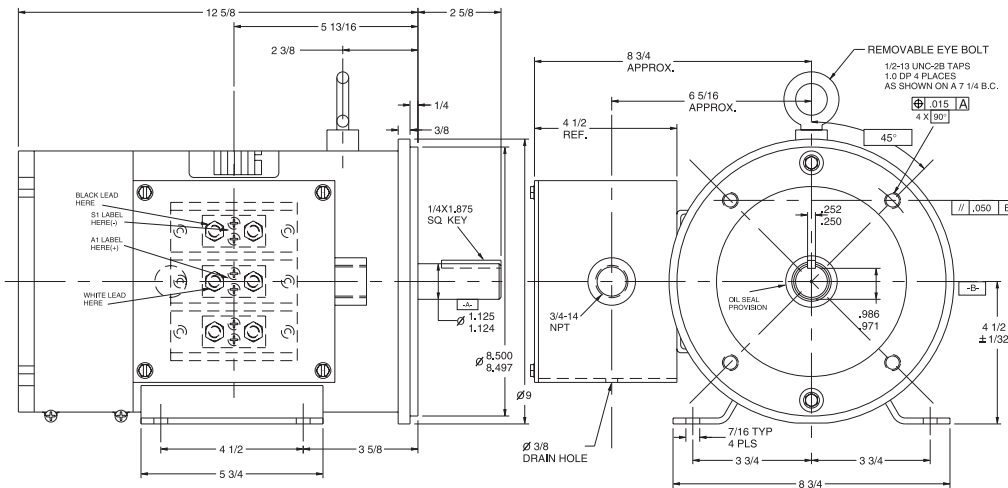
## 6.5" DIAMETER SEPARATELY EXCITED SHUNT WOUND MOTORS



### MOTORS AVAILABLE IN:

- 24 - 90 VOLT
- .33 - 2.5 HP
- 560 - 3,400 RPM
- OTHER MECHANICAL CONFIGURATIONS AVAILABLE

## 8" DIAMETER SERIES, SHUNT, COMPOUND WOUND MOTORS



### MOTORS AVAILABLE IN:

- 24 - 150 VOLT
- 3 - 12 HP
- 1,000 - 3,600 RPM
- OTHER MECHANICAL CONFIGURATIONS AVAILABLE



For further assistance with our motor products, visit us on-line at

[www.ohioelectricmotors.com](http://www.ohioelectricmotors.com)

and/or contact our sales/technical departments at

**Phone: 828/626-2901 • Fax: 828/626-2155**

or E-mail: [sales@ohioelectricmotors.com](mailto:sales@ohioelectricmotors.com)  
30 Paint Fork Road, P.O. Box 168 • Barnardville, NC 28709-0168



AFFILIATE OF HBD INDUSTRIES, INC.

**Websites: [www.ohioelectricmotors.com](http://www.ohioelectricmotors.com) • [www.hbdindustries.com](http://www.hbdindustries.com)**

