

**PEERLESS
BLOWERS**

Ultrafan-Pak

Non-Overloading Direct Drive



Your Clean Air Source!

PEERLESS BLOWERS

Page Intentionally left Blank

PEERLESS BLOWERS DIRECT DRIVE PERFORMANCE TABLES

MODEL NO.	FAN WIDTH	RPM	0.25 SP		.375 SP		.5 SP		.625 SP		.75 SP		.875 SP	
			CFM	BHP	CFM	BHP	CFM	BHP	CFM	BHP	CFM	BHP	CFM	BHP
D105-6	60%	1150	467	0.04	401	0.04	314	0.04						
	60%	1750	810	0.13	774	0.13	736	0.14	695	0.14	653	0.14	607	0.14
	60%	3500	1712	1	1694	1.01	1675	1.01	1663	1.02	1651	1.02	1635	1.03
D105-8	80%	1150	572	0.05	501	0.05	401	0.05						
	80%	1750	978	0.17	939	0.17	896	0.18	854	0.18	809	0.18	760	0.18
	80%	3500	2057	1.28	2037	1.3	2014	1.32	1996	1.33	1984	1.33	1971	1.34
D105	FULL	1150	673	0.06	591	0.06	475	0.06						
	FULL	1750	1132	0.19	1094	0.19	1053	0.2	1006	0.2	955	0.2	896	0.2
	FULL	3500	2378	1.41	2352	1.43	2338	1.45	2318	1.46	2298	1.47	2281	1.48

MODEL NO.	FAN WIDTH	RPM	0.25 SP		.375 SP		.5 SP		.75 SP		1 SP		1.25 SP		1.5 SP	
			CFM	BHP	CFM	BHP	CFM	BHP	CFM	BHP	CFM	BHP	CFM	BHP	CFM	BHP
D122-6	60%	1150	897	0.09	825	0.091	741	0.1								
	60%	1750	1476	0.3	1435	0.31	1393	0.32	1301	0.33	1200	0.34	1081	0.34	923	0.33
	60%	3500	3070	2.3	3050	2.33	3031	2.36	2992	2.39	2952	2.42	2911	2.46	2869	2.49
D122-8	80%	1150	1001	0.11	922	0.11	834	0.11								
	80%	1750	1649	0.35	1601	0.36	1554	0.37	1453	0.38	1345	0.4	1220	0.4	1056	0.39
	80%	3500	3443	2.68	3418	2.7	3394	2.72	3347	2.77	3298	2.81	3249	2.85	3202	2.89
D122	FULL	1150	1297	0.15	1208	0.15	1115	0.15	740	0.13						
	FULL	1750	2113	0.51	2059	0.52	2008	0.52	1894	0.53	1776	0.54	1643	0.53	1466	0.52
	FULL	3500	4400	3.9	4363	4.1	4329	4.03	4275	4.05	4225	4.08	4166	4.1	4116	4.12

MODEL NO.	FAN WIDTH	RPM	0.25 SP		.375 SP		.5 SP		.75 SP		1 SP		1.25 SP		1.5 SP	
			CFM	BHP	CFM	BHP	CFM	BHP	CFM	BHP	CFM	BHP	CFM	BHP	CFM	BHP
D135-6	60%	850	815	0.06	679	0.06										
	60%	1150	1231	0.15	1156	0.15	1072	0.15	859	0.16						
	60%	1750	1995	0.49	1949	0.5	1904	0.51	1808	0.53	1703	0.54	1589	0.55	1458	0.55
	60%	3500	4125	3.73	4100	3.77	4071	3.81	4030	3.84	3990	3.86	3945	3.95	3898	3.98
D135-8	80%	850	911	0.07	769	0.07										
	80%	1150	1375	0.17	1290	0.18	1201	0.18	977	0.18						
	80%	1750	2230	0.56	2176	0.58	2125	0.59	2015	0.61	1903	0.63	1781	0.64	1643	0.65
	80%	3500	4635	4.31	4594	4.36	4550	4.4	4510	4.47	4435	4.53	4392	4.59	4352	4.63
D135	FULL	850	1202	0.1	1051	0.1										
	FULL	1150	1786	0.24	1691	0.24	1593	0.25	1347	0.24						
	FULL	1750	2874	0.83	2810	0.83	2754	0.84	2635	0.85	2507	0.87	2373	0.88	2226	0.87
	FULL	3500	5875	6.45	5825	6.5	5795	6.53	5750	6.57	5725	6.6	5683	6.63	5618	6.67

Performance shown is for UltraFan-Pak with outlet duct.

1 SP		1.25 SP		1.5 SP		2 SP		2.5 SP		3 SP		3.5 SP		4 SP		4.5 SP	
CFM	BHP	CFM	BHP	CFM	BHP	CFM	BHP	CFM	BHP	CFM	BHP	CFM	BHP	CFM	BHP	CFM	BHP
553	0.14																
1620	1.03	1585	1.05	1547	1.06	1471	1.08	1391	1.11	1306	1.13	1214	1.15	1107	1.15	977	1.14
703	0.18	532	0.17														
1955	1.35	1919	1.37	1876	1.39	1792	1.41	1707	1.43	1619	1.45	1520	1.45	1406	1.46	1265	1.44
827	0.2	622	0.19														
2264	1.49	2228	1.51	2188	1.53	2105	1.57	2012	1.6	1910	1.63	1792	1.65	1654	1.63	1482	1.59

2 SP		2.5 SP		3 SP		3.5 SP		4 SP		4.5 SP		5 SP		6 SP	
CFM	BHP	CFM	BHP	CFM	BHP	CFM	BHP	CFM	BHP	CFM	BHP	CFM	BHP	CFM	BHP
2785	2.54	2696	2.59	2602	2.64	2504	2.68	2396	2.71	2287	2.72	2161	2.73	1846	2.67
3107	2.96	3007	3.02	2905	3.07	2800	3.12	2688	3.15	2570	3.18	2438	3.18	2110	3.11
4018	4.17	3904	4.21	3788	4.26	3672	4.29	3550	4.3	3427	4.32	3288	4.29	2933	4.13

2 SP		2.5 SP		3 SP		3.5 SP		4 SP		4.5 SP		5 SP		6 SP		7 SP	
CFM	BHP	CFM	BHP	CFM	BHP	CFM	BHP	CFM	BHP	CFM	BHP	CFM	BHP	CFM	BHP	CFM	BHP
1049	0.52																
3807	4.07	3714	4.14	3615	4.21	3512	4.28	3406	4.32	3296	4.38	3178	4.41	2914	4.44	2587	4.38
1219	0.6																
4249	4.72	4143	4.83	4032	4.9	3920	4.98	3804	5.04	3686	5.1	3562	5.15	3286	5.17	2941	5.09
1759	0.8																
5508	6.72	5393	6.76	5270	6.83	5140	6.89	5010	6.95	4883	7	4748	7.02	4450	6.96	4082	6.79

PEERLESS BLOWERS DIRECT DRIVE PERFORMANCE TABLES

MODEL NO.	FAN WIDTH	RPM	0.25 SP		.5 SP		.75 SP		1 SP		1.5 SP		2 SP		2.5 SP	
			CFM	BHP	CFM	BHP	CFM	BHP	CFM	BHP	CFM	BHP	CFM	BHP	CFM	BHP
D150-6	60%	850	1269	0.11	940	0.11										
	60%	1150	1854	0.26	1682	0.28	1463	0.28	1151	0.27						
	60%	1750	2960	0.88	2857	0.91	2748	0.94	2637	0.96	2378	0.99	2034	0.97		
	60%	3500	6075	6.9	6010	6.98	5982	7.02	5920	7.06	5814	7.17	5712	7.29	5605	7.4
D150-8	80%	850	1489	0.14	1125	0.14										
	80%	1150	2174	0.32	1974	0.34	1727	0.34	1390	0.32						
	80%	1750	3452	1.1	3342	1.13	3224	1.16	3093	1.19	2791	1.21	2418	1.19		
	80%	3500	7100	8.42	7050	8.6	6975	8.7	6900	8.75	6800	8.89	6686	9.04	6566	9.17
D150	FULL	850	1665	0.15	1298	0.15										
	FULL	1150	2430	0.35	2213	0.38	1964	0.39	1612	0.36						
	FULL	1750	3865	1.12	3738	1.2	3609	1.27	3461	1.32	3150	1.35	2780	1.36	2172	1.23
	FULL	3500	8000	8.1	7900	8.3	7810	8.5	7750	8.75	7600	9.4	7500	9.7	7350	10.1

MODEL NO.	FAN WIDTH	RPM	0.25 SP		.5 SP		.75 SP		1 SP		1.5 SP		2 SP		3 SP	
			CFM	BHP	CFM	BHP	CFM	BHP	CFM	BHP	CFM	BHP	CFM	BHP	CFM	BHP
D165-6	60%	850	1742	0.18	1438	0.18										
	60%	1150	2505	0.41	2322	0.44	2113	0.45	1841	0.45						
	60%	1750	3963	1.41	3850	1.45	3733	1.49	3613	1.52	3353	1.58	3040	1.59		
	60%	3500	8100	11	8000	11.2	7975	11.24	7925	11.28	7810	11.45	7698	11.61	7468	11.92
D165-8	80%	850	2044	0.22	1690	0.22										
	80%	1150	2933	0.51	2727	0.54	2480	0.56	2177	0.55						
	80%	1750	4612	1.76	4502	1.8	4373	1.85	4237	1.88	3933	1.94	3573	1.96		
	80%	3500	9400	13.75	9310	13.85	9250	13.98	9190	14.1	9122	14.22	9006	14.39	8748	14.77
D165	FULL	850	2302	0.24	1940	0.25										
	FULL	1150	3300	0.54	3073	0.6	2813	0.62	2515	0.62						
	FULL	1750	5217	1.77	5073	1.89	4932	1.98	4778	2.06	4448	2.17	4087	2.19		
	FULL	3500	10600	13	10500	13.5	10450	13.65	10375	13.9	10200	14.5	10100	15.1	9800	15.8

MODEL NO.	FAN WIDTH	RPM	.5 SP		.75 SP		1 SP		1.5 SP		2 SP		3 SP		4 SP	
			CFM	BHP	CFM	BHP	CFM	BHP	CFM	BHP	CFM	BHP	CFM	BHP	CFM	BHP
D182-6	60%	850	2012	0.28	1622	0.28										
	60%	1150	3072	0.64	2872	0.67	2640	0.7	1989	0.69						
	60%	1750	4968	2.11	4865	2.17	4748	2.22	4499	2.33	4215	2.42	34.99	2.48		
	60%	3500	10210	16.1	10190	16.3	10100	16.45	10040	16.55	9935	16.85	9727	17.33	9497	17.82
D182-8	80%	850	2415	0.35	2000	0.35										
	80%	1150	3638	0.81	3425	0.84	3181	0.87	2490	0.84						
	80%	1750	5879	2.7	5762	2.76	5622	2.82	5348	2.94	5035	3.02	4292	3.05		
	80%	3500	12100	20.6	12030	20.9	11988	21.1	11850	21.3	11750	21.5	11475	22.1	11200	22.5
D182	FULL	850	2697	0.39	2225	0.38										
	FULL	1150	4105	0.92	3837	0.96	3557	0.97	2740	0.91						
	FULL	1750	6642	3.1	6483	3.15	6342	3.21	6010	3.32	5646	3.4	4800	3.36		
	FULL	3500	13780	24.1	13675	24.5	13600	24.7	13400	24.9	13265	25.3	12955	25.65	12617	26.1

Performance shown is for UltraFan-Pak with outlet duct.

3 SP		3.5 SP		4 SP		5 SP		6 SP		7 SP		8 SP		9 SP		10 SP	
CFM	BHP	CFM	BHP	CFM	BHP	CFM	BHP	CFM	BHP	CFM	BHP	CFM	BHP	CFM	BHP	CFM	BHP
5497	7.5	5387	7.61	5272	7.68	5026	7.82	4754	7.9	4441	7.9	4072	7.8	3630	7.6		
6445	9.28	6318	9.39	6188	9.5	5898	9.64	5578	9.7	5224	9.66	4836	9.54	4384	9.28		
7200	10.2	7100	10.35	6923	10.58	6618	10.79	6303	10.86	5956	10.88	5558	10.86	5067	10.48	4340	9.82

4 SP		5 SP		6 SP		7 SP		8 SP		9 SP		10 SP		11 SP		12 SP	
CFM	BHP	CFM	BHP	CFM	BHP	CFM	BHP	CFM	BHP	CFM	BHP	CFM	BHP	CFM	BHP	CFM	BHP
7227	12.18	6975	12.42	6705	12.6	6407	12.7	6078	12.73	5707	12.69	5275	12.51				
8477	15.08	8185	15.32	7867	15.52	7517	15.6	7144	15.61	6736	15.49	6292	15.29	5768	14.86	5060	14.12
9500	16.5	9200	17	8800	17.2	8525	17.4	8167	17.5	7765	17.58	7292	17.4	6720	16.76	5800	16

5 SP		6 SP		7 SP		8 SP		9 SP		10 SP		11 SP		12 SP		14 SP	
CFM	BHP	CFM	BHP	CFM	BHP	CFM	BHP	CFM	BHP	CFM	BHP	CFM	BHP	CFM	BHP	CFM	BHP
9252	18.24	8993	18.63	8722	19.03	8432	19.35	8115	19.59	7773	19.74	7407	19.87	6989	19.81	5997	19.3
10950	23.1	10650	23.5	10400	23.8	10050	24	9750	24.4	9400	24.5	9000	24.5	8600	24.4	7450	23.7
12350	26.4	12000	26.65	11700	27.1	11375	27.2	11000	27.3	10600	27.3	10100	27.1	9600	26.8	8200	25.5

PEERLESS BLOWERS DIRECT DRIVE PERFORMANCE TABLES

MODEL NO.	FAN WIDTH	RPM	.5 SP		.75 SP		1 SP		1.5 SP		2 SP		3 SP		4 SP	
			CFM	BHP	CFM	BHP	CFM	BHP	CFM	BHP	CFM	BHP	CFM	BHP	CFM	BHP
D200-6	60%	850	2783	0.43	2413	0.45	1890	0.44								
	60%	1150	4120	0.99	3915	1.04	3683	1.08	3105	1.11						
	60%	1750	6583	3.3	6470	3.38	6354	3.46	6089	3.6	5800	3.73	5115	3.9	4190	3.87
	60%	3500	13500	25.5	13450	25.7	13390	25.9	13250	26.1	13190	26.4	12900	27	12700	27.5
D200-8	80%	850	3320	0.54	2933	0.55	2375	0.53								
	80%	1150	4880	1.26	4652	1.31	4403	1.34	3800	1.37						
	80%	1750	7790	4.23	7664	4.31	7523	4.39	7220	4.55	6911	4.68	6199	4.84	5210	4.75
	80%	3500	16000	32.6	15900	33	15850	33.2	15700	33.5	15600	33.7	15300	34.3	15000	35.3
D200	FULL	850	3785	0.61	3335	0.6	2640	0.57								
	FULL	1150	5595	1.44	5316	1.49	5005	1.52	4315	1.51						
	FULL	1750	8950	4.85	8775	4.93	8616	5.01	8275	5.16	7880	5.3	7035	5.38	5870	5.15
	FULL	3500	18600	37.3	18500	37.5	18400	37.7	18250	38.5	18025	39.1	17700	40	17300	40.5

MODEL NO.	FAN WIDTH	RPM	.5 SP		.75 SP		1 SP		1.5 SP		2 SP		3 SP		4 SP	
			CFM	BHP	CFM	BHP	CFM	BHP	CFM	BHP	CFM	BHP	CFM	BHP	CFM	BHP
D222-6	60%	850	3930	0.7	3583	0.73	3145	0.75								
	60%	1150	5680	1.64	5470	1.7	5240	1.76	4700	1.84	3980	1.86				
	60%	1750	8990	5.45	8865	5.55	8730	5.69	8463	5.9	8165	6.08	7510	6.37	6700	6.53
D222-8	80%	850	4665	0.88	4280	0.92	3800	0.93								
	80%	1150	6730	2.07	6485	2.14	6218	2.21	5630	2.29	4837	2.29				
	80%	1750	10650	6.96	10495	7.1	10337	7.21	10028	7.45	9686	7.66	8960	7.97	8075	8.13
D222	FULL	850	5610	1.08	5185	1.13	4673	1.14								
	FULL	1150	8100	2.56	7800	2.63	7485	2.71	6840	2.81	5990	2.79				
	FULL	1750	12810	8.75	12600	8.86	12425	8.98	12068	9.19	11650	9.4	10825	9.8	9890	9.96

MODEL NO.	FAN WIDTH	RPM	.5 SP		.75 SP		1 SP		1.5 SP		2 SP		3 SP		4 SP	
			CFM	BHP	CFM	BHP	CFM	BHP	CFM	BHP	CFM	BHP	CFM	BHP	CFM	BHP
D245-6	60%	850	5395	1.11	5040	1.17	4625	1.2	3350	1.17						
	60%	1150	7680	2.6	7458	2.69	7215	2.77	6681	2.92	6020	2.99				
	60%	1750	12057	8.74	11930	8.91	11785	9.09	11487	9.34	11185	9.65	10500	10.09	9735	10.43
D245-8	80%	850	6395	1.41	5995	1.46	5540	1.49	4175	1.46						
	80%	1150	9095	3.32	8835	3.41	8548	3.49	7960	3.66	7250	3.74				
	80%	1750	14272	11.23	14120	11.38	13940	11.53	13610	11.86	13250	12.17	12493	12.71	11645	13.05
D245	FULL	850	7755	1.72	7280	1.79	6800	1.84	5230	1.74						
	FULL	1150	11020	4.11	10730	4.2	10380	4.3	9680	4.48	8920	4.56				
	FULL	1750	17290	14.12	17150	14.23	16889	14.38	16530	14.7	16100	14.97	15165	15.58	14234	15.96

Performance shown is for UltraFan-Pak with outlet duct.

5 SP		6 SP		7 SP		8 SP		9 SP		10 SP		11 SP		12 SP		14 SP	
CFM	BHP	CFM	BHP	CFM	BHP	CFM	BHP	CFM	BHP	CFM	BHP	CFM	BHP	CFM	BHP	CFM	BHP
12450	28.2	12200	28.8	11900	29.4	11600	29.8	11300	30.3	10950	30.5	10600	31	10200	31.2	9400	31.2
14750	35.7	14500	36.5	14150	37	13750	37.5	13500	38	13125	38.2	12750	38.5	12350	38.6	11500	38.6
17000	41.2	16600	41.7	16250	42.1	15750	42.5	15500	42.7	15125	43	14750	43.1	14250	43	13250	42.5

5 SP	
CFM	BHP
5560	6.43
6850	8
8500	9.62

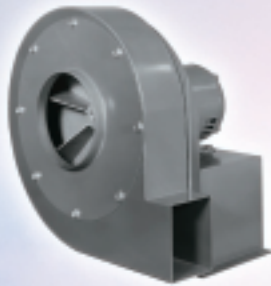
5 SP		6 SP	
CFM	BHP	CFM	BHP
8790	10.58	7520	10.44
10610	13.17	9255	12.98
13140	16.15	11590	15.68

PEERLESS BLOWERS... Your Clean Air Source!

Supplier of Quality Products for Industry:



Direct Drive Fans



Pressure Blowers



Industrial Fans



Direct Drive Exhaust Fans



In-Line Centrifugal Fans



Backward Inclined Belt Drive Blowers



Belt Drive Propeller Fans



Powerfoil Fans



Plug-Pak Fans



Forward Curve Belt Drive Fans



PEERLESS BLOWERS

One Madison Avenue, P.O. Box 187
Hot Springs, NC 28743-0187
828/622-7500 • 1-800/613-4766 • Fax: 828/622-3309

www.peerlessblowers.com

E-Mail: sales@peerlessblowers.com



Registered
to ISO 9001