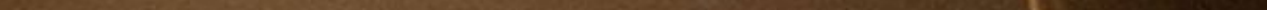




SHIV MEHTA

Letters

By
Shiv Mehta



A romantic autumn scene with a couple in a field. A man is sitting on a red and white checkered picnic blanket on the left, looking towards the right. A woman is standing on the right, leaning against a tree with vibrant yellow autumn leaves, looking towards the left. They are in a grassy field with fallen leaves, with rolling hills in the background under a soft, golden light.

SHIV MEHTA

Table of contents

- 1 - Synopsis
 - 2 - Character bios
 - 3 - 5 Creative vision / Mood board / References
 - 6 - Key Themes
 - 7 - Target audience
 - 8- Why Letters Matters
-

A romantic autumn scene with a man and a woman in a field of fallen leaves. The man is sitting on a red and white checkered blanket on the left, looking towards the woman. The woman is standing on the right, leaning against a tree with vibrant yellow and orange autumn leaves. The background shows rolling hills under a soft, golden light, suggesting a sunset or sunrise. The overall mood is serene and intimate.

SHIV MEHTA

Synopsis

Anita, a high-achieving science student, struggles with unrequited feelings for her lab partner Antoni, who sees her only as a friend. Her frustrations grow as her rivalry with Bianca, her former best friend turned academic competitor, intensifies. Their animosity stems from a humiliating incident at a science fair that shattered their friendship.

Encouraged by her loyal best friend, Chloe, Anita begins writing anonymous love letters to Antoni. Over time, their heartfelt exchanges create an emotional connection, with Antoni unaware of her identity. However, Bianca discovers the truth and manipulates the situation, falsely claiming authorship of the letters and sabotaging Anita's plans to confess her feelings.

After enduring heartbreak and betrayal, Anita finds solace in Chloe's unwavering support. At a masquerade ball, Anita finally reveals her true self to Antoni, exposing Bianca's deception. Despite this victory, Anita realizes that her happiness doesn't depend on others but on reclaiming her self-worth and individuality. The story concludes with Anita embracing her inner strength and choosing her own path.

Character Bios

Anita (17)

Role: Protagonist

Traits: Introverted, introspective, resilient, emotionally expressive.

Background: A dreamer who struggles with self-worth and often lives in her imagination. Anita hides her feelings behind books and letters, yearning for love and validation.

Arc: Anita starts as a shy and insecure individual, overly concerned with others' perceptions, particularly Antoni's and Bianca's. Through her experiences of heartbreak, betrayal, and self-reflection, she learns to value herself without seeking external validation. Her decision to walk away from Antoni at the ball marks her transformation into a confident and self-reliant person.

Antoni (17)

Role: Love Interest

Traits: Charismatic, kind-hearted, occasionally oblivious, intellectually curious.

Background:

Initially unaware of the rivalry between Anita and Bianca, Antoni's passive stance changes as he connects with the anonymous letters. He begins to question his relationships and values, ultimately respecting Anita's decision to prioritize herself, showcasing his own emotional growth.

Bianca (17)

Role: Antagonist

Traits: Ambitious, manipulative, competitive, insecure beneath her confident exterior.

Background:

Bianca's need for control and validation stems from a deep-rooted insecurity, exacerbated by past failures like the science fair incident. Her rivalry with Anita is fueled by both jealousy and her own struggle to maintain her status. By the end, Bianca faces the consequences of her actions, leading to her isolation. Though the story leaves her growth unresolved, subtle hints suggest an opportunity for self-reflection and change in the future

Chloe (17)

Role: Best Friend and Voice of Reason

Traits: Supportive, witty, bookish, optimistic.

Background:

Chloe is Anita's loyal confidante and emotional anchor. Her love for literature and storytelling shapes her witty, optimistic personality, and she often draws parallels between Anita's life and classic romantic tales. Chloe encourages Anita to take risks, offering guidance with a mix of humor and heartfelt advice.

Arc:

While Chloe does not experience a personal transformation, her role is pivotal in Anita's growth. Her unwavering belief in Anita reinforces the themes of friendship and self-worth, showcasing the importance of having someone who provides strength and encouragement during life's challenges.

Maria (Anita's Mother, 40s)

Role: Parental Support

Traits: Warm, practical, nurturing, with a playful sense of humor.

Background:

Maria is a steady, supportive presence in Anita's life. She encourages Anita to embrace her individuality and take risks, offering advice with humor and warmth. Maria's creativity shines through when she transforms Anita's old blue dress, symbolizing the power of resourcefulness and unconditional love.

Arc:

Though Maria is a minor character, her role is essential in grounding Anita emotionally. Her actions, particularly during the dress-fiasco and break-in, emphasize the importance of family support in overcoming personal challenges.



SHIV MEHTA

Creative Vision: Letters

“Letters” is a coming-of-age romantic comedy that centers on Anita, a high-achieving science student, as she embarks on a journey of unrequited love, rivalry, and, most importantly, self-discovery. While the story explores Anita’s secret affection for her lab partner, Antoni, and her rivalry with Bianca, her former best friend turned academic competitor, it is ultimately a story about Anita’s realization that self-love is the most profound and enduring form of love.

The anonymous love letters Anita writes to Antoni become more than just a way to express her feelings; they serve as a mirror, reflecting her fears, dreams, and insecurities. Through these letters, Anita begins to discover her voice and confront the parts of herself she had kept hidden. As the narrative unfolds, it becomes clear that her true journey isn’t about winning Antoni’s affection or outshining Bianca—it’s about reclaiming her self-worth and embracing her individuality.

The visual aesthetic of “Letters” will enhance this theme of self-love and transformation. Warm, vibrant colors and pastel undertones will reflect Anita’s emotional highs and lows, while brighter, celebratory hues will highlight moments of triumph and clarity. Intimate close-ups during her letter-writing sessions will capture the tender, reflective process of her self-discovery, making the audience feel as though they’re peeking into her heart.

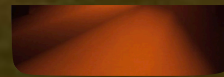
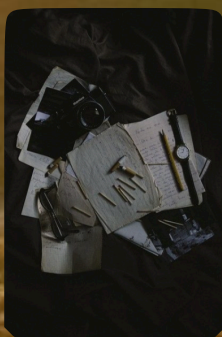
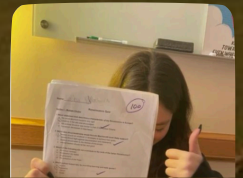
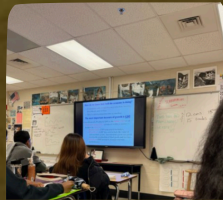
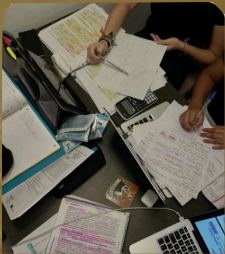
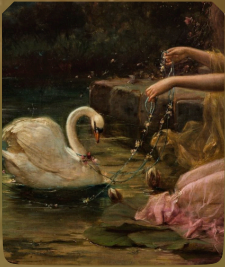
The masquerade ball, the film’s emotional climax, will symbolize Anita’s transformation. Her reimaged blue dress, crafted by her mother, will embody her newfound sense of self-worth and individuality. The dynamic lighting and lively atmosphere of the ball will contrast with the soft, golden light that bathes Anita during her moment of self-realization, emphasizing the shift from external validation to inner confidence.

The film’s tone will balance lighthearted humor with genuine emotional depth. Chloe, Anita’s witty and supportive best friend, will bring moments of levity with her playful advice, while Bianca’s manipulation will create tension that drives Anita’s growth. The soundtrack will feature a mix of uplifting, energetic songs and introspective, melodic tracks, mirroring Anita’s journey from self-doubt to self-empowerment.

“Letters” transcends the typical romantic comedy by prioritizing self-love as its central theme. It reminds the audience that the most meaningful relationships begin with the one we have with ourselves. By blending humor, romance, and heartfelt moments, *Letters* offers a fresh and empowering perspective on the coming-of-age genre, ensuring that Anita’s journey will resonate with anyone who has ever struggled to find their own voice and value.

SHIV MEHTA

Mood Board



SHIV MEHTA

References



Sound of Music

To all the boys I've loved Before



Typographical inspiration:

Eat Pray Love

Key Themes

Self-Worth and Identity

Anita's journey is a powerful exploration of self-love and acceptance. Initially driven by her desire for Antoni's attention, Anita grapples with insecurities and doubts about her value. Through Chloe's encouragement and her own introspection, Anita learns to appreciate her qualities and talents, realizing that her worth is not tied to external validation. The anonymous letters, initially meant for Antoni, become a tool for Anita to reconnect with herself, reflecting her fears, dreams, and growth. By the end, Anita embraces her individuality and understands that true self-confidence comes from within, independent of the approval of others, including Antoni. This theme underscores the idea that self-love is the foundation of personal growth and fulfillment.

Rivalry and Conflict

The tension between Anita and Bianca highlights the destructive impact of jealousy and unresolved emotions. Bianca's envy of Anita stems not just from competition for Antoni's attention but also from deep-seated insecurities and a need for validation. This rivalry, rooted in misunderstanding and unspoken grievances, serves as a cautionary tale about the cost of failing to address emotional wounds. Despite moments where communication could bridge the gap, neither character takes the step, leading to a rift that deepens throughout the story. Their dynamic illustrates the complexity of relationships, showing how rivalry can overshadow opportunities for reconciliation, and how forgiveness, while ideal, may not always be achievable.

The Power of Friendship

Chloe's unwavering support is a cornerstone of Anita's journey, showcasing the transformative power of true friendship. Chloe's advice, particularly the suggestion to write anonymous letters, allows Anita to process her emotions in a way that feels safe and authentic. Chloe's belief in Anita, even during her lowest moments, reminds the audience of the importance of having people who uplift and guide us. Their bond highlights how friendship can serve as a refuge during times of conflict and self-doubt, emphasizing that genuine connections are a source of strength and growth.

Love and Honesty

Anita's relationship with Antoni evolves as she explores vulnerability through her anonymous letters. What begins as a longing for romantic connection transforms into a journey of self-discovery. When the truth about the letters is revealed, it challenges both Anita and Antoni to confront their feelings with honesty. This pivotal moment illustrates that love rooted in authenticity can flourish, but Anita's ultimate realization is even more profound—her happiness and self-worth do not depend on Antoni or anyone else. While Bianca remains distant, Anita's growth reflects the importance of being true to oneself, showcasing how love and relationships thrive when built on honesty and self-assurance.

A young man and woman are in a park with many fallen autumn leaves on the ground. The man is sitting on a red and white checkered blanket on the left, looking towards the right. The woman is standing on the right, looking towards the left. The background shows trees with yellow and orange leaves and a grassy hill under a clear sky.

SHIV MEHTA

Why Letters Matters

Letters primarily targets teens and young adults aged 14 to 25, a demographic navigating the formative experiences of first love, academic rivalry, and personal growth. This age group often faces the dual pressures of self-discovery and societal expectations, making Anita's journey deeply relatable. The film explores universal themes such as self-worth, courage, and individuality, which resonate strongly during these transitional years.

High school students (14–18) will connect with the film's portrayal of crushes, friendships, and competition, as these dynamics mirror their own experiences in a vibrant and engaging way. College students and young professionals (18–25) will find nostalgia in the high school setting, appreciating the layered exploration of self-love and personal empowerment, themes that remain relevant as they navigate new phases of independence and identity.

Fans of romantic coming-of-age films such as *To All the Boys I've Loved Before* and *The Edge of Seventeen* will find *Letters* equally compelling for its blend of heartfelt sincerity, witty humor, and emotional depth. Additionally, the film appeals to viewers who enjoy stories with strong female leads and transformative arcs, making it particularly engaging for those who value empowering narratives.

Beyond the core demographic, *Letters* reaches parents and educators who see themselves in the supportive roles of characters like Anita's mother. They may appreciate the film's positive messaging about resilience and self-acceptance, providing an opportunity for intergenerational connection.

Culturally, *Letters* transcends borders, appealing to audiences from diverse backgrounds by addressing universally shared emotions of self-doubt, rivalry, and the desire for connection. Its themes are especially relevant in a world increasingly focused on mental health and personal growth, making the film a timely and impactful addition to the coming-of-age genre.

Ultimately, *Letters* is a story for anyone who has ever struggled with self-doubt, hesitated to take a chance, or sought validation in the wrong places. Its universal themes and relatable characters ensure its message of self-love and empowerment will inspire viewers across ages, backgrounds, and experiences.

A romantic autumn scene with a boy and a girl in a field. The boy is sitting on a red and white checkered blanket on the ground, looking towards the girl. The girl is standing on the right side of the frame, looking back at the boy. They are in a grassy field with many fallen yellow and orange leaves. In the background, there is a large tree with yellow leaves and a body of water under a clear sky.

SHIV MEHTA

Target Audience

Letters appeals primarily to teens and young adults aged 14 to 25, navigating the complexities of love, rivalry, and self-discovery during pivotal years of personal growth. Its heartfelt sincerity and youthful humor make it especially resonant with high school and college-aged audiences who relate to the trials of first love, academic pressure, and the journey toward self-acceptance.

Fans of romantic coming-of-age films like *To All the Boys I've Loved Before* and *The Edge of Seventeen* will connect with its blend of humor and emotional depth. However, the film's universal themes of self-worth, courage, and individuality extend its appeal to anyone who has ever faced self-doubt, struggled with comparison, or sought their voice in challenging situations.

In addition to its core demographic, *Letters* speaks to older audiences who enjoy nostalgic stories that capture the highs and lows of adolescence. The film resonates across cultural and social backgrounds, celebrating shared experiences of growth and the enduring importance of self-love