

RG-RAP52-OD

Reyee Wi-Fi 5 AC1300 Dual-Band Outdoor Access Point



Highlights

- AC1300 Wave 2 Outdoor Mesh Mini AP for Villas and Retail Businesses
- Wall or Pole Mounting to Fit in Any Location
- IP65 Weatherproof Rating, Delivering Consistent Protection and Signal Stability
- Detachable Antennas for Customized Coverage Where Needed
- Tailored for Retail Businesses with Reyee Mesh, Standalone Portal, and AI Roaming

Features

Highlight Features



Flexible Installation to Fit Multi-Scene



Wall Mounting



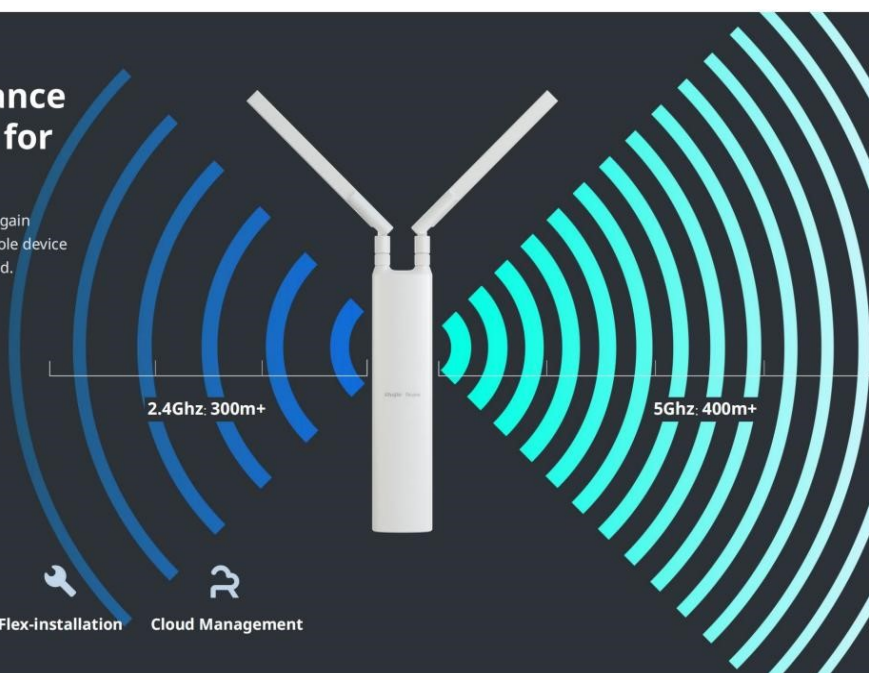
Pole Mounting

Reliable Wi-Fi Performance and Superior Coverage for Your Business

AC1300 chip solution along with Enterprise-grade high-gain amplifiers and subtle design of antennas, make the whole device perform perfectly in coverage and quality Wi-Fi delivered.

5Ghz 867 Mbps

2.4Ghz 400 Mbps



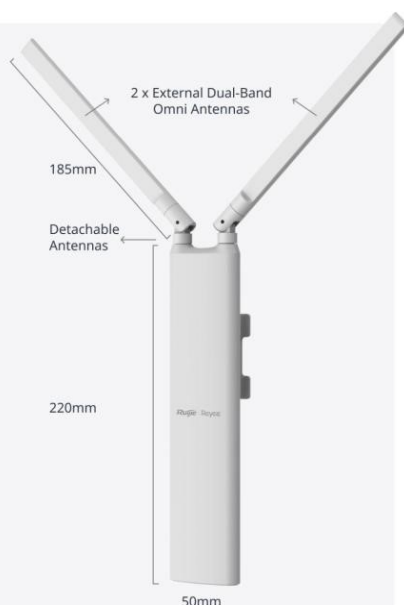
- Reyee Mesh
- IP65
- Detachable Antennas
- Flex-installation
- Cloud Management

Highlight Features

Refined Appearance

Incredibly Thin
Impressively Small

Adapt to Modern Life Change



Feeling
without
Seeing



Consistent Protection, Stable Signal

Weatherproof - Rated as IP65 during Ingress Protection Testing



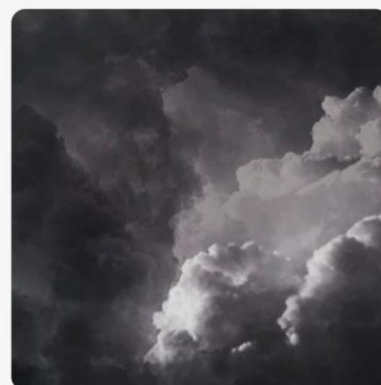
Raining-Proof

(Within A distance of 2.5 meters) strongly
sprayed by water with a flow rate of
 12.5 ± 0.625 (L/min)



Dust-Proof

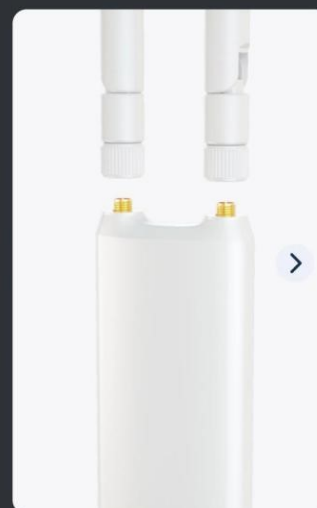
Highest Protection to prevent tiny dust into the
inside of device



Surge-Protection

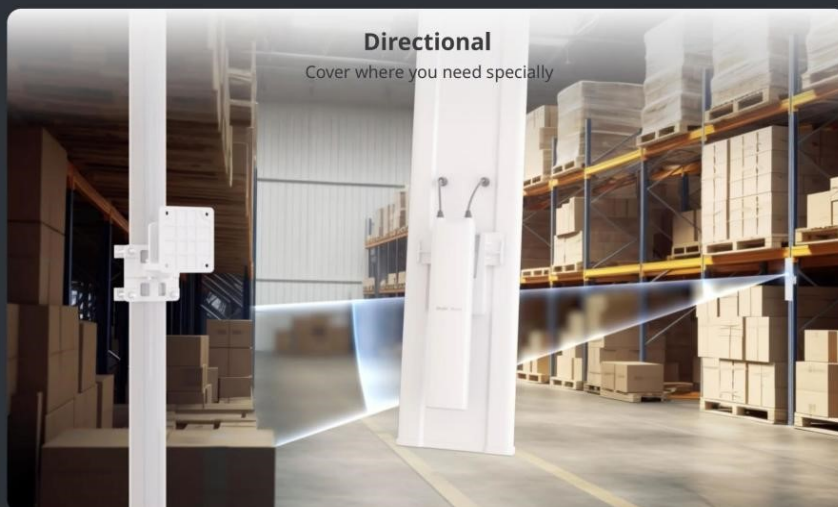
4KV Lightning Protection
15KV ESD Protection

Detachable Antennas (SMA Standard)



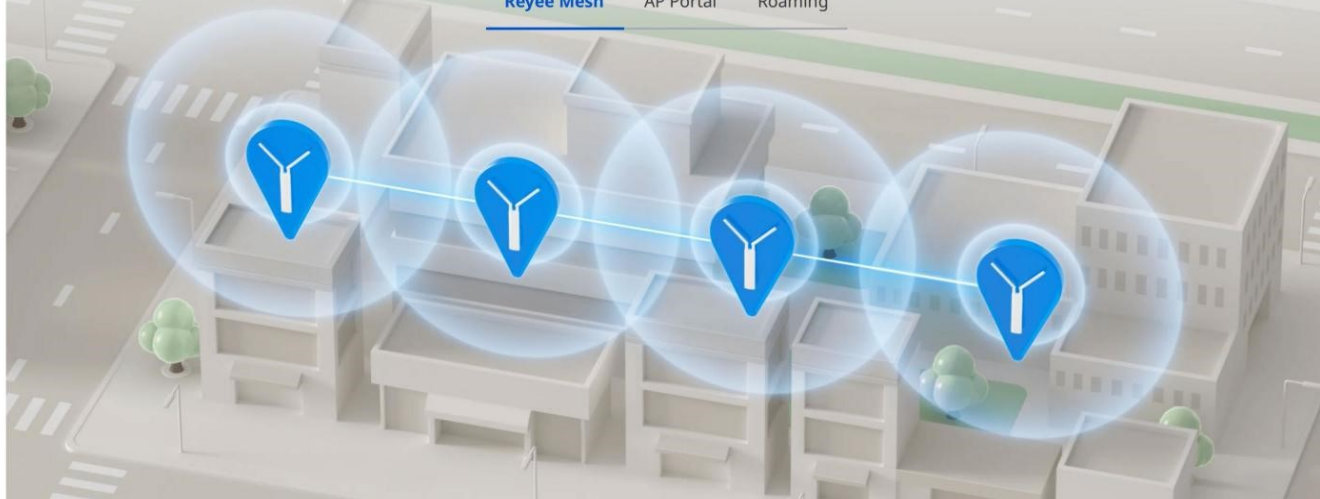
Highlight Features

Detachable Antennas (SMA Standard)



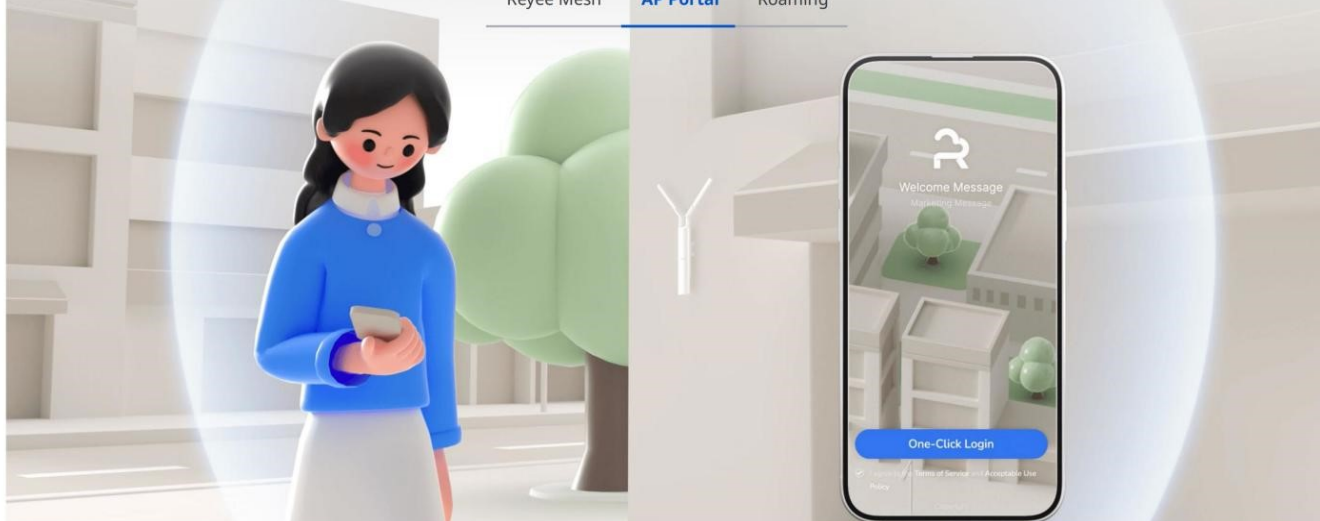
Optimized Features for Street Business

Reyee Mesh AP Portal Roaming



Optimized Features for Street Business

Reyee Mesh AP Portal Roaming



Highlight Features

Optimized Features for Street Business

Reyee Mesh

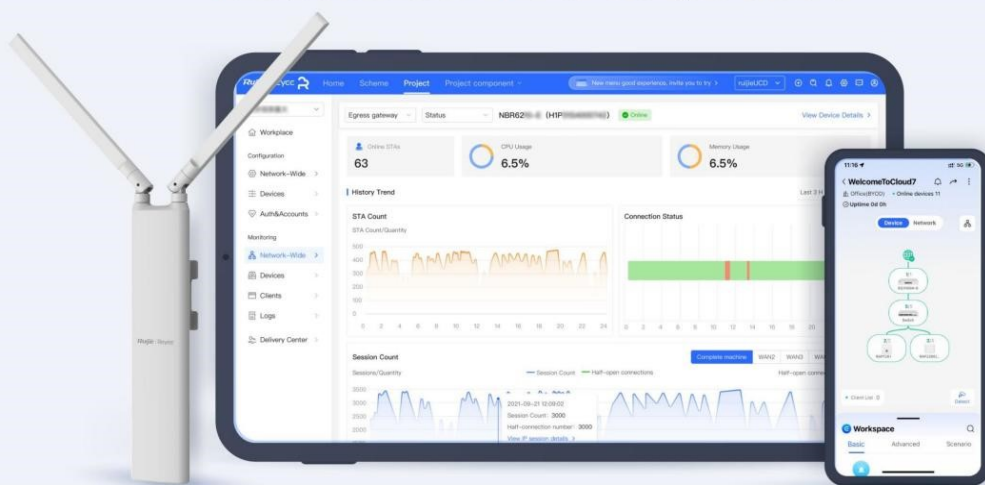
AP Portal

Roaming



Cloud, Make Your Business Easy

- Self-organizing network
- Centralized network management
- Cloud portal authentication
- Remote monitoring and maintenance



/ Product Information

Model	RG-RAP52-OD
Product Type	Outdoor AP

/ Hardware Specifications

Model	RG-RAP52-OD
Wi-Fi Radio	
6 GHz Wi-Fi	No
5 GHz Wi-Fi	Wi-Fi 4 (IEEE 802.11a/n) Wi-Fi 5 (IEEE 802.11ac)
2.4 GHz Wi-Fi	Wi-Fi 4 (IEEE 802.11b/g/n)
Operating band	IEEE 802.11b/g/n, 2.400 GHz to 2.4835 GHz IEEE 802.11a/n/ac, 5.150 GHz to 5.350 GHz, 5.470 GHz to 5.725 GHz, 5.725 GHz to 5.850 GHz Note: Available bands vary with countries and regions. To use the preceding frequency bands, ensure that your country or region supports these frequency bands.
Radio design	Dual-radio 4 spatial streams • 2.4 GHz: 2 x 2, MIMO • 5 GHz: 2 x 2, MIMO
FEM	2.4 GHz: 2 x eFEM 5 GHz: 2 x eFEM
6 GHz channel width	No
5 GHz channel width	Auto/20/40/80 MHz
2.4 GHz channel width	Auto/20/40 MHz
Maximum wireless data rate	1266 Mbps
6 GHz wireless data rate	No
5 GHz wireless data rate	866 Mbps
2.4 GHz wireless data rate	400 Mbps
Maximum transmit power	Frequency bands and maximum Effective Isotropic Radiated Power (EIRP):

/ Hardware Specifications

Model	RG-RAP52-OD
	<p>Note: Country specific restrictions apply.</p> <p>European Union & United Kingdom: 2400–2483.5 MHz, EIRP ≤ 20 dBm 5470–5725 MHz, EIRP ≤ 30 dBm</p> <p>Myanmar: 2400–2483.5 MHz, EIRP ≤ 23 dBm 5725–5825 MHz, EIRP ≤ 30 dBm</p> <p>Thailand: 2400–2483.5 MHz, EIRP ≤ 20 dBm 5470–5725 MHz, EIRP ≤ 30 dBm 5725–5825 MHz, EIRP ≤ 30 dBm</p> <p>Indonesia: 2400–2483.5 MHz, EIRP ≤ 36 dBm 5725–5825 MHz, EIRP ≤ 36 dBm</p> <p>Egypt: 2400–2483.5 MHz, EIRP ≤ 20 dBm 5150–5350 MHz, EIRP ≤ 23 dBm</p> <p>Vietnam: 2400–2483.5 MHz, EIRP ≤ 23 dBm 5150–5350 MHz, EIRP ≤ 23 dBm 5470–5725 MHz, EIRP ≤ 30 dBm 5725–5850 MHz, EIRP ≤ 30 dBm</p>
Maximum transmit power (6 GHz)	No
Maximum transmit power (5 GHz)	Combined power: 24 dBm (single-stream power: 21 dBm) Note: The transmit power varies according to regulations in different countries and regions.
Maximum transmit power (2.4 GHz)	Combined power: 25 dBm (single-stream power: 22 dBm) Note: The transmit power varies according to regulations in different countries and regions.
Coverage range	5 GHz max: 300 m (984.25 ft.) 2.4 GHz max: 100 m (328.08 ft.) 5 GHz recommended: 200 m (656.17 ft.) 2.4 GHz recommended: 50 m (164.04 ft.) Note: The data is obtained in an ideal environment without obstruction. The signal coverage radius depends on client performance and environmental interference.
Modulation	OFDM: BPSK @ 6/9 Mbps, QPSK @ 12/18 Mbps, 16-QAM @ 24 Mbps, 64-QAM @ 48/54 Mbps DSSS: DBPSK @ 1 Mbps, DQPSK @ 2 Mbps, and CCK @ 5.5/11 Mbps MIMO-OFDM: BPSK, QPSK, 16-QAM, 64-QAM, 256-QAM
Receive sensitivity	11b: –91 dBm (1 Mbps), –88 dBm (5.5 Mbps), –85 dBm (11 Mbps)

/ Hardware Specifications

Model	RG-RAP52-OD
	11a/g: -89 dBm (6 Mbps), -80 dBm (24 Mbps), -76 dBm (36 Mbps), -71 dBm (54 Mbps) 11n: -83 dBm (MCS0), -65 dBm (MCS7), -83 dBm (MCS8), -65 dBm (MCS15) 11ac: 20 MHz: -83 dBm (MCS0), -57 dBm (MCS9) 11ac: 40 MHz: -79 dBm (MCS0), -57 dBm (MCS9) 11ac: 80 MHz: -76 dBm (MCS0), -51 dBm (MCS9)
Antenna	
Antenna	Integrated 2.4 GHz and 5 GHz: 2 external omnidirectional antennas
Antenna horizontal orientation	No
Antenna vertical orientation	No
Antenna gain (6 GHz)	No
Antenna gain (5 GHz)	4.00 dBi
Antenna gain (2.4 GHz)	3.00 dBi
Dimensions and Weight	
Product dimensions (W x D x H)	50 mm x 35.7 mm x 220 mm (1.97 in. x 1.41 in. x 8.66 in.) (excluding the mounting bracket and antenna) antenna size: 185 mm (7.28 in.)
Color	White
Weight	≤ 0.4 kg (0.88 lbs.) (without packaging materials)
Shipping weight	≤ 0.5 kg (1.10 lbs.)
Port Specifications	
Number of 10/100/1000BASE-T ports	1
Reset button	1
LEDs	1 x system status LED
Power Supply and Consumption	
Power supply	PoE/PoE+
Local power supply	No

/ Hardware Specifications

Model	RG-RAP52-OD
Dimensions of the DC connector	No
PoE In standard	<ul style="list-style-type: none">• IEEE 802.3af (PoE)• IEEE 802.3at (PoE+)
Passive PoE power supply	Yes, 24 V passive PoE injector
PoE budget	No
Maximum power consumption	13.5 W
Environment and Reliability	
Operating temperature	−30°C to +65°C (−22°F to +149°F)
Storage temperature	−40°C to +75°C (−40°F to +167°F)
Operating humidity	10% RH to 95% RH (non-condensing)
Storage humidity	10% RH to 95% RH (non-condensing)
Mounting options	Wall/Pole
IP rating	IP65
Surge protection	Ethernet port: ±4 kV for common mode
MTBF	400,000 hours
Certification and Regulatory Compliance	
RoHS	Yes
Safety compliance	EN 62368-1
EMC	EN 55032 EN 55035 EN 61000-3-3 EN 61000-3-2 EN 301489-1 EN 301489-3 EN 301489-17
RF	EN 300 328 EN 301 893 EN 300 440
Certification	CE, CB

/ Hardware Specifications

Model	RG-RAP52-OD
System Specifications	
Flash memory	16 MB
RAM	128 MB DDR3

Software Specifications

Model	RG-RAP52-OD
Basic Configurations	
AP mode	Yes
Routing mode	Yes
Internet access mode	Static IP address Static IPv6 address Dynamic IP address Dynamic IPv6 address PPPoE
Interface	
IPTV transparent transmission	No
Ethernet Interface	
PPPoE clients	Yes
Ethernet Switching	
IEEE 802.1Q VLAN	Yes
WLAN	
Maximum number of associated wireless clients	64 (2.4 GHz) 110 (5 GHz) 110 (2.4 GHz and 5 GHz enabled)
Recommended number of associated wireless clients	16 (2.4 GHz) 64 (5 GHz) 80 (2.4 GHz and 5 GHz enabled)
Maximum number of SSIDs	8
Radio-based client limiting	Yes
Layer 2 isolation	Yes
OFDMA	No
WMM	Yes
DFS	Yes
MLO	No
4K-QAM	No

Software Specifications

Model	RG-RAP52-OD
Different SSIDs for the same VLAN	Yes
Enabling/Disabling MLO	No
AP load balancing	No
Beamforming	Yes
802.11k/v roaming	Yes
Fast transition (802.11r)	Yes
Layer 2 roaming	Yes
Layer 3 roaming	Yes
AI roaming	Yes
PSK authentication	Yes
Static allowlist	Yes
Adjusting the transmit power for beacon and probe frames	Yes
Encryption mode (WPA-PSK, WPA2-PSK, WPA/WPA2-PSK)	Yes
OWE (Enhanced Open) WPA3-SAE WPA2-PSK/WPA3-SAE	No
Number of blocklists and allowlists based on MAC addresses (single SSID)	256
Number of global blocklists/allowlists	256
Mesh management	Yes
AP Mesh	Yes
AP portal authentication	Yes
Maximum number of devices that can be managed	300
One-Click Network Optimization	Yes

Software Specifications

Model	RG-RAP52-OD
Static blocklist	Yes
IP Service	
ARP binding	Yes
IPv4 ping	Yes
IPv6 ping	No
Traceroute	Yes
Static/Dynamic NAT	Yes
DHCP server	Yes
Authentication	
802.1X authentication	Yes
Network Management and Monitoring	
Wireless repeater mode	Yes
Web login information	Single-device login address: 10.44.77.254 Network-wide login address: 10.44.77.253 Default password: admin
Network-wide configuration and management	Yes
Ruijie Reyee App management	Yes
eWeb management	Yes
Ruijie Cloud management	Yes
SNMP	No
Configuration synchronization among the app, eWeb, and Ruijie Cloud	Yes
Displaying device information on Ruijie Cloud	Yes

Package Contents

Model	RG-RAP52-OD
Package Contents	
Package Contents	1 x AP 2 x Antennas 2 x Band clamps 1 x Mounting bracket 2 x Cross pan head screws (ST3.5 x 25 mm) 2 x Plastic expansion anchors (ϕ 9 x 25.4 mm) 1 x User Manual 1 x Warranty Card
Accessories	
Power adapter	No

Ruijie | ReYee

 Redefine your easy network



Ruijie Networks Co., Ltd.

Official Website: <https://Reyee.Ruijie.com>