

# SPEC SHEET + MEASUREMENTS

PORT AUTHORITY.

## Port Authority® Collective Outer Shell Jacket. J900

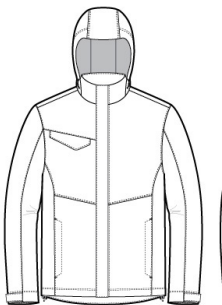
### Product photo



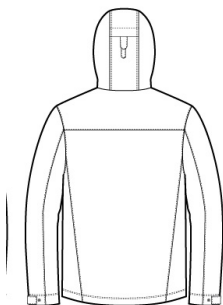
This sophisticated, breathable and waterproof shell is fully seam-sealed to fight the elements with a water-shedding durable water-repellent (DWR) finish.

- Weatherproof outer layer into which other styles can be zipped and secured by snap attachments
- 100% polyester shell with DWR finish
- 100% polyester printed lining
- 8000MM fabric waterproof rating
- 3000G/M<sup>2</sup> fabric breathability rating
- Slightly longer length
- Attached, adjustable hood with locking drawcord
- Reverse coil zippers
- Interior chest pocket
- Chest pocket with hook and loop closure
- Full-length interior storm flap
- Full-length exterior storm flap with snap closure
- Adjustable snap cuffs
- Front zippered pockets
- Port Pocket™ for decoration access
- Adjustable locking drawcord at hem

### Sketches



front



back

### CARE INSTRUCTIONS

Machine wash cold with like colors; do not use fabric softener; tumble dry low; remove promptly; only non-chlorine bleach when needed; cool iron if necessary; do not dry clean.

# SPEC SHEET + MEASUREMENTS

PORT AUTHORITY

Port Authority® Collective Outer Shell Jacket. J900

## PRODUCT MEASUREMENTS

	XS	S	M	L	XL	2XL	3XL	4XL
Body Length at Front	30	31	32	33	34	35	35 1/2	36
Chest	20 1/2	22	23 1/2	25	26 1/2	28	30	32
Sleeve Length	35 3/4	36 1/2	37 1/4	38	38 3/4	39 1/2	40 1/4	41

**Body Length at Front:** Measure from high point shoulder to lowest point of hem at front.

**Chest:** Measured across the chest one inch below armhole when laid flat.

**Sleeve Length:** Start at center of neck and measure down shoulder, down sleeve to hem.

## SIZE CHARTS

	XS	S	M	L	XL	2XL	3XL	4XL
Chest	32-34	35-37	38-40	41-43	44-46	47-49	50-53	54-57

## HOW TO MEASURE



### CHEST

Measure under the arm and around the fullest part of the chest with arms down, keeping tape horizontal.

# SPEC SHEET + MEASUREMENTS

PORT AUTHORITY.

Port Authority® Collective Outer Shell Jacket. J900

## COLORS



Deep Black  
PMS BLACK  
C



Graphite  
PMS 7540C



River Blue  
Navy  
PMS 533C